



mainroads
WESTERN AUSTRALIA

Rip & Respread Publication Report

KIM0003

*We're working for
Western Australia.*

Contents

1	PURPOSE	3
2	SCOPE	3
3	SITE MAP.....	4
4	SITE PHOTOS.....	5
5	APPENDICES	7
	Appendix 1: Species list.....	8
	Appendix 2: Additional Information.....	8

Document Control

Owner	Regional Manager – Kimberley Region
Custodian	Regional Environmental Officer – Kimberley Region
Document Number	D20#1063404
Issue Date	December 2020

Amendments

Revision Number	Revision Date	Description of Key Changes	Section / Page No.
0	December 2020	Document Release	
1			

1 PURPOSE

This Rip & Respread Publication Report provides additional information on KIM0003.

2 SCOPE

The Revegetation was undertaken in 2014 to rehabilitate 0.45ha of Victoria Highway that was associated with the Golden Gate Culvert Installation – Material extraction area at 84.5 SLK.

Table 1: Main Roads Landscaping / Revegetation Details

Main Roads Region	Kimberley Region
Road Name	Victoria Highway
Road Number	H011
Local Government	Shire of Wyndham-East Kimberley
Start SLK	84.5
End SLK	84.5
Central GPS Coordinates	<ul style="list-style-type: none"> Latitude (N): -15.97701107 Longitude (E): 128.977011
Reference Number	KIM0003
Type of Method Undertaken	Rip & Respread
Area of Method Undertaken	0.45ha
Year(s) Method Occurred	2014
Brief description	Ripping and Respreading of the topsoil to rehabilitate 0.45 ha of land that was cleared for the Golden Gate Culvert Installation – Material Extraction Area on the Victoria Highway at 84.5 ha

3 SITE MAP

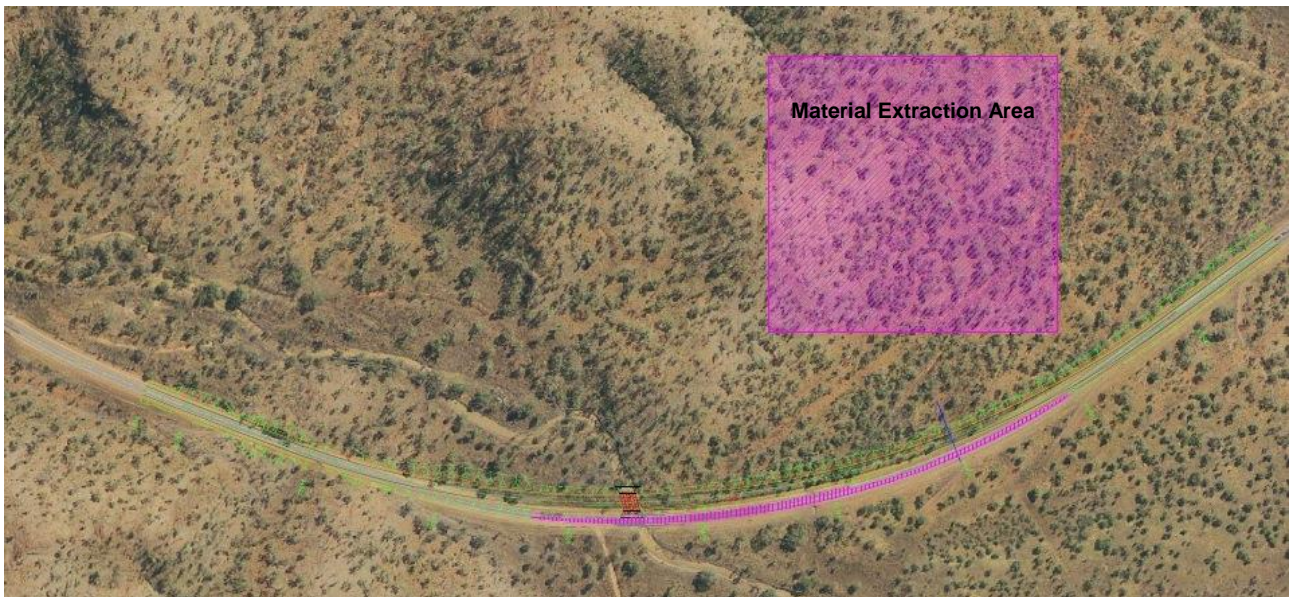


Figure 1: Revegetation Location

4 SITE PHOTOS



Figure 2: Revegetation Site 2016



Figure 3: Revegetation Site 2017



Figure 4: Revegetation Site 2018

5 APPENDICES

Appendix	Title
Appendix 1	N/A
Appendix 2	N/A

Appendix 1: Species list

N/A

Appendix 2: Additional Information

N/A