



mainroads
WESTERN AUSTRALIA

Revegetation Publication Report

GSR0024

*We're working for
Western Australia.*

Contents

1	PURPOSE	3
2	SCOPE	3
3	SITE MAP	4
4	SITE PHOTOS	5
5	APPENDICES	6
	Appendix 1: Species list	6
	Appendix 2: Additional Information	6

Document Control

Owner	Regional Manager – Great Southern Region
Custodian	Vegetation Control Coordinator – Great Southern Region
Document Number	D20#1063524
Issue Date	December 2020

Amendments

Revision Number	Revision Date	Description of Key Changes	Section / Page No.
0	Nov 2020	Document Release	
1	01/12/20	Review and Update	All

1 PURPOSE

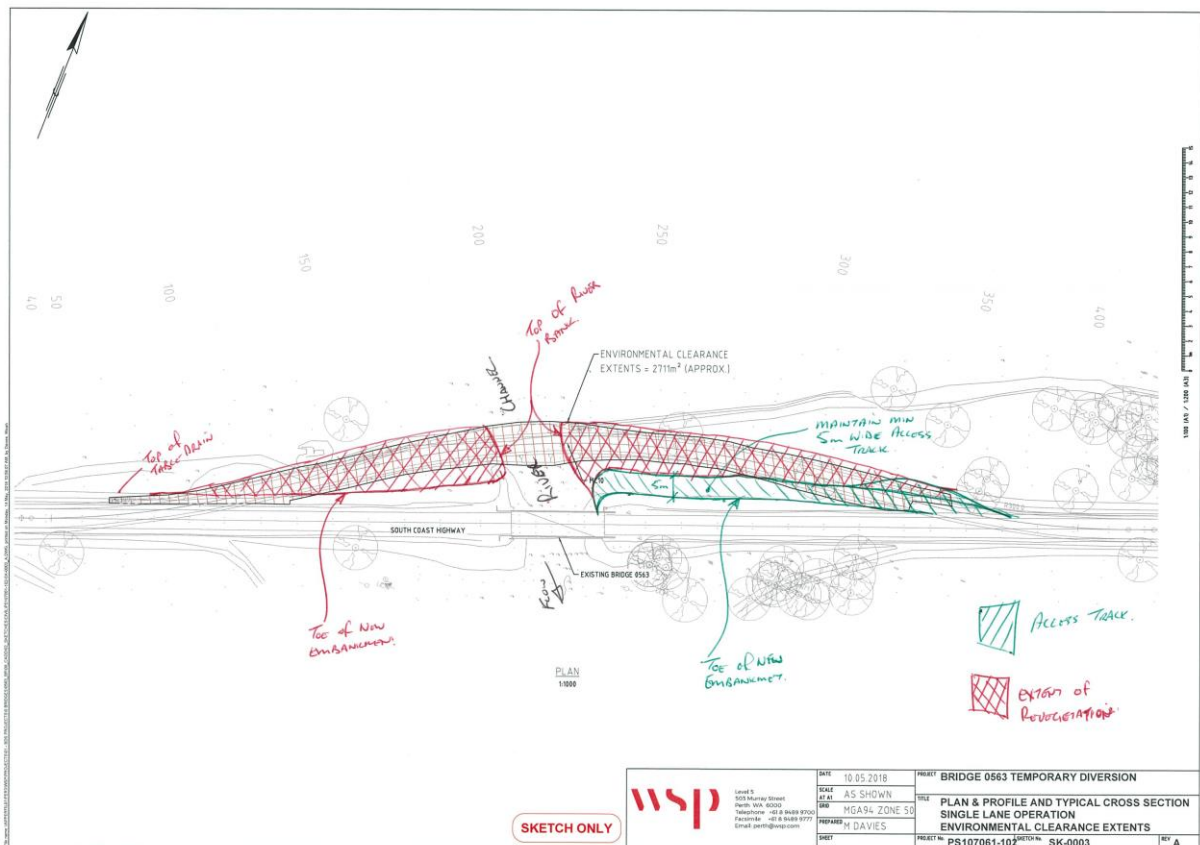
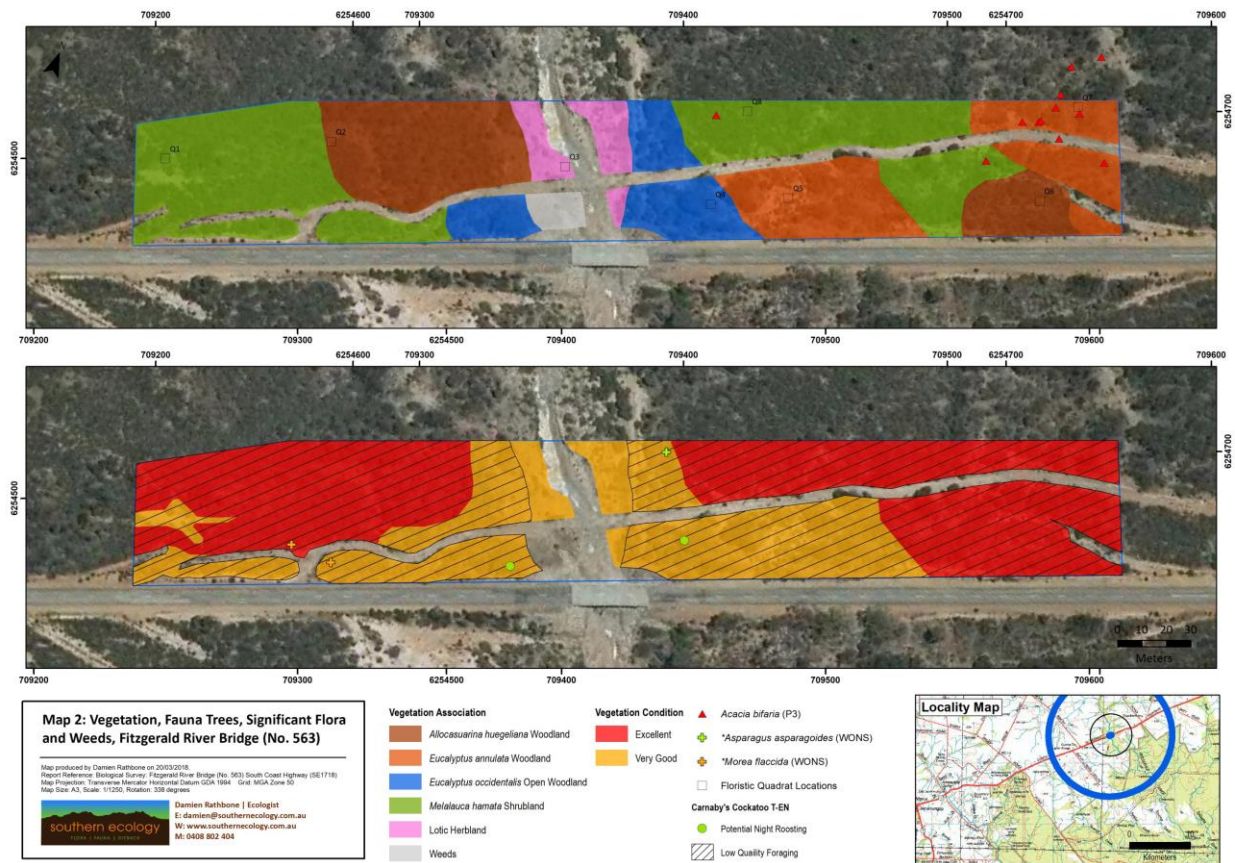
This Revegetation Publication Report provides additional information on GSR0024.

2 SCOPE

The Revegetation was undertaken in 2020 to rehabilitate 0.35ha of vegetation on South Coast Highway, with lands associated with the Fitzgerald River Bridge refurbishment.

Main Roads Region	Great Southern Region
Road Name	South Coast Highway
Road Number	H008
Start SLK	210.51
End SLK	210.51
Local Government	Shire of Jerramungup
Central GPS Coordinates	<ul style="list-style-type: none"> • Latitude (N): -33.8286 • Longitude (E): 119.2627
Reference Number	GSR0024
Type of Method Undertaken	Revegetation – Direct seeding
Area of Method Undertaken	0.35ha
Year(s) Method Occurred	2020
Brief description of Revegetation.	<p>Revegetation of disused cleared side track after Fitzgerald River Bridge refurbishment.</p> <p>0.35ha rehabilitated.</p> <p>0.7kg of seed planted 2020.</p>
Species used	Refer to Appendix 1.

3 SITE MAP



4 SITE PHOTOS

Fitzgerald River Bridge - Post Revegetation - October 2020.

- Northern side of bridge, looking east and west.



5 APPENDICES

Appendix	Title
Appendix 1	Species List
Appendix 2	Additional Information

Appendix 1: Species list

Species (Sedges / Herbs / Grasses unavailable)
<i>Acacia assimilis</i> subsp. <i>atroviridis</i>
<i>Acacia bifaria</i> ,
<i>Acacia cupularis</i>
<i>Acacia harveyi</i>
<i>Acacia microbotrya</i>
<i>Acacia multispicata</i>
<i>Acacia patagiata</i>
<i>Acacia saligna</i> var. <i>lindleyi</i>
<i>Acacia sphacelata</i> subsp. <i>recurva</i>
<i>Acacia viscifolia</i> ,
<i>Allocasuarina huegeliana</i>
<i>Astroloma epacridis</i>
<i>Comesperma volubile</i>
<i>Cooperhooia strophiolata</i>
<i>Dampiera lavandulacea</i> ,
<i>Daviesia aphylla</i>
<i>Dodonaea ceratocarpa</i>
<i>Dodonaea ptarmicaefolia</i>
<i>Eucalyptus annulata</i>
<i>Eucalyptus incrassata</i>
<i>Eucalyptus occidentalis</i>
<i>Eucalyptus pluricaulis</i> subsp. <i>porphyrea</i>
<i>Eucalyptus suggrandis</i> subsp. <i>promiscua</i>
<i>Eucalyptus suggrandis</i> subsp. <i>suggrandis</i>
<i>Eucalyptus uncinata</i>
<i>Eutaxia cuneata</i>
<i>Eutaxia empetrifolia</i>
<i>Gastrolobium celsianum</i>
<i>Goodenia concinna</i>
<i>Kennedia</i> sp. South coast (T.R. Lally 1576 & I.P. Lally)
<i>Melaleuca hamata</i>
<i>Melaleuca hamulosa</i>
<i>Melaleuca lateriflora</i>
<i>Melaleuca thyoides</i>
<i>Melaleuca viminea</i> subsp. <i>viminea</i>
<i>Senna</i> sp. Pallinup River (J.W. Green 4847)

Appendix 2: Additional Information

Post-spraying and seedlings if required 2021

Seedlings supply and planting - 500 seedlings.

Post-spraying of merging grasses and broadleaf after revegetation.