

# What is Social Value?



**Social value refers to the benefits that infrastructure can deliver to society, including economic prosperity, wellbeing and quality of life.**

## Why is it important?

Social value is important because it helps us understand and measure the broader effects of our actions on people and the environment.

By integrating social value into decision-making, we can deliver positive and lasting results for:

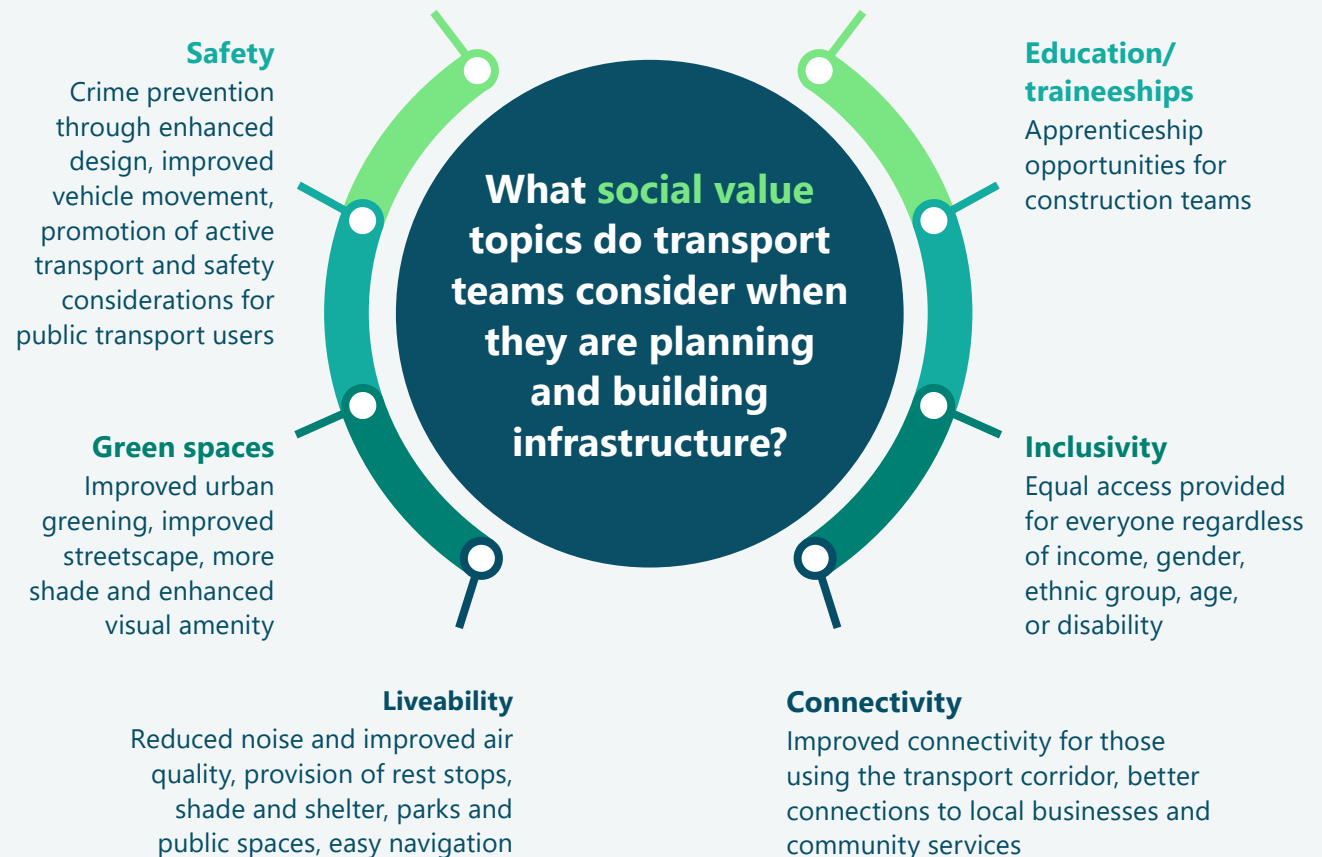
- ✓ the people living and working along and around Orrong Road
- ✓ the people using the road and path networks to move locally
- ✓ the people using the road and path networks to link to wider transport routes.

### Business and employment

Opportunities to engage local businesses and provide employment during construction

### Health and wellbeing

Opportunities to encourage active transport, improved accessibility to businesses, services, and community facilities



# What does social value mean for Orrong Connect?

During the early planning stages, the local context of the area is explored, and high-level social and economic benefits and impacts are considered.

The project team consults with stakeholders and community members to understand local perspectives, community values and priorities.

This process considers not only the type of project solution, but how the space around Orrong Connect could be used to benefit the local community and broader region.

As the project progresses, targets will be set to ensure social value outcomes are achieved.



You may wish to think about the following social value questions:

*How can this project improve quality of life?*

*How will this project impact people's daily routines once it is complete?*

*Will the solutions provide fair and equal outcomes for everyone?*

*How will the project impact local businesses?*

*Are there challenges faced by vulnerable community groups that could be overcome?*

*What can be done with the space around the transport corridor to make the area more liveable?*

