

Mandurah Estuary Bridge Duplication Project Construction Update

This update contains important information about anticipated upcoming works to occur in December and January but are subject to change.

Additional noise walls confirmed

Funding has been confirmed for additional walls to be constructed as part of the Project. The additional walls have been considered to protect privacy and provide additional noise buffering for residents on either side of the bridge, considered following feedback from the community that further protection was required. The noise walls will run to just east of Old Coast Road and just west of Leslie Street. Construction of the additional walls will begin mid-late next year with the Project team currently exploring options to minimise clearing required.

Bridge piling completed

The bridge piling program has concluded with 110 piles driven to support the abutment and piers of the future bridge and the new fishing platform. From late November running into December (including certain Sundays), the barges and piling equipment will start to demobilise from the site. The equipment, the large barge and crane will be taken apart at the eastern reclamation pad and depart through Mandurah Marina.

The Vessel Management Plan remains in place with the width of the navigational channel reduced to 30 metres while works continue in the water. Boat users are reminded to maintain the 8-knot speed limit and a no wake, no wash principle. Floating walkways remain in place for worker access across the project, however noting these do not block the navigational channel. Increased signage and police presence is in place to manage vessel speeds during construction works.

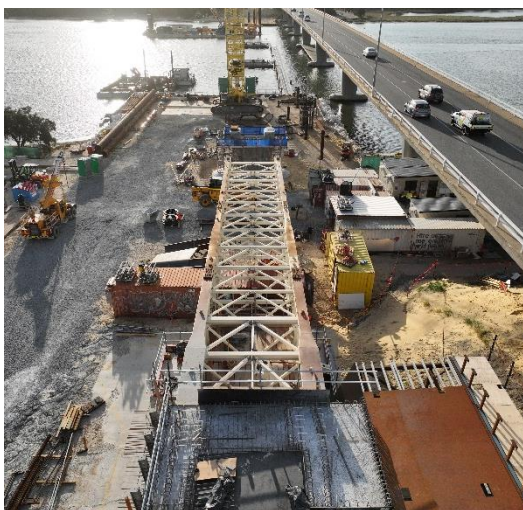


Segment launching process underway

Works are progressing on the next stage of the launching works. Progress will be more visible in 2025 as additional segments are incrementally launched, moving the new bridge across the water by around 25 metres every 2-3 weeks. The bridge launch girder will start to appear out over the estuary from the eastern foreshore. There are no safety risks to estuary users traversing under the bridge segment and its launch nose while it makes its way across the estuary. A fact sheet on the how the launch process works is available on www.mainroads.wa.gov.au.

Christmas site closure

The Project will pause construction activities from 4pm on Friday 20 December 2024 and recommence on Thursday 2 January 2025. Any queries or issues during this time can still be directed to Main Roads Customer Info Centre by phoning 138 138 or emailing enquiries@mainroads.wa.gov.au.



Lane closure westbound

Traffic will be reduced to one lane heading westbound in mid-January 2025 to allow for temporary barrier installation along Mandurah Road opposite to Seahawk Drive. This will occur during off-peak times.

Working outside of normal hours

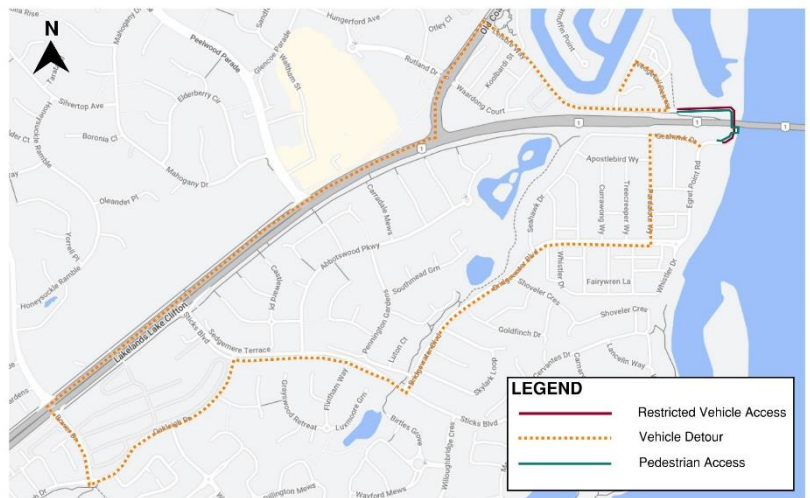
- Concrete pours and associated set-up works will continue with start times from 4am on specific days associated with the works and concrete pours of bridge segments.
- We have approval for ad-hoc works to occur on alternate Sundays. We will be working on Sunday 15 December to demobilise marine barge and equipment. There is the potential to work Sunday 5 and 19 January if programming dictates.
- The installation of noise wall panels along Egret Point Road and Waterside Drive near to the existing bridge will occur late January from 7pm – 5am. These works are occurring at night to reduce the impact on traffic during the day.

Egret Point Road closure

A detour will be in place along Egret Point Road from 10 February 2025 for just under four weeks. This is to install additional drainage under the road that will assist in mitigating future flooding of the road during winter months. The permanent road surface will also have a 'speed hump' installed to improve road safety.

Pedestrians and cyclists will still be able to access under the bridge via a temporary footpath.

At other times outside of this closure there will be ongoing traffic management on Egret Point Road to accommodate safe movement of plant and machinery to and from the western reclamation pad.



What can I expect in December and January?

- All quadrants now active work zones
- Active plant, vehicles and machinery moving in and around all sections of the project site
- Form, reinforcement and concrete (FRP) works on the bridge piers and pile caps

Waterside Drive

- Noise wall post and panel installation
- Road finishing, drainage and street lighting works
- Survey, potholing and clearing works for amenity wall extensions

Waterlily Drive

- Ongoing operation of the casting bed (hand-tools etc)
- Deliveries, concrete trucks/agitators, concrete boom-pumps, and general crane and forklift operations
- Bridge segment concrete pours and associated compaction and screeding equipment

Seahawk Drive

- Construction of precast concrete L-walls and associated back filling operations
- General earthworks
- Dewatering activities and equipment set up
- Installation of temporary steel fencing
- Survey, potholing and clearing works for amenity wall extensions

Leisure Way/Egret Point Road area

- Stop/slow traffic management for project works such as marine barge demobilisation and other associated concrete and earthworks
- Noise wall post and panel installation
- Demobilisation of marine equipment via the reclamation pad
- Construction activities at the western reclamation pad
- Survey, potholing and clearing works for amenity wall extensions
- Road finishing, drainage and street lighting works
- Survey, potholing and clearing works for amenity wall extensions

In the estuary

- Fishing platform construction
- Ongoing pier construction works
- Bridge segment launching activities
- Vessel Management Plan in place with reduced width of navigation channel

Existing fishing platform closure

Main Roads has advised City of Mandurah to close the existing fishing platform for safety reasons, unrelated to the Mandurah Estuary Bridge Duplication project works. Please visit [City of Mandurah's Facebook](#) post on 15 November 2024 for more information.

Members of the community are requested to refrain from accessing the construction area to access the fishing platform, and fishing from within the construction area in the water is prohibited.

Further information

Jointly funded by the Australian and Western Australian Governments, the \$148.8 million Mandurah Estuary Bridge Duplication project is delivering a second, two-lane bridge on the south side of the existing structure to provide additional traffic lanes.

A new four-metre-wide shared footpath will also be built to help the local community better access recreational activities. An accessible fishing platform will also be provided on the eastern foreshore.

To stay up to date with the latest project information or subscribe to automatic project updates, visit www.mainroads.wa.gov.au/mebd and join our Facebook Group by visiting [Mandurah Estuary Bridge Duplication Project](#).