



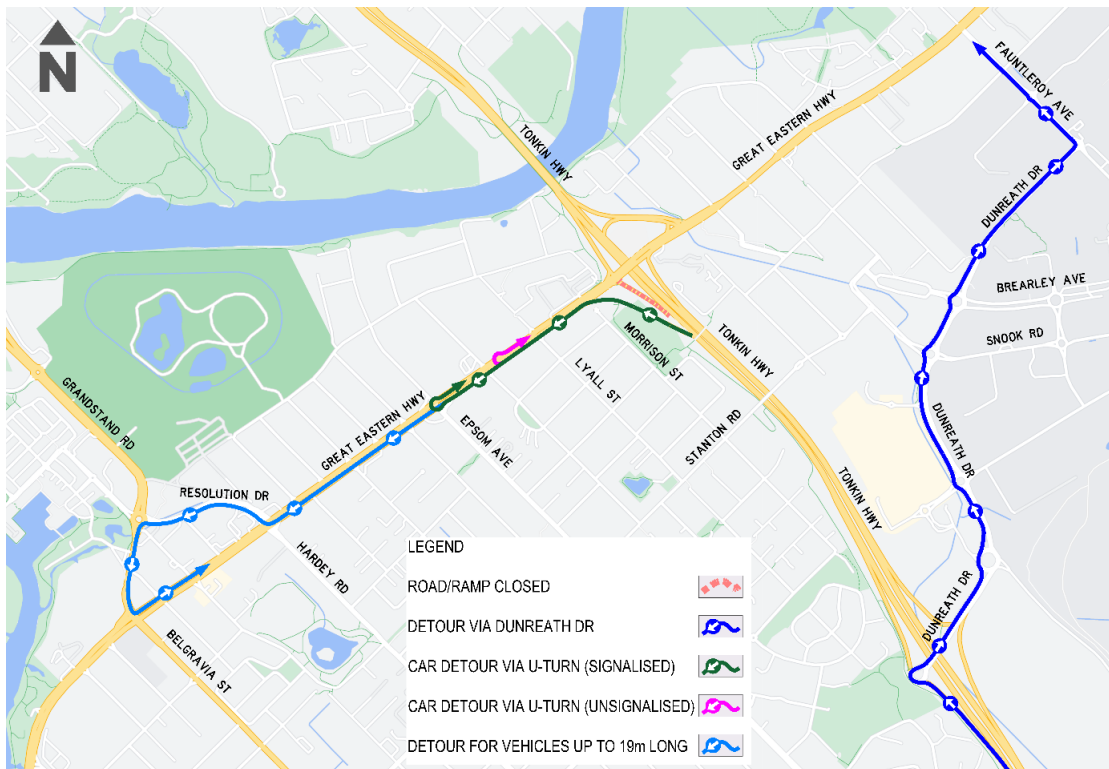
December 2022

Tonkin Gap Project and Associated Works Construction Update

This update contains important information about upcoming works near you. Works below are anticipated for December but are subject to change. Some works will need to be undertaken on Sundays. Please drive carefully and observe the road signage. There is potential for longer than usual travel times and we encourage road users to plan ahead. Up to date information will be available through the Main Roads website and our Tonkin Gap Facebook page.

Great Eastern Highway works

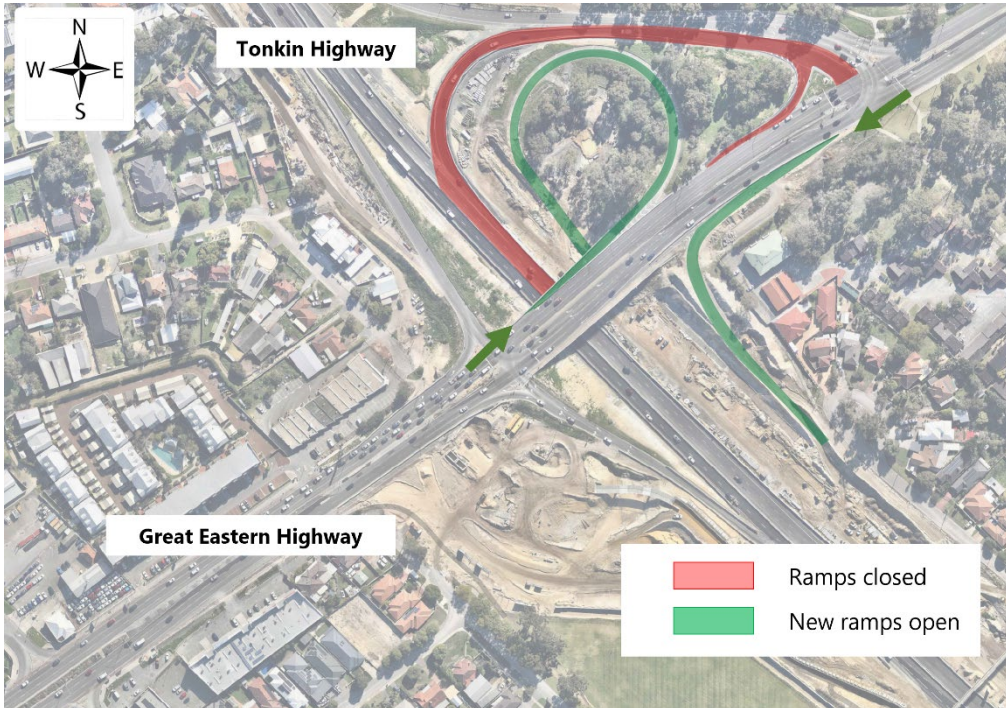
From 9 December, traffic will be switched on to the new Tonkin Highway northbound off-ramp to Great Eastern Highway. However, once we switch traffic on to the new off ramp, the right turn on to Great Eastern Highway eastbound will be temporarily unavailable. Motorists will need to turn left and U-turn near Lyall Street, at the Epsom Avenue lights to travel east, or exit at Dunreath Drive (map 1). This is so we can keep building the new loop ramp from Great Eastern Highway to Tonkin Highway northbound. Stay up to date on the 'Roadworks' page on the Main Roads website for details.



Map 1

Tonkin Highway southbound on-ramps from Great Eastern Highway reactivated

From January 3, we are planning to switch traffic onto the new on-ramps to Tonkin Highway southbound from Great Eastern Highway (map 2). If you are travelling west, you will turn left to enter Tonkin Highway, and if you are traveling eastbound you will continue to turn left to enter Tonkin Highway. When the on-ramps are re-opened, we will close the temporary on ramp that was built for traffic entering onto Tonkin Highway southbound from Great Eastern Highway.



Map 2

Tonkin Highway between Dunreath Drive and Great Eastern Highway

In December, the team will continue to build the new Tonkin Highway southbound lanes between Dunreath Drive and Great Eastern Highway. There will be ongoing earthworks in the area which may cause noise, vibrations and dust. Most of the works will happen during the day, however, there will be intermittent night works.

Victoria Street footbridge

Work on the Victoria Street footbridge to rectify the structural connection continues. Before we can open the footbridge, we need to complete concrete, deck and abutment works, install the handrails and build the temporary path connection to the footbridge. Unfortunately, the remaining works cannot be done after the bridge is open as it will expose pedestrians and cyclists on the PPS to several hazards. We aim to have the footbridge open before the end of 2022. Once the footbridge is open, the team will replace the screens on the bridge.

Redcliffe Bridge

Works continue with the installation of noise walls and permanent traffic barriers on Redcliffe Bridge. Access to site from Tonkin Highway is now closed so we can start building the permanent ramps to and from Great Eastern Highway. This means you will see more trucks on the local road network in Ascot, including Matheson Road. However, we will be mindful of the horses and continue to drive to the speed limit. Dust and vibrations may be noticeable during this work.

Dunstone Road

The team has successfully installed the noise walls along the Dunstone Road bridges. There will be intermittent stop/slow traffic management along Dunstone Road so we can install crash cushions along the new traffic barriers.

Tonkin Highway between Redcliffe Bridge and Guildford Road

During early December, the team will be preparing to switch traffic along Tonkin Highway northbound between Dunstone Road and Collier Road, which includes opening the new Guildford Road northbound on and off ramps. These switches will need to happen at night as we will be modifying traffic barriers and the lane configuration.

Noise wall progress

We have completed the piling works for the noise walls along The Court, and the panels will start to be installed this month. The team has also started painting the noise walls near Selby Park and along Tonkin Highway near Dunstone Road.

Railway Parade and Guildford Road bridges

Intermittent lane closures at night will be required on Railway Parade and Guildford Road, while we complete barrier works on the existing bridges. During one day in December, a full Railway Parade closure will be required - stay up to date on the 'Roadworks' page on the Main Roads website and the Tonkin Gap Facebook page for details.

From 9pm Friday, 9 December to 5am Monday, 12 December the Moojebing rail crossing will be closed so we can remove the existing bridge screens on the old Railway Parade bridge and install drainage along the rail. To safely complete these works over the train line, the Midland Line will also be closed. Train replacement bus services will operate while train services are cancelled. For more details, including the closure times and operation of train replacement services, visit transperth.wa.gov.au.



Guildford Road bridges

Broun Avenue

Works at Broun Avenue continue as we build the bridge approach barriers and complete pavement works. This will include early morning concrete pours.

From 12 to 16 December the team will be working at night to install handrails on top of the retaining walls along Tonkin Highway southbound between Morley Drive and Broun Avenue. Lanes will be closed and there will be noise during these works, including the use of a hammer drill.

Stay up to date via the Main Roads website and Tonkin Gap Facebook page.

Cherry Court

In late November, we reopened access at the Doyle Street and Broun Avenue intersection on a temporary alignment. The team will complete the remaining finishing works including kerbing and verge works, as well as the construction of the new shared path.

Noranda works

Sheet piling works will continue through December for the future Noranda Station car park. Sheet piling involves drilling sheets of steel into the ground to provide support to the nearby works. During this work there will be noise and vibrations.

Morley works

In November we successfully deconstructed the old Bayswater Skate Park and works will continue in the area during December in preparation for construction of the new car park.

Dive structures update

Northern dive structure

Works continue on the northern dive structure, including the completion of concrete walls and precast planks. The planks will form the surface for the new Tonkin Highway southbound lanes to travel over the dive structure. There will be ongoing early concrete pours and the team will begin pavement works on the southern end of the dive.

Southern dive structure

This month we will be switching traffic onto the temporary alignment of Tonkin Highway northbound which will travel across the southern dive structure. This will allow the team to start works on the eastern side of the structure which includes, backfilling, applying anti-graffiti coating and pavement works.

Taking a construction break during the holiday period

We understand December is a special time for many which is why we will be pausing construction from 1pm 23 December to 7am 9 January for a holiday break. During the break the Main Roads Customer Information Centre will still be available for urgent enquiries – 138 138.



Happy holidays from the Tonkin Gap Project

Out of hours works this month

In December our crews will be working through the night, 7pm until 7am and occasional Sundays, in our project area and along Tonkin Highway, between Dunreath Drive and Hepburn Avenue. Specific details, including dates and locations, will be posted on the Facebook group and the Main Roads website.

The works will occur at:

- Tonkin Highway between Redcliffe Bridge and Dunreath Drive
 - Barrier works, lane closures, pavement works and traffic management
- Tonkin Highway between Guildford Road and Redcliffe Bridge
 - Traffic management, traffic barrier installation, pavement removal
- Great Eastern Highway, between Epsom Avenue and Coolgardie Avenue
 - Intermittent night works
 - Pavement works, traffic management
- Broun Avenue, between Embleton Avenue and Beechboro Road North
 - Traffic management, barrier relocation and early concrete pours for bridge approach barriers
 - Intermittent Sunday works
- Tonkin Highway between Hepburn Avenue and Collier Road
 - Tonkin Highway widening, bridge modifications, traffic barrier works and road works
- Railway Parade and Guildford Road, near Tonkin Highway
 - Intermittent night works and traffic barrier removal
 - Finishing works on Railway Parade bridges
- Redcliffe Bridge
 - Early morning concrete pours for traffic barrier installation

What can I expect?

- Works and vehicle movements may be noticeable across all areas. Noise and vibration management measures are in place, including use of the quietest equipment reasonably available.
- Works will be in accordance with a noise management plan approved by your local government authority. If you have concerns about our works, please call 138 138 (24 hours).

For more information on Tonkin Gap

W: <https://www.mainroads.wa.gov.au/tonkin-gap/>

E: enquiries@mainroads.wa.gov.au

T: 138 138 (24 hours)

FB: <https://www.facebook.com/groups/tonkingap/>

For more information on the Morley-Ellenbrook Line

W: www.metronet.wa.gov.au

E: info@metronet.wa.gov.au

T: 08 9326 3666

FB: <https://www.facebook.com/groups/morley.ellenbrook>