



Australian Government



mainroads
WESTERN AUSTRALIA

BUILDING OUR FUTURE



Smart Freeways Policy Framework Overview

2/03/2021

These guidelines are produced for the purpose of works to be carried out by Main Roads Western Australia or under contract with Main Roads. Although the guidelines are believed to be correct at the time of publication, Main Roads Western Australia does not accept the responsibility for any consequences arising from the use of the information in the guidelines by others. The users of these guidelines should rely on their own skill and judgment when applying the content of the guidelines.

Smart Freeways Policy Framework Overview



© Main Roads Western Australia March 2021

For comments or further information, please contact Acting Network Operations Planning Manager Bitu Charehjo, phone: (08) 9323 4439, email: bitu.charehjo@mainroads.wa.gov.au.

Keywords: Smart Freeways, managed motorways, intelligent transport systems, policy, governance, planning, objectives, performance outcomes.

Smart Freeways Policy Framework Overview

Document control

Owner	Mehdi Langroudi, Director Congestion and Movement Strategy 
Custodian	Bitu Charehjo, Acting Network Operations Planning Manager 
Document number	D20#550472 D21#259000 (PDF Version)
Issue date	March 2021
Prepared by	Maurice Burley, Traffic and Road Safety Consultant
Reviewed by	Adam Reynolds, Transport Planning Leader – Aurecon Kamal Weeratunga, Acting Manager Network Performance
Approved by	Mehdi Langroudi, Director Congestion and Movement Strategy

Revision

Issue Date	Description	Section / Page No.
June 2012	Main Roads' Managed Freeways Policy Discussion Paper Original document	All
January 2021	Smart Freeways Policy Framework Overview Major revision	All
October 2022	Text in Table 3.1 (Section 3.2) updated	Section 3.2

Foreword

Smart Freeways policy and guidelines

The Main Roads Western Australia's (Main Roads) Smart Freeways policy and various guidelines influence overall planning, project development, delivery and ongoing operation of Smart Freeways in Western Australia.

The Smart Freeways documents were originally developed as part of the Managed Freeways Policy Framework in 2012. At that time Main Roads used the term 'Managed Freeways', which was changed to 'Smart Freeways' at the time of the first Smart Freeways project on Kwinana Freeway northbound. The 2020 updated documents supersede the previous Managed Freeways documents.

Historically, intelligent transport systems (ITS) on freeways were typically considered case by case. Our current approach is outlined in the Smart Freeways Policy, which states that all freeways are considered for ITS provision at either foundation or higher-order standard according to these guidelines.

Main Roads' Smart Freeways policy and guidelines comprise the documents listed in the table below. This document is shown highlighted.

Document	Description
Smart Freeways Policy	One page high-level policy statement setting out Smart Freeways objectives and principles.
Smart Freeways Policy Framework Overview	Smart Freeways context, principles, corporate governance, processes and intended outcomes to achieve policy objectives.
Smart Freeways Provision Guidelines	Guidelines and warrants for application of Smart Freeways traffic management treatments and ITS devices.
Smart Freeways Operational Efficiency Audit Guidelines	Guidelines for formal examination of traffic analysis and design of all freeway projects.
Guidelines for Variable Message Signs	Guidelines for the design and use of variable message signs for traveller information for safe and efficient travel for road users.
Supplement to Victoria's Managed Motorway Design Guide, Volume 2: Design Practice, Parts 2 and 3	Main Roads' Supplement relating to: <ul style="list-style-type: none"> • Network optimisation tools (benefits and operation of coordinated ramp signals). • Planning and design for mainline, entry ramps (including ramp signals), exit ramps and interchanges.

Document	Description
Supplement to Victoria's Managed Freeways Handbook for Lane Use Management and Variable Speed Limits	Main Roads' Supplement relating to: <ul style="list-style-type: none"> • Lane use management system (LUMS). • Variable speed limits (VSL).

Smart Freeways concept

Smart Freeways make the best use of the existing freeway network, particularly during times of high demand and traffic incidents. We use ITS and operational strategies that enable dynamic network management and operation in real-time. Smart Freeways traffic management initiatives, complemented by appropriate mainline and ramp geometric improvements, work together as an integrated system to achieve and maintain optimal freeway traffic conditions, with minimal delays and congestion.

Over recent years, Victoria's approach to managed motorways in Melbourne has achieved unparalleled, sustainable benefits to freeway operations for safety, productivity, efficiency and reliability. We have applied the same holistic principles and learnings, while also working towards national consistency.

Smart Freeways design and operations should consider both the perspective of the road user and the road operator:

- **Road user** – Smart Freeways provide a better driving experience and meet the road user's expectations for safe and reliable travel on a preferred traffic route.
- **Road operator** – Smart Freeways meet the road operator's need for the most efficient and productive use of existing and proposed freeways through real-time monitoring and effective control of traffic.

Background and concept

Freeways are essential infrastructure for Western Australia's economy, providing for the safe and efficient movement of people and goods. Freeways and high standard arterial roads comprise 27 per cent (or 201 km) of the metropolitan state road network (746 km), yet include 54 per cent of the total vehicle kilometres travelled (VKT) in the AM peak and 57 per cent of total VKT in the PM peak.

The Department of Planning, Lands and Heritage forecast a population of 3.5 million people in the Perth and Peel areas in 2050 (Perth and Peel@3.5million report (2018)). It is expected that significant levels of traffic growth will occur, and this could cause increasing congestion which would adversely impact social and economic activity in Western Australia. The Infrastructure Australia, Urban Transport Crowding and Congestion (Australian Infrastructure Audit 2019-Supplementary report), predicts that the cost of congestion in Perth will increase from \$1.53 billion in 2016 (2019 Audit) to \$3.62 billion in 2031 (2019 Audit). Main Roads is exploring opportunities to maximise utilisation of new and existing infrastructure assets using Smart Freeway technology to improve operational efficiency and accommodate future traffic demand whilst minimising the need for costly network expansion.

Smart Freeways is a concept proven worldwide to deliver best outcomes for both the road user and the road operator. This is through the achievement of sustained and safe utilisation of the full productive capacity of the asset.

Smart Freeways concept – Making the best use of the existing freeway network, particularly during times of high demand and traffic incidents. This is realised through the application of intelligent transport systems and operation strategies that enable dynamic network management and operation in real-time. Smart Freeways treatments, complemented with appropriate mainline and ramp geometric improvements, work together as an integrated system to achieve and maintain optimal freeway traffic conditions with minimal delays and congestion.

Main Roads will implement Smart Freeways technologies on their freeway network based on coordinated ramp signals (CRS) as the primary control mechanisms to prevent or delay flow breakdown. CRS are considered to be the most effective management technology to achieve high levels of travel efficiency, productivity and reliability. They have proven to be effective in sustaining capacity during peak periods and reduce inefficiencies caused by flow breakdown.

Additional technologies that have a key role in achieving a safe and high performance freeway environment with informed road users are all lane running, variable speed limits and lane use management, supplemented by real-time traveller information and incident management systems.

Smart Freeways support traffic operators and road asset managers in carrying out their responsibilities for effective road network operations. The improvements in transport efficiency result in social, economic and environmental benefits to road users and the wider public.

The Smart Freeways policy is fully aligned with Main Roads' strategic direction, Keeping WA Moving, with areas of focus on Customers, Movement, Sustainability and Safety. It is further driven by State and Federal Government strategies and initiatives including the National Road Network Optimisation Program, listed as a High Priority initiative in the Infrastructure Australia 2019 Infrastructure Priority List.

Smart Freeways policy

Main Roads is progressively introducing Smart Freeway solutions into our existing and future road assets, aiming to provide the safest, and most reliable, productive and resilient state roads for our customers.

Policy objectives

Our objectives are to create a world-class Smart Freeways system for:

- reliable travel times
- efficient movement of people and freight
- improved network productivity contributing to the state's economic prosperity
- improved safety of all road users including road workers
- reducing congestion, emissions and cost of travel

- additional capacity from the existing network through targeted improvements and using appropriate technology
- improved network resilience and flexibility to meet abrupt change in demand or available capacity due to incidents
- enhanced real-time information to improve the customer travel experience, and
- connected and automated vehicles aligned with national guidance.

Policy principles

This policy is underpinned by the following principles:

- Solutions will be guided by this policy and Smart Freeways Guidelines, which are aligned with best practice guidelines as appropriate.
- Smart Freeways are to be part of an integrated transport system and aligned with long-term network planning.
- Smart Freeway solutions will be designed to address specific performance issues identified by network analysis and based on robust data.
- All ITS solutions will take into consideration national ITS architecture, systems engineering, whole-of-life costs and proven technologies.
- Planning and design decisions will consider the potential impacts of connected and automated vehicles as they emerge.
- All Smart Freeway designs will be subject to operational efficiency audits.
- All freeways will, as a minimum, have real-time network monitoring capability and intelligence, and provision for higher-order Smart Freeway treatments when needed.
- Customer perspective and education are essential to the solution.
- We will confirm objectives and benefits through on-going performance monitoring, evaluation and operational fine tuning.
- We will encourage innovation and development of skills and expertise through research and development trials, as well as strategic partnerships with other road agencies, industry, research institutions and universities.

Governance

There is shared responsibility across Main Roads for the Smart Freeways' documents as well as for Smart Freeways' planning, design and implementation as outlined in Section 5.

Network application

All existing and future freeway-standard roads in Western Australia will be progressively upgraded to Smart Freeways as appropriate, following detailed network analysis and on a prioritised basis as funding allows. In the short-term, the focus will be on current and programmed freeway projects and congested sections of the network.

Abbreviations

ALR	All lane running
AADT	Annual average daily traffic
AAWDT	Annual average weekday traffic
ANPR	Automatic number plate recognition
AID	Automatic incident detection
CCTV	Closed circuit television
CIC	Customer Information Centre
CRS	Coordinated ramp signals
DMS	Dynamic message sign
ESL	Emergency stopping lane
ICT	Information and communications technology
IRS	Incident response service
ITS	Intelligent transport systems
LUMS	Lane use management system
NOPF	Network operations planning framework
PMTZ	Partially managed transition zone
pc/h/ln	Passenger cars per hour per lane
PTA	Public Transport Authority
PTZ	Pan, tilt and zoom
RC1	ramp control sign 1
RC2	ramp control sign 2
RC3	ramp control sign 3
RNOC	Road Network Operations Centre
RTMT	Real-time monitoring team
RTTO	Real-time traffic operations
SCATS	Sydney Coordinated Adaptive Traffic System
SF	Smart Freeways
STREAMS	ITS control system currently in use by Main Roads (refer Section 9.4)
TCSN	Traffic control system network
TIRTL	The Infra-Red Traffic Logger
UPS	Uninterrupted power supply
VDS	Vehicle detection station
veh/h	Vehicles per hour
veh/h/ln	Vehicles per hour per lane

VMS	Variable message sign
VSL	Variable speed limits
WA	Western Australia
WAPOL	Western Australia Police
WIM	Weigh-in-motion

Contents

1	Introduction.....	1
1.1	Smart Freeways policy framework overview	1
1.2	Purpose of this document.....	2
1.3	Consultation.....	2
2	Background.....	3
2.1	Need for Smart Freeways	3
2.2	Smart Freeways concept.....	4
2.3	Policy context.....	5
3	Intended outcomes and objectives.....	7
3.1	Smart Freeways policy	7
3.2	Applicable types of planning and implementation projects.....	7
3.3	Smart Freeway outcomes	8
3.4	Key enablers.....	9
4	Policy foundations	11
4.1	Integrated transport planning	11
4.2	Smart Freeways technologies	12
4.3	Real-time data collection.....	13
4.4	Ongoing operations and asset management.....	14
4.5	Freeway performance management.....	15
4.6	Stakeholder engagement.....	16
4.7	Driver behaviour and compliance	17
4.8	Road user and safety perspective.....	17
4.9	Network operations planning process	18
4.10	Systems engineering approach.....	20
4.10.1	Key principles	21
4.11	Procurement of ITS technology.....	22
4.12	Organisation development and people readiness.....	23
5	Governance and implementation.....	25
5.1	Governance	25
5.1.1	Smart Freeways policy framework.....	25
5.1.2	Steering committees.....	26

5.2	Network application and implementation	26
5.3	Performance-based design.....	32
5.4	Consideration of freight movement and efficiency	33
5.5	Consideration of freeway-to-freeway ramps	34
5.6	Departures from design standards	34
5.6.1	Smart Freeways types of departures from standards	36
5.6.2	Approval process	37
5.6.3	Documentation required.....	38
5.6.4	Matters requiring consideration.....	38
5.7	Performance-based maintenance management	44
6	Performance-based operations	45
6.1	Context	45
6.2	Mainline and system management concepts	45
6.3	Ramp signals operational principles.....	46
6.3.1	Usual operations	46
6.3.2	Excessive entry ramp demand	46
6.3.3	Heavy congestion management	47
6.3.4	Extra-ordinary circumstances	48
7	References.....	50
Appendix A	Definitions	51
Appendix B	Smart Freeways Policy	53

This page has been left intentionally blank

1 Introduction

1.1 Smart Freeways policy framework overview

The Main Roads Western Australia (Main Roads) Smart Freeways policy and various guidelines, collectively referred to as Smart Freeways Policy Framework, influence overall planning, project development, delivery and ongoing operation of Smart Freeways in Western Australia.

The Smart Freeways policy and associated guidelines were originally developed as part of the Managed Freeways Policy Framework in 2012. At that time Main Roads used the term 'Managed Freeways', which was changed to 'Smart Freeways' at the time of the first Smart Freeways project on Kwinana Freeway northbound. The 2020 updated documents supersede the previous Managed Freeways documents.

Historically, ITS on freeways were typically considered case by case. Our current approach is outlined in the Smart Freeways Policy, which states that all freeways are considered for ITS provision at either foundation or higher-order standard according to these guidelines.

Main Roads' Smart Freeways policy and guidelines comprise the documents listed in Table 1.1 below. This document is shown highlighted.

Table 1.1: Smart Freeways policy framework documentation

Document	Description
Smart Freeways Policy	One page high-level policy statement setting out Smart Freeways objectives and principles.
Smart Freeways Policy Framework Overview	Smart Freeways context, principles, corporate governance, processes and intended outcomes to achieve policy objectives.
Smart Freeways Provision Guidelines	Guidelines and warrants for application of Smart Freeways traffic management treatments and ITS devices.
Smart Freeways Operational Efficiency Audit Guidelines	Guidelines for formal examination of traffic analysis and design of all freeway projects.
Smart Freeways Variable Message Signs Guidelines	Guidelines for the design and use of variable message signs for traveller information for safe and efficient travel for road users.
Supplement to Victoria's Managed Motorway Design Guide, Volume 2: Design Practice, Parts 2 and 3	Main Roads' Supplement relating to: <ul style="list-style-type: none"> • Network optimisation tools (benefits and operation of coordinated ramp signals). • Planning and design for mainline, entry ramps (including ramp signals), exit ramps and interchanges.
Supplement to Victoria's Managed Freeways Handbook for Lane Use Management and Variable Speed Limits	Main Roads' Supplement relating to: <ul style="list-style-type: none"> • Lane use management system (LUMS). • Variable speed limits (VSL).

1.2 Purpose of this document

This document expands on Main Roads' corporate Smart Freeways policy. It is designed to provide a high-level statement of intent and principles to govern decision-making for active management of the freeway network, and considers all phases from planning to ongoing operation and maintenance. It seeks to ensure all Smart Freeways projects are complementary and aligned to achieve a common vision and outcomes, and should be referred to at an early stage for all projects on existing and future freeway routes in Western Australia.

The document covers the following key topics:

- background and policy context
- intended outcome and objectives
- policy principles, and
- governance and network application for design, implementation, operations and maintenance.

A description of the definitions used in the document is included in Appendix A.

1.3 Consultation

This Policy Framework Overview has been developed in consultation with key stakeholders across Main Roads and will be reviewed and updated on a regular basis by the designated custodian (Section 5.1.1).

The development of this document has considered the relevant guidance provided by Austroads and Infrastructure Australia, as well as the policy approaches taken by a number of other Australian and overseas jurisdictions that are developing Smart Freeways, or already have Smart Freeways in operation. This includes Victoria, New South Wales and Queensland in Australia as well as the UK and the Netherlands.

2 Background

2.1 Need for Smart Freeways

Freeways¹ are essential infrastructure for Western Australia's economy, providing for the safe and efficient movement of people and goods. As of June 2020, freeways and high standard arterial roads comprise 27 per cent (or 201 km) of the metropolitan state road network (746 km), yet include 54 per cent of the total vehicle kilometres travelled (VKT) in the AM peak and 57 per cent of total VKT in the PM peak.

Freeways need to be designed to provide free-flowing high-speed environments as they are the most productive and highest capacity road asset. They are important assets for Western Australia's economy, providing for the movement of people and goods throughout the urban areas.

Western Australia is expected to experience significant increased economic activity and population growth over the next decade and beyond. The Department of Planning, Lands and Heritage forecast a population of 3.5 million people in the Perth and Peel areas in 2050 (Perth and Peel@3.5million report (2018)). It is expected that significant levels of traffic growth will occur, and this could cause increasing congestion that would adversely impact social and economic activity in Western Australia.

The Infrastructure Australia, Urban Transport Crowding and Congestion (Australian Infrastructure Audit 2019- Supplementary report), in its report on congestion (2016) estimates the 'avoidable' cost of congestion for the Australian capitals to be approximately \$19 billion for the 2016 financial year, and predicted this cost to rise to \$39 billion by 2031. . For Perth, this corresponds to a rise from \$1.525 billion (2016) to \$3.6 billion (2031). The Government of Western Australia has committed to supporting the economic prosperity of the region by improving traffic flows and managing congestion on the freeway network.

Expansion of the freeway network to provide additional capacity is not always a feasible or the most effective solution to address congestion and accommodate current and projected traffic demands. The availability of land and funding may be insufficient for implementing the required infrastructure improvements and projects may not be aligned with community expectations of liveability and sustainability. Additionally, traffic flow characteristics cause unmanaged freeways to perform worse when demand is highest (i.e. during peak periods), making them more vulnerable to flow breakdown, congestion and incidents. Management and operation technologies are required for Western Australia's freeway network to operate at an optimal capacity and safety level.

Main Roads is committed to identifying management and operation solutions that reduce congestion and improve the productivity and efficiency of existing freeway infrastructure. This will enable the extraction of additional operating capacity from the freeway network to cater for increasing demand and to sustain performance during periods when demand is highest.

¹ Freeways are defined as highways with no access for traffic between interchanges and with grade separation at all intersections. All roads that are to be upgraded to planned freeway standard will also be considered for Smart Freeway design and ITS technologies.

2.2 Smart Freeways concept

ITS provide opportunities to improve network efficiency through the use of technologies incorporating equipment deployed on the roadside and operating systems. The integrated application of ITS technologies and operational strategies to the freeway network, referred to as Smart Freeways² has been adopted as a proven and cost-effective solution to improve freeway performance in Australia and worldwide.

Smart Freeways concept – Making the best use of the existing freeway network, particularly during times of high demand and traffic incidents. This is realised through the application of ITS and operation strategies that enable dynamic network management and operation in real-time. Smart Freeways treatments, complemented with appropriate mainline and ramp geometric improvements, work together as an integrated system to achieve and maintain optimal freeway traffic conditions, with minimal delays and congestion.

Smart Freeways help traffic operators to improve road safety and 'keep traffic moving' by actively managing mainline traffic flow, traffic demand, congestion and incidents. They also ensure that the full productive capacity of freeways is utilised, particularly during times of high demand incidents.

The Australian approach to an actively managed (smart) freeway network incorporates a number of technological and operational technologies to provide a safer and more reliable level of service for the network. Access control to the freeway with coordinated ramp signals is identified as the most effective management tool to achieve high levels of travel efficiency, productivity and reliability. Coordinated ramp signals have proven to be effective in sustaining capacity during peak periods by preventing, or delaying, the onset of flow breakdown and congestion. They also assist in recovery following flow breakdown.

Additional technologies that have a key role in achieving a safe and high performance freeway environment are all-lane running, variable speed limits and lane use management, supplemented by real-time traveller information and incident management systems. To achieve the best outcomes of these systems and provide road users with timely and relevant information on freeway conditions, network intelligence through real-time data collection and surveillance is also essential. This requires technologies such as closed circuit television (CCTV) cameras and vehicle detection systems. A description of key Smart Freeways technologies considered for deployment on Western Australia's freeway network is included in the Smart Freeways Provision Guidelines.

Smart Freeways technologies have been implemented in Australia through Victoria's M1 Project and are delivering demonstrable benefits and improvements in freeway safety, throughputs and travel speeds (see summary in VicRoads Managed Motorway Design Guide, Volume 2: Design Practice, Part 2 Managed Motorway – Network Optimisation Tools – Section 6 (2019)).

² Smart Freeways is the term that has been adopted in Western Australia. The Australian Federal Government, Victoria, NSW and Queensland use the term Managed Motorways.

At the Federal Level, Smart Freeways initiatives are being encouraged by Infrastructure Australia (IA) which lists the National Road Network Optimisation Program as a High Priority initiative in the Infrastructure Australia 2019 Infrastructure Priority List. The Federal Government is investing \$4 billion over the next 10 years in the Urban Congestion Fund, which is funding projects such as the WA Transforming Freeways Project, which includes widening as well as Smart Freeways technology. IA recognises that continued investment is needed across the transport network to ensure high quality, well integrated and reliable services are delivered. Infrastructure Australia (2019) believes that to address the problem of urban congestion across road corridors in Australia's capital cities, investment is required in initiatives that are focused on productivity enhancing network optimisation, as well as continued investment in new capacity.

Main Roads has developed the Smart Freeways concept in Western Australia to identify opportunities for addressing existing and forecasted problems on the freeway network and delivering benefits to road users. Smart Freeways are seen as an important initiative within the broader transport planning objectives of Main Roads' and the state government, and will be a major driver in the future development of Main Roads' network operation services. The policy context for Smart Freeways in Western Australia is detailed further in the following section.

2.3 Policy context

There are many drivers for the implementation of Smart Freeways in Western Australia, from both state and federal government levels. The Smart Freeways Policy (see Appendix B) reflects the priorities for the development of Western Australia's freeway network within the context of the wider Western Australia and national transport network.

The Smart Freeways Policy is intrinsically linked to broader transport planning and Main Roads' corporate strategies, to ensure it is built from strong fundamental principles that are at the core of Main Roads' corporate vision, while also supporting network management and operations service delivery objectives for the entire strategic road network.

To ensure consistent application of standards, principles and governance in Western Australia, the requirements in this Policy Framework Overview, Provision Guidelines and other design guidelines shall apply to planning, detailed design and/or construction across all freeways. The Smart Freeways Policy Framework documents are applicable to all projects within Main Roads as well as work carried out by consultants, contractors and potential future road operators, irrespective of how the project is being delivered or operated, e.g. includes projects that are related to design and construct, alliance and public-private partnerships, as applicable.

The strategic context for Smart Freeways implementation in Western Australia is illustrated in Figure 2-1.

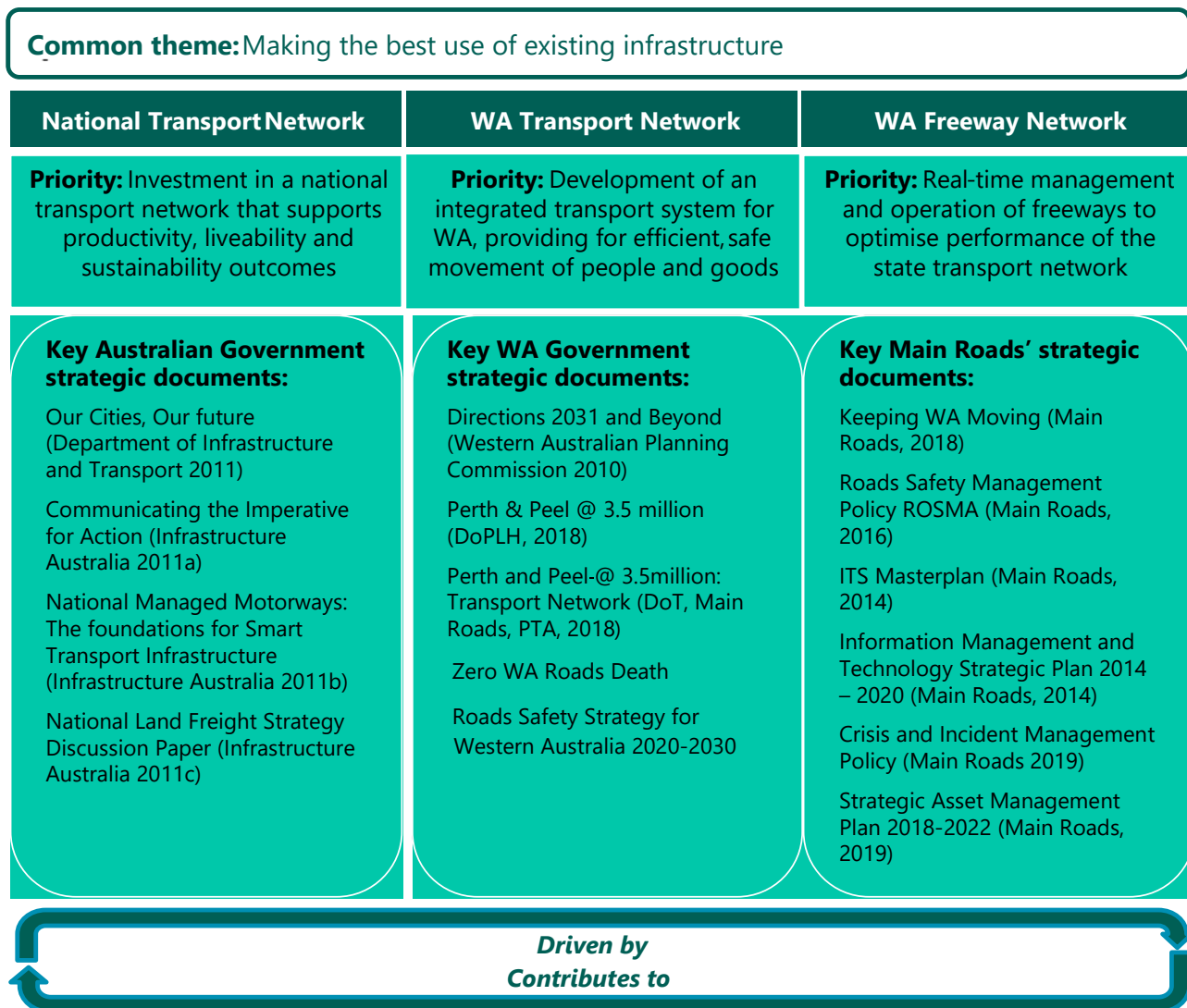


Figure 2-1: Strategic context for Smart Freeways in Western Australia

3 Intended outcomes and objectives

3.1 Smart Freeways policy

Main Roads is progressively introducing Smart Freeway solutions into our existing and future road assets, aiming to provide the safest, and most reliable, productive and resilient state roads for our customers. The policy is attached in Appendix B.

This will be achieved through considered application of Smart Freeways technologies that integrates innovative technology and operational strategies, supported by appropriate mainline and ramp geometric improvements, to deliver enhanced customer-focused services through stakeholder consultation. The active management of freeways will enable Main Roads to extract maximum value from this important asset.

Main Roads can only achieve its strategic direction of Keeping WA moving, and aspiration to provide world class outcomes for the customer through a safe, reliable and sustainable road-based transport system if it ensures a coordinated and cross-organisational approach to Smart Freeways delivery.

3.2 Applicable types of planning and implementation projects

The principles in this Policy Framework Overview and the other Smart Freeway guides can be applied to the following generalised work types:

Table 3.1: Types of work to which the Smart Freeways Policy Framework Outline is applicable

Work Type	Description
Existing freeway improvement	Retrofitting a new coordinated ramp signalling system to improve safety and productivity from existing infrastructure. Other localised works would generally be needed, including vehicle detection stations and improvements at entry ramps to provide required discharge capacity and storage.
Existing freeway upgrading	Where additional mainline capacity (widening) and improved interchanges are being provided to upgrade capacity and improve travel time reliability
New freeway design	Providing a new major link in the freeway network.

The construction of successful Smart Freeways projects will only be achieved by focussing on all relevant matters through the Main Roads RO&DS process and lifecycle:

- assess
- select
- develop
- deliver, and
- operate.

3.3 Smart Freeway outcomes

A successful Smart Freeway is defined as one that delivers improvements for users of the freeway network and the wider community in the following areas:

- **Safety** – for all road users, including minimisation of freeway flow breakdown and congestion during operations, as well as the safety of road workers and maintainers during incidents.

Desired outcome – reduced incident rates and severity.

- **Productivity** – of the existing freeway infrastructure.

Desired outcome – optimal vehicle throughput (vehicles per hour) .

- **Efficiency** – of vehicle movements in terms of travel speeds, particularly during peak periods.

Desired outcome – improved average travel speeds.

- **Reliability** – of travel conditions from day-to-day.

Desired outcome – less variable and more reliable travel times.

- **Driver experience** – of travelling on the network, including provision of real-time traveller information.

Desired outcome – informed and satisfied road users.

- **Sustainability** – for the community.

Desired outcome – positive economic, social and environmental outcomes³.

- **Resilience** – of the transport network.

Desired outcome – flexibility in responding to abrupt changes in demand or capacity and rapid recovery if flow breakdown occurs.

- **Transforming freeways to 'smart roads'** – in preparation for future co-operative ITS (e.g. vehicle-to-infrastructure communications).

Desired outcome – freeway infrastructure and vehicle technologies are part of an integrated system that delivers maximum travel and safety benefits to road users.

As appropriate, individual Smart Freeway projects should develop SMART (Specific, Measurable, Attainable, Relevant and Timely) performance objectives as well as performance targets and evaluation measures against each of these areas, depending on the specific circumstances of the freeway.

It is understood that achieving improvements in these areas will deliver a range of social, economic and environmental benefits to road users and the community, whilst supporting traffic operators and asset managers in carrying out their responsibilities for effective road network management and operations (see Figure 3-1).

³ For example, this could include: minimising vehicle operating costs; enhanced road-user experience and contributing to improvement in quality of life through savings in travel time, reduction in emissions (per unit of travel), maximising the return on capital investment in the road network by optimising its efficiency and productivity, and deferring or avoiding the need for expansion of the existing network.
Document No: D20#550472

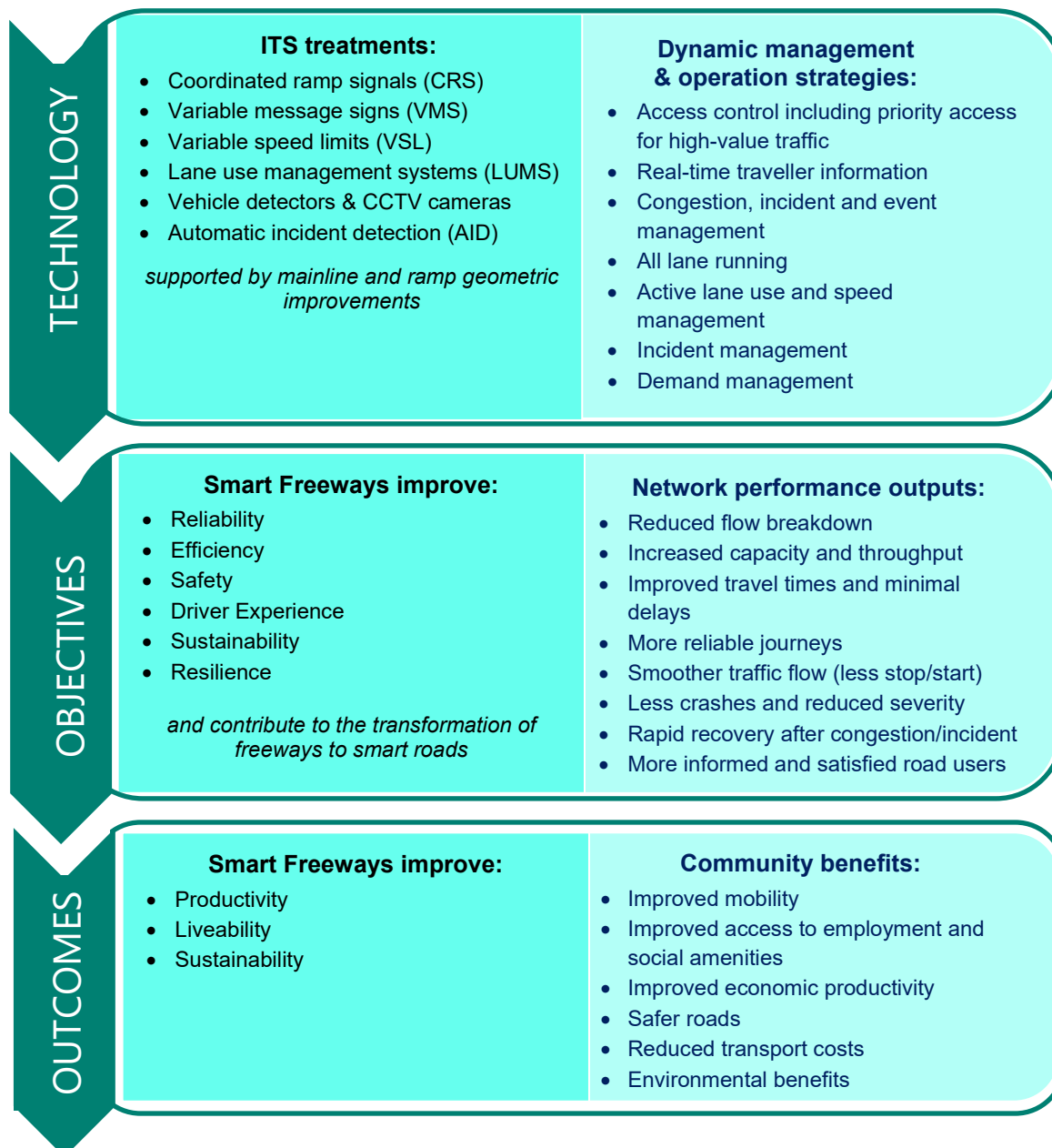


Figure 3-1: Smart Freeways technologies, objectives and outcomes

3.4 Key enablers

To accomplish the desired outcomes of Smart Freeways, organisational development, with a strong focus on the operational backbone, is essential. This will require action in the following areas:

- **Effective and integrated planning** – so that Smart Freeways is integrated with Main Roads' longer-term planning for freeways and the wider road network.
 - *Desired outcome* – Smart Freeways solutions are considered alongside other solutions for future development of Main Roads' network at an early stage in the planning process, recognising that Smart Freeways technology planning horizons are around 10 years.
- **Enhanced awareness of Smart Freeways philosophy** – achieving awareness and understanding of the Smart Freeways concept and benefits.

- *Desired outcomes* – all directorates have embedded Smart Freeways considerations and requirements in their decision-making processes and strategies.
 - » all directorates accept their leadership roles and responsibilities for successful implementation and operation of Smart Freeways.
- **Organisational capability development** – building and sustaining the required resources with suitable skills for all phases of implementation, from planning to operation and maintenance.
 - *Desired outcome* – Main Roads has sufficient staff with the skills, knowledge and experience to implement and operate Smart Freeways, engaging external consultants or contractors as required.
- **Managing innovation** – encouraging its adoption in a controlled and risk-conscious environment.
 - *Desired outcome* – Smart Freeways exploits innovative technology and operational strategies which have demonstrable and clearly understood benefits with minimal or well-considered risks.
- **Commitment to pursue opportunities for funding** – for all phases of project delivery and operations.
 - *Desired outcome* – Main Roads has scoped and secured sufficient budget for successful planning and construction of Smart Freeways, including the technology and operational strategies, as well as budgets and resource commitments for the ongoing operational and asset management tasks.

4 Policy foundations

The complexity of Smart Freeways requires a strong understanding of the critical elements underpinning their success. Main Roads has learned from, and build on, the experience of other jurisdictions, and apply this to the Western Australia context, improving on what has been delivered previously.

The following key foundations underpin the Smart Freeways Policy and provide guidance for planning, project development, delivery and ongoing operation and maintenance of Smart Freeways projects to achieve the desired outcomes.

4.1 Integrated transport planning

Smart Freeways is one available solution to improve the efficiency and productivity of Western Australia's freeway network. It may not be the only solution for addressing all current and future congestion and network performance issues. Other solutions may include a combination of alternative management options, e.g. demand management strategies, as well as road infrastructure (capacity) upgrades and public transport improvements.

The key principles are:

- Prior to the implementation of Smart Freeways, the strategic objectives of the project need to be determined and the most appropriate solution needs to be defined. In some situations, other or additional solutions may be more effective to achieve the desired outcomes.
- Smart Freeways solutions can help to reinstate the suppressed or wasted operational capacity on freeways and operate them at optimum efficiency during times of high demand. This will delay, or in some cases, avoid the need for large capital expansion, while utilising the existing road assets more efficiently. However, coordinated ramp signals benefits alone may not be sufficient when freeways reach their ultimate capacity, and require integration with longer-term network planning and capacity upgrading needs. These projects may also consider other solutions to manage future traffic demand and associated issues. The planning horizon for Smart Freeways ITS is generally ten years.
- Smart Freeways should be applied in a coordinated manner with other transport solutions to form an integrated transport system for Western Australia.
- Smart Freeways are led by an operational approach, therefore it is important to identify and understand the transport issues across the network prior to the specific and detailed problem assessment, options analysis and solution prioritisation.
- The full benefit of Smart Freeways can only be realised if a whole-of-network approach is taken to enable controlled access and prevent situations where unmanaged freeway sections adversely impact Smart Freeways performance or vice versa.
- Upgrade of a freeway section may have adverse effects on an adjacent section of freeway, for example by increasing traffic volumes, which may result in the adjacent section also requiring Smart Freeways solutions. Through the whole-of-network approach, the design of individual Smart Freeway or capacity upgrade projects should consider and address the impacts on the interfacing freeway network.

- Smart Freeways aim to improve the overall efficiency of the road network, including the surrounding arterial and local road network, so that the traffic flows are more efficiently distributed across the entire road network subject to the functionality of the road.
- Congested freeways can have significant adverse effects on traffic flows on the strategic and local road network. Smart Freeways can help to address this by improving throughput on the arterial network during peak periods, however, this may have some localised adverse impacts on connecting roads. The VicRoads Managed Motorway Design Guide Volume 2: Design Practice, Part 2: Managed Motorway – Network Optimisation Tools (June 2019) indicates that *"the overall economic imperative is that when necessary, freeways should be given priority over arterial roads and, where this would result in a negative impact on the arterial network, this should be managed accordingly to provide a net overall gain to the system's users"*. Appropriate design strategies can be implemented to minimise impacts of Smart Freeways operations on the adjacent road network, for example maximising ramp storage at freeway interchanges where ramp signals are installed to prevent queues extending onto arterial roads.
- The operational strategies developed specifically for Smart Freeways should be fully integrated within the operational strategies applied to the wider road network.
- Smart Freeways technologies should be applied to sections of freeway where they provide a higher benefit-cost ratio and a more sustainable solution, compared to alternatives including traditional network improvement projects (e.g. capital expansion). This comparison should be detailed in the business case for Smart Freeways projects as appropriate.
- Smart Freeways shall be considered for incorporation in the scope of all new build and upgrade projects for the freeway network, and be delivered as an integral part of the project at the time or in the future as appropriate. The freeway shall be designed to facilitate progressive implementation of Smart Freeways when the technologies are required, for example at opening or after an acceptable future time (i.e. five to ten years), depending on the predicted increase in demand.

4.2 Smart Freeways technologies

Smart Freeways can incorporate a range of ITS technologies (i.e. field equipment, communications and central control system) as well as operational strategies. This enables delivery of user-driven services, for example minimisation of mainline flow breakdown, congestion, incident management and provision of traveller information.

A description of key Smart Freeways technologies considered for implementation on Western Australia's freeway network is included in the Provision Guidelines.

The Smart Freeways 'toolkit' should be applied to a section of freeway according to the following principles:

- Depending on the circumstances of the problem and the traffic situation, a combination of complementary technologies is likely to deliver the best outcomes, as opposed to deploying individual technologies in isolation. However, it may not be necessary to use all available technologies and operational strategies for each project.

- The most appropriate technologies to be applied will be subject to various factors and characteristics of the freeway. Analysis of the current and predicted future traffic conditions should be undertaken to determine the problems to be addressed and to help identify the best solution. Selection of Smart Freeways technologies and their combination, therefore, depend on the circumstances of the problem to be resolved or the targeted road user services to be provided. The technologies should work together as part of an integrated system.
- Interventions may also include localised mainline or ramp geometric improvements to achieve optimal configurations of the carriageway for maximum operational efficiency, for example, to remove bottlenecks caused by lane drops. These should be considered at the start of the planning process.
- Geometric changes may also be required for implementation of specific technologies, for example, coordinated ramp signalling may require lengthening and/or ramp widening for required design ramp discharge capacity and queue storage.
- Other types of technology include fixed signing and road marking strategies to support effective network operations, for example, merge warnings at appropriate distances.
- A standardised approach is to be applied for determining design volumes for capacity analysis and design. This will ensure that consistent assumptions are applied and that outputs from analyses are comparable.
- It is important to understand the intended individual and aggregate impact of the technologies on road user and traffic behaviour, which ultimately drive Smart Freeways performance.
- All future freeways will, as a minimum, have real-time network monitoring capability and intelligence, and provision for higher order Smart Freeway treatments when needed (Section 5.2).

Note: Further information on Smart Freeways technologies to be used in Western Australia, including guidelines and warrants for deployment, are provided within the Smart Freeways Provision Guidelines which is part of the Smart Freeways Policy framework documents.

4.3 Real-time data collection

Traffic control and provision of travel information are the core functions of a dynamic and responsive traffic management system. However, it cannot be managed if it is not measured, therefore, network intelligence is required. The backbone of Smart Freeways operations is the real-time collection, analysis and management of accurate data on traffic flow characteristics and network conditions. The information generated from this data enables road operators, as well as road users, to make informed, safer and more coordinated decisions and 'smarter' use of the network.

Smart Freeways requirements for real-time data collection are of a much higher level of accuracy and availability than that which was needed in the past for traffic operators and historical performance reporting. Hence, technical specifications are required, and traffic data collection devices and systems deployed and maintained to specified Smart Freeways maintenance intervention levels.

Smart Freeways should facilitate:

- Automatic collection of detailed real-time traffic flow characteristics and system performance data.
- Communication of the data to a central control system, where the data will be processed, validated and archived.
- Real-time dissemination of information to road users and other internal and external stakeholders.
- Ongoing network and system performance monitoring and reporting.

4.4 Ongoing operations and asset management

Smart Freeways use sophisticated and dynamic technologies governed by operational strategies to monitor and evaluate network performance and respond to changing traffic conditions. These technologies form part of the whole-of-network-operation approach of Main Roads that incorporates:

- One common operational management system and user interface for all ITS technology, referred to as the central control system, including Smart Freeways, traffic signals, and metropolitan and rural remote ITS (Note: Main Roads' tunnel control system works independently but this may be integrated with the central control system in future).
- Real-time active management of traffic flow on the freeway network, governed by operating strategies.
- Collection and storage of real-time data, and provision to third parties.
- Ongoing proactive and reactive maintenance (see Section 5.7).

The technologies that partially operate automatically, as well as the traffic operators, who have critical input to guide system response and interact with stakeholders, are both essential elements for the effective operation of Smart Freeways.

As a result, a commitment to ongoing operational and asset management efforts is essential for achieving Smart Freeways benefits. This can be facilitated by adhering to the following principles:

- Smart Freeways may provide cost-effective solutions for improving the productivity of an existing freeway asset, however, they should not be necessarily considered as 'low-cost', as for most freeways there will be works associated with upgrading the entry ramps, ramp signals and VDS. The business case for funding of Smart Freeways should consider the whole-of-life costs of ITS technologies and make provision for recurrent costs for ongoing operations and maintenance.
- Strategies for Smart Freeways operations and asset management should be developed and implemented. The strategies should be tested and regularly reviewed.
- Smart Freeways should be operated from Main Roads' ITS central control system. Operational efficiency will be achieved if all ITS operations across the network are integrated with this system.
- Traffic operators should be given comprehensive training on the desired outcomes of Smart Freeways and how to achieve this through appropriate application of operational strategies.

- Smart Freeway design should consider maintenance requirements to facilitate improved efficiency and safety of maintenance practices.
- Maintenance service contracts should incorporate restoration targets and intervention levels that are aligned with the criticality of the technology components for delivering an end-user service.
- Maintenance considerations should take into account the relatively short life span of ITS assets compared to the roadway infrastructure, and the funding needs for asset renewal or replacement.

4.5 Freeway performance management

Ongoing performance management is required to understand whether a Smart Freeways project is continuing to meet its objectives and to ensure the technologies are working appropriately i.e. have the desired benefits for road users. This involves:

- monitoring of traffic characteristics
- freeway performance analysis and evaluation
- reporting against freeway performance indicators / measures
- optimisation and adjustment / fine-tuning of settings and algorithms, and
- real-time system performance management.

As a result, performance management should be embedded in the organisational framework for Smart Freeways. Current performance monitoring and reporting regime may need to be reviewed and adapted for Smart Freeways performance reporting.

Key principles for performance management are:

- Freeway performance monitoring and analysis is undertaken centrally and reported periodically.
- The freeway performance (real-time and historical analysis) is monitored and optimised by the freeway performance team.
- RNOC manages, records and reports on incidents and the type of incidents occurring.
- Monitoring and evaluation of Smart Freeways projects shall be undertaken for performance reporting to funding bodies and to confirm that benefits are realised, as well as to inform the design and delivery of future Smart Freeways projects. This will require 'before' and 'after' traffic and safety data. Note that safety benefits can only be fully determined after at least 3 years of operation, although trends may be apparent within that period.
- Freeway performance evaluation measures should be well-defined and quantifiable where appropriate. It is useful to define these measures early in the planning process so that the required data is collected.
- Monitoring and evaluation should also measure road user and community satisfaction and perceptions of Smart Freeways.

4.6 Stakeholder engagement

Smart Freeways is a relatively new concept in Western Australia. Therefore, the potential benefits of Smart Freeways and particularly the various technologies need to be communicated clearly to road users. An environment of trust is important for successful implementation of Smart Freeways projects.

Early and ongoing stakeholder engagement and education is imperative for realising the benefits of Smart Freeways, through achieving:

- **Main Roads shared ownership** – supporting the development of collaborative relationships (including workshops and training) with key internal stakeholders to ensure they are involved in the development of the projects recognising the longer-term roles they play in planning, design, delivery, operation and maintenance of Smart Freeways.
- **Political acceptance** – clearly communicating the business case and performance outcomes in the context of high-level transport strategies to secure ongoing funding commitments.
- **Public awareness and acceptance** – consultation and education programs (e.g. driver education campaigns) to facilitate road user understanding of how Smart Freeways work and the benefits their effective use will bring.
- **Community acceptance** – reassuring the community that the impact of Smart Freeways on the local environment will be minimised and that Smart Freeways can help to reduce traffic impacts (e.g. air quality and noise).
- **Emergency services partnership** – working collaboratively with emergency services to determine effective incident response arrangements and protocols.
- **Police partnership** – working collaboratively with the police to optimise incident response and also to identify and implement appropriate enforcement mechanisms to encourage compliance with the Smart Freeways technologies.
- **Local government involvement** - working with local government to sustain safety and travel efficiency on the local road network and maximise benefits for the entire transport network.
- **Priority user needs** – understanding priority user needs (e.g. freight, public transport and emergency vehicles) to inform the design of priority access technologies.
- **Industry support** – facilitating mutually beneficial knowledge transfer to ensure the practicalities of implementing ITS are understood and considered in the design process, and to facilitate capability development within both Main Roads and industry.
- **National collaboration** – sharing best practice and knowledge with the other state road authorities (e.g. directly or via Austroads Network Taskforce).
- **Knowledge transfer** – learning from the experience of Smart Freeway implementation in other jurisdictions and from researchers.

A set of mechanisms will assist Main Roads in the stakeholder engagement process, including:

- **Stakeholder engagement strategy and plan** – that incorporates communication strategies and plans by individual projects which target all stakeholder groups, that are updated regularly while the project progresses.

- **Smart Freeways internet site** – for dissemination of Smart Freeways-related information.
- **Knowledge transfer program** – to achieve internal and external familiarity with the Smart Freeways concept and related ITS technology and operational topics.

4.7 Driver behaviour and compliance

Road users are an integral part of Smart Freeways, interacting dynamically with vehicles and the road infrastructure, and responding to information presented to them. Smart Freeways aim to influence driver behaviour and a high level of compliance is essential to achieve maximum effectiveness. The following principles should be considered to ensure Smart Freeways influence driver behaviour in the right way and minimise driver frustration:

- Understand the desired driver behaviour to achieve the project objectives.
- Create a self-compliant driving environment, where road users comply with instructions in an intuitive manner because they understand the benefits delivered by Smart Freeways to themselves and other drivers, as well as the risks associated with non-compliance.
- Use appropriate algorithms to control traffic in a reasonable way from the start of operations, so that drivers trust and comply with the instructions.
- Ensure that the instructions and information given to road users are timely, accurate and appropriate for the situation.
- Identify appropriate mechanisms for encouraging compliance including education programs and enforcement. It needs to be noted that Smart Freeways will be a new driving experience for many Western Australia motorists. A focus on enforcement communicates a negative message and may undermine the community's willingness to take up the technology. Therefore, Smart Freeways needs to ensure traffic control measures, e.g. variable speed limits are appropriate for the circumstances. A period of grace may be needed while motorists learn to understand the new traffic requirements, before extensive enforcement is implemented (in some jurisdictions, it is noted that enforcement at ramp signals is generally not required (see Provision Guidelines Section 6.6). A focus on education is important, particularly during an initial period of implementation.
- Enforcement approaches should be considered in relation to specific technologies. For example, in the case of coordinated ramp signalling, occasional non-compliance does not usually result in any inherent safety issues. Hence enforcement should only be considered when the observed compliance levels are significant.

4.8 Road user and safety perspective

The design of Smart Freeways is targeted to achieve optimal safety, network efficiency and productivity. During the design process it is important that the designer understands the road user and safety perspectives and the implications of design decisions.

In the road user and community perspective, Smart Freeways should:

- Provide an intuitive and consistent driving experience across the entire regional and national freeway network.
- Consider options for achieving further benefits for priority users including freight, public transport and high occupancy vehicles (HOV), where appropriate, and that it does not compromise the overall effectiveness of the Smart Freeway.

- Take into consideration construction and maintenance requirements to minimise inconvenience to road users during road works and maintenance activities.

In the perspective of road safety Smart Freeways should:

- Take a risk-based approach so that road user safety is at the core of the design process, i.e. ensuring design decisions reflect Smart Freeway design principles to prevent / minimise the potential for flow breakdown.
- Be designed not only to improve road safety for road users but also for people working on the network, including incident response teams, maintenance contractors and road workers. For example, the design should incorporate sufficient provisions for contractors to perform maintenance activities safely without major disruptions for traffic flow.

4.9 Network operations planning process

Due to the complex nature of Smart Freeways, a coordinated and integrated approach is required for the governance and delivery of Smart Freeways projects. Main Roads has developed a Network Operations Planning Framework (NOPF) (ARRB / Main Roads WA, 2014) which recognises the competing demands for road space and functionality from various road user groups, and focuses on providing an evidence-based and participatory approach to the planning of traffic management and operation of the road network, to better optimise the use of road assets to meet customer's requirements through technology and collaboration with stakeholders.

The NOPF shows the importance of the inter-relationship between infrastructure plans for the construction of new road projects and the role of network operations in the planning and implementation process. The planning framework is an iterative process combining infrastructure and non-infrastructure solutions to achieve the best performance of the network operation.

The planning process provides road network managers, planners and operators with sufficient guidance, without being too prescriptive, to facilitate best practice and a consistent approach to planning for road network operations to achieve desired outcomes. The planning process consists of eight steps from the scoping of the project to the implementation and use of the Network Operations Plan, and includes feedback loops and required deliverables as summarised in Figure 4-1.

Another approach that has been used internationally is the systems engineering approach that focusses on the management of systems projects and ensures outcomes of the project are in line with both the clients' and the end users' needs (see Section 4.10).

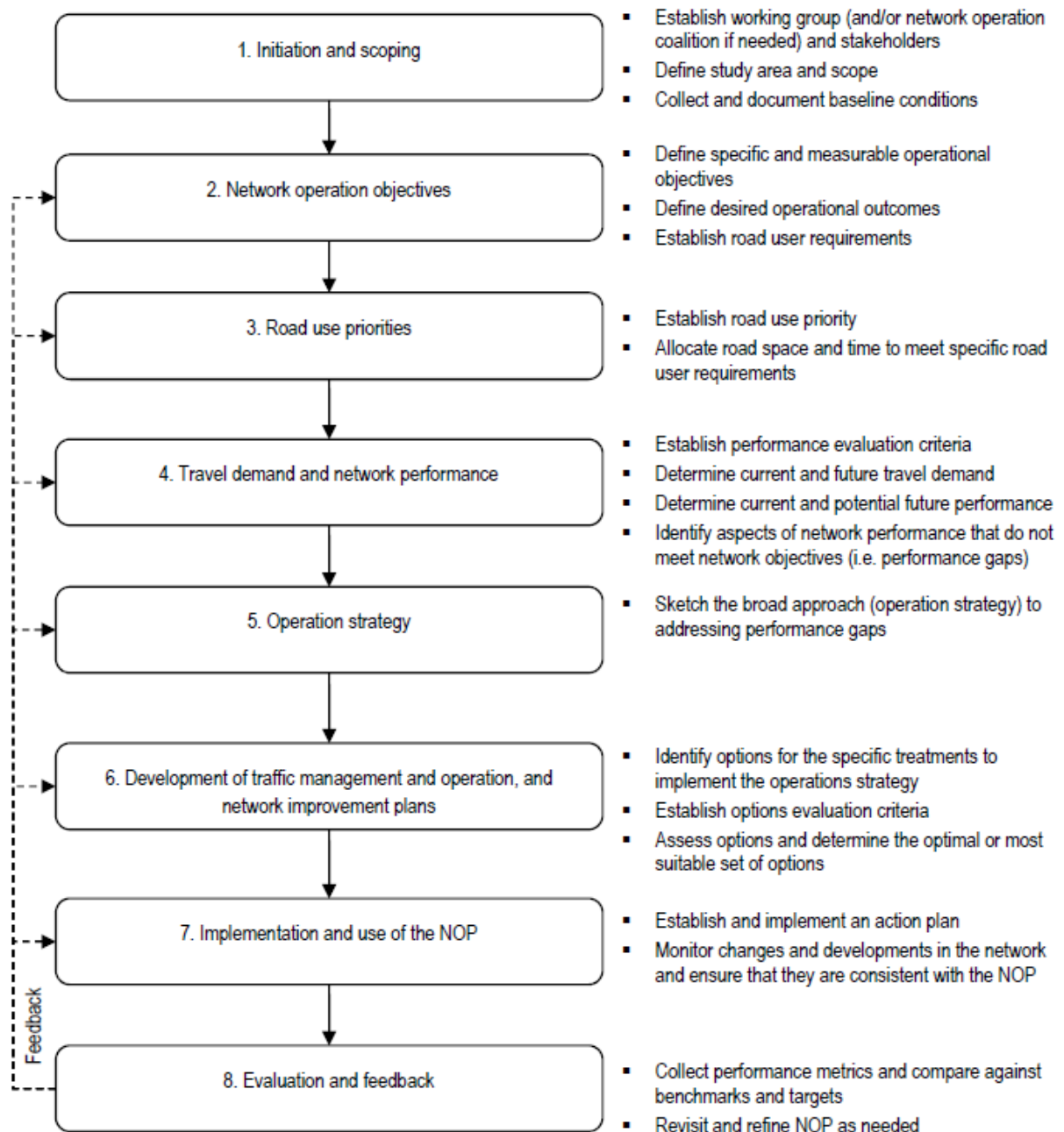


Figure 4-1: Summary of Main Roads' Network Operations Planning Process

Encouraging use of the Network Operations Planning Process for all Smart Freeways projects ensures that the intricacies of network operations planning such as road user priorities, integrated transport system objectives, effective problem assessment, development of project plans, delivery and operation, maintenance and evaluation are made inherent parts of Smart Freeways requirements.

4.10 Systems engineering approach

In addition to the Network Operations Planning Framework, the systems engineering approach to ITS projects is a useful tool to adopt to manage the Smart Freeways projects and to ensure outcomes of the project are in line with both Main Roads' and the road users' needs. Systems Engineering provides an integrated and structured set of methodologies for successful implementation and management of ITS projects. The approach promotes up-front planning and system definition prior to technology identification and implementation. Documenting stakeholder needs, expectations, the way the system is to operate (concept of operations), and the system requirements (what the system is to do) prior to implementation leads to improved system quality.

Both the US (Federal Highway Administration 2009) and the Netherlands (Rijkswaterstaat 2008a) have developed a Systems Engineering approach to:

- Improve the quality of the outcomes by promoting up-front planning and system definition prior to technology identification and implementation.
- Reduce the risk of costs and schedule overruns by promoting stakeholder engagement throughout the project development, and improving project control with clearly defined decision points.
- Gain wide stakeholder participation through a common and standard development process that enables stakeholders to understand and actively participate in the development.
- Maintain, operate and evolve the technologies used through clear documentation of the requirements, design, verification, development and support phases.
- Maintain consistency with the state and national ITS / Smart Freeways architectures.
- Provide flexibility in procurement options and ensure proprietary developments are minimised, proprietary sub-systems are identified and the use of industry standards is promoted.
- Keep up-to-date with the rapid evolution of the technology through the promotion of system modularity and the use of standard interfaces where possible (i.e. plug and play).

In line with the systems engineering approach developed in both countries, a model of six phases is defined throughout the life cycle of a project (Figure 4-2). The model illustrates the key principles of the relationship between the early phases of planning a project and the end results - the life cycle approach. A characteristic of ITS projects is that the systems and processes can be renewed during the user phase and can be executed several times during the project's lifecycle. The specification, design and production phases during the project lifecycle are graphically depicted in Figure 4-2.

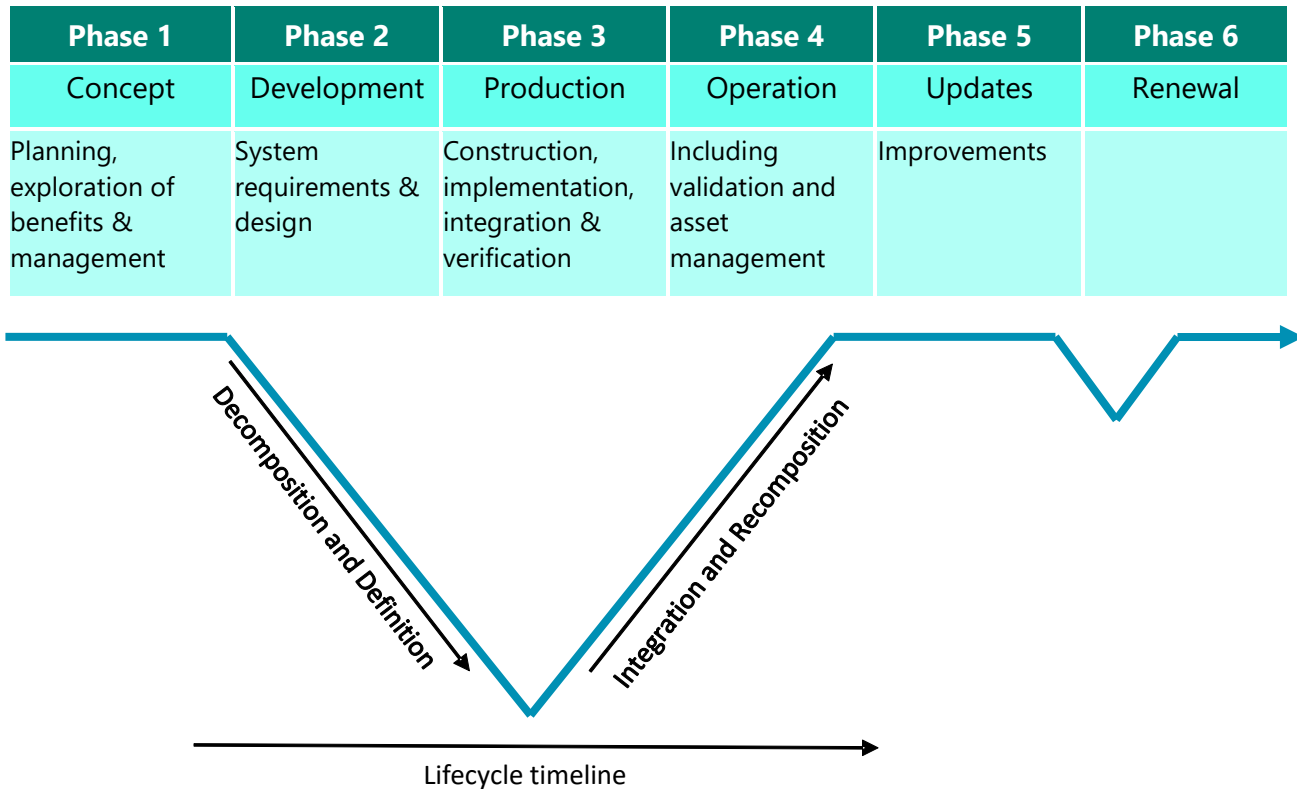


Figure 4-2: Simplified systems engineering project lifecycle

4.10.1 Key principles

In relation to both the Network Operations Planning Framework and the systems engineering approach, the following key principles for planning Smart Freeways projects apply:

- The planning process and development of key deliverables for each Smart Freeways project should be in line with the Network Operations Planning Framework.
- To ensure the deliverables of the Smart Freeways projects meet Main Roads' and the road users' needs a systems engineering approach should be adopted to manage the Smart Freeways project. This means encouraging a focus on the system definition prior to technology identification and implementation, i.e. includes identifying intended traffic outcomes as well as the designs and devices needed to achieve those outcomes.
- Documenting stakeholder needs, expectations, the way the system is to operate and the system requirements.
- Separate operational efficiency and road safety audits should be carried out by suitably qualified and independent experts at the concept design stage and detailed design stages.
- Main Roads should identify and manage all risks associated with all phases throughout the project, using a defined risk management process. Risks should be transferred to those most able to handle the risk, e.g. contractors.
- All Smart Freeways technologies should be verified and validated by testing the functionality of the technologies and operational strategies before the system goes live.

- Parallel projects should be undertaken at early stages of the planning and design process to support the deployment of the ITS equipment on the network, for example, upgrades of the IT and communications infrastructure. The critical path for delivery of parallel projects in relation to delivery of Smart Freeways and other ITS projects should be determined.
- It may be necessary to review existing legislation and regulations at an early stage to identify any potential barriers or requirements for Smart Freeways implementation.

4.11 Procurement of ITS technology

As procurement of the right technology is critical to the successful operation and perceived effectiveness of Smart Freeways, the following principles apply:

- The technology used shall have demonstrated performance specifications from the manufacturer (particularly systems and vehicle sensors), and desirably be proven in other road authorities and shown to be delivering measurable results.
- Smart Freeways systems shall integrate and be compatible with Main Roads' existing ITS and operating environment or have the ability to replace existing systems, so duplication of applications and information will be minimised.
- Procured technology shall be compatible with the Smart Freeways central control system and communication systems operated by Main Roads. Where new functionalities are required to the control system or an expansion of the communication system is required, this shall be costed within the procurement. The Main Roads control system contractor shall confirm during the tender process that he can deliver any proposed software changes required by the Smart Freeways delivery contractor (drivers for new devices and any system changes etc.) to meet the delivery timelines of the project, and that the cost and risk profile of these works are appropriately included in the tender evaluation assessment.
- The product purchased should preferably be an off-the-shelf product but with compatible drivers to interface with the Main Roads central control system, i.e. with minimal configuration and customisation required for use on the Western Australia road network. However, opportunities for innovations should be sought taking into account appropriate risk management measures.
- The products procured shall be capable of continuous improvement. Performance and improvements can be monitored and are measurable.
- The technology used shall be sustainable and readily scalable for network expansion and additional functionality.
- Procurement of new and upgraded technologies shall align with best practice and adequate up-to-date standards and guidelines.
- Existing design standards and specifications may need continual review and be amended where appropriate to accommodate Smart Freeways requirements.
- Procurement documentation shall generally define the purpose (why) and functionality (what) of the technology rather than the technical specification (how), in order to give industry the opportunity to introduce innovative solutions.

- Procurement shall consider evolution of advanced ITS technologies, such as cooperative ITS systems (i.e. vehicle-to-infrastructure communications) that may be incorporated in Smart Freeways in the future.
- The costs of the technology procured will be assessed based on the whole-of-life costs and will reflect positive value for money.
- 'Design for maintenance' principles shall be incorporated in the design of the technology.
- Product upgrades, support, service level agreements and training shall be readily available and accounted for in the procurement process.
- Procurement of the technology shall be through contractors that are best able to provide or source the equipment or work required and have experience with the requirements, with consideration to the 'buy local' policy of Main Roads.
- A service level agreement (SLA) shall be arranged with the contractor on critical pieces of the technologies supplied, to ensure the reputation of the Smart Freeways concept. The SLA might specify the levels of availability, serviceability, performance, operation and other attributes related to the guarantees and warranties of the system delivered.
- A requirement for the testing and commission of equipment shall be included in the contract specification.

4.12 Organisation development and people readiness

Smart Freeways has involved the application of skills and knowledge to new areas, as well as the development of new skills and knowledge. It has required forward-thinking leadership to mobilise staff and the wider industry, whilst managing the risks associated with application of innovative technologies and network operations. There has also been the need to expand current staff resources due to more intensive ongoing operational and asset management functions.

To ensure that Main Roads has the continuing organisational capability to deliver and operate Smart Freeways into the future, a systematic approach is required to identify resource requirements and maintain appropriate capabilities. This approach involves:

- Continuing awareness and understanding of the Smart Freeways principles and benefits throughout Main Roads, ensuring that all Directorates involved have embedded Smart Freeways considerations and requirements in their decision-making processes and strategies.
- Consideration of Smart Freeways related resources as well as appropriate training and capability development strategies.
- Continuing the identification of new and changing Smart Freeways capabilities, functions and skills required for each phase of the project lifecycle, from concept and development to operation and asset management. This includes specific skills required for the design of communications infrastructure, systems engineering, and testing and commissioning of ITS technologies as well as the traditional civil, traffic engineering and ICT skills.
- Encouragement of innovation through carefully considered research and development trials and a controlled and risk-conscious environment, where innovative technology and operational strategies are procured that have demonstrable and clearly understood benefits with minimal or well-considered risks.

- Development of skills and expertise to be encouraged by fostering mutually beneficial partnerships with other road agencies, industry, universities and research institutions.
- Securing of sufficient budget for continuing development and construction of Smart Freeways as well as budget for the ongoing operational and asset management tasks and resource commitments.

5 Governance and implementation

5.1 Governance

Effective governance of Smart Freeways and related projects is essential to ensure sound outcomes. These need to be informed by different perspectives of specialist project stakeholders and the community for this high profile and complex infrastructure program.

5.1.1 Smart Freeways policy framework

The Smart Freeways Policy, Policy Framework Overview and other guideline documents are the basis for Main Roads' planning and design guidance for Smart Freeways projects in Western Australia. These documents provide direction for incorporating Smart Freeways requirements in all projects on the freeway network.

Smart Freeways Policy is a Main Roads' corporate policy approved by the Managing Director of Main Roads. Executive Director Network Operations is the custodian of this policy document.

The Director Congestion and Movement Strategy is the owner of the following Smart Freeway documents:

- Policy Framework Overview.
- Provision Guidelines.
- Variable Message Signs Guidelines.
- Operational Efficiency Audit Guidelines.

The Executive Director Planning and Technical Services has responsibility for the geometric design standards of all Smart Freeways and is also the owner of the following Smart Freeway documents:

- Supplement to Victoria's Managed Motorway Design Guide Volume 2: Design Practice - Parts 2 and 3.
- Supplement to Victoria's Managed Freeways Handbook for Lane Use Management and Variable Speed Limits.

The above Smart Freeways documents shall be reviewed and updated from time to time as required to keep abreast of changes in technology, standards and practices.

There is shared responsibility for considering any design or operational departures from the Smart Freeways documents and their approval as outlined in Section 5.6. Any departures from the Smart Freeways' requirements or other design guidelines are to be formally documented and signed-off as part of an auditable process.

The Executive Director Infrastructure Delivery is responsible for delivery of Smart Freeways' projects, while the Executive Director Network Operations is responsible for operation of Smart Freeways. The Executive Director Metropolitan and Southern Regions is the owner of the Smart Freeway assets.

5.1.2 Steering committees

Smart Freeways Steering Committees may be set up from time to time to review policy and guideline documents, and/or specific design, traffic management or other management areas needing a specific focus.

5.2 Network application and implementation

The long-term vision is that Smart Freeways are to be considered for all existing and future freeway standard roads in Western Australia. The freeway network applicable to the 2031 and 2041 planning horizons are shown in Table 5.1 and on the maps in Figure 5-1 and Figure 5-2.

The network planning information should be considered indicative for project development as circumstances relating to development and network assumptions, as well as available funding for improving the network, will change over time. For any specific project, there will also be a need to consider scope relative to Smart Freeway warrants (see Smart Freeway Provision Guidelines) and detailed analysis from both a local and freeway corridor perspective. The corridor perspective shall also consider areas outside the 'formal' limits of the project.

Table 5.1: Smart Freeways future network extents

Freeway	2041 Smart Freeway Extent - both directions	2041 Smart Freeway Extent – inbound only
Mitchell Freeway	Narrows Bridge to Romeo Rd	
Kwinana Freeway	Narrows Bridge to Mandjoogoordaup Drive	
Graham Farmer Freeway	Mitchell Freeway to Great Eastern Highway	NA
Reid Highway	Mitchell Freeway to Roe Highway	NA
Roe Highway	Reid Highway to Kwinana Freeway	NA
Tonkin Highway	Gnangara Road to Armadale Road Road)

In the shorter term the focus is on high-demand and congested sections, and programmed road projects on the freeway network. Main Roads has completed the initial application of Smart Freeways on the Kwinana Freeway in the northbound direction, north of Roe Highway. The project demonstrates the benefits and constraints of Smart Freeways design and operations leading to a wider network assessment of the Smart Freeways concept. Main Roads Smart Freeways Policy is to progressively introduce Smart Freeway solutions to our existing and future freeways.

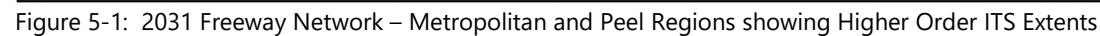
A broader implementation program, which provides for delivery of Smart Freeways projects metropolitan-wide in a progressive and systematic manner is underway as part of the Transforming Freeways Strategy. This program defines the required staged approach and prioritisations (road sections and type of technologies) and is being informed by network analysis and modelling to identify current and future performance issues.

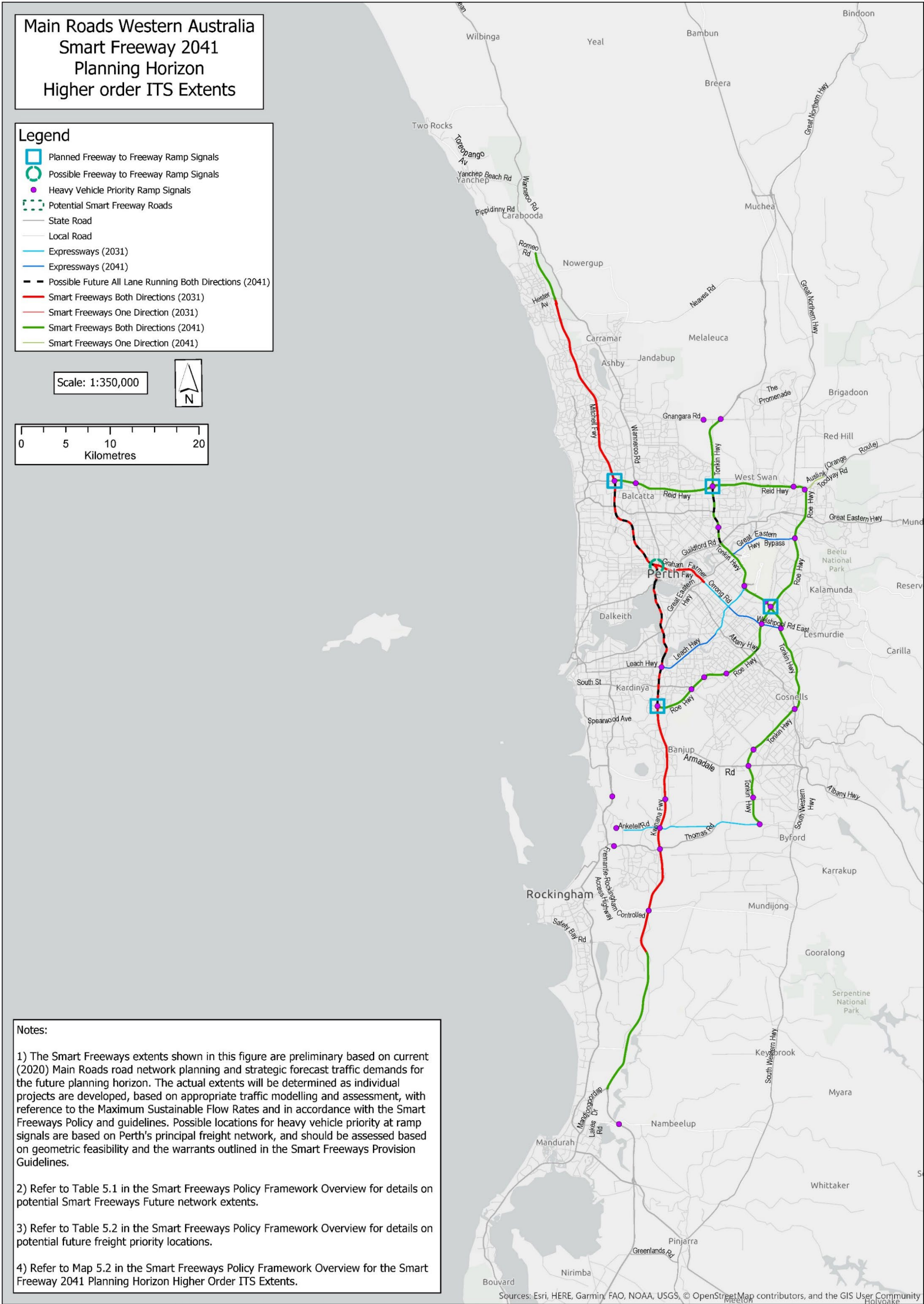
Smart Freeways treatments are applicable to the three work types as outlined in Section 3.2. The following projects shall receive specific focus in improvement programs:

- **Current projects on the freeway network**, where detailed design has commenced. For these projects incorporation of design standards for implementation of Smart Freeways in the future shall be considered. This might involve contract variations or additional funding, and therefore should be assessed carefully.
- **Programmed projects on the freeway network**, where detailed design has not yet commenced. Smart Freeways technologies shall be integrated in the scope of these projects according to needs defined in the Provision Guidelines. As a minimum this includes the provision of design standards for future implementation of Smart Freeways. Additionally, inclusion of Smart Freeways technologies to improve the (future) network performance should be considered.
- **Congested sections of the freeway network**, where a current or future problem has been identified with regard to demand and congestion management, but that are not yet on the list to be upgraded. An assessment of the network performance shall be performed to identify the benefits of Smart Freeways technologies, without the need for civil upgrades. If the benefits acknowledged reflect a positive impact of Smart Freeways on the network performance of the road section, a separate Smart Freeways project can be initiated.

All current and programmed civil road projects on the freeway network shall be designed to facilitate the implementation of Smart Freeways when required, for example at opening or an acceptable future time (e.g. ten years). Even though Smart Freeways technologies may not be applied initially, all future freeways will, as a minimum, have real-time network monitoring capability and intelligence, and provision for higher order Smart Freeway treatments when needed. This should ensure a cost-effective retrofit at a later time. The minimum Smart Freeways design requirements to be considered for current, programmed and new freeway projects are described in Main Roads' Smart Freeways Provision Guidelines document.

This page has been intentionally left blank





This page has been intentionally left blank

5.3 Performance-based design

A performance-based design process creates challenges and a need to develop a range of technical capability across disciplines to ensure sound decision making. This requires a specific design intent that will optimise the completed project's performance outcomes.

The range of stakeholder views applied to freeway projects has created a need for design concepts to be part of inter-disciplinary design practice. These concepts include:

- A focus on creating roadways and related infrastructure that provide safe travel for all users.
- Context sensitive design and solutions that place priority on assuring that highway projects fit the context of the area through which they pass. This means balancing project needs as well as the values of the highway authority and community in decision making.
- A design process that considers explicit consideration of performance measures, typically operational and safety performance measures.
- Practical design that focuses on needed improvements and removing of improvements that are not essential, thereby managing the overall cost of a project.
- Safe system design that takes a holistic approach, with the responsibility for road safety being shared between all aspects of the transportation system, i.e. roadway infrastructure, road users, travel speeds and vehicle safety.
- Designing a roadway to focus on and maximize the travel time reliability of the operations.
- Value engineering as a systematic process of project review by a multi-disciplinary team to provide recommendations for improving a project's value, quality and performance.
- Consideration of all road users as applicable.
- Consideration for future / ultimate design.

These differing concepts recognise the need to consider competing priorities and viewpoints in the design of a project, and hence consider and balance all competing stakeholder goals and interests.

The Main Roads' Smart Freeways policy and guideline documents aim to highlight road safety and operational principles which both require a high priority during design. Therefore, the design intent shall be to produce a Smart Freeway and ITS design that will maximise the completed project's performance outcomes, i.e. Smart Freeway design is not just about ITS devices but a freeway that works to optimise safety and efficient traffic operations.

The design principles that contribute to achieving safety and operational outcomes are provided in Victoria's Managed Motorway Design Guide (MMDG). Main Roads' Supplement to the MMDG Volume 2 Parts 2 and 3 includes guidance relating to design intent and Smart Freeway project design performance targets (see Part 3 Section 1.5).

The safety outcomes and other benefits that can be achieved from a well-designed and managed freeway are documented in Victoria's MMDG Volume 2: Part 2 Section 6.

5.4 Consideration of freight movement and efficiency

The efficient movement of freight will contribute to the state's productivity. Therefore, trucks may be given specific consideration and priority using a dedicated priority lane at ramp signals.

Where this can be accommodated in design, the freight access advantage is provided with a shorter queue relative to other traffic. Table 5.2 provides a guide to locations where a priority advantage for freight vehicles should be considered. Other ramps may also be considered where there is a high volume of trucks and a separate lane can be accommodated in the design.

Table 5.2: Potential future freight priority locations

Smart Freeway Network	Freight Route Connection	Potential Heavy Vehicle Priority for Entry Ramps
Kwinana Freeway	Leach Highway	Southbound ramp only
	Roe Highway	Southbound ramp only
	Rowley Road	Both directions
	Anketell Road	Both directions
	Thomas Road	Both directions
	Mundijong Road / FRCAH	Both directions
	Lakes Road	Northbound ramp only
Mitchell Freeway	Reid Highway	Both directions (from Reid Highway westbound only)
Reid Highway	Mitchell Freeway	Eastbound ramp only
	Wanneroo Road	Both directions
	Tonkin Highway	Both directions
	Great Northern Highway	Both directions
Roe Highway	Toodyay Road (future Perth-Adelaide National Highway)	Both directions
	Great Eastern Highway Bypass	Both directions
	Tonkin Highway	Both directions
	Welshpool Road East / Orrong Road	Both directions
	Nicholson Road	Both directions
	Willeri Drive	Both directions
	South Street	Both directions
	Kwinana Freeway	Eastbound ramp only
Tonkin Highway	Reid Highway	Both directions
	Collier Road	Both directions
	Leach Highway	Both directions (from Leach Highway eastbound only)
	Abernethy Road	Southbound ramp only
	Roe Highway	Both directions
	Welshpool Road East	Both directions
	Albany Highway	Both directions
	Ranford Road	Both directions

Smart Freeway Network	Freight Route Connection	Potential Heavy Vehicle Priority for Entry Ramps
	Armadale Road	Both directions
	Rowley Road	Both directions
	Thomas Road	Northbound ramp only
Fremantle Rockingham Control of Access Highway	Leach Highway	Southbound ramp only
	Rowley Road	Both directions
	Anketell Road	Both directions
	Thomas Road	Both directions
	Kwinana Freeway	Northbound ramp only
	Gnangara Road	Southbound ramp only

5.5 Consideration of freeway-to-freeway ramps

As part of a coordinated system to manage and control mainline traffic, the provision of ramp signals on freeway-to-freeway ramps is generally required to minimise downstream potential for flow breakdown (see Smart Freeways Provision Guidelines).

Depending on the nature of the interchange, different design approaches may be appropriate as outlined in Victoria's Managed Motorway Design Guide: Volume 2 Part 3, Chapter 7 (2019). Where freeway-to-freeway ramp signals are provided they would only operate when needed, and uninterrupted free-flow entry would be available at other times.

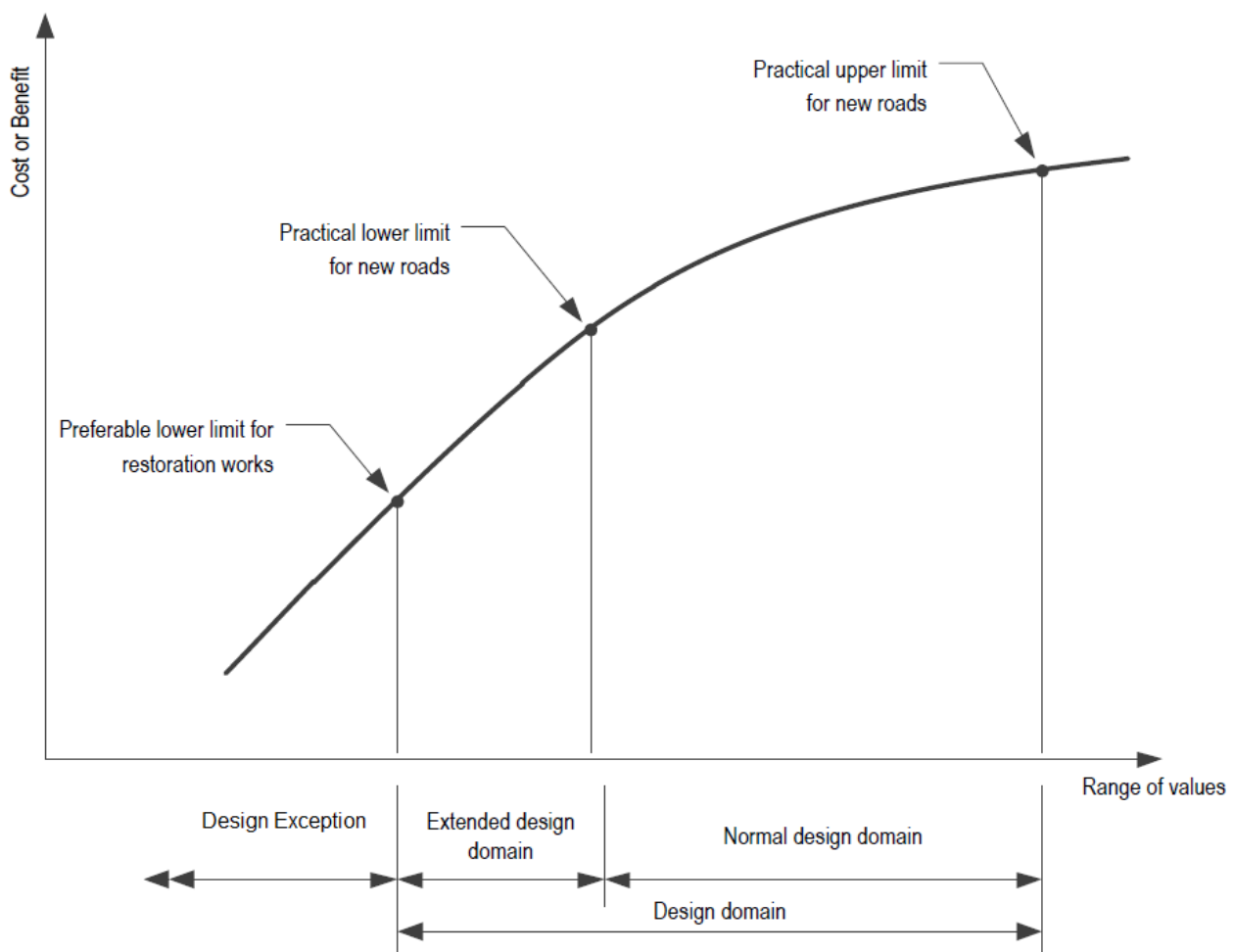
Table 5.3 provides a guide to locations where freeway-to-freeway ramp signals should be considered. This shall also be considered as part of mainline volume / capacity route analysis based on design flows and maximum sustainable flow rates (MSFR) along the route being managed, in accordance with Victoria's MMDG Volume 2 Part 3, Sections 4.3 and 4.4.

Table 5.3: Potential freeway-to-freeway ramp signal locations

Freeway-to-Freeway Interchange	Entry Ramps to be Controlled
Fremantle Rockingham Control of Access Highway / Kwinana Freeway	North, South and West approaches
Roe Highway / Kwinana Freeway	All
Roe Highway / Tonkin Highway	All
Tonkin Highway / Reid Highway	All
Reid Highway / Mitchell Freeway	North, South and East approaches
Whiteman Yanchep Highway / NorthLink	Southbound direction only

5.6 Departures from design standards

Design domain can be thought of as a range of values that a design parameter might take. It is a range of design parameters that can be justified in an engineering sense (based on test data, sound reasoning, etc.) and therefore can have a reasonable level of defence if questioned. The design domain approach places emphasis on developing appropriate and cost-effective designs rather than providing a design that simply meets 'standards'. Figure 5- illustrates the concept that requires a designer to select a value for each design element from a range of values, considering the benefits and costs of each selection.



Notes:

- The value limits for a particular criterion define the absolute range of values that it may be assigned.
- The design domain for a particular criterion is the range of values, within these limits, that may practically be assigned to that criterion.

Figure 5-3 The Design Domain Concept Source: Based on Austroads (2015)

Figure 5- shows that the design domain comprises a normal design domain (NDD) and an extended design domain (EDD). Within the context of geometric road design, the lower regions of the design domain represent values that would generally be considered less safe or less efficient, but usually less expensive than those in the upper regions of the domain. The decision on the values to adopt shall be made using objective data on the changes in cost, safety and levels of service caused by changes in the design, together with benefit-cost analysis.

Such data is not always available, particularly data that relates to changes in the values associated with specific design elements and parameters to safety performance. Designers shall therefore refer to relevant documents, including the Austroads Guide to Road Design series of documents and research reports, to assess the potential effects of changes in values for the various design elements involved. The data chosen should also consider the importance of incorporating Safe System principles in the design.

Using this concept provides the following benefits to the designer:

- It is more directly related to the road design process, placing a greater emphasis on developing appropriate and cost-effective designs rather than merely following prescriptive standards.
- It reflects the continuous nature of the relationship between changes in the design dimensions and service, cost and safety, as the designer must consider the impacts of trade-offs throughout the domain and not just where a standard threshold is crossed.
- It provides an implied link to the 'factor of safety', a concept commonly used in civil engineering design processes where risk and safety are important.

A *design exception* (DE) is a design that adopts values outside the design domain (that is, outside both the NDD and the EDD) and includes innovative technology or treatments through "Pilot Projects" or "Trials" because the performance of the technology or treatment in WA may be largely unknown. They are unlikely to provide reasonable road-user capability, unless the treatment or technology has been satisfactorily demonstrated elsewhere. (Reasonable road-user capability is the capability a court of law decides a road user should reasonably expect to have when they are taking reasonable care for their own safety.) The EDD offers some latitude in road design and, in many cases, road-user capability will still be adequate with a design that incorporates EDD criteria. However, when a design incorporates a DE, road-user capability is largely unknown. A high level of technical judgement is needed to inform and review the design.

5.6.1 Smart Freeways types of departures from standards

The design standards and guidelines applicable to Smart Freeways contribute to ensuring operational safety for road users as well as an ability to achieve optimum traffic performance. Therefore, departures from the Smart Freeways standards, guidelines, or principles forming the basis of operations, must be formally approved by Main Roads after due consideration of all constraints, criteria and risks.

Within the context of Smart Freeways, design departures can be considered under three categories:

- Normal Design Domain (NDD) – design parameters that are considered practical lower limits, or 'absolute minimums,' and are typically discussed in the body of the Main Roads guideline documents. This includes 'special cases,' i.e. design layouts or parameters that are not Main Road's preferred position, but may respond to specific constraints such as retrofit situations. These designs and parameters are identified in the guidelines documents as requiring approval in accordance with this document.
- Extended Design Domain (EDD) – as defined in the "*Guidelines for the Extended Design Domain & Design Exception Process*," these are design parameters that are either outside the requirements of the NDD or have not been considered in the Main Roads guidelines, but where other national or international guidance and research reports are available that provide data and justification that can have a reasonable level of defence if questioned. These parameters represent values that would generally aim to balance designs within various constraints, including safety, efficiency or other parameters, but also result in more economical designs. The decision on the values to adopt shall be made using objective data on the changes in cost, safety and operational outcomes caused by changes in the design, and should be supported by a risk analysis as well as the provision of mitigating measures. Use of EDD should also preferably be supported with a benefit-cost analysis.

- Design Exceptions (DE) – as defined in the “Guidelines for the Extended Design Domain & Design Exception Process,” these are design parameters that are not contemplated in the Main Roads guidelines, and for which there is limited national or international data or research available to justify their use. A high level of technical judgement is needed to inform and review the design, and any use of such values must be formally approved by the relevant Executive Director in Main Roads after due consideration of all constraints, criteria and risks.
- Design Exceptions also include the trial of a new technology or a pilot project to test a new system. From this point of view, a DE does not meet the description of a design parameter falling outside of the NDD and EDD values as indicated in Figure 5-. It makes sense therefore to differentiate between a DE using a value outside of EDD and NDD values and a DE using a technology new to WA. This type of DE is termed a Technology Design Exception.
- Technology Design Exception (TDE) – a design that adopts a specific technology, device or concept of operations that has not been considered in the Main Roads guidelines, but where other national or international guidance and research reports are available that provide data and justification that can have a reasonable level of defence if questioned. The use of this technology or concept of operations would generally aim to achieve a more economical solution while still meeting the objectives of the project and the minimum performance, safety and operational requirements of Main Roads.

5.6.2 Approval process

The approval process shall apply to all design departures from the Smart Freeways Policy Framework Overview, Provision Guidelines and/or design guideline documents. Design departure approvals shall be managed under Main Roads’ Delegation of Authority with respect to “designs varying from Main Roads’ standards”.

Any changes to design parameters can have a fundamental impact on the performance of two facets of freeway operations, namely *safety* or *operational efficiency*. Arguably, any changes will have an impact on both, but in many cases, the prime impact will be on either safety or operational efficiency.

Approvals for design departures that impact primarily on road safety shall be given by the Executive Director Planning and Technical Services (EDPTS) using the current process detailed in the document “*Guidelines for the Extended Design Domain & Design Exception Process*” (the EDD & DE Guidelines). Most of the seventeen controlling criteria identified in Section 5.2 of the EDD & DE Guidelines as critical for design purposes in WA, are applicable to the geometric design of Smart Freeways. Any proposed departures from Main Roads’ standards with respect to these controlling criteria requires a review by the Manager Road and Traffic Engineering (MRTE) and approval by the EDPTS.

The Director Congestion and Movement Strategy (DCMS) or the Director Realtime and ITS Operations (DRIO) or the Executive Director Network Operations (EDNO), as applicable, shall give approvals for design departures that impact primarily on operational matters.

The EDPTS and the EDNO shall give approvals for design departures that affect both road safety and operational matters, where applicable.

The minimum level of approval for specific matters is identified in Table 5.4.

5.6.3 Documentation required

Departures from the guidance in the Smart Freeway documents must be formally documented in a report, or reports, and signed-off as part of an auditable process. When reporting on departures and available options, an increase in project scope and/or cost to improve the project design and/or outcomes may be a valid recommendation. The report documenting the proposed departure must cover the following items:

NDD, EDD and DE parameters for any of the 17 controlling criteria identified in the EDD & DE Guidelines

- Documentation shall be as per the document *"Guidelines for the Extended Design Domain & Design Exception Process"*.

NDD for parameters that are not part of the 17 controlling criteria identified in the EDD & DE Guidelines

- Justification and recommendation for the adopted design / operational concept
- Confirmation of the review and approval process that has been undertaken

EDD, TDE and DE for parameters that are not part of the 17 controlling criteria identified in the EDD & DE Guidelines

Items listed for NDD departures above, as well as:

- Risk assessment of the adopted design / operational concept
- Demonstration that the adoption of a standard design or operational concept (in accordance with the Smart Freeways documents) is not practical or possible because of physical, environmental, heritage, social or economic constraints
- Demonstration that the adoption of EDD, TDE or ED is in the overall community interest with respect to investment strategies, road safety strategies, and other strategies that relate to freeway networks
- Demonstration that the use of mitigation measures to offset potential safety or operational risks
- If a change of project scope or budget is recommended, a revised benefit-cost analysis
- Verification that responsibility for the use of EDD, TDE or ED is taken corporately by Main Roads and is not placed on an individual designer or other organisation

5.6.4 Matters requiring consideration

Due to the high cost of the freeway infrastructure, the important role of freeways in the arterial road network and the critical nature of design decisions, the design departure items listed in Table 5.4 shall receive the minimum level of approval as identified in the table.

All geometric design exceptions and departures shall be forwarded to MRTE and EDPTS for review and approval as per Extended Design Departure Guidelines.

All extended design departures and design exceptions impacting operational and performance of the network shall be reviewed, recommended and approved as per Table 5.4.

Network Operations Planning Manager and Manager Road Traffic Engineering should inform each directorate of any exclusive approvals that are being considered and issued.

The following abbreviations are used in Table 5.4:

- DCMS – Director Congestion and Movement Strategy
- DRIO – Director Realtime and ITS Operations
- EDNO – Executive Director Network Operations
- EDPTS – Executive Director Planning and Technical Services
- MITSO – Manager ITS Operations
- MTRNP – Manager Traffic and Network Performance
- MRTE – Manager Road and Traffic Engineering
- MRTTO – Manager Real Time Traffic Operations, and
- NPDM - Network Planning and Development Manager
- NOPM – Network Operations Planning Manager

Table 5.4: Approval requirements for matters considered as Design Departures

Subject	Design Departure	Design Departure Category	Review by each of	Recommended by	Approve by	Reference
ITS technologies						
Foundation level ITS	Freeway that does not include at least foundation level ITS requirements.	TDE	MITSO MRTTO MTRNP	DCMS	DRIO	Provision Guidelines Section 5.1
Higher order ITS	Freeway meeting higher order ITS warrants but does not include CRS	TDE	MITSO MRTTO MTRNP NPDM ¹	DCMS DRIO	EDNO ¹	Provision Guidelines Section 5.2
Provision of LUMS	All departures from Provision Guidelines	TDE	MITSO MRTTO MRTE ¹	DCMS DRIO	EDNO ¹	Provision Guidelines Section 6.5
All lane running	All lane running without LUMS (for extensive lengths not considered within the Provision Guidelines)	TDE	MITSO MRTTO MRTE ¹	DCMS DRIO	EDNO ¹	Provision Guidelines sections 5.2 and 6.5
Mainline variable speed limits	Installation of VSL that is not part of LUMS where LUMS is otherwise warranted. Installation of VSL in situation not considered in the Provision Guidelines.	TDE	MITSO MRTTO MRTE ¹	DCMS DRIO	EDNO ¹	Provision Guidelines sections 6.4 and 6.5

Subject	Design Departure	Design Departure Category	Review by each of	Recommended by	Approve by	Reference
Mainline VDS spacing	Freeways requiring higher order ITS: all departures from location design guidance. Freeways with foundation level ITS: all departures from Provision Guidelines location requirements.	TDE	MITSO MRTTO MTRNP		DCMS	MMDG Vol 2 Part 3 Section 5
Trial of new ITS technology not identified in the Provision Guidelines	All trials or pilot studies	TDE	MITSO MRTTO MRTE ¹	DRIO DCMS	EDNO ¹	
Mainline design						
Peak hour design volumes from 24-hour models	8.5% ≤ K-factors ≤ 9% (Note 9% < K-factors ≤ 10% are within NDD) K-factors > 10% for freeways and 12% for individual turning movements.	EDD			MRTE	MMDG Vol 2 Part 3 Section 3.3.4.3.3. Main Roads' supplements to MMDG Vol 2 Part 3 Section 3.3.4.3.3
	K-factor < 8.5%	EDD	MRTE ¹ MTRNP NPDM ¹		DCMS	
Mainline lanes design volume / MSFR analysis for any freeway section	Volume / MSFR ratio > 1.0 and < 1.1 (100% to 110%) for proposed level of management.	EDD	MRTE ¹ MTRNP NPDM ¹		DCMS	MMDG Vol 2 Part 3 Section 4.4, and particularly sections 4.4.2 and 4.4.7
	Volume /MSFR ratio > 1.1 (110%) for proposed level of management. Proposals for demand management.	EDD	MRTE ¹ MTRNP NPDM1	DCMS	EDNO ¹	

Subject	Design Departure	Design Departure Category	Review by each of	Recommended by	Approve by	Reference
Emergency stopping bays and/or Roadside Help Phones	All departures from design guidelines (freeways requiring higher order or foundation level ITS, as appropriate. For All Lane Running (ALR) projects, spacing >800m.)	EDD	MRTE ¹ MRTTO	DRIO	EDNO ¹	Provision Guidelines Section 5.2 and 8.4. Guideline: Emergency Stopping Bays and Roadside Help Phones Section 3.
Mainline special use lanes	All proposals for priority vehicle lanes	DE	MRTE ¹ MTRNP MRTTO	DRIO DCMS	EDNO ¹	Provision Guidelines Section 6.2.3
Ramp signals design						
Design life	Design Life < 10 years.	EDD	MRTE ¹ MTRNP MRTTO	DCMS NPDM ¹	EDNO ¹	Provision Guidelines Section 4.1.2
Number or extent of controlled ramps	Design volume > MSFR capacity in the managed section of freeway. Design volume > MSFR capacity in the unmanaged sections of freeway (upstream or downstream).	EDD	MRTE ¹ MTRNP NPDM		DCMS	MMDG Vol 2 Part 3 Section 4 - particularly sections 4.3.2.7 and 4.3.2.8
	Uncontrolled ramps in managed sections. Volume > capacity in the Partially Managed Transition Zone.	EDD	MRTE ¹ MTRNP MRTTO		DCMS	
Priority access lanes	Provision of priority access lanes that compromise discharge capacity or storage for general traffic.	EDD	MRTE ¹ MTRNP MRTTO		DCMS	MMDG Vol 2 Part 3 Section 6.8.1, 6.8.3 and Appendix A Main Roads' supplements to MMDG Vol 2 Part 3 Section 6.8
	Metered priority lane: Option 2.	NDD	MRTE ¹ MTRNP MRTTO		DCMS	

Subject	Design Departure	Design Departure Category	Review by each of	Recommended by	Approve by	Reference
Ramp Discharge Capacity: i.e. number of Stop Line lanes	Cycle times less than the desirable 7.5 sec. or 6.5 sec. as applicable, i.e. orange figures in the MMDG table.	EDD	MTRNP MRTTO		DCMS	MMDG Vol 2 Part 3 Section 6.2 and Table 6.1
	Cycle times less than the limits in the referenced MMDG table.	DE	MRTE ¹ MTRNP MRTTO	DCMS	EDNO ¹	
Ramp storage: desirable minimum 4-minutes	3 to 4 minutes. Compensating proposals for storage inadequacy.	NDD	MRTE ¹ MTRNP		DCMS	MMDG Vol 2 Part 3 Section 6.3, Table 6.1 and Section 6.3.2.
	Below 3 minutes, including compensating proposals for storage inadequacy. Designs requiring storage on the arterial road.	DE	MRTE ¹ MTRNP	DCMS	EDNO ¹	
Ramps with very high volumes (2,500 veh/h or more)	Designs requiring more than 1 veh/green/lane. Layouts not included in Main Roads' Typical Drawings.	DE	MRTE ¹ MTRNP MRTTO	DRIO DCMS	EDNO ¹	MMDG Vol 2 Part 3 Section 6.2.1, 6.3.2 and Table 6.1
2-metered lanes freeway ramp signals layout, merging to a single lane at nose	Use of 80m distance between the stop line and the nose, in retrofit situations where ramp storage is an issue	NDD			MRTE	Main Roads' supplements to MMDG Vol 2 Part 3 Section 6.5
3-metered lanes freeway ramp signals layout, merging to a single lane at nose	Use of special case layout with staggered stop-line Use of special case layout with extended third lane and overhead LUMS sign (Dwg 201731-0028)	NDD			MRTE	MMDG Vol 2 Part 3 Section 6.6, Figure A-1 in Appendix A Main Roads' supplement to MMDG Vol 2 Part 3 Section 6.6, Figure 3

Subject	Design Departure	Design Departure Category	Review by each of	Recommended by	Approve by	Reference
Freeway-to-freeway ramps	Designs for ramp signals not covered by Main Roads' supplement to MMDG (e.g. more than four lanes at the stop line) Proposals for ramps without ramp signals.	DE	MRTE ¹ MTRNP MRTTO	DRIO DCMS	EDNO ¹	MMDG Vol 2 Part 3 Section 7 Main Roads' supplement to MMDG Vol 2 Part 3 Section 7
Other matters not included above						
	Any other design aspect where design is inconsistent with the Main Roads' Smart Freeway documents.	DE	refer below ²		refer below ²	

- 1 EDPTS shall be consulted by EDNO in all cases involving design departures where the design departure is likely to impact on road geometry, road safety or strategic (long term planning). MRTE or NPDM shall advise when this should occur.
- 2
 - Primarily geometric and safety impacts – review by MRTE, approval by EDPTS
 - Primarily operational impacts – Contact Network Operations Planning Manager (NOPM)
 - Both operational and safety impacts – contact MRTE and NOPM.

5.7 Performance-based maintenance management

As indicated in Section 4.4 a commitment to ongoing operational and asset management is essential for achieving Smart Freeways benefits, e.g. fast and timely maintenance of vehicle sensors will contribute to achieving the safety and operational benefits of Smart Freeway operations.

Smart Freeway technologies generally require faster maintenance response times, which may have implications for existing maintenance contracts. Therefore, the monitoring, service and maintenance arrangements shall incorporate targets and intervention levels that are aligned with the importance of the technology components for delivering the end-user operation and benefits.

The funding for Smart Freeways shall consider the whole-of-life costs of ITS technologies as well as make provision for recurrent costs for ongoing operations and maintenance, including the relatively short life span of ITS assets and needs for asset renewal or replacement.

6 Performance-based operations

6.1 Context

While performance-based design can optimise a completed project's performance outcomes, these can only be achieved with sound operating principles for Smart Freeways, and particularly with management of the mainline with coordinated ramp signals.

While the project design needs to reflect best practice and opportunities for successful operations, the principles and rationale for operations are equally important. For example, a design with inappropriate compromises during the design process will result in a project that is problematic for effective operations. Similarly, a good design may not perform satisfactorily unless sound operational strategies and principles are implemented by system operators to optimise operations.

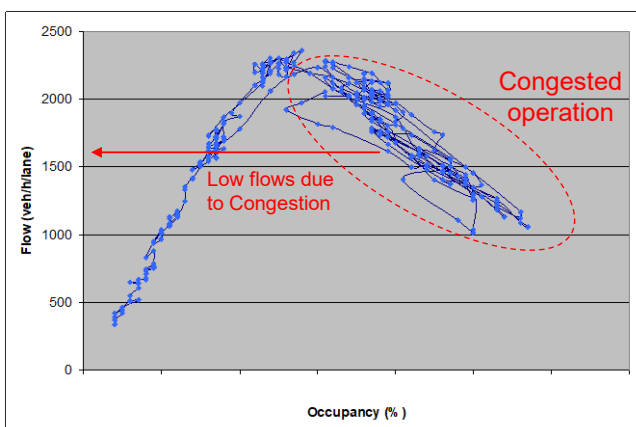
6.2 Mainline and system management concepts

The freeway ramp signalling system controls the discharge flows from entry ramps in order to:

- Protect the mainline operation by keeping flows within critical occupancy (density)
- Manage multiple bottlenecks occurring along on the freeway (not just at each ramp merge)
- Assist with recovery of flow to stable conditions if breakdown starts to occur
- Respond to traffic conditions caused by incidents, including management of traffic demand
- Protect arterial roads within the constraints of the available and shared ramp storages.

Unmanaged freeways with high traffic demand generally experience flow breakdown as shown in Figure 6-1.

Smart Freeways use coordinated ramp signals to manage the mainline and control traffic demand within the freeway's capacity. This can generally prevent or minimise flow breakdown as shown in Figure 6-2. Optimum operation to minimise flow breakdown aims to keep flow at a target occupancy in the stable range, i.e. just less than the optimum theoretical capacity where traffic flow is unstable. This target operation (typically in the order of 90 to 95 per cent of measured capacity) optimises productivity (flow and speed) as well as road user safety.



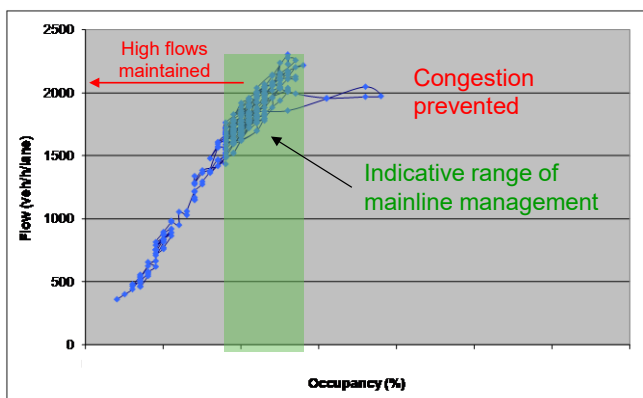
Flow breakdown results in:

- Worsening safety performance
- Congestion
- Reduced throughput
- Reduced speed
- Lost productivity

Source: Victoria's MMDG Volume 2 Part 2, Figure 2-5

Note: Horizontal axis values are not shown as occupancy varies according to VDS sensor type and bottleneck capacity.

Figure 6-1. Unmanaged Freeway Performance with Flow Breakdown



Smart Freeway management results in:

- Prevention / delay of flow breakdown
- Safer operation
- Improved productivity (optimised throughput and travel speed)
- Improved reliability

Source: Victoria's MMDG Volume 2 Part 2, Figure 2-5

Note: Horizontal axis numerical values are not shown to avoid confusion. Occupancy varies according to VDS sensor type and bottleneck capacity.

Figure 6-2. Smart Freeway Performance with Managed Flow

6.3 Ramp signals operational principles

6.3.1 Usual operations

The usual operation of ramp signals is automated with dynamic and coordinated operation. This includes a sound basis for mainline and ramps system parameter values, together with regular analysis to optimise operations. An overview of ramp signals operation and the control algorithms used by Main Roads are in Victoria's Managed Motorway Design Guide Volume 2: Part 2: Managed Motorway Network Optimisation Tools.

Operations shall be guided by the following priorities and principles:

1. Provide settings to ensure the ramp signals only switch on when necessary and then switch off when no longer needed.
2. Avoid potential for mainline flow breakdown as this optimises safety and productivity.
3. Manage entry ramp queues in a coordinated manner with traffic demand management and balancing of queues between ramps, i.e. 'share the load.' Automated system flow parameter settings for queue management (queue control and queue override) should avoid potential for mainline flow breakdown.
4. Provide equity of access from entry ramps with appropriate waiting times (may be different for different ramps). Automated system flow parameter settings for waiting time on the ramp should avoid potential for mainline flow breakdown.
5. Protect the operation of arterial roads with the effective management of all storage areas. This includes all entry ramps, and may also include the use of space on the arterial road, if necessary, to maintain operation according to the higher-level priority principles. Section 6.3.2 provides principles relating to entry ramps with excessive demand.

6.3.2 Excessive entry ramp demand

Traffic demand that creates operational challenges in managing the mainline effectively may occur for a number of reasons, including:

- A freeway and/or ramps not being designed to meet traffic demand.

- A well-designed freeway but where there are short-term traffic demands which are higher than the design volumes.

As traffic demand increases, the policy for control of ramps and optimisation using coordinated ramp signals include the following principles, particularly where consideration is being given to actions that will lead to mainline flow breakdown. These principles recognise the economic importance of freeways in the road network and the cost implications of increased delay due to congestion for high traffic volumes using the freeway. These principles are very important for high flow ramps, and particularly for freeway-to-freeway ramps.

- Manage entry ramps to prevent flow breakdown on the mainline. This would take priority over the extent of queuing on the controlled entry ramps.
- Minimise ramp queues that extend back to interfere with through traffic on the arterial roads. In the case of arterial road ramps, queuing into an exclusive turning lane or into one lane of a three-lane carriageway is generally acceptable. Beyond this point, the coordinated ramp signal system would act to severely restrict all ramp entry flows in order to maintain stability of the mainline.
- Where consideration is being given to operational strategies or ramp management actions that would increase the potential for, or cause, flow breakdown of the mainline, this shall only be implemented after analysis of traffic flow implications for the mainline, ramps and arterial roads, as appropriate. This analysis may include safety and economic analyses, e.g. cost of delay with, and without, flow breakdown, access delays, likelihood of crashes in stable and unstable/congested flow, etc., and other factors that may be relevant.
- Entry ramps may need to be closed during an incident or to recover flow after an incident.
- For freeway-to-freeway ramps:
 - For safety and traffic flow reasons, avoid queues at controlled freeway-to-freeway ramps from extending back to interfere with traffic on the upstream freeway through lanes, or other traffic movements within the interchange, e.g. a branched ramp.
 - Ramp signals may be operated with lower delays (waiting time) in recognition of their role in the freeway network, provided this does not compromise overall mainline control downstream. This may include lower wait-time thresholds compared to entry ramps from arterial roads, e.g. if 4 minutes is a target waiting time at ramps from arterial roads, 3.5 minutes may be an option at a freeway-to-freeway ramp.

6.3.3 Heavy congestion management

An integrated approach is needed when managing heavy congestion including the use of ramp signals to manage demand, traffic diversion by providing real-time traveller information, use of existing traffic signals to facilitate appropriate traffic diversions, support for the ramp signal operations and other incident management strategies. Victoria's Managed Motorway Design Guide Volume 2: Part 2 (sections 3.6 to 3.9) provides a summary of the benefits of freeway management during incidents and heavy congestion.

Freeway management during an incident or heavy congestion and to facilitate flow recovery, would benefit from additional strategies which could be employed outside of the normal ramp signalling algorithm operation. Special traveller information messages of 'Major Delays' and 'Seek Alt Route' would also be used (see Guidelines for Variable Message Signs).

The ramp signalling intervention would restrict the ramp flows to values lower than normal operation, e.g. with cycle times up to 20 seconds. While this would cause longer ramp queues, the modified operation would reduce the extent of worsening congestion and facilitate faster recovery from congestion. While not automated at this stage, the adjustments to over-ride the ramp signal algorithms could be based on the ratio of estimated travel time to nominal travel time. Road user acceptance of this future potential management strategy would need to be monitored.

Additional strategies to integrate the operation of adjacent traffic signals in response to an incident or heavy congestion should be considered to support the operation of the freeway. The following alternative traffic signal operation strategies (methods) may be used for managing of heavy congestion along a route, which is not related to an incident.

- Method 1: Modifying traffic signals operation to restrict (gating) flow along the feeder arterials to support the operation of the ramp signals. Restricting the flow onto the ramp may enable sustaining the ability to continue to effectively utilise the ramp signal algorithm. That is, the reduced arrival flow would allow the ramp signal algorithm to continue to support freeway management without a reduction in capacity along the arterial route due to the ramp queue otherwise exceeding the available storage. In this scenario, the additional cumulative delay due to gating on the arterials must be less than the delays that would be experienced had the ramp queue overspilled and reduced the arterial road capacity.
- Method 2: Facilitating more efficient travel times along the arterial route to encourage an alternative route choice to the freeway. If restricting the arrival flow to the on-ramp (Method 1) provides little to no benefit to the ramp signal's ability to effectively manage the freeway and is ineffective at mitigating ramp queue overspill, this operating method should be considered. By operating the traffic signals with an induced improvement in travel times along the arterial route, a change in driver route choice is encouraged. This will allow better network utilisation and minimising delays for the wider road network.

For incidents that have significant impact on the freeway, the detours require vehicles to start exiting at the earliest available off-ramp. This requires timely advice to road users on the freeway using freeway VMS – generally over a relatively long distance (see the Guidelines for Variable Message Signs, and particularly Table 2.3). As freeway volumes are generally significant (i.e. greater than the capacity of a single exit ramp and the intersecting arterial road at that point), 'unloading' of the freeway will generally need to use a number of interchanges for 'wide area network dispersion' (WAND as referred to in Victoria's design guides). Due to the certainty of the required interventions with predefined response plans (if the scenario is predicted), traffic signal modifications can be developed for more efficient and effective intervention across the road network.

6.3.4 Extra-ordinary circumstances

During extra-ordinary circumstances the signals may be switched off, or switched on, according to the situation. Some extra-ordinary circumstances may include, but are not limited to:

- If emergency vehicle freeway access is needed, the ramp signals may be manually switched off to clear a queue and hence avoid any potential delay to the emergency vehicle. This may be needed for an incident on the freeway, or when an emergency vehicle is needing access to the freeway for travel to an incident elsewhere on the road network. Communication protocols shall be established with the ambulance service, fire brigade and police to facilitate this operation.

- When there is an incident on the freeway the ramp signals may be switched off and the ramp closed. In this case regulatory control over the freeway access is provided by the 'No Right Turn' and 'No Left Turn' signs at the interchange ramp entrance, supported by a 'Freeway Closed' message.
- During maintenance or construction downstream of a ramp, ramp signals may be beneficial in managing vehicle headways (may not be needed to manage mainline flow or occupancy).

7 References

Austrroads 2007, National Performance Indicators for Network Operations, by R Troutbeck., M Su and J Luk, AP-R305/07, Austrroads, Sydney, NSW.

Infrastructure Australia, Urban Transport Crowding and Congestion (Australian Infrastructure Audit 2019- Supplementary report

.

Bureau of Infrastructure, Transport and Regional Economics (BITRE) 2015, Traffic and congestion cost trends for Australian capital cities, Information Sheet No 74, BITRE, Canberra ACT

Brilon, W, Geistefeldt, J 2009, Implications of the random capacity concept for freeways, 2nd International symposium on freeway and tollway operations.

Department of Planning Lands and Heritage 2018, Perth and Peel@3.5million, Department of Planning, Lands and Heritage, Perth, WA.

Department of Planning Lands and Heritage 2019, WA Tomorrow Population Report No. 11, Department of Planning, Lands and Heritage, Perth, WA.

Department of Transport, Metro freight network strategy, Department of Transport, Perth, WA.

Federal Highway Administration 2009, Systems engineering guidebook for Intelligent Transport Systems, version 3.0, Department of Transportation, Federal Highway Administration (FHWA), California Division, California, USA.

Infrastructure Australia 2019, Infrastructure Priority List, Infrastructure Australia, Canberra, ACT.

VicRoads 2017, Managed Motorways Framework, Network Optimisation and Operations Rationale and Technical Requirements, VicRoads, Kew, Vic.

VicRoads 2019, Managed Motorway Design Guide Volume 1: Role, Traffic Theory and Science for Optimisation, Part 3: Motorway Capacity Guide, VicRoads, Kew, Vic.

VicRoads 2019, Managed Motorway Design Guide Volume 2: Design Practice, Part 2: Managed Motorway – Network Optimisation Tools, VicRoads, Kew, Vic.

VicRoads 2019, Managed Motorway Design Guide Volume 2: Design Practice, Part 3: Motorway Planning and Design, VicRoads, Kew, Vic.

VicRoads 2013, Managed Freeways Handbook for Lane Use Management, Variable Speed Limits and Traveller Information, VicRoads, Kew, Vic.

Western Australian Planning Commission 2010, Directions 2031 and beyond, Department of Planning and Western Australian Planning Commission, Perth, WA.

Appendix A Definitions

Central control system Management system and user interface for the operation of all ITS field equipment and systems in Western Australia, operable via the Road Network Operations Centre (RNOC).

Efficiency In terms of travel speeds. This refers to the definition of efficiency used in the Austroads National performance Indicators for network operations (Austroads 2007). Efficiency indicators include travel speeds (i.e. spot speeds on freeways) and variation from posted speed limits.

Intelligent Transport Systems (ITS) Integrated application of communications, control and information processing technologies to the transport system, to monitor and manage traffic flow performance.

Smart Freeways Making best use of the existing freeway network, through the controlled use of technology and operational strategies enabling real-time network management led by an informed road operator.

Smart Freeway technologies ITS treatments (i.e. field equipment, communications and central control systems), supported by mainline and ramp geometric improvements, and dynamic management and operational strategies that are included within the Smart Freeways 'toolkit' as outlined in the Smart Freeways Provision Guidelines.

Operational capacity The maximum flow rate that achieves acceptable traffic performance of the facility and beyond which – in case of greater demand – proper operation fails. This is based on a modified definition of capacity as provided by Brilon and Geistefeldt (2009) whose research demonstrates that 'highest efficiency' flows occur if the demand volume reaches 90 per cent of the conventional design capacity.

Operational strategies A pre-determined plan that the traffic operator or central control system implements in response to real-time traffic conditions and events / incidents on the network.

Productivity In terms of freeway productivity. Refers to the Austroads definition of productivity used in the National performance Indicators for network operations (Austroads 2007). The productivity indicator is based on the product of speed and flow. Note that productivity is also used to describe community benefits arising from Smart Freeways, such as increases in economic productivity.

Reliability In terms of travel times. The Austroads definition of reliability used in the National performance Indicators for network operations (Austroads 2007) is based on the variability of travel speeds, using the coefficient of variation.

SMART Methodology to set objectives for project management and performance management that are Specific, Measurable, Attainable, Relevant and Timely.

Throughput The total traffic volume per hour that is achieved at a given point in a given time period.

Road Network Operation Centre (RNOC) The operational management centre for real-time (24/7) monitoring, control and analysis of traffic movements on Main Roads' road network.

Whole-of-Life-Costs (WLC) The total costs of ownership over the life of an asset, which includes road authority costs (i.e. maintenance, operations costs) as well as road user costs (i.e. vehicle operating and travel time costs) and community / environmental costs (i.e. crash costs).

Appendix B Smart Freeways Policy

FEBRUARY 2020



Smart Freeways Policy



Main Roads is progressively introducing Smart Freeway solutions¹ into our existing and future road assets, aiming to provide the safest, and most reliable, productive and resilient state road network for our customers.

Objectives

Our objectives are to create a world-class state road network through appropriate implementation and operation of Smart Freeways to:

- provide reliable travel times
- enable efficient movement of people and freight
- improve network productivity contributing to the state's economic prosperity
- improve safety of all road users including road workers
- reduce congestion, emissions and cost of travel
- add additional capacity to the existing roads through targeted improvements and using appropriate technology
- improve network resilience and flexibility to meet abrupt change in demand or available capacity due to incidents
- enhance real-time information to improve customer travel experience
- support connected and automated vehicles, aligned with national guidance.

Principles

This policy is underpinned by the following principles:

- Smart Freeway solutions will be guided by this policy and Smart Freeways guidelines, which are aligned with best practice.
- Smart Freeways are to be part of an integrated transport system and aligned with long-term

- Smart Freeway solutions will be designed to address specific performance issues identified by network analysis and based on robust data.
- All Intelligent Transport System (ITS) solutions will take into consideration national ITS architecture, systems engineering, whole-of-life costs, and existing and emerging technologies.
- Planning and design decisions will consider the potential impacts of connected and automated vehicles as they emerge.
- All Smart Freeway designs will be subject to operational efficiency audits.
- All roads currently at, or planned to be upgraded to, a freeway standard will, as a minimum, have real-time network monitoring capability and intelligence, and provision for higher-order Smart Freeway treatments when needed.
- Customer perspective and education are essential to the Smart Freeway solutions.
- We will confirm objectives and benefits through on-going performance monitoring, evaluation and operational fine tuning.
- We will encourage innovation and development of skills and expertise through research and development trials, as well as strategic partnerships with other road agencies, industry, research institutions and universities.



Peter Woronzow