

Tonkin Gap Project and Associated Works

Construction Update

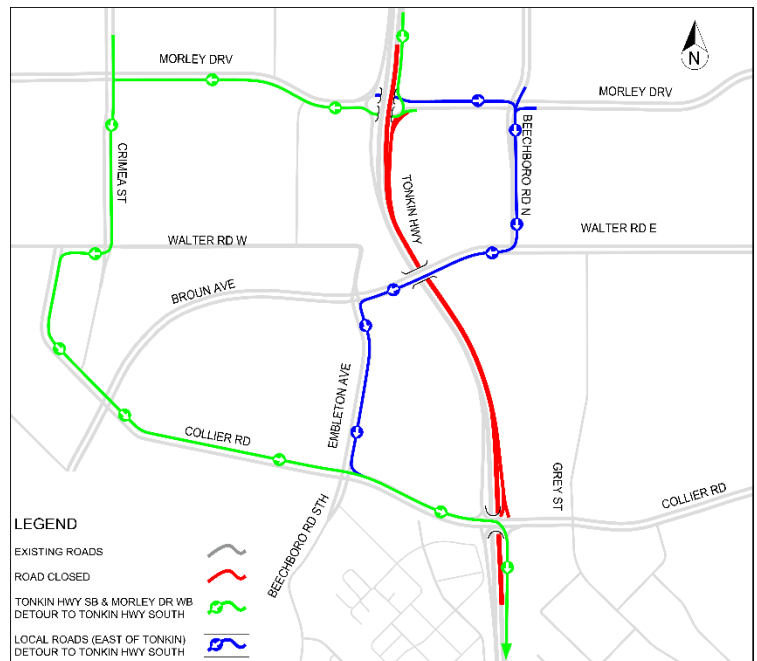
This update contains important information about upcoming works near you. Works below are anticipated in November but are subject to change. Some works will need to be undertaken at night and on Sundays. Please drive carefully and observe the road signage. There is potential for longer than usual travel times and we encourage road users to plan ahead. Up-to-date information will be available through the Main Roads website and our Tonkin Gap Facebook page. If you have any concerns during the works, please call 138 138 (24 hours).

Upcoming disruptions on Tonkin Highway

Thanks for your patience while we closed a section of Hepburn Avenue eastbound last weekend. There will be further disruptions during November and December. We appreciate your continued understanding during these works. For more information, including detour maps and specific times, visit the Tonkin Gap page on the Main Roads website.

Tonkin Highway southbound closed between Morley Drive and Collier Road - 3 to 6 November

To be able to complete the open grade asphalt - final layer of pavement - between Morley Drive and Collier Road, we will be closing all lanes on Tonkin Highway southbound between Morley Drive and Collier Road, from 9pm Friday 3 November to 4am Monday 6 November (see local detour map). We strongly advise that you plan ahead, allow for extra travel time and use the pre-capture detour at Reid Highway to avoid heavy congestion. There will be no impacts to Tonkin Highway northbound during this weekend.



Detour map

Tonkin Highway southbound closed between Reid Highway and Morley Drive - 24 to 27 November

The METRONET Morley-Ellenbrook Line contractors MELconnx will be closing Tonkin Highway southbound between Reid Highway and Morley Drive from 10pm Friday 24 November to 3am Monday 27 November to complete installation of two pedestrian overpasses.

- Pedestrian overpass one - connecting Benara Road bridge to the Noranda Station central platform.
- Pedestrian overpass two - connecting the Noranda Station car park and entrance building over Tonkin Highway and into the Noranda Station central platform.

The pedestrian overpasses have been constructed within the central median of Tonkin Highway with steel components fabricated off site. Both will be installed via crane during the weekend closure. The Tonkin Gap Alliance team may also utilise this closure for other works in the area.

We strongly advise that you plan ahead, allow for extra travel time and use the pre-capture detour at Reid Highway to avoid heavy congestion. There will be no impacts to Tonkin Highway northbound during this weekend. View the detour [map](#).

Please note that Beechboro Road North between Hennessey Road and Marshall Road will re-open during the week commencing 11 December 2023 as part of the METRONET Morley-Ellenbrook Line works.

Tonkin Highway southbound between Guildford Road and Great Eastern Highway - 1 to 4 December

Tonkin Highway southbound collector-distributor (CD) lane and ramps to Great Eastern Highway and from Guildford Road will be closed from 9pm Friday 1 December to 4am Monday 3 December. A CD road separates highway through traffic from other vehicles that are entering or exiting the highway. This closure will allow us to complete the final layer of asphalt on the southbound CD lane. During this weekend, you will not be able to enter Tonkin Highway southbound from Guildford Road or exit onto Great Eastern Highway. Southbound traffic on the main Tonkin Highway carriageway will not be impacted.

Tonkin Highway northbound between Great Eastern Highway and Guildford Road - 8 to 11 December

Tonkin Highway northbound collector-distributor (CD) lane and ramps to Guildford Road and from Great Eastern Highway will be closed from 9pm Friday 8 December to 4am Monday 11 December. This is so we can complete the final layer of asphalt on the northbound CD lane. During this weekend, you will not be able to enter Tonkin Highway northbound from Great Eastern Highway or exit onto Guildford Road. Northbound traffic on the main Tonkin Highway carriageway will not be impacted.

We expect there will be traffic delays for the above works so if you are travelling in the area, please plan ahead and account for extra travel time. Works will be 24/7 and there will be some noise and vibrations. We apologise for any inconvenience. Detour maps will be available on the Tonkin Gap page of the Main Roads website closer to the date.

Traffic realignments on Tonkin Highway and Great Eastern Highway

In November, we will continue to complete the final lane upgrades on Great Eastern Highway between Central Avenue and Moreing Street, and Tonkin Highway between Collier Road and Dunreath Drive. There will be several traffic realignments and intermittent night and weekend works including asphaltting, service and traffic signal works, water blasting and traffic barrier realignments as we move towards the end of the project. We will also start permanent line marking once we lay the open grade asphalt. There may be times where sections of road will have no line marking, however, temporary markings will be applied. Please drive to the road conditions and follow the speed limit. You may notice noise and vibrations if you are located nearby.

Under Redcliffe Bridge remediation and activation works

We are building a pump track and mountain bike skills area on the northern side. There will also be a yarning circle, aboriginal artwork, shared path connections, seating and landscaping. On the southern side of the river, works have started to rebuild the path network as well as the construction of an interpretive node which will have information about the two scar trees that were identified as part of the heritage survey. There will also be seating and a beach area for people to enjoy the river. Don't forget, we have closed the existing path under the Redcliffe Bridge on the southern side so we can complete these works. A detour is in place for path users and can be found on the Tonkin Gap page of the Main Roads website.

Guildford Road works and shared path rebuild

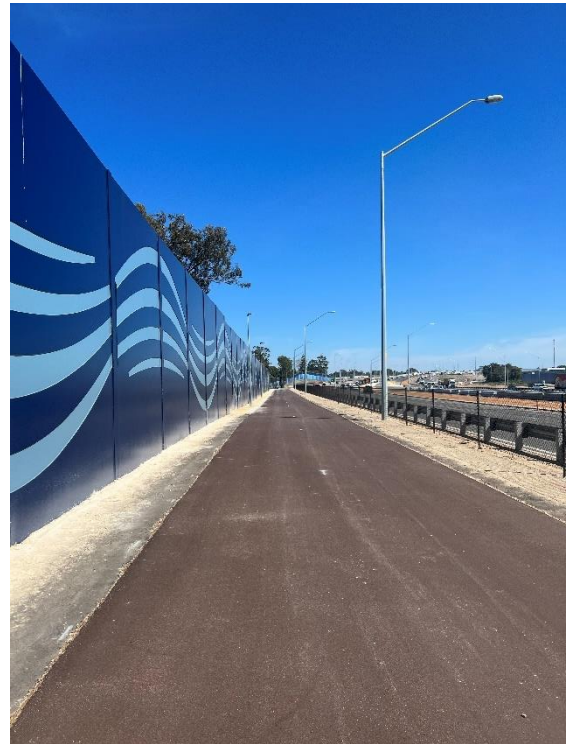
Finishing works on Guildford Road will include median island works, barrier and underbridge lighting installation, resurfacing and permanent line marking. This will all be completed during November and December. Cyclists and pedestrians will be pleased to hear we will also rebuild the shared path on the southern side of Guildford Road, adding back another connection to the network soon.

Directional signage to be installed on Great Eastern Highway

Now that the structures are installed, directional signs will be fixed on the two overhead gantries on Great Eastern Highway between Lyall Street and Boulder Avenue in late-November. To fix the signs on the gantry in front of the Ascot Apartments there will be eastbound lane and northbound ramp closure for two consecutive nights. For the gantry on Great Eastern Highway westbound just before Tonkin Highway, there will be a full closure of all westbound lanes between Boulder Avenue and Tonkin Highway for three consecutive nights from 10pm to 5am. These works will be on separate nights and detour maps and dates will be communicated via the Tonkin Gap Facebook page and on the Tonkin Gap project page on the Main Roads website.

Principal Shared Path finishing touches before opening in December

Finishing works on the Principal Shared Path (PSP) adjacent to Tonkin Highway northbound between Stanton Road and Collier Road is in its final stages with asphaltting, lighting, line marking, interpretive heritage signage installation all occurring before opening in December. We look forward to sharing this new piece of infrastructure, as well as the Aboriginal artwork in the underpasses at Guildford Road, with the community.



PSP between Dunstone Rd and Guildford Rd

Loop cutting works for services under asphalt

During November, we will continue loop cutting works at night on: Railway Parade; Guildford Road; Tonkin Highway southbound and northbound ramps at Guildford Road; and Tonkin Highway between Redcliffe Bridge and Dunreath Drive. There will be noise during these works, including the use of an asphalt saw. We understand that noisy work can be disruptive, and we apologise for the inconvenience.

METRONET Morley-Ellenbrook Line

Morley Station

Multi-storey carpark

All first-floor suspended slabs for the METRONET Morley Station multi-storey carpark are now complete. We will now start the second-floor suspended slab pours and vertical columns. There may be some noise as we conduct early morning concrete pours from 4am. Earthworks and underground drainage continue for the for the multi-storey carpark near Wotton Reserve.

Broun Avenue / Embleton Avenue intersection

We are upgrading the Broun Avenue and Embleton Avenue intersection as part of the enabling works for METRONET Morley-Ellenbrook Line. A portion of these works include several utilities being relocated, including undergrounding parts of the overhead Western Power network. In early November, we will start pre-emptive works including clearing. Then from mid-November until early-December, Western Power will be working at the intersection to relocate and underground part of the overhead power lines. Works will include earthworks and verge works. There will be lane closures on Broun Avenue and Embleton Avenue.

Some works will be required at night for service installation across the road and there may be some noise and vibrations. If there are any planned outages, Western Power will communicate directly with impacted properties. Following these works, we will complete signal and pavement works at the intersection and reinstate the turning pockets. We anticipate completion of these works in early-2024.

Noranda Station

Carpark

We are in the final month of underground drainage installation for the METRONET Noranda Station carpark, and we will be handing over the final area of the carpark to the METRONET Morley-Ellenbrook Line contractor MELconnx, who will be completing works in the area. Pending approvals, the shared path that runs from Acacia Court to Benara Road will remain closed until late-2024. If you have any enquiries about the works or would like to stay up to date, please sign up for updates at <https://www.metronet.wa.gov.au/> or contact METRONET on 08 9326 3666.

Benara Road underpass and roadworks

In mid-November we plan to re-open both carriageways on Benara Road and reinstate the right turn from Mahogany Drive. We will also re-open the shared paths on the southern side of Benara Road and at Davis Court. Underpass structural works are also complete and will now be handed over to MELconnx to complete. Finally, once Benara Road is complete, traffic signals will be installed at the carpark entrance, however, these will remain inactive until the METRONET Noranda Station is operational. Day time lane closures may be required for finishing works.

Malaga footbridge

This month will be all about the structure with concrete pours for the abutments, mechanically stabilised earth (MSE) retaining wall installation and works for the approach ramps. Due to the close proximity of our western abutment to the principal shared path (PSP), we needed to install sheet piles into the path, and it will remain closed between Premier Place, Ballajura and Marshall Road until early-2024. We apologise for the inconvenience and aim to have this open as soon as it's safe to do so.

Out of hours works continue through November

There will be asphaltting, water blasting, traffic realignments and barrier works at night and on weekends at various locations across the project. Ramp closures will be required for some of these works. Locations include:

- Tonkin Highway between Collier Road and Dunreath Drive
- Great Eastern Highway in both directions between Lyall Street and Boulder Avenue
- Tonkin Highway southbound between Collier Road and Redcliffe Bridge
- Guildford Road between Tonkin Highway ramps
- Broun Avenue / Embleton intersection

Please check the Tonkin Gap Facebook page and Tonkin Gap Project page on the Main Roads WA website for specific details on the above works.

What can I expect?

- Our work activity and vehicle movements may be noticeable across all areas. Noise and vibration management measures are in place, including use of the quietest equipment reasonably available.
- High noise level equipment will be located away from residential areas, and noisiest activities scheduled to take place earlier in the night. Work will be in accordance with a noise management plan approved by your local government authority. If you have concerns, please call 138 138 (24 hours).

For more information on Tonkin Gap

W: <https://www.mainroads.wa.gov.au/tonkin-gap/>

E: enquiries@mainroads.wa.gov.au

T: 138 138 (24 hours)

FB: <https://www.facebook.com/groups/tonkingap/>

For more information on the Morley-Ellenbrook Line

W: www.metronet.wa.gov.au

E: info@metronet.wa.gov.au

T: 08 9326 3666

FB: <https://www.facebook.com/groups/morley.ellenbrook>