

Swan River Crossings - Fremantle Traffic Bridge



Hon Josh Wilson, Federal Member for Fremantle, Hon Catherine King, Minister for Infrastructure, Regional Development and Local Government, Hon Simone McGurk MLA, Member for Fremantle and Lisa O'Malley, Member for Bickton, turn the first sod to formally mark the start of major works.

Cranes arrive at Fremantle foreshore as construction gets underway

Following four years of extensive consultation and design refinement, substantive construction of the Swan River Crossings project is underway. The project will replace the existing Fremantle Traffic Bridge, creating a striking gateway to Fremantle (Walyalup).

On 3 September, our team welcomed representatives from the Australian and State Governments to turn the first sod and commemorate the important milestone.

Look up!

Four large crawler cranes are expected to fill the Fremantle Port skyline by the end of September and will stay in place until project completion. The cranes will perform various tasks on the project - from holding the hammer used for piling, to lifting heaving materials, including the new precast bridge deck into place and assisting with removing the existing bridge.

These four special cranes will be fuelled using B5 biodiesel, which is a blend of 5 per cent biodiesel and 95 per cent petroleum diesel, stored in solar powered fuel pods. Using B5 will reduce the overall emissions on the project and is a first of its kind on a major infrastructure project in WA.

How tall are they?

The four cranes will vary in height and look different at various stages of the project. The cranes sit at 50 metres high – in comparison to the 86-metre-high Zhen Hua 24 crane on North Quay.

How much can they lift?

The two small cranes have a 320-tonne lifting capacity, which is about the weight of 45 large African elephants. The two larger cranes have a 480-tonne lifting capacity, or about 69 large African elephants.

When will the cranes be in use?

Generally, the cranes will be used between 7am and 7pm, Monday to Saturday. This may change depending on weather and construction demands.

Who operates the cranes?

A crane operator must obtain a high-risk work licence. Multiple 'Dogmen' are on site to direct each crane driver via two-way radio. A Dogman selects the correct lifting gear and inspects the crane before use, and then secures the load to the hook of the crane and directs it into the air.



320T Crawler crane on the north eastern river embankment in front of the apartments.

Smoking Ceremony at Hazelmere precast yard

A Smoking Ceremony was held on 17 July at the project's precast facility in Hazelmere. All concrete beams for the new Fremantle Traffic Bridge will be manufactured at this site and transported to Fremantle. This minimises the project footprint in Fremantle by reducing the public space the project occupies and helps to build the bridge more efficiently with less impact to the community.

Noongar Elder Neville Collard captivated our workforce at the Welcome to Country and Storytelling Ceremony. Neville has been on our Elders Reference Group for several years. The Whadjuk Elders have informed the bridge design by highlighting the importance of minimising the number of piers in the river to maintain flow of water. Removing piers in the river will renew and enhance the long Aboriginal connection to the area, with unimpeded water flow preserving Aboriginal Songlines and Dreaming Stories, while allowing the Spirits to flow along the river out towards Wadjemup (Rottnest Island).

The Ceremony acknowledged the Ancestors and the land and the waters of country the project encompasses. It welcomed, cleansed and promoted the safety and wellbeing of visitors and workers by burning a small amount of local plants including Sheoak, Tuart and Peppermint leaves and twigs.



Smoking ceremony at Hazelmere precast facility

Building more than just a bridge - helping our community

St Patrick's Community Support Centre, known locally as St Pat's, has been working closely with vulnerable people in Fremantle and Perth's south for 50 years, providing targeted services for people experiencing rough sleeping or significant disadvantage.

Nine project team members had the privilege of volunteering at St Pat's to help them move to a new warehouse location in Fremantle and sort donations of clothes, kitchen accessories, bedding, and toiletries into starter packs for those in need.

We were grateful for the opportunity to contribute to the wonderful service they provide to the community.



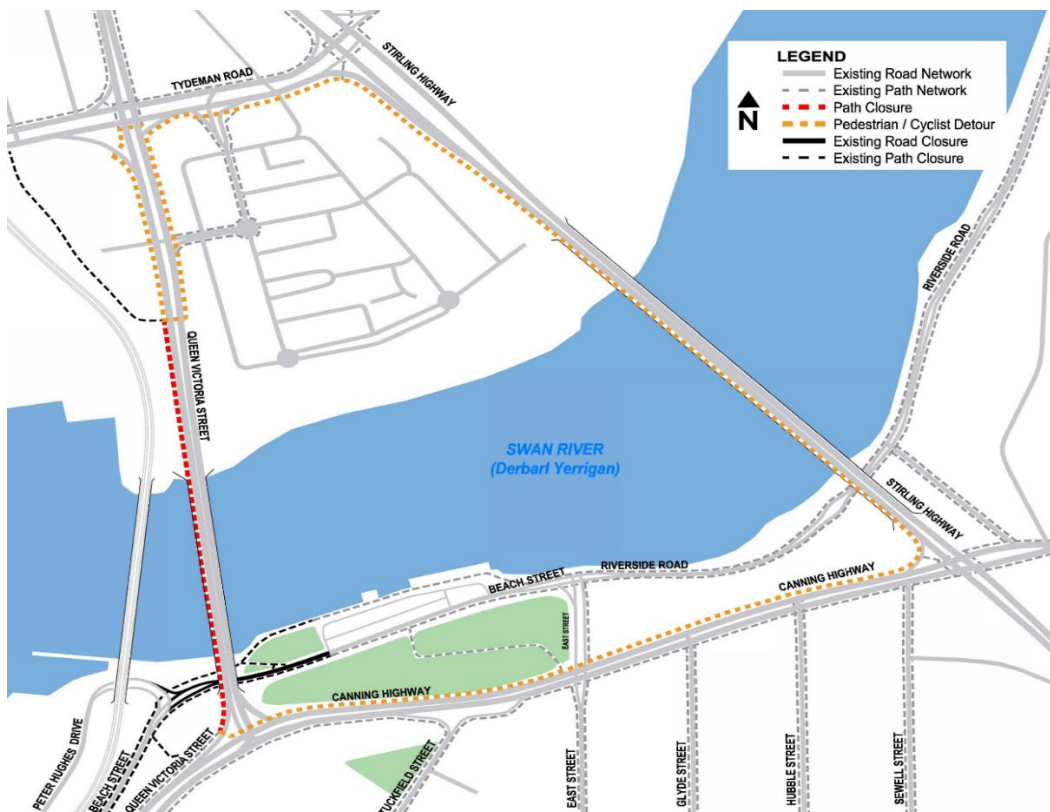
Team members volunteering at St Pat's

Construction Update

In-river piling works – shared path closure

To build the new bridge, in-river piling works are required to construct four temporary jetties and permanent bridge foundations. Due to the unique site geology, the temporary jetty construction and main bridge pier piling works can only be delivered by driving piles via hydraulic impact hammers.

Piling noise generates significant noise which may impact human hearing. To minimise the risk to pedestrian and cyclists, the shared path on the Fremantle traffic bridge will close during working hours.



Detour map for cyclists and pedestrians via Stirling Highway.

In-river piling works

Underwater noise is magnified, travels a lot further and has the potential to cause damage to human hearing. To maximise river user safety, there are restrictions in place for swimmers and passive craft users between Fremantle Traffic Bridge to east of Stirling Bridge.

Restricted Area

Australian Government
BUILDING AUSTRALIA

mainroads
WESTERN AUSTRALIA

BEACHES CLOSED

MONDAY TO SATURDAY 7AM TO 7PM



Piling works in progress at Fremantle Traffic Bridge can generate a high level of noise which is significantly magnified underwater and can have immediate adverse effects on hearing of swimmers, including dogs.

- No Swimming
- No Snorkelling
- No Scuba Diving
- No Dogs in Water
- No Passive Craft:
 - No Stand-Up Paddle
 - No Kayaking
 - No Rowing
 - No Hydrofoil

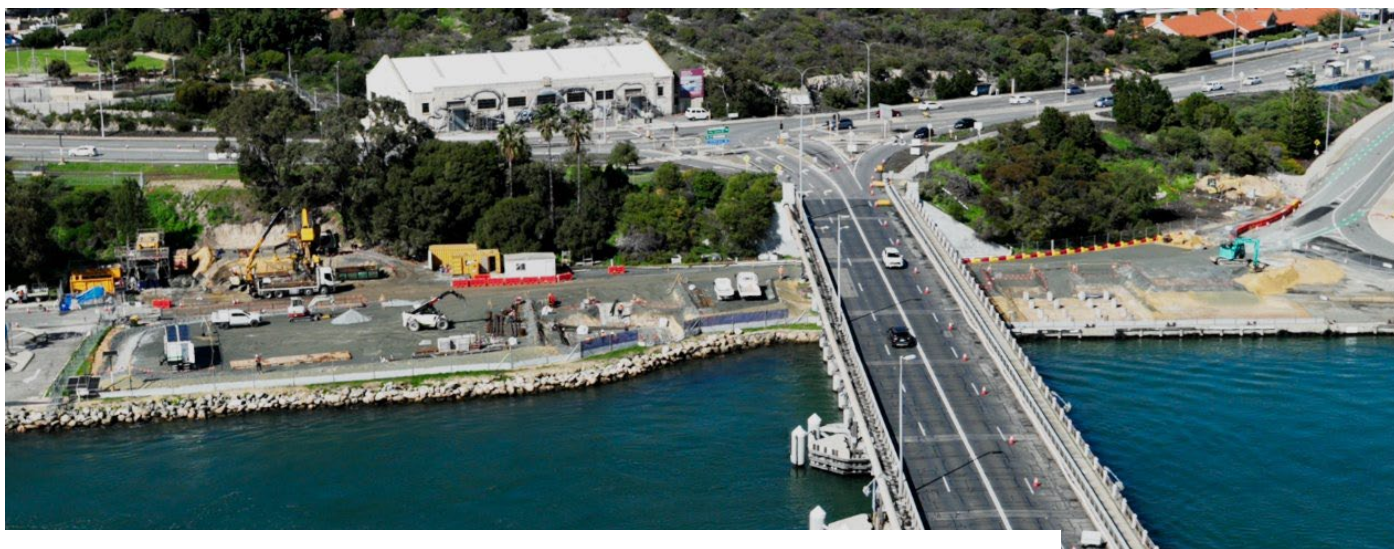
Scan here for more information



An example of signage located along the river.

Temporary access ramps

Temporary works for pile installation are progressing well. The first access ramp on the north-east side of the river is complete and the crane is in place. Similar works on the south side (both east and west of the bridge) are progressing. Cranes will use these ramps to construct the temporary jetties that will provide a base from which to build the new bridge.



Preparations on the southern side of the bridge for temporary ramp construction.



Laying basecourse for the north-east ramp.

Service relocation works

Drilling continues under the riverbed in preparation for the installation of two new 630mm water pipes. Work involves welding segments of water pipe together into a 400-metre pipeline, pressure testing the pipe and pulling it under the river from the north to the south. The pipes will be located 55 metres under the Swan River, which is the equivalent of a 19-storey building. Consequently, the car park on Podger Lane (near the Swan Hotel) and the shared path adjacent to the rail line remain closed.



A section of assembled water pipe

Other works

Site offices and associated facilities will be set up in North Fremantle near the Podger Lane car park and should be operational by October.

The local community will see an increase in material deliveries arriving on site, and active plant and machinery moving throughout the project area. Whether you are a path user, road user or river user, please proceed with caution and adhere to signage in the area. We thank you for your patience and apologise for any inconvenience.

Further Information

Click [here](#) to learn more about the project. For enquiries, please phone 138 138 or email enquiries@mainroads.wa.gov.au.

