

Mandurah Estuary Bridge Duplication

More lanes on the way

Every day, more than 33,000 vehicles use the existing Mandurah Estuary Bridge which was built in the 1980s. Now with rapid population growth in the area, and congestion an ongoing issue, particularly during the busy holiday seasons, it is time to expand the bridge's capacity.

This \$136 million project is delivering a second, two-lane bridge on the south side of the existing structure to provide additional traffic lanes. The project design includes provision for a third lane in each direction. This means that at the end of the project, both bridges will have the capacity to move to a three-lane configuration in the future as population and traffic demands.

The project, which began construction in January 2024 has completed preliminary earthworks and drainage. Piling has started for the bridge piers which will hold the bridge segments across the estuary has started.

The new southern bridge will have a four-metre-wide shared path underneath, like the one on the north side to help the local community better access recreational activities. We are also building a new accessible fishing platform on the eastern foreshore to enable people of all abilities to enjoy the area.

The bridge is expected to be open by late 2025, with finishing works continuing into early 2026.

Project facts

- 8 span incrementally launched bridge over estuary (380m total length)
- 7 x marine piers
- Universally accessible fishing platform
- 1.2 km of new road on the westbound side and upgrade on the eastbound side
- 1.5 km of noise and retaining walls

Taking care of the environment and marine life



Project Director Nick Kelly with Dr Krista Nicholson, Robyn Bicknell and Sustainability Manager Mel Arias

We realise that the estuary and its marine life is very important to the local community as well as visitors to the region. We have partnered with Estuary Guardians Mandurah to make sure we know how to protect dolphins and other marine life in the estuary during construction.

Recently, the project team participated in highly informative 'toolbox talk' and educational session hosted by Dr Krista Nicholson and Robyn Bicknell from Estuary Guardians Mandurah. At this session, the team learned about the dolphin population, said to be about 85, in the Mandurah Estuary and surrounding waters, and the importance of caring for the estuary and its fauna during our works.

The project is currently raising funds for the Estuary Guardians community group through Containers for Change recycling collection at our site compound.

Incremental bridge launch

Once we get started, you'll see the new Mandurah Estuary Bridge grow and grow, before your very eyes as segments are incrementally launched across the estuary.

The construction method, also used on the Mandurah traffic bridge and the Mooro-Beeloo Bridge in Ascot, will reduce the impact to the estuary. Bridge segments are constructed at the casting bed on site and launched across the estuary from the south-east side of the existing bridge.

During the next few months, you can expect to see the bridge segments move up to 18 metres every 2-3 weeks. The new and old bridges combined will accommodate four lanes of traffic on top, with capacity to increase to six lanes when required. There will be with a shared cycle and pedestrian path underneath the new bridge similar to the one on the existing bridge.

We aim to have you driving on the new lanes and bridge by the end of 2025. Main Roads Project Director Andrew Ives



The Tonkin Gap project used a similar technique to construct the Mooro-Beeloo Bridge.

said the team has worked closely with the local community and stakeholders to get to get the go-ahead to start construction.

"Working across any waterway has many challenges, and our team is always striving for, and delivering excellent results," he said.

"We realise those people living nearby the construction site will be impacted with the noise and activity that goes with any major construction project. We will continue to work with the community throughout the project and look forward to opening the new bridge to traffic."

School engagement

The Project hosted 75 pupils from Dudley Park Primary School and Halls Head Primary School in a fun filled morning including building a bridge from popsicle sticks, paper plane engineering and other activities. The group also painted the girder, creating a splash of colour and their interpretation of the Mandurah Estuary before it starts to launch across the estuary.

The group were also filled in on the different aspects of building the bridge with the Project team answering a range of questions and inspiring some budding engineers.



Our Sustainability commitment

For Main Roads, sustainability is the commitment to creating lasting benefits through an integrated consideration of social, environmental, and economic aspects in all that we do.

Infrastructure sustainability is when infrastructure has been planned, designed, constructed, and is operated to meet the needs of society without compromising the needs of future generations, while enhancing our environment and economy.

On the Mandurah Estuary Bridge Duplication Project, we are seeking an official Infrastructure Sustainability Rating through the Infrastructure Sustainability Council (ISC) during the planning, design and construction phase of this project. This means we are embedding a high level of sustainable practice into all aspects of design and construction, based on industry-leading standards.

Our team has worked collaboratively to develop the project vision of a:

"Connected, accessible and quality bridge and fishing platform that delivers a positive legacy by embracing local culture, improving habitat and amenity, and enhancing sense of place."

The project vision is supported by objectives and targets that the team will work towards during the planning phase, to ensure it achieves good sustainable outcomes for local communities and broader Peel region.

The role of these targets is to help support key decision making, reduce risks and identify sustainable opportunities.

Aboriginal business engagement

The Project held a procurement open house event in February 2024 that resulted in numerous Aboriginal businesses being engaged with the project and ongoing dialogue to engage local business to undertake upcoming works packages earmarked for Aboriginal business.

From this session, 12 local businesses and representatives from Waalitj Hub and Many Rivers had the opportunity to connect and engage with the Project. These organisations assist emerging Indigenous businesses in understanding tender processes, developing capability statements, websites and more.

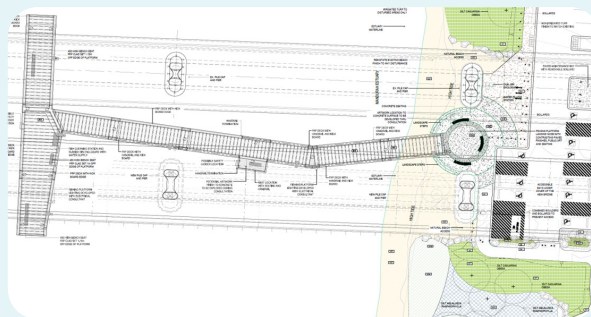
Our team is committed to working closely with these businesses to ensure they have every opportunity to contribute to the project.

Information drop-in session



Hundreds of locals recently took advantage of a pop-up display at the Halls Head Central to get the latest information on the project.

Project team members from design, construction, urban design, and community engagement were on hand to answer questions, along with some of the senior management team.



Fishing platform design

Fishing platform available to all

Many residents of Mandurah and nearby love to spend time fishing or just relaxing by the water. While the current fishing platform under the bridge offers some people the ideal spot to enjoy some peace, its location makes it inaccessible for a lot of others. As part of its commitment to sustainability, the Project will build an accessible fishing platform and public amenity area with car park on the site where the current project compound is located.

This amenity will provide access to the foreshore for all members of the community to enjoy. The current fishing platform on the northern side of the existing bridge will also remain in place.

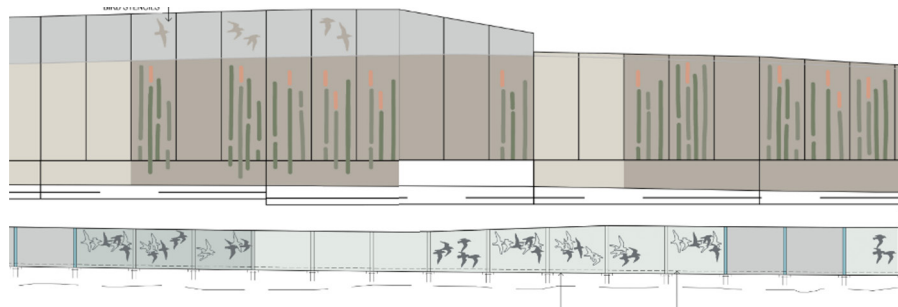
The fishing platform will be one of the last parts of the project to be completed, although piling in the estuary for it will start in September this year.

Artwork and urban design

An important part of all Main Roads projects is the landscaping and design. The Mandurah Estuary Duplication Bridge Project has Urban Landscape Design (ULD) elements including on noise walls as well as standalone art installations and artwork.

Artist Paula Hart has been selected to create an installation featuring life sized statues and stories from local people.

Artist Mark Datodi was chosen to create a concept and his theme of wetland shore birds in flight has been selected for the noise walls, complemented by a colour palette that captures the shifting colours of water receding on the shoreline to the sky above. Inspired by the local samphire plant, patterns and colours used on the



Noise wall designs

reverse side of the noise walls will also be subtle by design, to blend in with the surrounds and future revegetation.

We are working closely with the Bindjareb Aboriginal Reference Group on the selection of artists and concepts for a mural on the resident side of the noise wall in the northwest quadrant of the

project, and pier artwork.

Landscaping is one of the final elements of the project to be completed. We have chosen native vegetation species (including trees), incorporating aesthetic design elements and rock pitching. These choices were informed by feedback from the City of Mandurah.

Working groups get up close and personal



Working group members

We welcomed residents from Waterlily Drive onsite for an informal meeting to update them of the casting bed and associated works that are being set up adjacent to their homes.

Following the information session, residents were given a site tour and the opportunity to see for themselves the construction progress and where the team is working.

We also invited residents from Waterlily Drive to form a representative advisory group to ensure we continue to share knowledge and information about the project in a meaningful way and enhance the outcomes of the Project.

Recent and upcoming milestones

2024

Marine pier piling begins August 2024
Fishing platform piling commences August 2024
First bridge segment launch September 2024

2025

Bridge segment launch continues June 2025
Bridge expected to open to traffic late 2025

Further information

Jointly funded by the Australian and Western Australian Governments, the \$136 million Mandurah Estuary Bridge Duplication project is delivering a second, two-lane bridge on the south side of the existing structure to provide additional traffic lanes.

A new four-metre-wide shared path will also be built to help the local community better access recreational activities. A new accessible fishing platform will also be provided on the eastern foreshore.

To stay up to date with the latest project information, please visit www.mainroads.wa.gov.au/mebd and subscribe for project updates. You can also join our Facebook Group, Mandurah Estuary Bridge Duplication Community Group | Facebook.

www.mainroads.wa.gov.au



138 138
enquiries@mainroads.wa.gov.au
www.mainroads.wa.gov.au