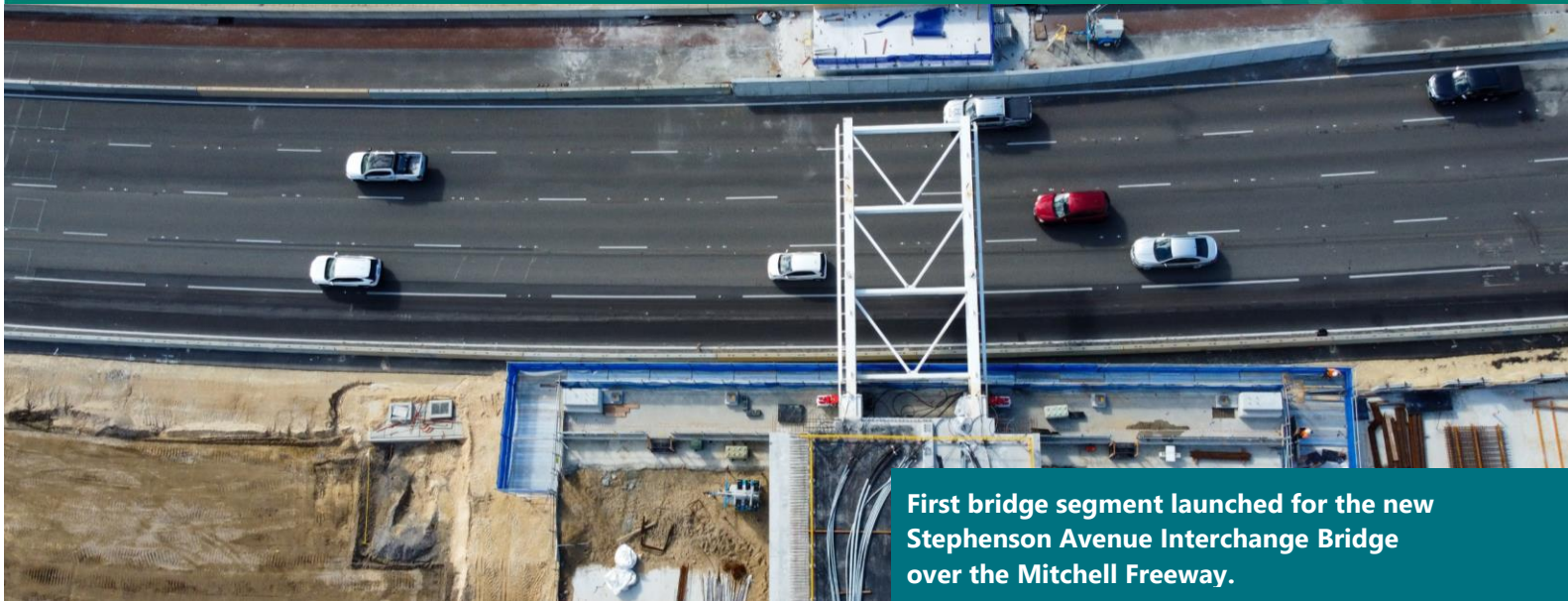


Stephenson Avenue Extension Project (Phase 2)



First bridge segment launched for the new Stephenson Avenue Interchange Bridge over the Mitchell Freeway.

This update contains information regarding the current and future works happening on the Stephenson Avenue Extension project. Information in this update is current as of August 2024 and is subject to change. For the most recent updates visit the Main Roads Stephenson Avenue Extension website.

Project update

The Stephenson Avenue Extension project is now over 47 per cent complete.

Transport Minister Hon Rita Saffioti MLA, accompanied by Stuart Aubrey MLA, Local Member for Scarborough, visited the Stephenson Avenue Extension Project to inspect the first phase of the incremental bridge launch process for the new Stephenson Avenue Interchange Bridge and Stirling Station Bus Interchange Bridge in early June.

They were given a short tour of the Stephenson Avenue Interchange Bridge launch pad, where a further 11 bridge segments for the Stephenson Avenue Bridge will be constructed and launched over the Mitchell Freeway.

The Transport Minister and S2ME Alliance Construction Manager Bill Stewart were interviewed regarding the incremental launching method, which showcases an

unique approach to build over live traffic and the rail network.



Minister Saffioti (third from right) and Stuart Aubrey (second from right) on site with the Main Roads project director and S2ME Alliance project team members.

Bridge launches a go!

In an exciting project first, the Stirling Station Bus Interchange Bridge and Stephenson Avenue Interchange Bridge begun launching, with the first bridge segments incrementally launched over the Mitchell Freeway in early June.

This technique involves the construction of bridge segments on site using casting beds, where the reinforced concrete segments are poured and cured before being launched over live traffic and rail.

During the next several months, you can expect to see this launch process occur three times over the freeway and Yanchep Line for each bridge. Once the full length is constructed, it will be slid sideways to repeat the process and form the full width of the bridges.

This innovative construction method, combining the incremental launching and sideways sliding, will minimise disruptions to road users and rail commuters during works.

"Launching the two structures is an advanced solution for the delivery of the new bridges. We can carefully monitor the quality of each segment before launching, and then 'push' out with minimal disruption. Although slightly unusual in nature, this method is well engineered," Matt Baston, Launch Manager, said.



Bridge segments for the Stirling Station Bus Interchange Bridge progressing over the Mitchell Freeway.

Asbestos management update

In June, asbestos management measures were implemented following the discovery of suspected asbestos containing material within the project's stockpile areas.

Ongoing airborne asbestos monitoring results have continued to return results below the DWER health and environmental thresholds.

Works on the project have recommenced in areas that have received clearances from industrial hygiene experts and will progressively continue to open up as further clearances are obtained.

The health and wellbeing of the community and our workers is our priority. We will continue to work with DWER, the Department of Health and the City of Stirling on the ongoing management of the stockpiles.

Mitigation measures will continue to be implemented for the remainder of the project, including dust and airborne asbestos monitoring and the application of dust suppression polymer.

For more information read our updated Frequently Asked Questions by scanning the QR code.



Stirling Station car park access changes

We are upgrading the southern car park at Stirling Station, which will improve how car park users navigate through the car parks and to the station.

Works are scheduled to start later this year and will require the southern car park to be closed from mid-September to safely facilitate construction works.

Alternative temporary parking will be provided for Transperth passengers. Further details for alternative parking will be provided closer to the closure.

ACROD parking bays, short-term parking, and Drop Off - Pick Up bays will remain accessible and be relocated to the eastern section of the southern car park during works.

There will be no disruption to the northern car park.

Once the works are complete, access to the Station's southern car park will be via Cedric Street and the new Stephenson Avenue.

Stay up to date on these changes on the project [website](#) or sign up for updates [here](#).

Southbound on-ramp at Stephenson Avenue opening in the third quarter of 2024

A new Mitchell Freeway southbound on-ramp from Cedric Street along the alignment of the future Stephenson Avenue will open in the coming months.

When this occurs, the temporary alignment of the Mitchell Freeway southbound on-ramp from Cedric Street will permanently close. Stay tuned for more information.

Feeding hope for a fresh start

Connecting with the local community is important to the project. We were proud to support the City of Stirling's Women Centre – helping women and children escaping family or domestic violence.



their homes in search of a new beginning free from violence.

"The donations will make a tough time a little easier for families accessing our services. After escaping with often nothing more than the clothes on their back, being able to supply families with items to help them prepare meals when they arrive here means a great deal," Angela, Women's Centre Coordinator, said.

Celebrating NAIDOC Week – 7 to 14 July

In the spirit of this year's NAIDOC Week theme, 'Keep the Fire Burning! Blak, Loud and Proud', S2ME Alliance members came together to celebrate the week and commemorate the strength and resilience of First Nations People with an informative NAIDOC Week presentation, followed by an interactive cultural activity.

Several team members also attended the City of Stirling's Mirrabooka NAIDOC Event on Thursday 11 July. Attendees were given the opportunity to connect with members of the local community and learn about First Nations culture and histories by participating in celebrations of the oldest, continuous living cultures on earth including ceremony, entertainment, and cultural activities.



Team members enjoying the City of Stirling's Mirrabooka NAIDOC Event.

"This year's NAIDOC theme is important for all of us. Not only do First Nations people need to keep the fire

Over several weeks, we held a food-drive for the Women's Centre, with project team members donating an assortment of non-perishable food items, including pantry essentials, to help make grocery shopping and cooking dinner a little less stressful for the women who have left

burning; maintaining connection to Country, culture and ancestors, but it is also non-Indigenous people who need to support us along the way so together we can create better futures for all," Jade Bradford, Aboriginal Participation Manager, said.

Vegetation management

The Stephenson Avenue Extension Project is committed to minimising vegetation clearing.

Our crews will soon commence the safe removal of vegetation of the road reserve along Cedric Street, between Ellen Stirling Boulevard and the Mitchell Freeway northbound on-ramp and off-ramp, which is required to:

- construct retaining walls and noise walls
- accommodate changes to the road network.

No local fauna was found inhabiting the vegetation that will be cleared.

Where possible, we will carry out most clearing activities during normal construction working hours (Monday to Saturday 7am to 7pm). However, some clearing will need to occur at night as road closures along Cedric Street are required. We expect some of this work to be noisy and apologise for any inconveniences this may cause.

As part of our sustainable approach to vegetation clearing, some removed vegetation will be mulched for use in landscaping the project site.

Replanting of trees and vegetation has been planned as part of the project including 225 trees and approximately 100,000 tube stock plants as these have the greatest chance of survival.

A copy of our [Environment Management Fact Sheet](#) is available for viewing on the Main Roads website.

For more information

Are you receiving our notifications? We regularly send out email updates to our subscribers on upcoming works and what's happening on the project.



Sign up for updates by scanning the QR code, or visit the [Main Roads website](#).

If you have any questions, please contact **138 138** or email enquiries@mainroads.wa.gov.au

To provide feedback on how we are communicating with you, take our Customer Feedback Survey ([Stephenson Avenue Extension Project - Phase 2 | My Say Transport](#)).