



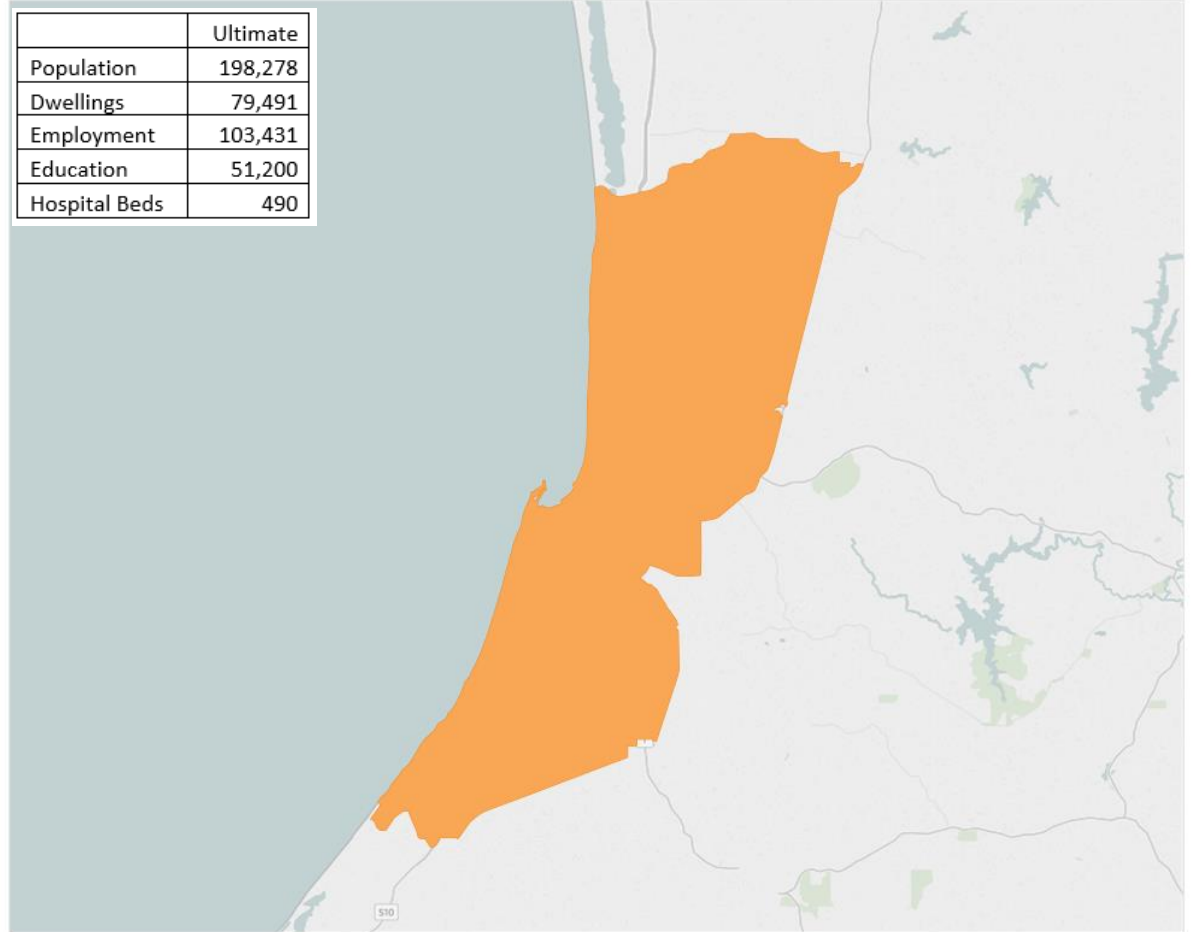
Land Use & Population

Hannah Ruprecht & Chris Mitchell

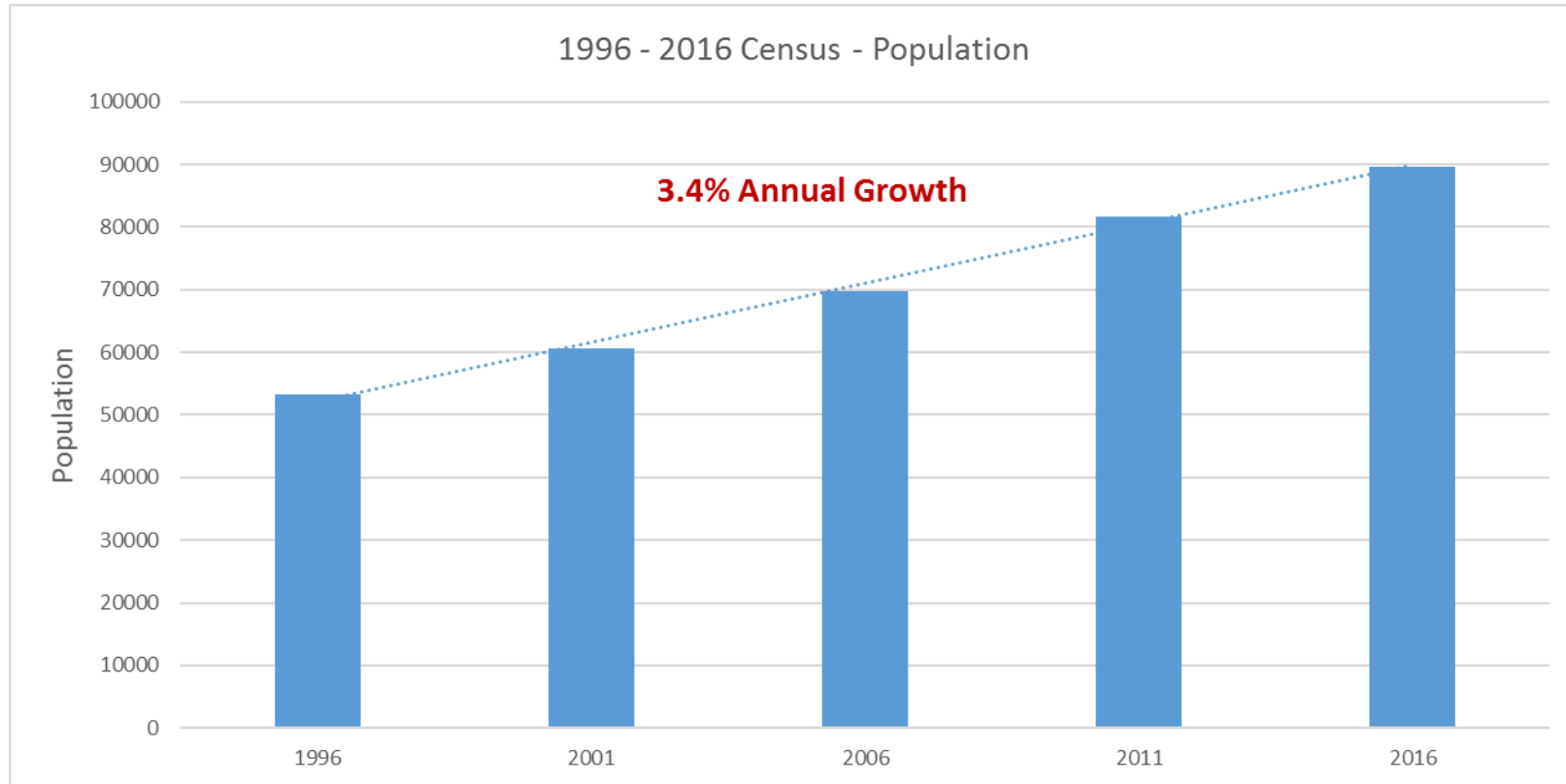
Bunbury Transport Model

- Land use from Department of Planning Lands and Heritage
- City of Bunbury, Shire of Capel, Shire of Dardanup, Shire of Harvey
- External Zones

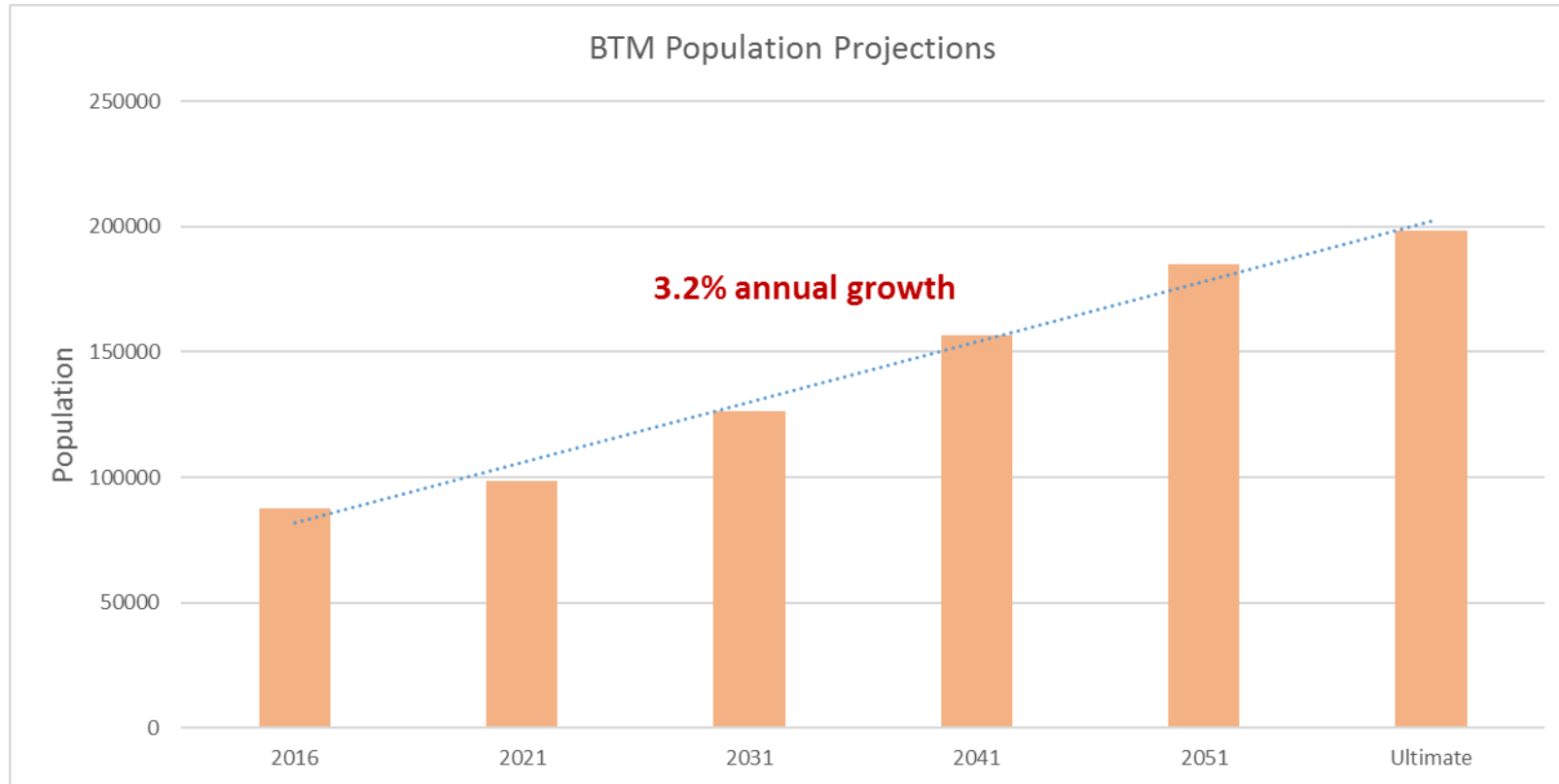
	Ultimate
Population	198,278
Dwellings	79,491
Employment	103,431
Education	51,200
Hospital Beds	490



Greater Bunbury Historical Population Growth

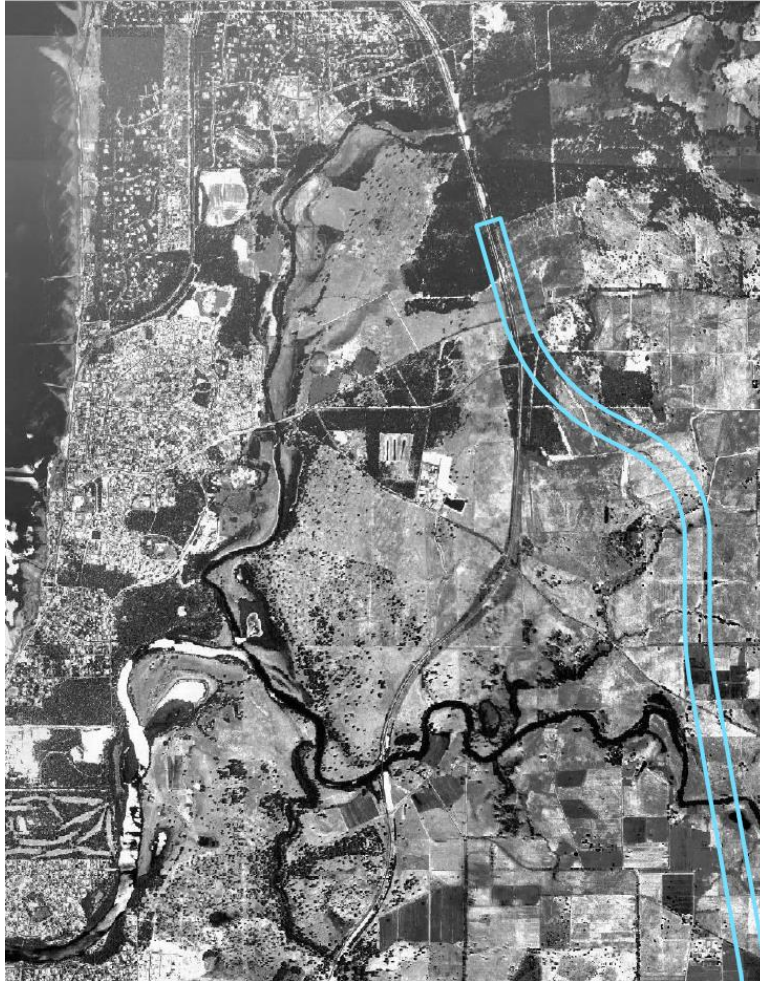


Forecast Population Growth as per DPLH





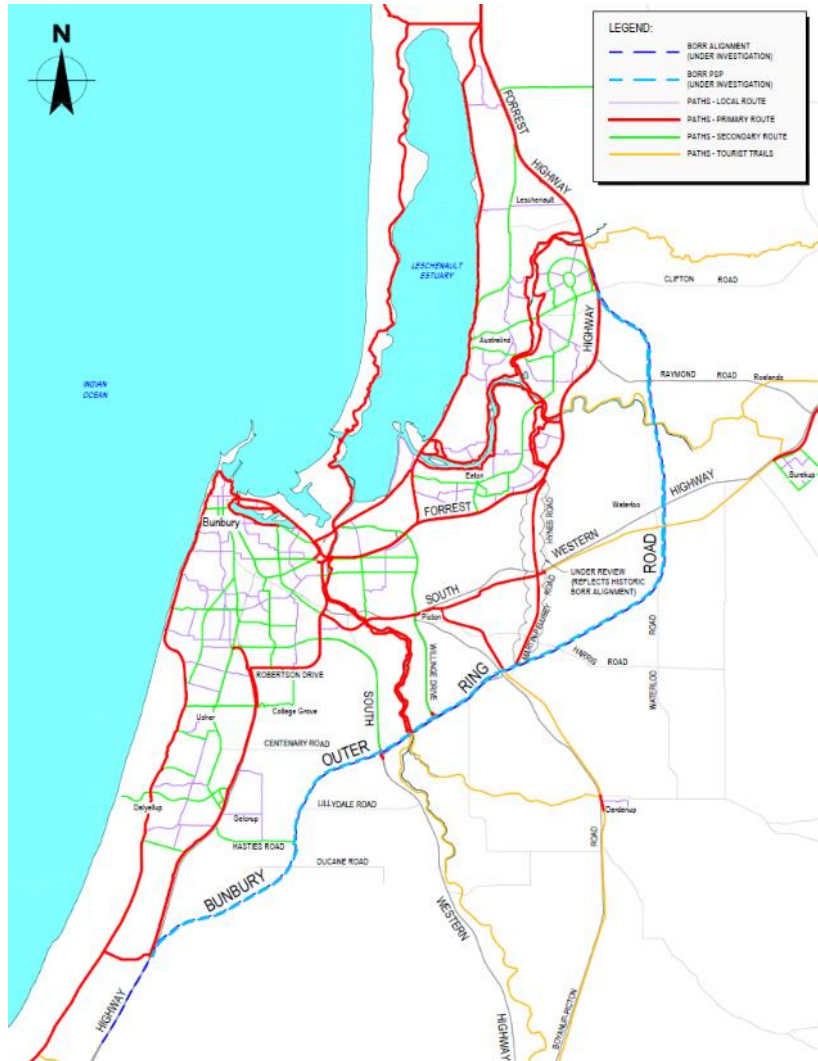
Historical Development 1996 vs 2018





Principal Shared Path Network (PSP)

Chris Mitchell



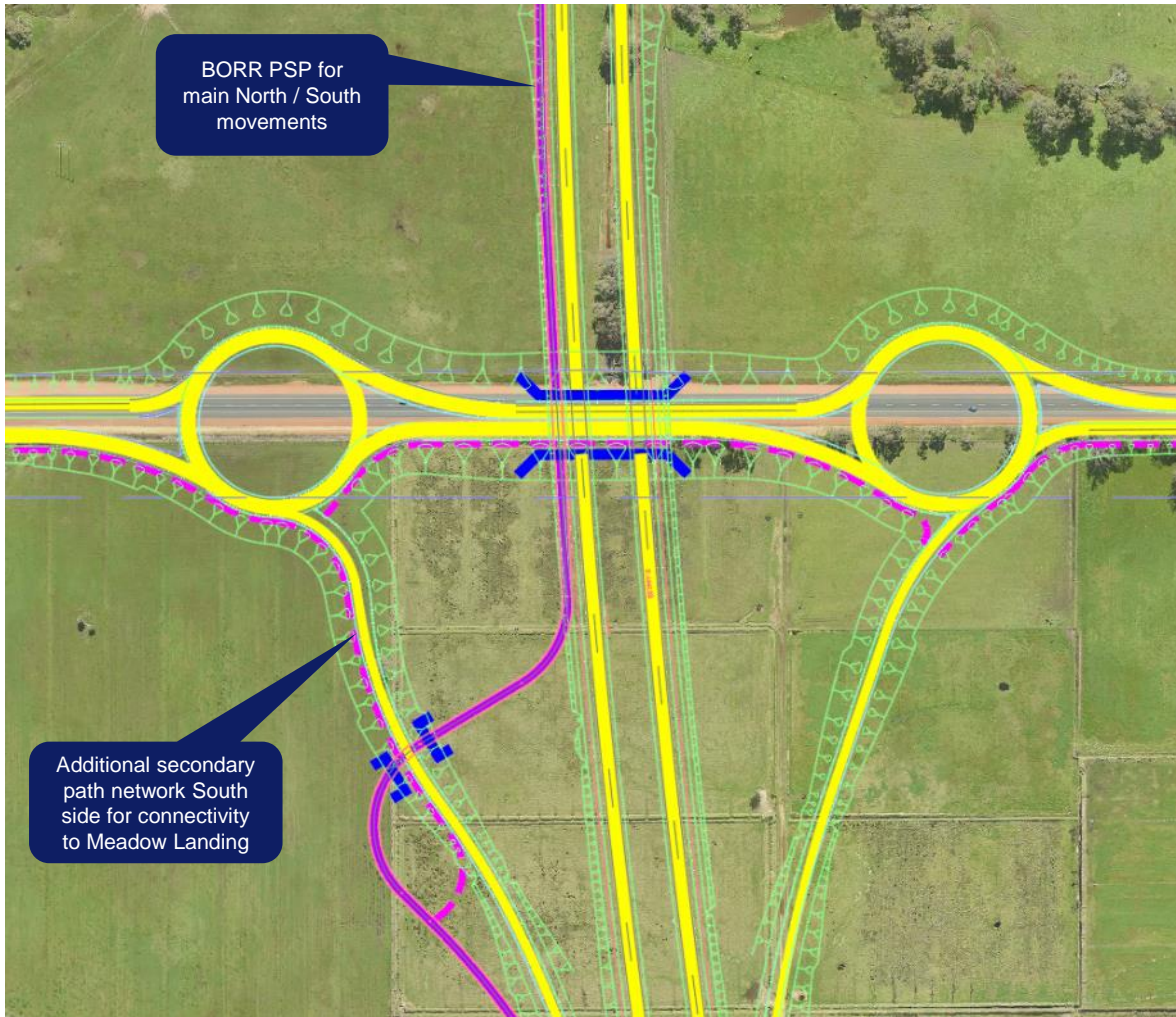
BORR Cycle Network

- Bunbury Wellington 2050 Cycling Strategy
- Principal Shared Path (4.6 m seal, 4.0 m wide path) along the West side (*ultimate*)
- Grade separation at interchanges
- Connection to existing path / on road networks
- Provision for connection to proposed networks
- Issues / interfaces to resolve



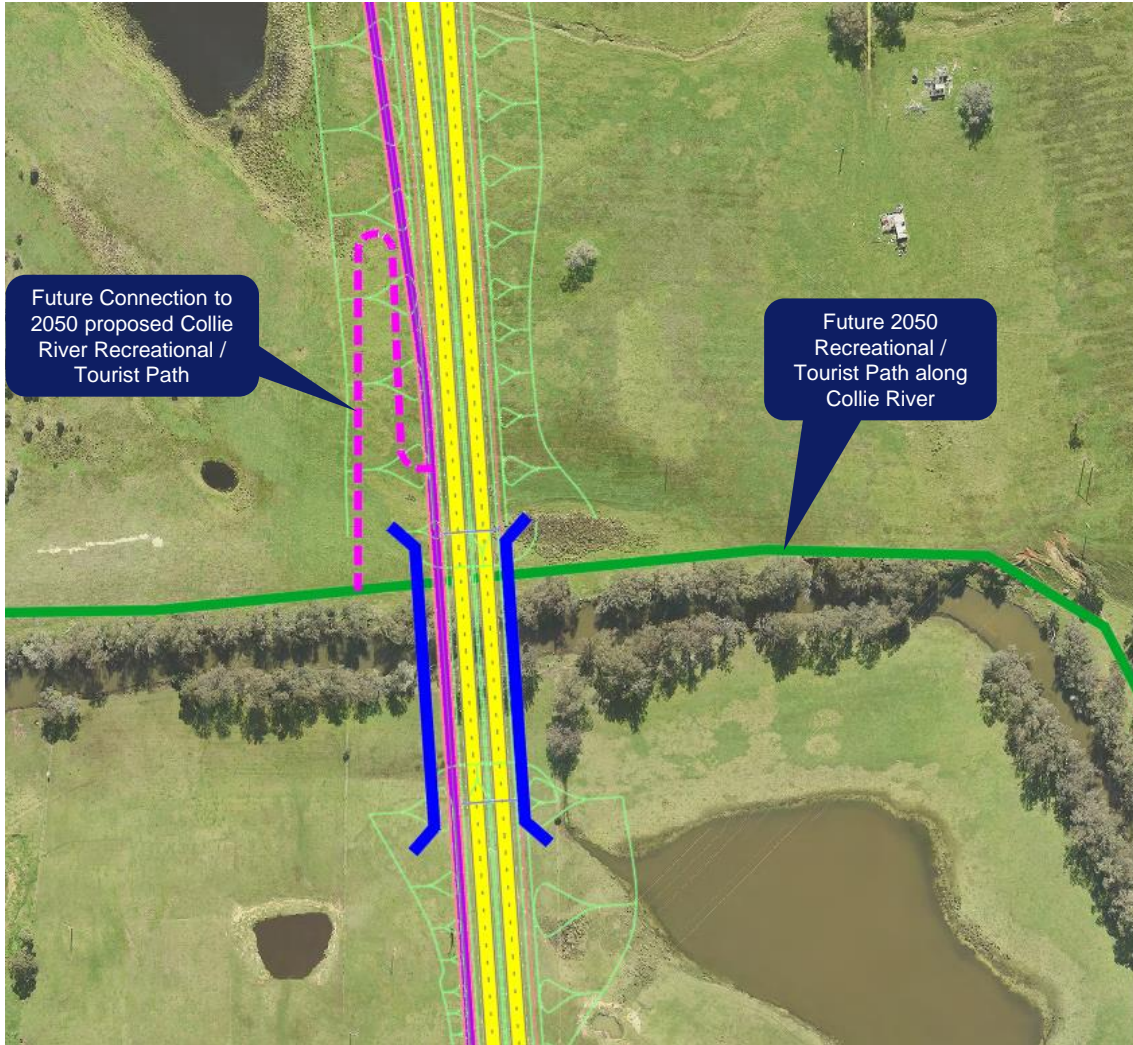
Forrest / BORR Interchange

- Connection allows access to / from the PSP and 2050 Strategy
- Access to Australind
- Limit of BORR works to be confirmed



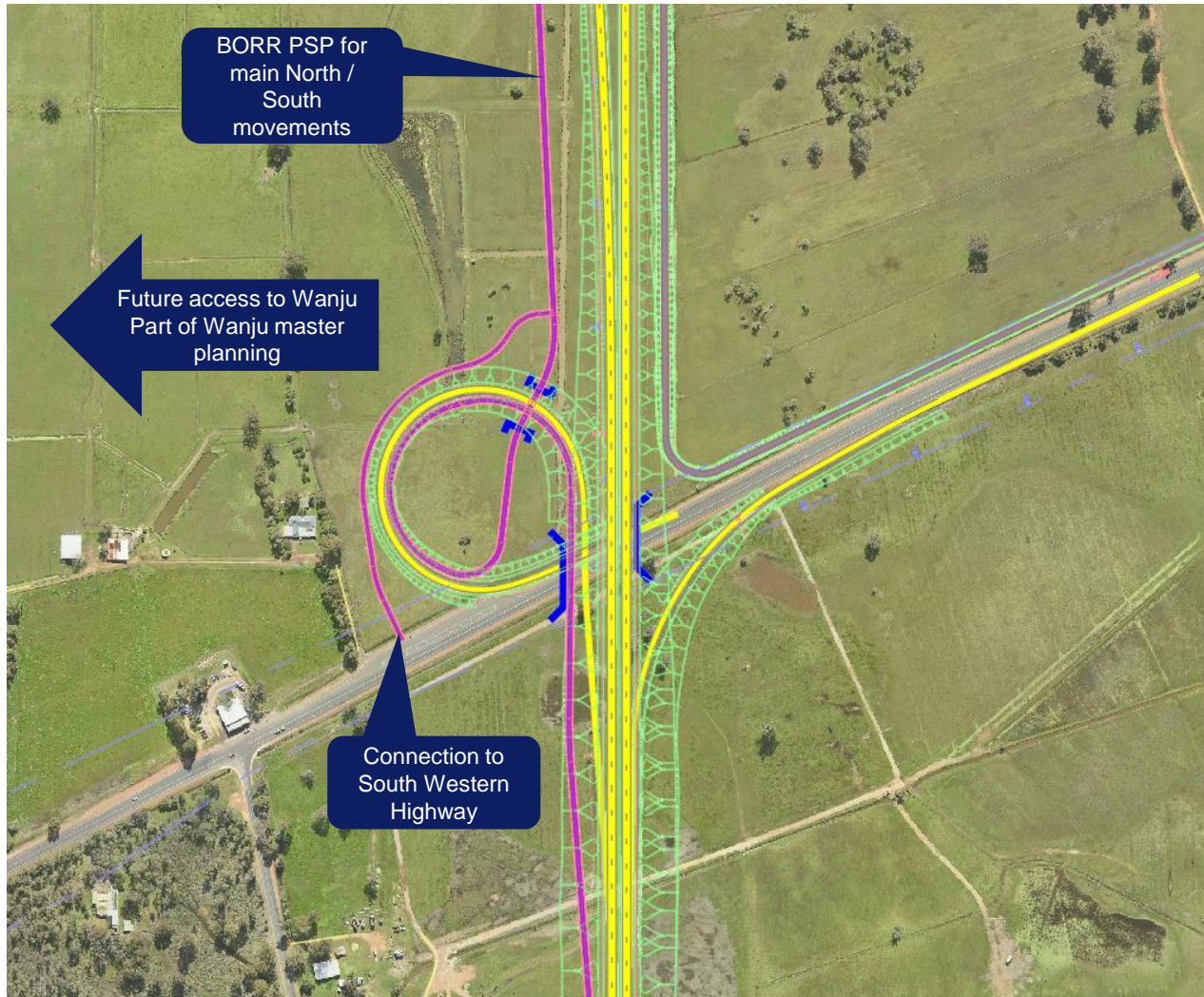
Raymond / BORR Interchange

- Connection allows access to / from the PSP / Raymond Road
- Helps Service Meadow Landing



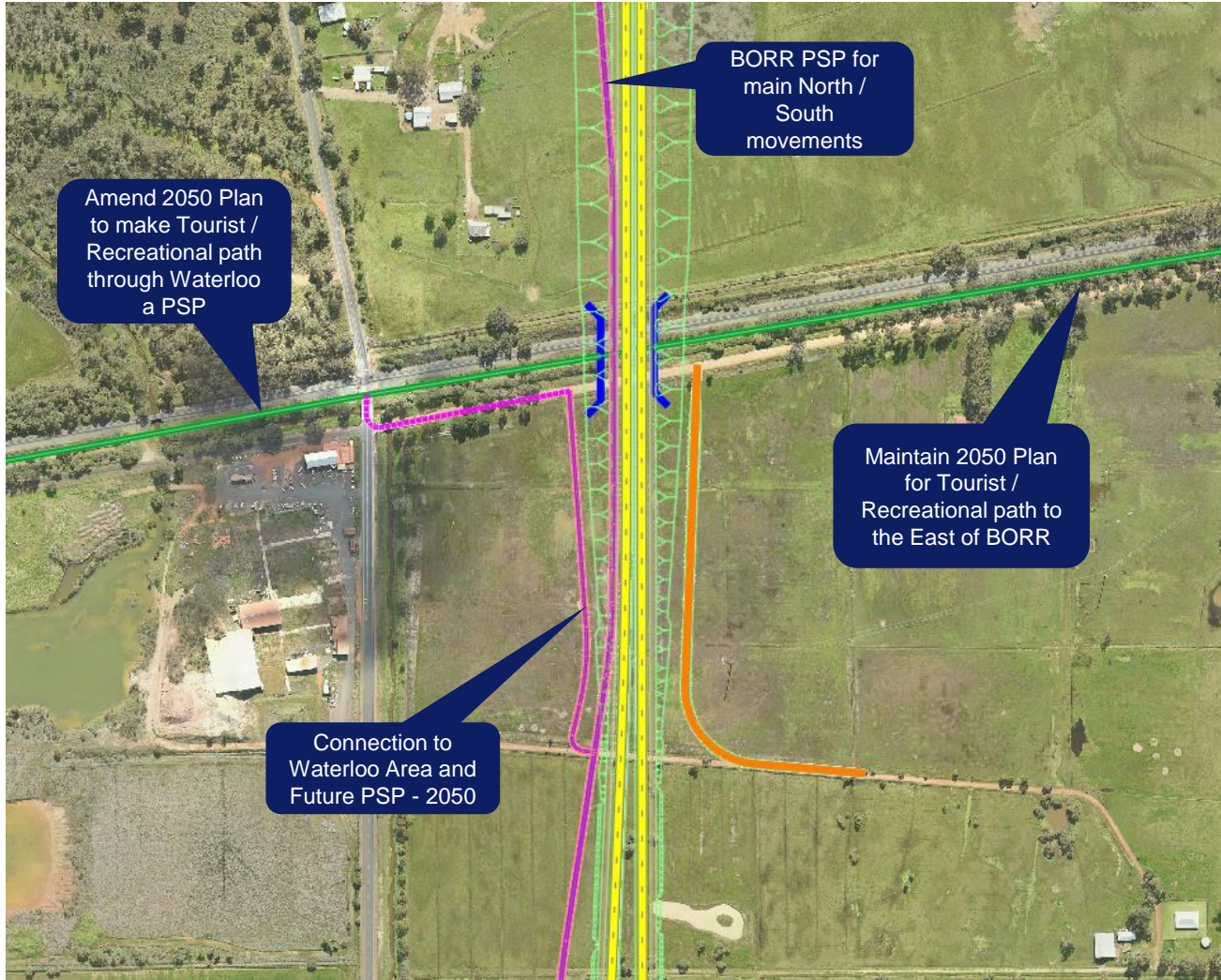
Collie River Crossing

- Future connection as part of the Tourist Path / Recreational Path construction



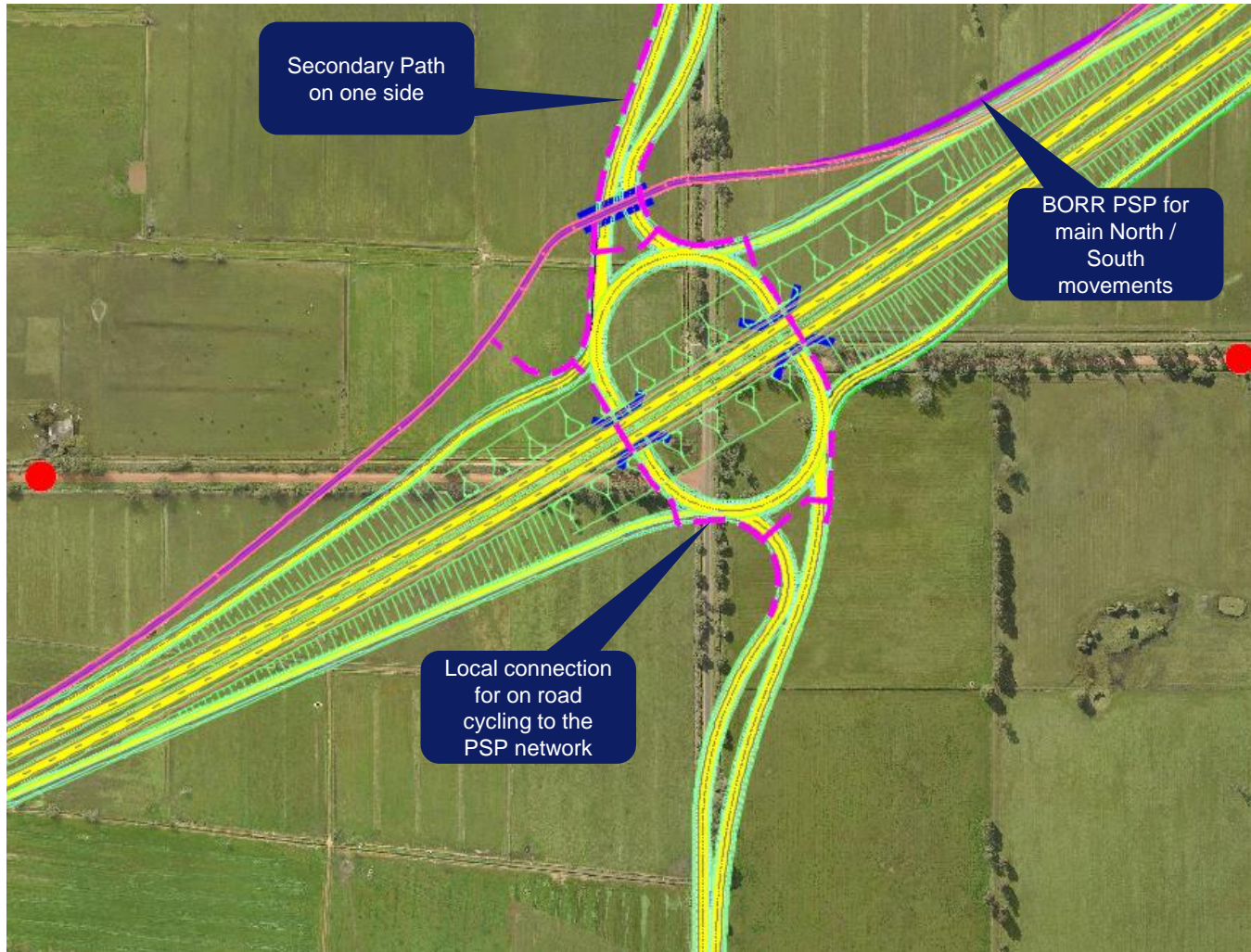
South Western Highway / BORR Interchange

- Connection allows access to / from the PSP / SWH / Wanju Development
- Helps Service Wanju Development
- Grade separated through interchange



BORR / Brunswick Rail Separation

- Connection allows access to / from the PSP / SWH / Waterloo Road
- Helps Service Waterloo Development



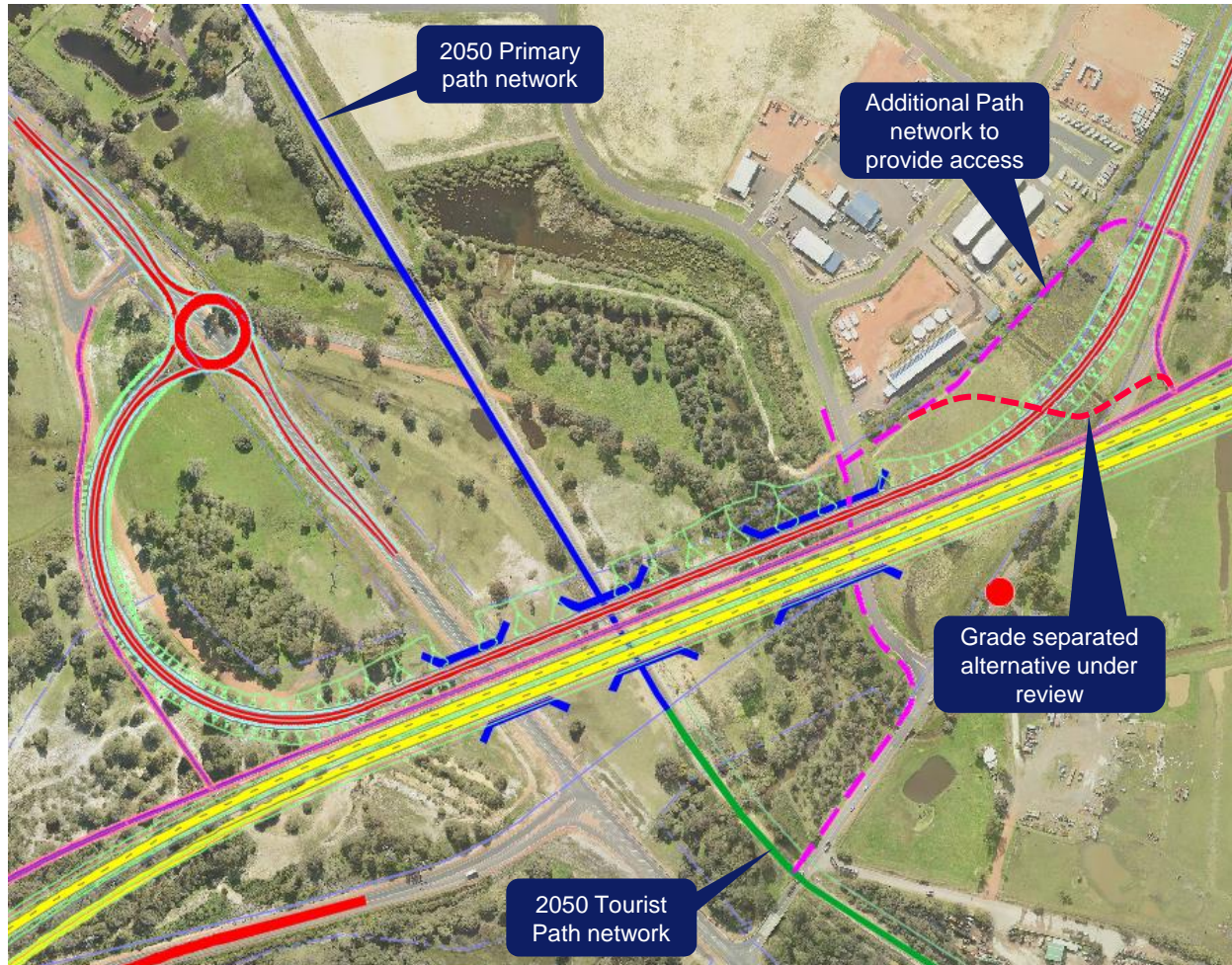
BORR / Waterloo Interchange

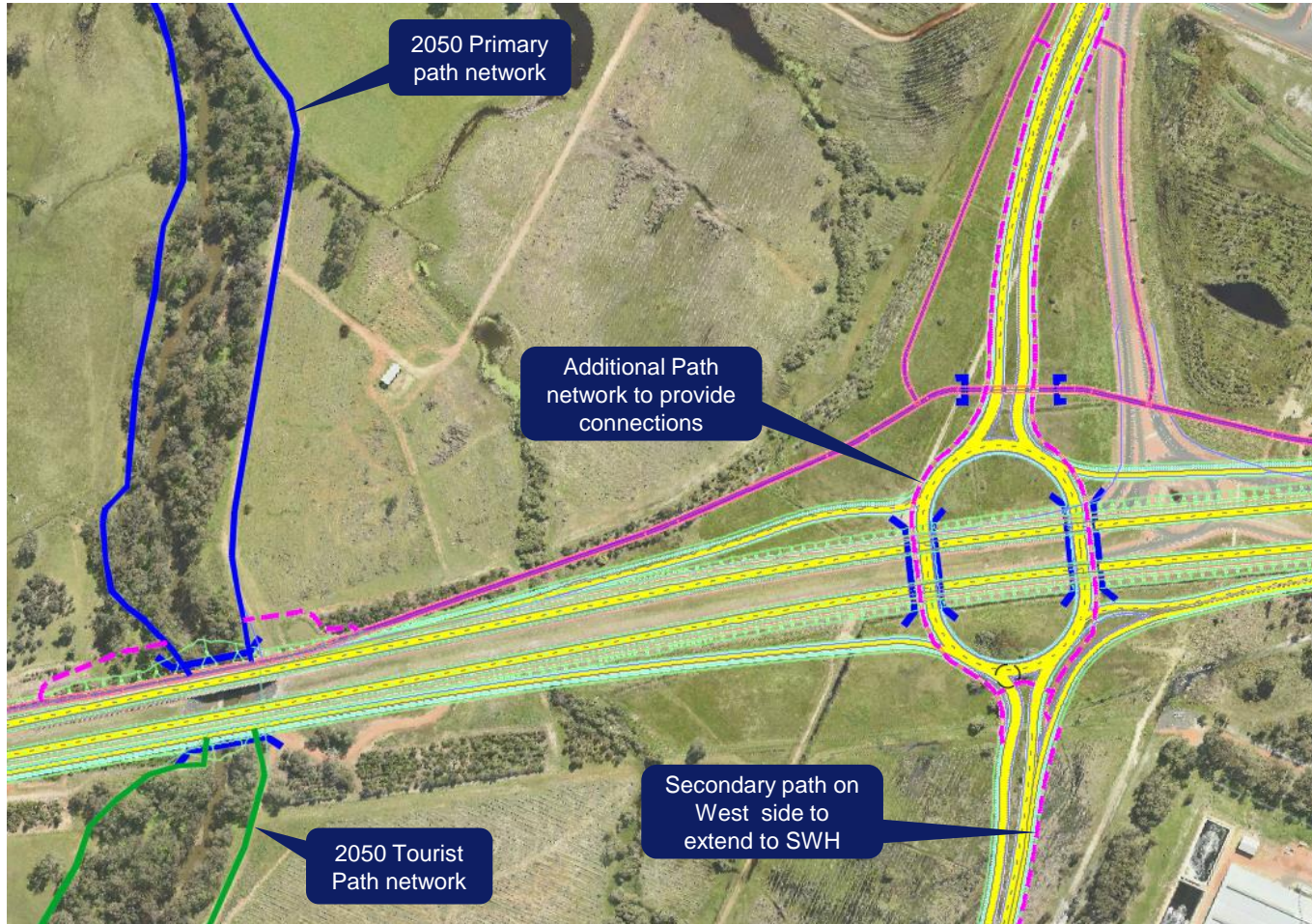
- Helps Service Waterloo Development
- On road cycling network within Waterloo
- Secondary Paths around the roundabout



BORR / Boyanup Picton

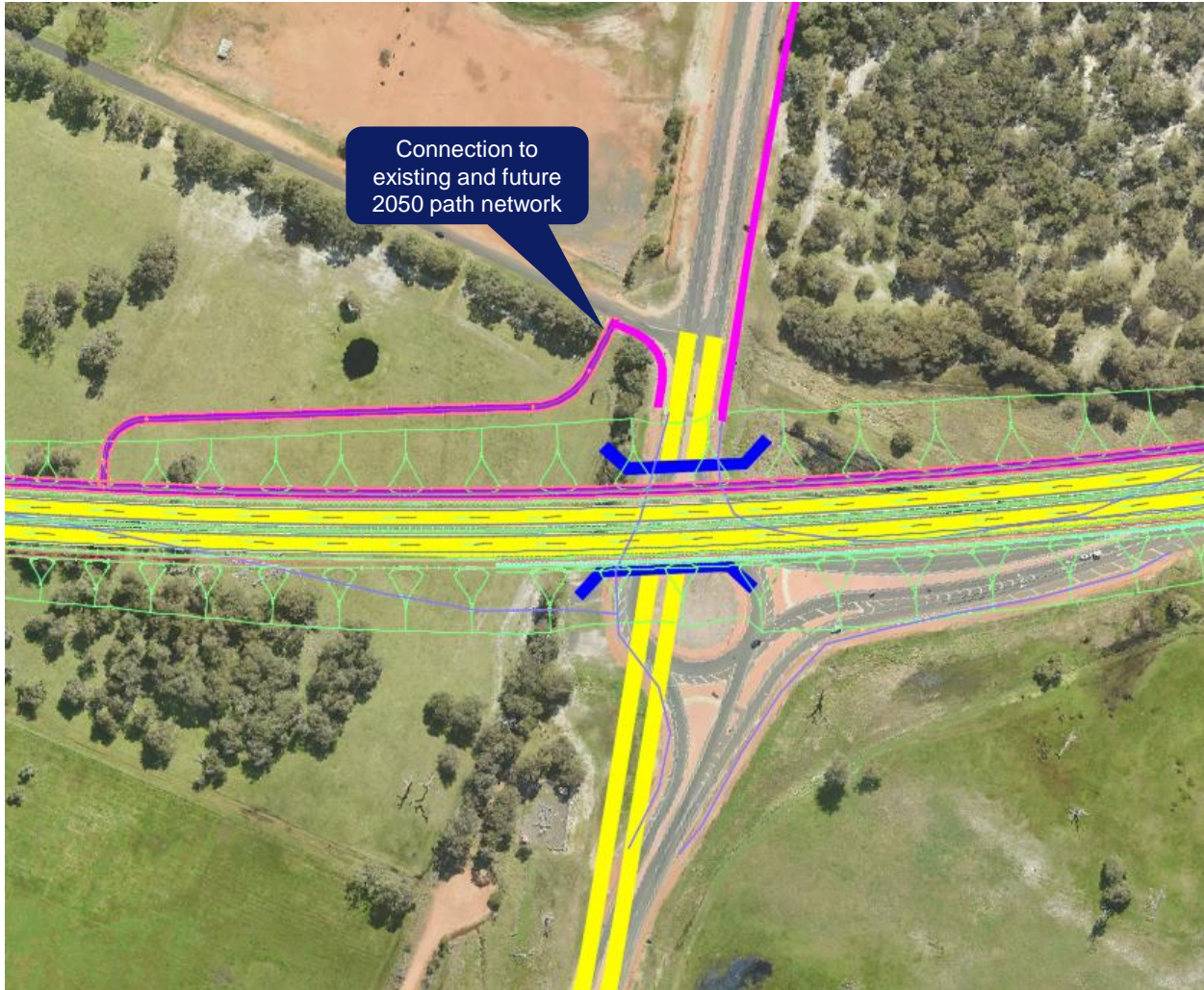
- Access to Picton Industrial Area
- Access to future 2050 network
- Additional path network
- Grade separation of secondary connection





BORR / Willinge Drive

- Connections to primary path network provide southerly connectivity
- Requirement for secondary path on West side of Willinge Drive extension to SWH



BORR / South Western Highway

- Connections to existing paths