



SMART FREEWAYS



Australian Government

BUILDING AUSTRALIA



mainroads
WESTERN AUSTRALIA

Merging made simple

Merge points on our freeways are often busy, making it difficult to join traffic smoothly, which can lead to congestion.

Ramp signals and the introduction of new technology on our Smart Freeways make merging easier and safer.

➤ How does the technology help?

During peak periods it can be difficult to get up enough speed to merge seamlessly into traffic because so many motorists are trying to do the same thing.

This can cause stop-start conditions on our freeways.

That's why we've introduced on-ramp signals on our Smart Freeways. These control the release of traffic on to the freeway ahead.

The on-ramp traffic signals work just like those on suburban roads, only faster. Sensors in the freeway itself constantly measure traffic flow on the freeway and communicate with all the other ramp signals.

The smart technology determines how much traffic can enter the freeway by varying the red signal timings. As the first car travels through the short green period, the lights turn yellow and then red again. Only one car per green per lane is released to the freeway each time. This keeps the traffic on the freeway flowing.

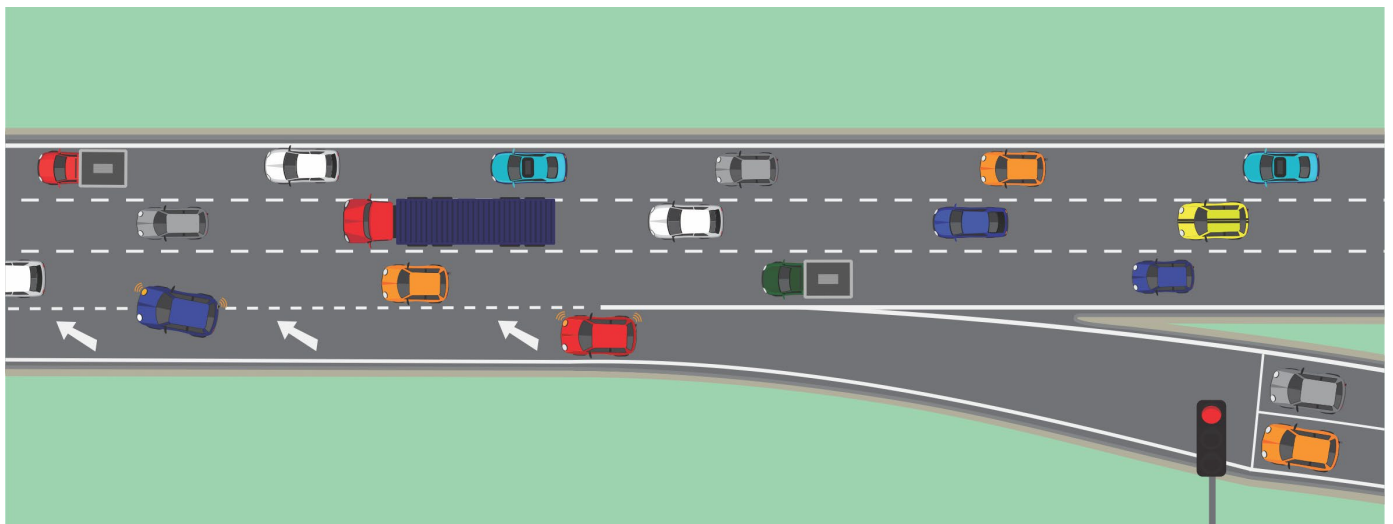
By managing the entry of vehicles on to the freeway, everyone gets a chance to find a gap and merge smoothly into the traffic.

➤ What will I need to do?

Just as you do with all traffic signals, simply stop on red, go on green and prepare to stop on yellow. The timing of the signals is designed to give each vehicle enough space to get up to the proper merging speed as they join the freeway.

Further information

For more information about Smart Freeways and how they work in Western Australia visit mainroads.wa.gov.au



Search Smart Freeways at mainroads.wa.gov.au