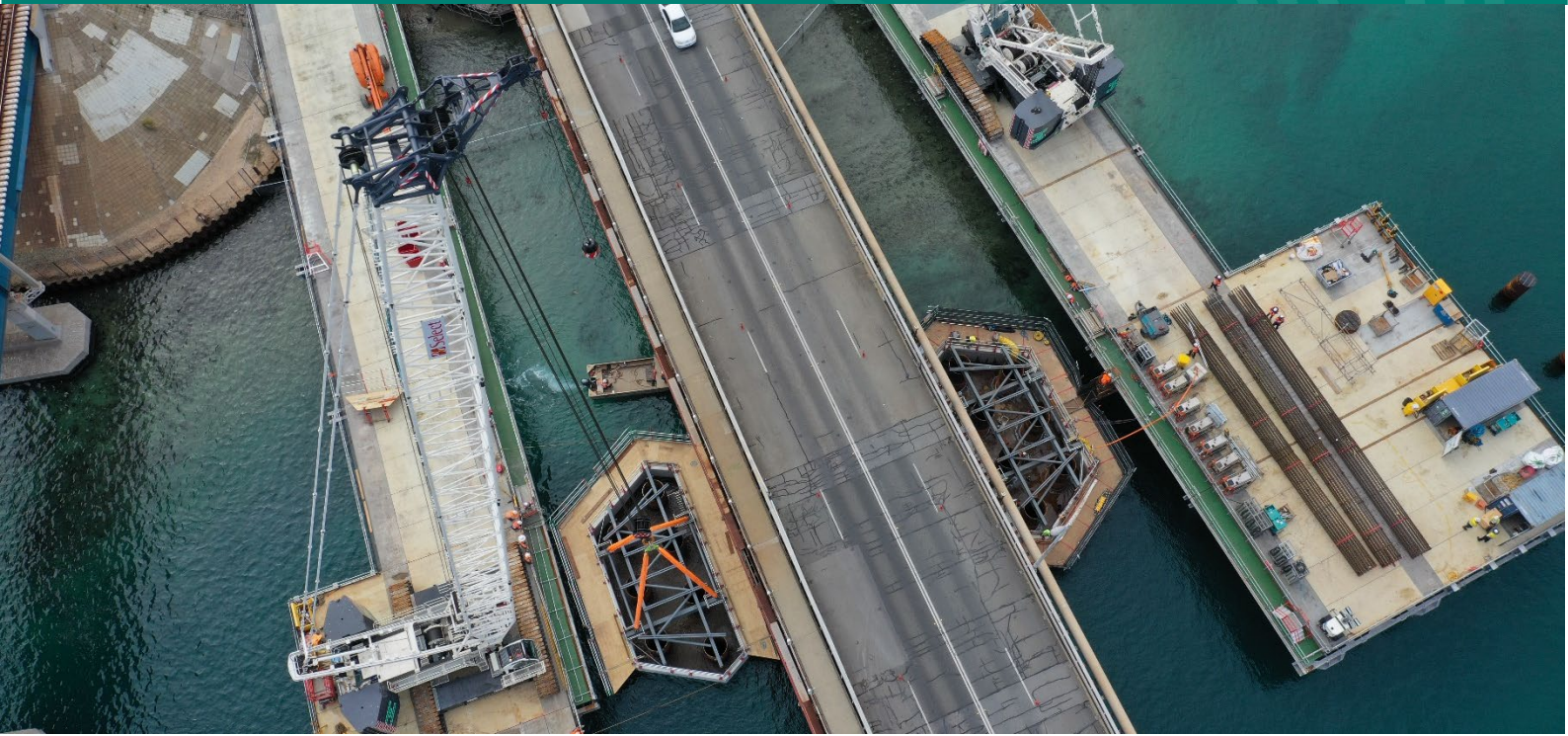


# Swan River Crossings

## Fremantle Traffic Bridge



### Key community feedback after bridge closure announcement

Since announcing the traffic bridge closure and associated road network changes planned for early 2026, we've increased our engagement with the community to help people understand the changes and how they may affect journeys in and around Fremantle.

Engagement activity includes:

- Visiting local businesses in North Fremantle.
- Hosting pop-ups at various locations, speaking to over 180 people so far.
- Letterbox drops of printed materials to selected areas in North Fremantle and Fremantle.
- Emails to over 1,200 organisations, including Fremantle businesses, Local Governments, community and precinct groups, sporting clubs and schools.

This engagement has resulted in at least a 600% increase in visits to the project webpage. We've received several important questions from the community, with the three key themes listed below.

#### *Will you upgrade pedestrian crossing points?*

Yes. As part of the intersection modification works related to the bridge closure, upgraded pedestrian and cyclist crossing facilities will be installed at the Stirling Highway / Canning Highway and Stirling Highway / Marmion Street intersections.

### *Will there be additional public transport during the closure?*

Public transport capacity in and around the project area is currently being assessed. Key considerations include:

- Local bus routes and train service frequency.
- Parking assessments at Fremantle and North Fremantle Train Stations.
- Working with community and schools to develop active transport plans.
- Determining behaviour change opportunities.
- Working with freight industry to determine opportunities outside of peak period operations.

More information about these initiatives will be shared with the community in coming months.

### *Will you upgrade the Stirling Bridge path?*

No. Significant modifications to the Stirling Bridge were not considered viable for a short-term path detour and would require extensive planning, design and construction.

### **Construction Update**

All four pile cap shells are now installed on the new Fremantle Traffic Bridge. Current work includes installation of steel reinforcement cages that sit inside the pile caps shells. Construction of bridge towers is also underway, and once complete, these will reach a height of approximately 35 metres above the waterline.

### **Business Workshops**

The Fremantle Bridges Alliance (FBA), Main Roads, Small Business Development Corporation (SBDC) and the Fremantle Chamber of Commerce are running workshops in June to support local businesses during the traffic bridge closure in early 2026. These sessions are designed to help business owners navigate the disruption and keep their businesses on track. The first workshop is on **Thursday, 19 June 2025, from 4:00 PM to 6:00 PM**. Registrations are essential – please visit: [Bridge Closure Business Workshop — Fremantle Chamber Of Commerce](#).

We are also organising a workshop for North Fremantle and East Fremantle businesses, so please contact us if you are interested.

### **Improving Local Footpaths**

In response to community feedback regarding the existing footpath at the East Street and Canning Highway intersection, we've built a new 3-metre-wide shared path behind the existing bus stop. This significantly improves safety and accessibility for pedestrians and cyclists along Canning Highway.

### **Community Pop-Up Engagement**

We will be out and about in the coming weeks at various locations including farmers markets, local businesses and shopping centres. Every Tuesday they will be based at **Walyalup Civic Centre from 8:30am to 4:30pm until 1 July 2025**. We encourage anyone interested to come along for a chat with our friendly team!

### **Further Information**

Click [here](#) to learn more about the Project or scan the QR code.

To sign up for Project Updates, click [here](#). For enquiries, please phone 138 138 or email [enquiries@mainroads.wa.gov.au](mailto:enquiries@mainroads.wa.gov.au).



Figure 1: New shared path on Canning Highway (behind bus stop).

