



Australian Government

BUILDING AUSTRALIA



mainroads
WESTERN AUSTRALIA

PROJECT UPDATE

June 2026

Swan River Crossings

Fremantle Traffic Bridge

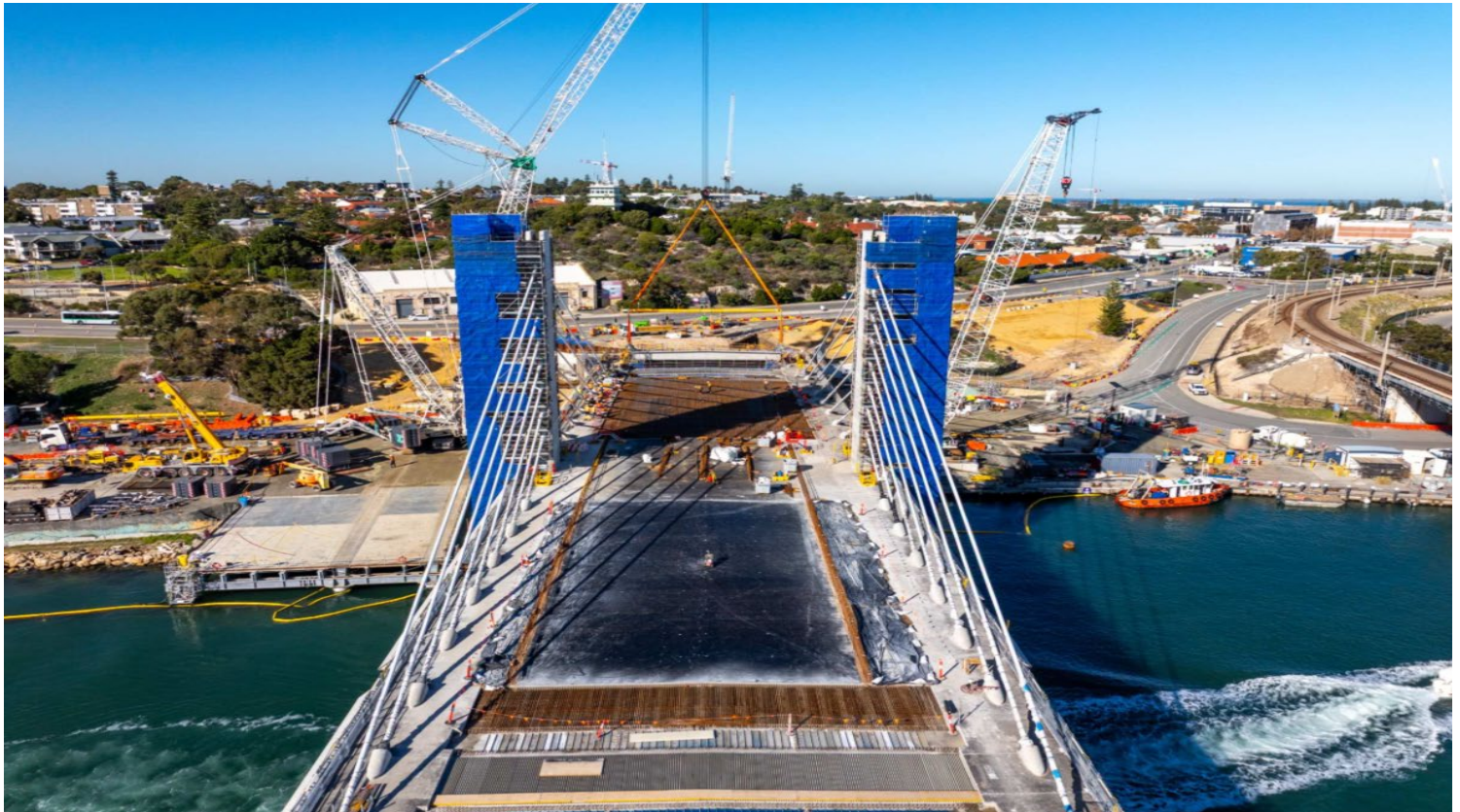


Figure 1: All beams installed on the new Fremantle Traffic Bridge.

All 46 Beams Installed on New Bridge

On 11 June, 2026, the final T-Roff beam was installed on the southern end of the new bridge, marking a major project milestone. Despite major logistical challenges and space constraints, the beam installation program has been achieved on-time, paving the way for road construction works.

Concrete pours for the bridge deck are 80% complete – seven out of nine pours have been achieved, with the final two scheduled for July. Road barrier installation will start in coming weeks, followed by surfacing works, including primer, sealing and asphalt to create the new road. These activities are weather dependent, and rainfall may impact timing of some construction work.

In recent months, 128 of 192 pre-cast bridge parapets have been installed on both sides of the bridge. Parapets are structural edge elements that extend along the full bridge alignment, including abutments, and create a curved look. The parapets include an exposed aggregate finish to create an architectural feature.

Our keen bridge watchers will also notice the 36 metre bridge towers are being unveiled as the blue temporary scaffolding is being progressively removed. The scaffolding is no longer needed as workers can access all bridge areas from the northern and southern abutments.

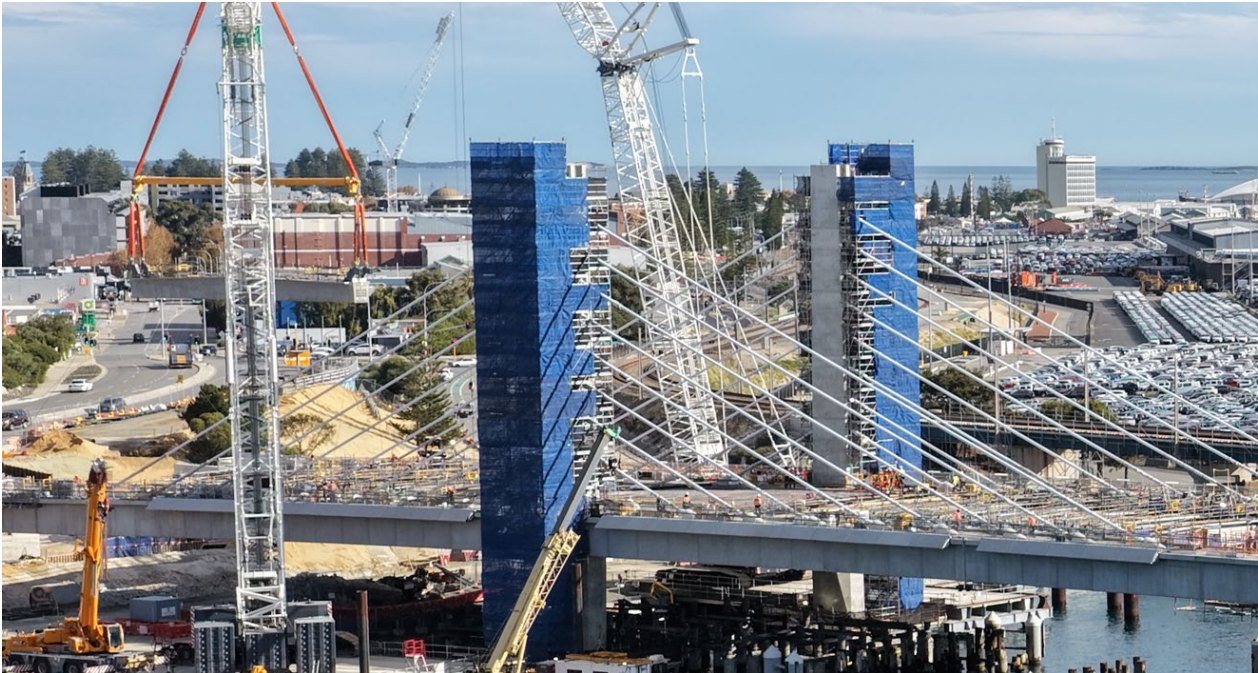


Figure 2: Parapet installation underway on the segments and scaffolding on the towers.

Bridge and Temporary Jetties Removal Update

Removal of the old bridge continues to make good progress, with completion expected by August 2026. Removal of the bridge deck, upper piers (above water) and bridge abutments (north and south) is complete, allowing earthworks to start in both areas.

Approximately 46% of underwater piles have also been removed. The navigation channel is now wider with all middle section piles removed, making vessel navigation easier. The remaining underwater piles on the northern and southern sides are expected to be removed by August. All temporary jetties and cranes on the west side of the bridge (in the port area) have been dismantled. This will be followed by removal of the jetties on the eastern side of the bridge. Removal of the final jetty is expected by the end of September 2026.

Please be aware that intermittent, in-river vibratory piling is underway from **Monday to Saturday 7am to 7pm** to extract the temporary piles that support the jetties. This process generates noise, which is amplified underwater, so exclusion zones apply to swimmers and passive craft users, including kayakers and stand-up paddle boarders.



Figure 3: Navigational Channel opens up as underwater piles removed.

Urban and Landscaping Design on the southern side of the bridge

In coming months, the southern side of the bridge will start to come to life as construction of the terraced retaining walls begins as part of the project's urban and landscaping design. The terrace design and nearby spaces will acknowledge local heritage and support future use of the area. We will create a place for families to access and enjoy the foreshore, while strengthening the connection between the river and Cantonment Hill.

Foundations have been excavated, and terrace construction using limestone blocks will follow. Students from primary schools north and south of the bridge will join us in the final stages to plant native plants they propagated last year. To help the community understand the vision behind the landscaping, public art and cultural elements, a series of fact sheets will soon be released outlining the design principles and the stories that have guided them.



Figure 4: Artist impression of terracing on the south side of the bridge.

School Engagement - Your Move Leadership Labs

Last month, we assisted the Department of Transport and Major Infrastructure (DTMI) with the *Your Move Leadership Lab* - a two-day program that brought together Years 4-6 students from six local primary schools to design creative initiatives that encourage active travel within their school communities. We supported the event by running a tailored workshop focused on active transport and how the new Fremantle Traffic Bridge will improve walking and cycling connections in the area. Held in North Fremantle, students were encouraged to explore barriers and enablers for active transport on day one.

On the day two, the students refined their ideas and pitched them to a panel of transport industry professionals. It was fantastic to hear the great ideas from future network users which were thoughtful, imaginative and enthusiastic. The event showcased how engaged young people are in shaping a safer, more active future for their community. To learn more about this initiative, click [here](#).



Figure 5: Children from schools local to Fremantle taking part in the "Your Move Leadership Labs".

New Rigging Pathway Delivers Strong Success

The project is breaking new ground with what is understood to be one of the first Aboriginal focused Rigging Traineeship pathways in Australia's construction sector.

Four of the five new rigging trainees are Noongar, and all are progressing exceptionally well with four completing their studies in early May. The fifth trainee, who joined the cohort later from a labouring pathway, is expected to finish soon.

The program is supported across the project, with leaders praising the trainees for their enthusiasm, commitment, and daily growth as they work towards completing their Certificate III in Rigging.



Figure 6: Five trainees involved in our Rigging Program.

Further Information

Click [here](#) to learn more about the Project or scan the QR code.

To sign up for Project Updates, click [here](#).

For enquiries, please phone 138 138 or email enquiries@mainroads.wa.gov.au.

