

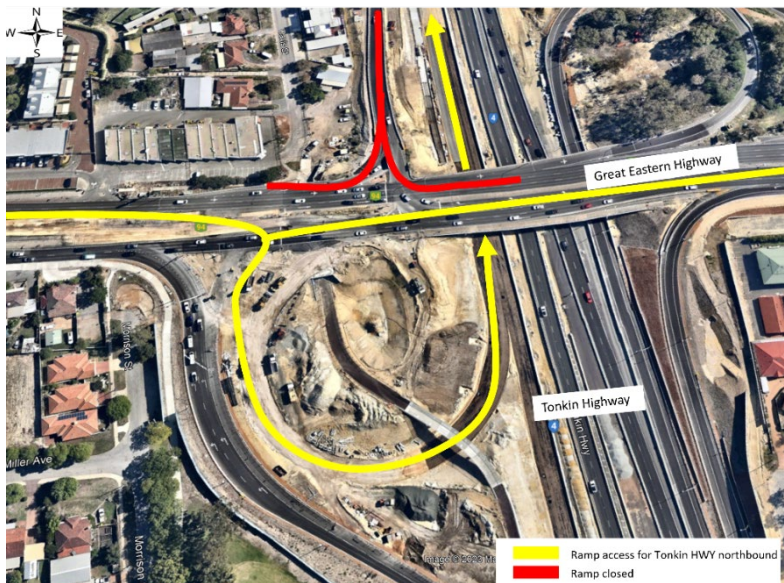
Tonkin Gap Project and Associated Works

Construction Update

This update contains important information about upcoming works near you. Works below are anticipated from June but are subject to change. Some works will need to be undertaken on Sundays. Please drive carefully and observe the road signage. There is potential for longer than usual travel times and we encourage road users to plan ahead. Up to date information will be available through the Main Roads website and our Tonkin Gap Facebook page. If you have any concerns during the works, please call 138 138 (24 hours).

Modified Tonkin Highway northbound ramps from Great Eastern Highway

The next stage of the Great Eastern Highway upgrade is about to start. In mid-June we will be activating the new loop ramp from Great Eastern Highway to Tonkin Highway northbound and temporarily closing the existing northbound on-ramp. This means that if you are travelling eastbound on Great Eastern Highway you will turn right onto the loop ramp to head north on Tonkin Highway, and if you are travelling westbound you will turn left to head north on Tonkin Highway (Map 1).



To implement these changes there will be night works and modifications to the existing traffic signals, water blasting and traffic barrier works. We will also be reducing traffic to two lanes in each direction between Lyall Street and Boulder Street.

Once traffic is using the new loop ramp there will be earthworks and asphaltting along Great Eastern Highway to upgrade the lanes. Intermittent night works will be required. There will be noise, vibrations, and dust during the works. Please plan ahead if you are using Great Eastern Highway and visit the Main Roads website and Tonkin Gap Facebook Page for details on night works, ramp closures and specific dates of the works.

Map 1 - Loop ramp activation

Great Eastern Highway eastern footpath closed

There will be temporary modifications to the path network at the intersection of Kanowna Avenue West and Great Eastern Highway in June. This will allow the team to complete roadworks on Great Eastern Highway as part of the permanent alignment. Keep an eye out on closure details and the detour route on our Facebook page and website.

Great Eastern Highway directional signage installation

In late-June we will be installing overhead directional signage on Great Eastern Highway eastbound before Tonkin Highway. To complete these works we will need to implement lane and ramp closures over two nights in late-June. Keep an eye out on closure details and the detour route on the Tonkin Gap Facebook page and Main Roads website.

Traffic changes between Dunreath Drive and Guildford Road

Guildford Road restricted access

You may have noticed that traffic from Great Eastern Highway to Tonkin Highway northbound has been switched on to the new Redcliffe Bridge. Until late-June, traffic on the Tonkin Highway main carriageway will not be able to exit at Guildford Road while we complete pavement works adjacent to the ramp. The detour will be in place for the duration of these works. However, if you are travelling from Great Eastern Highway heading north, access to Guildford Road remains.

New Redcliffe Bridge will open to Tonkin Highway northbound traffic soon

Pavement works continue for the northbound Collector-Distributor Road (CD road) that runs between Stanton Road and Guildford Road. A CD road separates highway through traffic from other vehicles that are entering or exiting the highway. Asphalt works for the CD road are expected to be complete mid to late-June and once complete, all traffic travelling on Tonkin Highway northbound will be switched onto the new Redcliffe Bridge so the team can start rebuilding the existing northbound lanes. As a part of this traffic switch, Tonkin Highway southbound will be realigned, moving traffic further to the west. The number of lanes on Redcliffe Bridge remain the same during this traffic stage.



New lanes over Redcliffe Bridge

Tonkin Highway southbound off-ramp to Great Eastern Highway

The realignment and construction of the new Great Eastern Highway southbound off-ramp from Tonkin Highway is in its next stage of works. In May we installed posts for the noise walls and will be installing concrete panels throughout June. There will be intermittent night works during the month to complete asphaltting, line marking, water blasting, and barrier relocation works.

Victoria Street pedestrian bridge screens

This month we plan to remove the temporary screens on Victoria Street pedestrian bridge and replace these with the permanent screening. When we complete this work there will be pedestrian management on the bridge and lane and ramp closures on Tonkin Highway. Stay informed on our website and Facebook page.

Guildford Road realignment

This month we plan to realign the Guildford Road Principal Shared Path (PSP) under Tonkin Highway. While the team completes these works you may notice slight changes to the PSP and road alignment on Guildford Road.

Asphalt and barrier work continues at night

Asphalting and barrier works will continue at night at various locations across the project. There will be lane and ramp closures. While asphalting there may be noise, vibrations and you may notice a diesel-like smell when we apply the prime which is the initial treatment layer. Some locations where we will be asphalting across June:

- Tonkin Highway southbound off-ramp to Great Eastern Highway
- Tonkin Highway between Stanton Road and Guildford Road
- Tonkin Highway between Dunreath Drive and Great Eastern Highway
- Great Eastern Highway between Lyall Street and Tonkin Highway
- Guildford Road eastbound under Tonkin Highway
- Benara Road near Mahogany Drive
- Broun Avenue and Embleton Avenue
- Tonkin Highway southbound under Broun Avenue Bridge

METRONET Morley-Ellenbrook Line

The Tonkin Gap Alliance team has been busy building the METRONET Morley Station and Noranda Station platforms, northern and southern dive structures, Broun Avenue bus interchange bridge and getting the median of Tonkin Highway ready for the METRONET Morley-Ellenbrook Line. The MELconnx Alliance team will now commence works in these areas to continue works for the project. This will include site establishment, services and drainage works.

Morley Station

Broun Avenue and Embleton Avenue intersection upgrade

The third stage of the Broun Avenue and Embleton Avenue intersection upgrade works started in May, which involved lengthening the Broun Avenue eastbound left-turning pocket and upgrading the northern half of the intersection. Works for the intersection upgrade will continue this month as we start clearing, drainage and pavement works to construct the northwest turning pockets. Watermain relocation works continue, with the cutover to the new service to occur in June. There will be some water outages, properties affected will be communicated with by Water Corporation and the project team closer to the date. As we build the new pavement, we will be using a roller to compact the ground which will cause vibrations. If you have any concerns during this work, please call 138 138. Traffic and pedestrian restrictions remain in place, to view the impacts and detour maps head to our website and project Facebook page.

Noranda Station

Noranda Station car park

In May we completed the initial roadworks for the access road that will eventually connect the Noranda Station carpark to Benara Road. Asphalting and sealing the access road will take place this month, as well as installation of further underground storm trap units, retaining walls and drainage works for the car park. As we progress these works there will be bulk excavation and backfilling required. Some of these works will be noisy, and you may feel vibrations. We apologise for any inconvenience.

Benara Road underpass and roadworks

The Benara Road underpass is taking shape, with the segments on the northern side and backfill works complete. We will now continue to rebuild Benara Road above the northern side of the underpass. Once this is done, the team can start work on the southern section of the underpass. This will require us to switch traffic to the southern half of Benara Road, with traffic remaining one lane in each direction until late 2023. To implement this traffic switch we will close Benara Road between Della Road and Mahogany Road for one night in late June. Further information will be provided via the project website and Facebook page.



Noranda Station carpark storm traps.

Tonkin Highway between Collier Road and Benara Road

By late June Tonkin Highway between Collier Road and Benara Road will return to three lanes in each direction. The speed will remain 80km/h as there are ongoing construction works for the Morley-Ellenbrook Line. While it might appear there are no works occurring it is very important to limit speed to 80km/h to allow trucks and workers to enter and exit the median work area safely. Thank you for your patience while the lane reductions were in place. It has allowed us to complete important upgrade works.

Water blasting

We will be completing water blasting works at Tonkin Highway in both directions between Benara Road and Stanton Road; Great Eastern Highway between Boulder Avenue and Lyall Street; and Benara Road between Tonkin Highway and Mahogany Drive. A water blasting machine is used to remove old line markings and this equipment can be noisy. Water blasting works must occur at night as we need to implement various lane and ramp closures.

Wet weather

In the winter months, cold temperatures and wet weather can unfortunately impact the timing of our works. There are certain activities that can only be completed during warm, dry conditions. These activities include line marking and asphaltting. Depending on the weather conditions we may need to reschedule works or complete works on a weekend or at night.

Ongoing roadworks along Tonkin Highway

We are continuing works on Tonkin Highway between Dunreath Drive and Marshall Road. We will have lane and ramp closures at night in various locations on Tonkin Highway during the month. There will be some noise, vibrations, and dust. Stay up to date on the Tonkin Gap Project 'Roadworks' section on the Main Roads website and the Tonkin Gap Facebook page for details.

Out of hours works this month

In June our crews will be working at night (7pm until 7am) in our project area and along Tonkin Highway between Dunreath Drive and Hepburn Avenue. A summary of the works is below.

- Tonkin Highway under Victoria Street Bridge
 - Screen replacement works
- Tonkin Highway southbound under Broun Avenue Bridge
 - Asphaltting
- Benara Road between Della Road and Mahogany Drive
 - Water blasting, barrier works and line marking
- Tonkin Highway between Great Eastern Highway and Dunreath Drive
 - Line marking, water blasting and barrier works
- Guildford Road and Railway Parade bridges
 - Water blasting, line marking, barrier works and lane and ramp closures
- Great Eastern Highway between Lyall Street and Tonkin Highway
 - Asphaltting, barrier works, line marking, water blasting and lane and ramp closures

What can I expect?

- Our work activity and vehicle movements may be noticeable across all areas. Noise and vibration management measures are in place, including use of the quietest equipment reasonably available.
- High noise level equipment will be located away from residential areas, and noisiest activities scheduled to take place earlier in the night. Work will be in accordance with a noise management plan approved by your local government authority. If you have concerns, please call 138 138 (24 hours).

For more information on Tonkin Gap

W: <https://www.mainroads.wa.gov.au/tonkin-gap/>

E: enquiries@mainroads.wa.gov.au

T: 138 138 (24 hours)

FB: <https://www.facebook.com/groups/tonkingap/>

For more information on the Morley-Ellenbrook Line

W: www.metronet.wa.gov.au

E: info@metronet.wa.gov.au

T: 08 9326 3666

FB: <https://www.facebook.com/groups/morley.ellenbrook>