



Australian Government

BUILDING AUSTRALIA



mainroads
WESTERN AUSTRALIA

Project Update
May 2026



Mandurah Estuary Bridge Duplication

Residents and road users have strongly welcomed the completion of the Mandurah Estuary Bridge Duplication project, with feedback highlighting improved traffic flow, better connectivity and valued community features.

The new bridge opened to traffic on 3 February 2026, allowing westbound traffic to move onto the new structure while repairs and upgrades were carried out on the existing bridge.

Major works were completed at the end of March 2026, with the existing bridge moving into its final configuration and two eastbound lanes opening to traffic.

With traffic now operating across both bridges, the crossing is providing improved capacity and more reliable journeys for the estimated 33,000 vehicles that use it each day. Landscaping works are expected to be completed by winter.

New community features now open

The project has also delivered a range of community and recreational improvements, including programmable lighting on both bridges, a new four-metre shared path under the new bridge, upgrades to the existing path under the original bridge, and a new all-abilities fishing

platform. Please note that the existing fishing platform remains closed for safety reasons.

More than three kilometres of new noise and amenity walls have also been installed, along with yarning circles and public artwork on both foreshores.

Community celebrations

The project's completion was officially marked on Sunday, 3 May 2026, with a community picnic at Waterside Reserve in Dudley Park.



Around 900 people attended the event, which included free food and drinks, roving entertainment, children's fishing competitions, face painting and formal proceedings to thank nearby residents and the broader community for their patience and support during construction.

A Welcome to Country was delivered by Aboriginal Elder George Walley. Deputy Premier and Minister for Transport Rita Saffioti unveiled the commemorative project plaque, joined by local MLAs Lisa Munday and Rhys Williams. The new programmable feature lighting was also presented to the community at sunset.



The Office of Major Transport Infrastructure Delivery Managing Director Leo Coci, MLA Lisa Munday, Premier Roger Cook, Deputy Premier Rita Saffioti, MLA Rhys Williams and Georgiou Group's Simon Welfare officially open the new Mandurah Estuary Bridge.

My Say Survey Feedback

Stakeholders and residents were invited to provide feedback through the Project's My Say Survey, with 119 responses received.

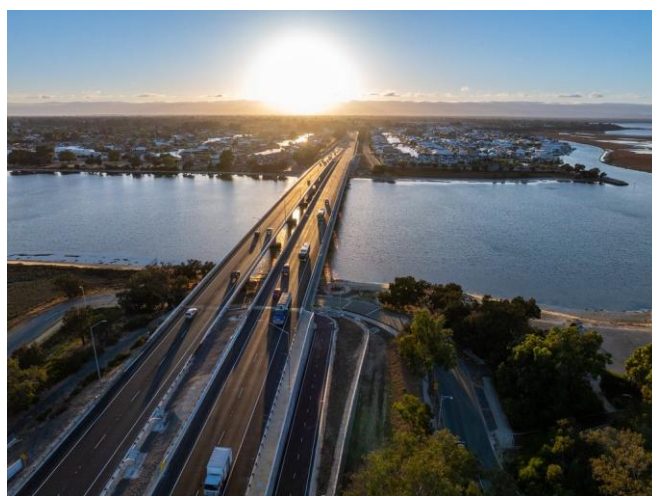
Overall sentiment was positive, with most respondents indicating they were happy, very happy or extremely satisfied with the project outcome.

The project was widely viewed as long overdue and delivering clear benefits for the community, particularly in relation to traffic efficiency, safety and the overall appearance of the estuary crossing.

Project communications were also rated highly, with respondents noting the frequency and timeliness of updates, the use of multiple channels, and clear advance notice of closures, detours and night works.

New features such as the accessible fishing platform, ACROD bays, shared paths, improved connections and feature lighting were also widely valued.

Overall, the project is broadly seen as well constructed, visually improved and a significant upgrade on the previous bridge arrangement.



Further information

Have any questions or feedback? Get in touch via the options below.

W: <https://www.mainroads.wa.gov.au/projects-initiatives/all-projects/regional/mandurah-estuary-bridge-duplication/>

E: enquiries@mainroads.wa.gov.au

T: 138 138