



Australian Government

BUILDING AUSTRALIA



mainroads  
WESTERN AUSTRALIA

PROJECT UPDATE  
MAY 2026

## Stephenson Avenue Extension Project (Phase 2)



**This update contains information regarding the current and future works happening on the Stephenson Avenue Extension project. Information in this update is current as of May 2026 and is subject to change. For the most recent updates visit the Main Roads Stephenson Avenue Extension website.**

### Stephenson Avenue Interchange fully operational

In early April 2026, the Stephenson Avenue northbound on-ramp opened to traffic and is now the primary access point to Mitchell Freeway northbound in the area, improving connectivity for people travelling in Perth's northern suburbs.

With the opening of the ramp, the Stephenson Avenue Interchange is fully operational, with on and off-ramps connected in both northbound and southbound directions.

Road users can enjoy direct access to Mitchell Freeway from Stephenson Avenue along with improved connections to key destinations including Stirling Station, Osborne Park, Innaloo and the Perth CBD.

The temporary closure of the Cedric Street northbound on-ramp will remain in place until mid-2026 to safely undertake ramp widening and intersection upgrade works.



**Stephenson Avenue Interchange open to road users.**

### Cedric Street closure between Stephenson Avenue and Ellen Stirling Boulevard

We are continuing to progress staged traffic changes along Cedric Street until mid-2026 to allow ongoing works to continue safely, including pavement construction, shared paths and retaining walls.

In late-May 2026, we implemented a temporary closure of Cedric Street between Ellen Stirling Boulevard and Stephenson Avenue.

This temporary closure, anticipated to be in place for approximately four weeks, is required to safely complete pavement construction, drainage, landscaping and signalised intersection tie-in works.

Access for buses and pedestrians will continue to be maintained along Cedric Street during the closure and businesses in the surrounding area remain open and accessible.

A traffic detour will be in place via Stephenson Avenue and Scarborough Beach Road for all other commuters.

Once Cedric Street is closed, we will be working 24/7 to minimise the timeframe the road is closed and therefore disruption to traffic.

There will be signage in place to support these changes, and motorists are encouraged to allow extra travel time and exercise caution while travelling through the area.

Further information, including detour maps, will be provided on the [Main Roads website](#).

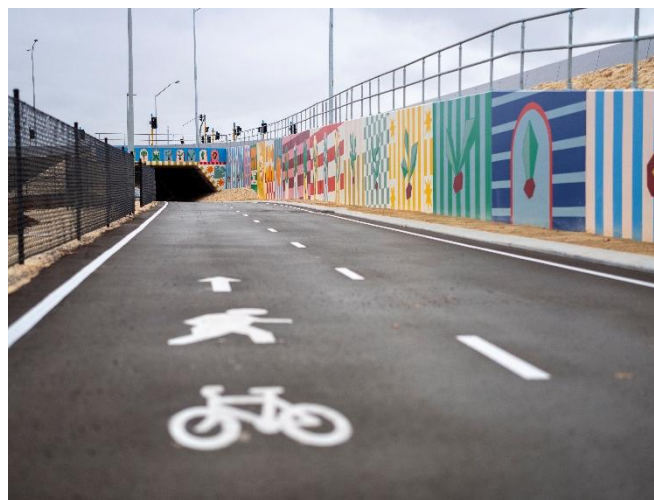
## New PSP link connecting Perth to the northern suburbs

With the recent opening of the new Principal Shared Path (PSP) between Civic Place and Telford Crescent, users can enjoy a fully integrated and connected journey from Perth to the northern suburbs along the Mitchell Freeway.

This upgrade closes a significant missing link in the Mitchell Freeway PSP network, providing a seamless, safe and direct route along the Mitchell



Freeway corridor for Perth's northern suburbs, improving connections for pedestrians, cyclists, eRideable and mobility device users.



**Missing PSP link connecting Perth to the northern suburbs.**

The new 1.4km, four-metre-wide-path also includes a new pedestrian and cyclist underpass with bespoke artwork inspired by the area's market garden heritage, beneath Stephenson Avenue.

Path users can also access Stirling Station via the pedestrian underpass, which provides a direct, and safe connection into the station precinct and car parks.

The local path connection from the PSP to Cedric Street remains closed while finishing works are completed. PSP users can access Cedric Street via Civic Place or Stephenson Avenue.

Wayfinding signage is in place to guide path users and highlight network connections. To view access routes, visit the [Main Roads website](#).

Shared path connections along the northern side of Stephenson Avenue will continue to progressively open, making it easier for path users to walk or ride through the area when complete.

These upgrades are part of a vision to make WA a place where riding is a safe, connected, convenient and widely accepted form of transport.

## New Stirling bus bridge opened

A project milestone was reached recently when the new bus bridge at Stirling Station over Mitchell Freeway opened to passengers on ANZAC Day.

The bridge forms part of the upgrades to the Stirling Station bus interchange, which will increase the number of bus stands from 18 to 29.



### First bus services at the new Stirling Station Bus Interchange.

Transperth passengers can now access Stirling Station via the new 36-metre pedestrian walkway, which provides a safe, weather-protected connection for passengers moving between bus and train services.

All bus services at Stirling Station have been relocated to the new bus bridge while works continue to upgrade the bus stands on the existing horseshoe bridge over the next few months.

For more information on these changes, please visit: <https://www.transperth.wa.gov.au/Service-Updates/Service-Update-Details/stirling-station-service-changes>

## Stirling Station southern car park upgrades progressing

We are continuing to progress upgrade works in the Stirling Station southern car park, with pavement construction currently underway as crews prepare for the next phase of works, including asphaltting, kerbing and line-marking.

Landscaping works will also be undertaken until late-June 2026 and will temporarily impact the availability of some car bays in the southern station car park while crews complete planting and finishing works.

Temporary alternative parking remains available west of the station at 3 Tassels Place, along with the recently reopened car park at 7 Sunray Drive, Innaloo.

The remainder of the southern station car park is anticipated to open in mid-2026 when upgrade works are complete, improving access and the way car park users move through the car park and connect to the station.

## Further information

Are you receiving our notifications? We regularly send out email updates to our subscribers on upcoming works and what's happening on the project.

Sign up for updates by scanning the QR code, or visiting the [Main Roads website](#).



If you have any questions, please contact 138 138 or email [enquiries@mainroadswa.gov.au](mailto:enquiries@mainroadswa.gov.au)

To provide feedback on how we are communicating with you, take our Customer Feedback Survey ([Stephenson Avenue Extension Project - Phase 2 | My Say Transport](#)).