



Albany Ring Road Project



The Albany Ring Road will open to traffic on 19 May 2024

The Albany Ring Road is substantively complete and will open to all traffic on 19 May 2024.

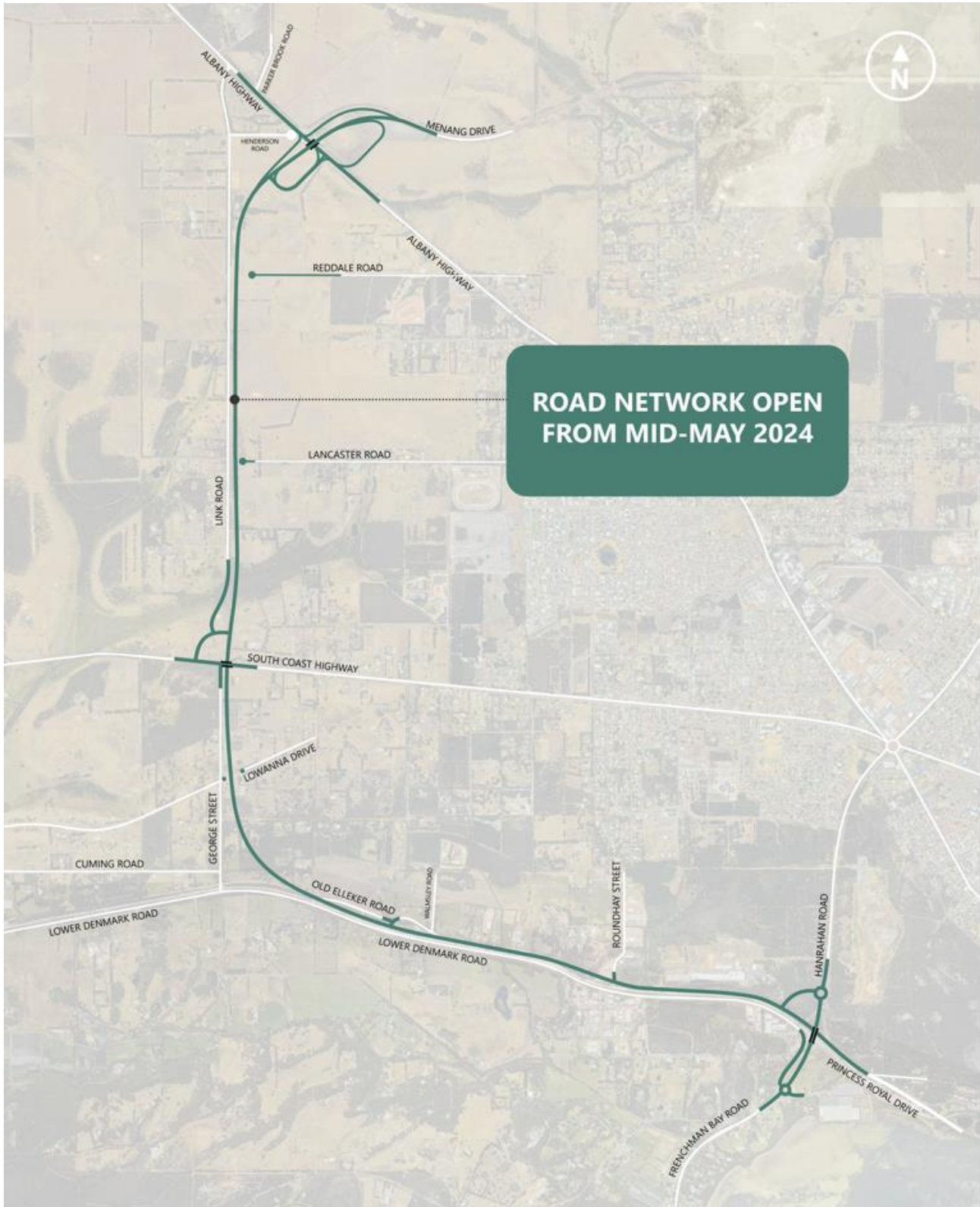
The Ring Road is the biggest road project ever undertaken in the Great Southern Region, delivering a free-flowing, 11-kilometre connection between the original section of Menang Drive east of Albany Highway and Princess Royal Drive, and includes three grade-separated interchanges at Albany Highway, South Coast Highway and Frenchman Bay Road.

From 19 May, the Ring Road will be known as Menang Drive, in recognition of the Menang Noongar people – this area's Traditional Owners.

What the opening means for road users Albany Ring Road (Menang Drive)

From 19 May access between Albany Highway, South Coast Highway and Princess Royal Drive will be available via the Albany Ring Road (Menang Drive). All directional movements will be available at the newly constructed interchanges. The new road network is shown in Figure 1 over the page.

Figure 1: Road network from 19 May 2024



South Coast Highway

Vehicles traveling on South Coast Highway eastbound (towards Albany) will be able to access the Albany Ring Road (Menang Drive) (northbound and southbound) by turning left just prior to the South Coast Highway bridge.

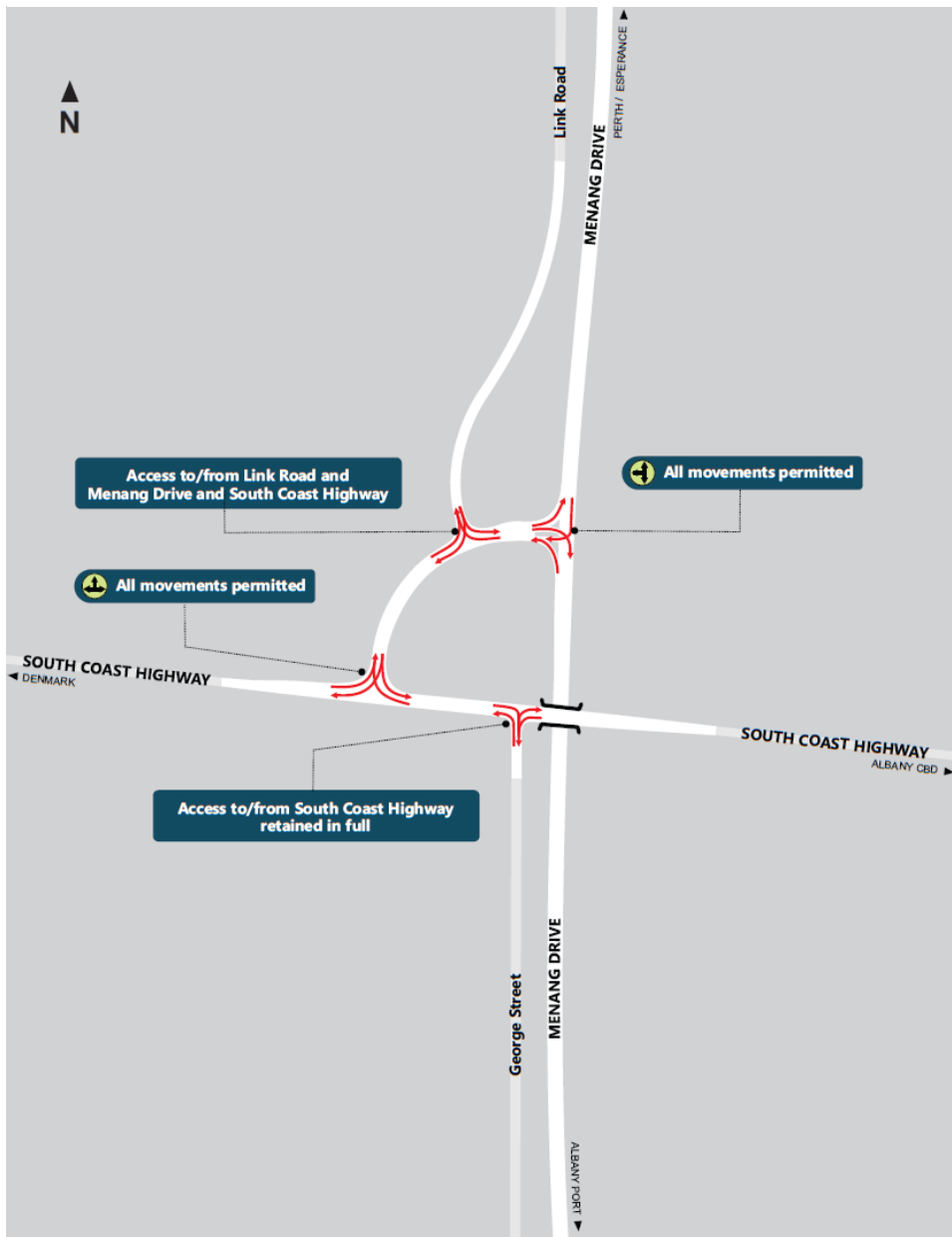
Vehicles travelling on South Coast Highway westbound (towards Denmark) will be able to access the Albany Ring Road (Menang Drive) (northbound and southbound) by turning right just after the South Coast Highway bridge.

Please see Figure 2 for key turning movements at this interchange.

Old Elleker Road and Roundhay Street

Both Old Elleker Road and Roundhay Street will have direct access to and from the Albany Ring Road (Menang Drive) via dedicated intersections. Road users can turn left out of the intersection to travel south towards Albany CBD or right to travel north towards South Coast Highway and Albany Highway.

Figure 2: Traffic movements at the Albany Ring Road and South Coast Highway interchange from 19 May 2024



Hanrahan Road

Road users will be able to access the Albany Ring Road (Menang Drive) via the new roundabout on Hanrahan Road. Travelling south on Hanrahan Road, road users will take the second exit and then proceed to turn right onto the Ring Road to head north towards South Coast Highway and Albany Highway or keep left and use the slip lane to travel to the Port or Albany CBD. Please see Figure 3 below showing these movements.

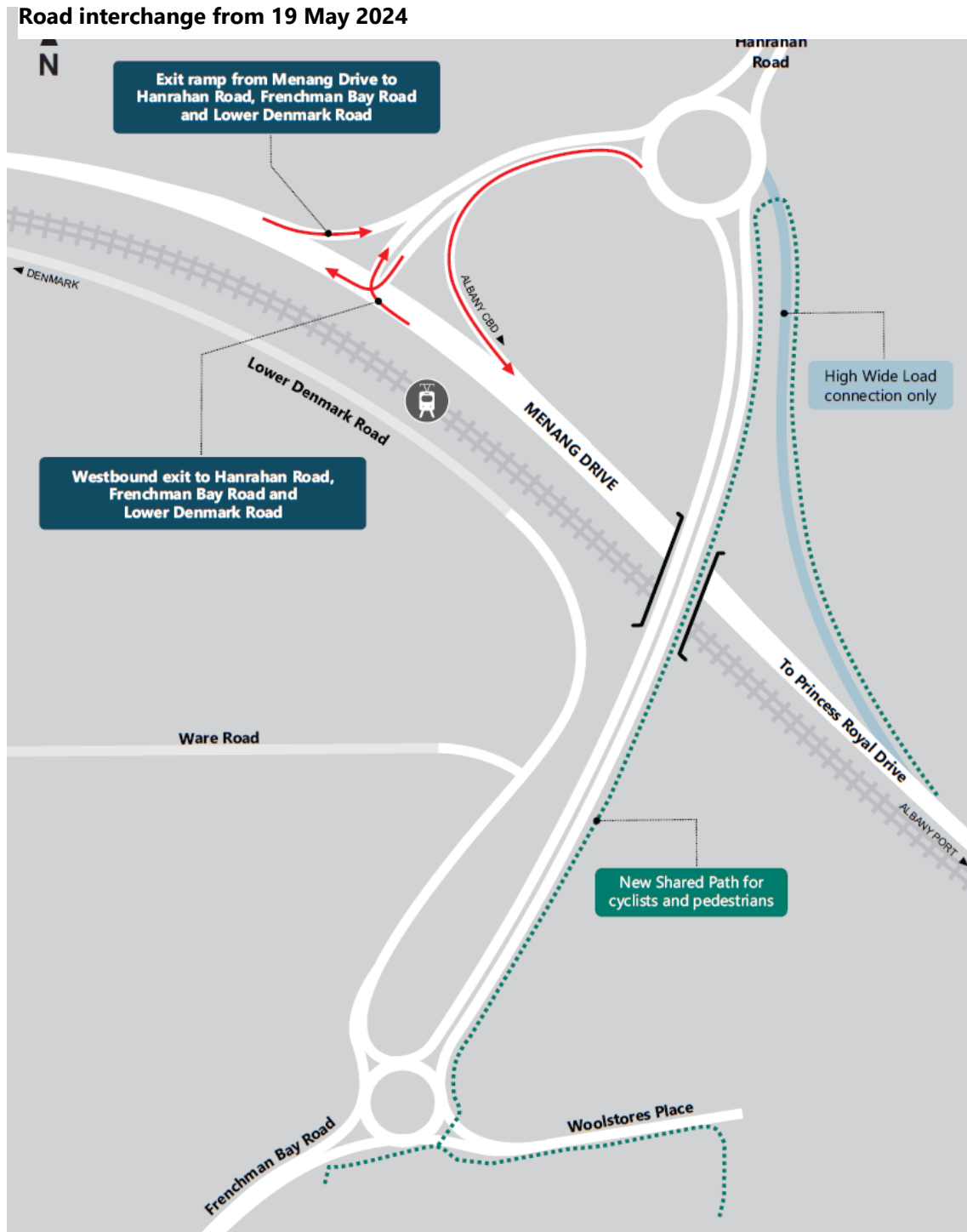
Frenchman Bay Road

From Frenchman Bay Road, road users will be able to access the Albany Ring Road (Menang Drive) by travelling over the new bridge, taking the first exit then either using the slip lane to travel towards Albany CBD or continuing straight to the Albany Ring Road intersection and turning right to travel north towards South Coast Highway and Albany Highway.

Access between the Albany Ring Road and Lower Denmark Road will also be available via the new Frenchman Bay Road bridge and connecting roundabouts.

Please see Figure 3 below for key turning movements at this interchange. For additional information about the traffic flow in this location, please refer to the new traffic simulation, located on our project webpage at www.mainroads.wa.gov.au/albany-ring-road

Figure 3: Traffic movements at the Albany Ring Road and Hanrahan Road / Frenchman Road interchange from 19 May 2024



Important changes for port-bound heavy vehicles

Port-bound heavy vehicles travelling from Chester Pass Road, South Coast Highway or Albany Highway towards Albany must turn onto Albany Ring Road (Menang Drive) and continue south along the Ring Road all the way to the Port.

From 19 May 2024 there will be changes to the Restricted Access Vehicle (RAV) network on Hanrahan Road for port-bound heavy vehicles. Please visit the Main Roads Heavy Vehicles website for more information.

The Albany Ring Road also includes northbound and southbound heavy vehicle parking bays, located on the section between Albany Highway and South Coast Highway.

Changes for cyclists and pedestrians

Both the Bibbulmun Track and the Munda Biddi Trail have been re-routed over the new Frenchman Bay Road bridge via a new, separated shared path. For further information and updated maps please visit their respective websites.

The Albany Ring Road (Menang Drive) contains a 2.5-metre wide, sealed shoulder, suitable for cyclists. While cyclists may choose to use these shoulders, they are encouraged to ride with care and be aware of heavy vehicles using this freight route.

Further information

To stay up to date with the project, subscribe to email notifications via our project webpage at:
www.mainroads.wa.gov.au/albany-ring-road

For more information, please call the Main Roads Customer Information Centre on 138 138 or email enquiries@mainroads.wa.gov.au