

Tonkin Gap Project and Associated Works

Construction Update

This update contains important information about upcoming work near you. Works below are anticipated for March but are subject to change. Details and dates of the below works will be communicated closer to the time of works through this website and our Tonkin Gap Facebook page.

1. Roadworks

In the coming months, you will notice lane reductions, night works, closures and speed restrictions across our project area. There is potential for longer than usual travel times and we encourage road users to plan and seek alternative routes where possible.

Night closure of Tonkin Highway northbound

To remove the existing barriers on Tonkin Highway, we may need to close Tonkin Highway northbound between Guildford Road and Collier Road at night. It is anticipated this will happen early April. We will provide further details and detour information in the coming weeks.

Tonkin Highway southbound - Morley Drive to Collier Road

We will be continuing rail-enabling works for the Morley-Ellenbrook Line on Tonkin Highway southbound soon between Morley Drive to Collier Road. This will include putting barriers in place at night with lane closures and speed reductions.

When?

- From mid-March

Great Eastern Highway lane closures and footpath detour

To prepare for the upgrade of Great Eastern Highway interchange, Water Corporation will be working on Great Eastern Highway in both directions to relocate water pipes running between Sanno Marracoonda Airport Hotel to Lyall street. There will be lane closures in both directions and a footpath detour in place.

When?

- Mid-late March for approximately four weeks



2. New bridge construction over the Swan River

We will continue construction of the new bridge over the Swan River during March, including piling and building the concrete casting yard.

Concrete casting yard

Once the south-west area next to Redcliffe Bridge is level, we will start building the concrete casting yard. This will involve pouring concrete to form the area where we will produce the bridge segments. For more information on the construction of the bridge, visit the Project History section on the website.

We can only pour concrete when the temperature is cooler, therefore, we will sometimes need to start works before 7am when pouring concrete.

Temporary footpath construction

Once we have finished the construction of the southern cofferdam (working platform) in the Swan River, we will make a temporary footpath on the south side of the river, to run under Redcliffe bridge to maintain access (map 1).



Temporary cofferdam construction



Map 1

3. Guildford Road and Railway Parade

We are upgrading both loop ramps at Guildford Road interchange which will improve road design and safety. Construction will also start on four new bridges that will be built over Railway Parade and Guildford Road. This is to accommodate four new lanes on the east side, and an additional lane and a shared path on the west. We started work here last month and construction will continue until approximately late-2022. During March, works will include:

- Clearing, mulching and topsoil removal near Tonkin Highway southbound Guildford Road on-ramp
- Temporary road widening at Great Eastern Highway on-ramp to Tonkin Highway southbound
- Construction of Tonkin Highway northbound Guildford Road temporary off-ramp
- Construction of Guildford Road temporary loop ramp to Tonkin Highway northbound
- Excavation of future shared path underpasses
- Excavation the footings for the bridges, sheet piling and pouring concrete footings for the bridge piers

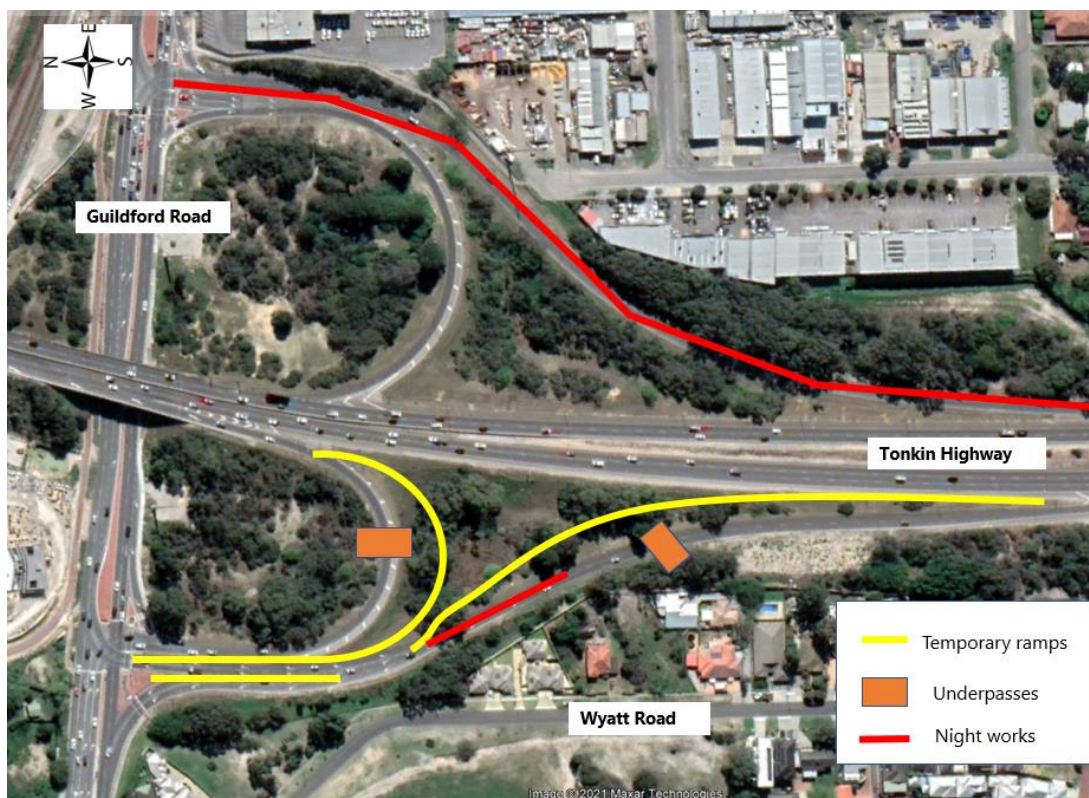
As we can only pour concrete when the temperature is cooler, we will sometimes need to start works before 7am.

Guildford Road ramp closures at night

Our crew will be working at night to start building a temporary road and place barriers at Guildford Road on-ramps to Tonkin Highway southbound and northbound. The ramps will be closed at night intermittently during March and a detour will be in place. Signage will be displayed at the ramps before we close it.

When and where?

- Intermittently from 8 March until 31 March, 8pm to 5am



4. Morley-Ellenbrook Line rail enabling works

As part of the rail enabling works for METRONET's Morley-Ellenbrook Line we will continue to work in the median of Tonkin Highway at Marshall Road, Reid Highway, Benara Road and Collier Road. Work includes the construction of deflection walls, pier protection and earthworks.

There will be increased truck movements near our works area in Morley and surrounds. We apologise for any inconvenience.

How will these works affect me?

- Works, vehicle and machinery movements will be noticeable
- To keep the local roads as clean as possible, street sweepers may be used after 7pm
- We will make every effort to minimise construction noise and vibrations where possible, particularly during night works
- Noise and vibration management measures are in place including use of the quietest equipment reasonably available
- Works will be in accordance with a noise management plan approved by your local government authority
- We will use water carts, street sweepers and dust suppressants to reduce the impact of dust

Contact us for further information on Tonkin Gap

FB: <https://www.facebook.com/groups/tonkingap/>

E: enquiries@mainroads.wa.gov.au

T: 138 138 (24 hours)

For more information on the Morley-Ellenbrook Line

W: www.metronet.wa.gov.au

E: info@metronet.wa.gov.au

T: 08 9326 3666

FB: <https://www.facebook.com/groups/morley.ellenbrook>