

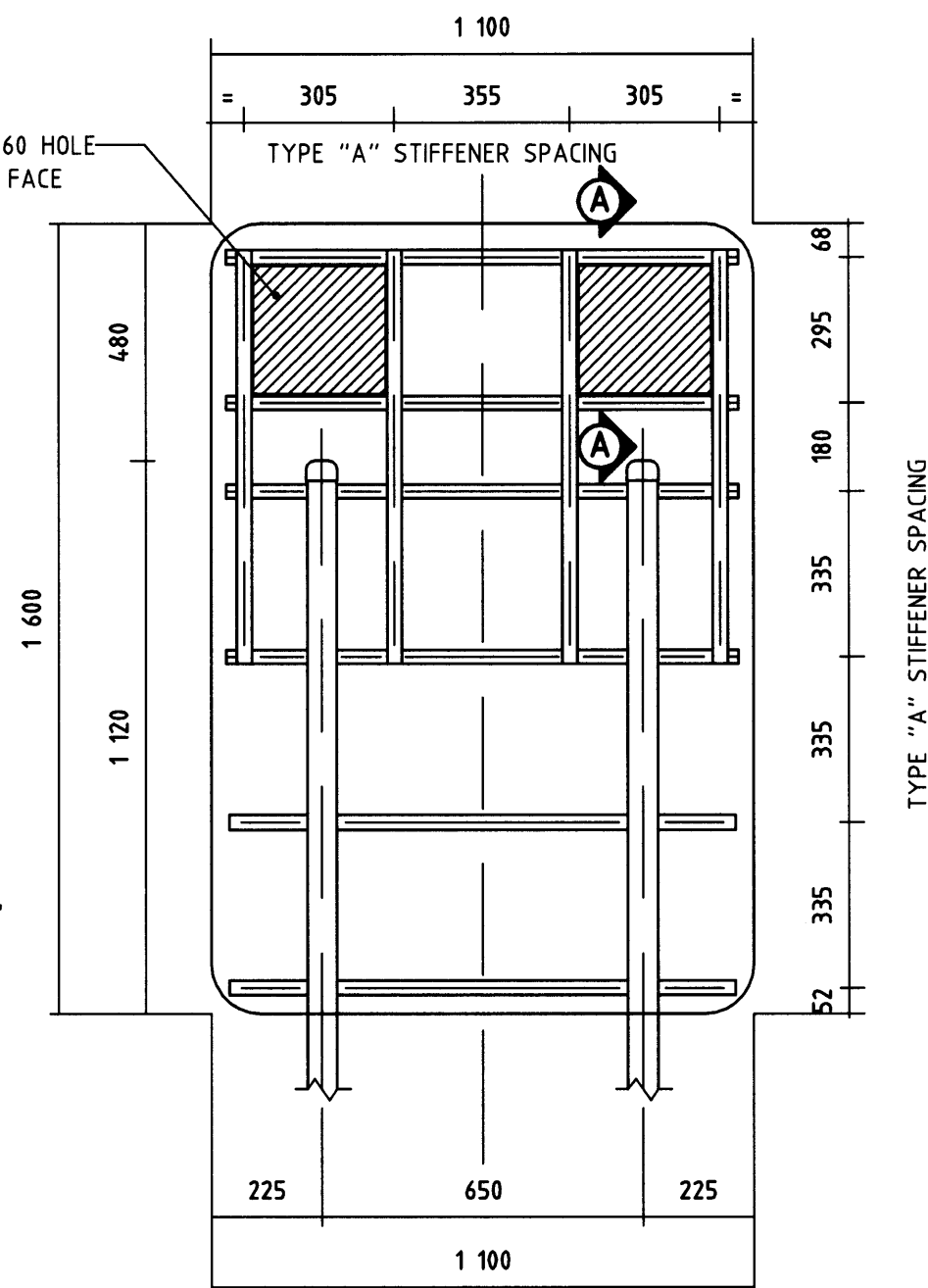
SECTION A-A : LANTERN MOUNTING DETAIL

SCALE: 1:5

NOTES:

1. SIZE "B" ADVANCE WARNING FLASHING SIGNS SHALL ONLY BE USED IN COMBINATION WITH SIZE "A" OR "B" SIGNS ON ROADS WITH A SPEED LIMIT OF 70km/h OR LESS, AND WHERE IT IS IMPRACTICAL TO PROVIDE SUFFICIENT SPACE FOR SIZE "C" OR "D" SIGNS. SIZE "B" SIGNS SHALL ONLY BE USED IN COMBINATION WITH SIZE "C" OR "D" SIGNS WHERE IT IS IMPRACTICAL TO PROVIDE SUFFICIENT SPACE FOR A SIGN OF THE SAME SIZE.
2. THE DESIGN OF POSTS AND STIFFENERS ON THIS DRAWING APPLIES FOR THE FOLLOWING CONDITIONS ONLY:
WIND REGION "A", TERRAIN CATEGORY "2", LEVEL GROUND, MOUNTING HEIGHT AS PER URBAN REQUIREMENTS.
3. CIRCULAR HOLLOW SECTION (CHS) SHALL BE USED FOR ONE-PIECE CONTINUOUS POSTS.
RECTANGULAR HOLLOW SECTION (RHS) SHALL BE USED FOR BREAKAWAY POSTS.
4. FOR RHS BREAKAWAY POST DETAILS SEE DRAWING No. 200431-0098.
5. OVERALL LENGTH TO BE INCREASED IF STREET NAME TAGS ARE USED, IN ORDER TO MAINTAIN MINIMUM CLEARANCE BETWEEN BOTTOM OF SIGN AND GROUND. POST DESIGN TO BE CHECKED.
6. ON SLOPING GROUND, OR WHERE DIFFERENT SIZE ADVANCE WARNING FLASHING SIGNS ARE USED ON OPPOSITE SIDES OF THE ROAD, OR DIFFERENT POST TYPES ARE USED, ADJUST THE POST LENGTHS AND MOUNTING HEIGHTS SUCH THAT THE LANTERNS ARE LEVEL.
7. THIS DRAWING SUPERSEDES DRAWING Nos. 9831-1016 & 200231-050 FOR STRUCTURAL DESIGN DETAILS.
8. THIS DRAWING SHOULD BE READ IN CONJUNCTION WITH DRAWING No. 200431-0100 FOR ALL ELECTRICAL INSTALLATION DETAILS AND DRAWING No. 200431-0086 FOR SIGN FACE DETAILS.

270 x 260 HOLE
IN SIGN FACE



TYPE "A" STIFFENER DETAIL

SCALE: 1:15

SIGN USAGE (REFER TO NOTE 1)	SUITABLE FOR SPEEDS (km/h)	PANEL				MOUNTING HEIGHT (mm)		MOMENT ARM L (m)	WIND FORCE kN	POST SIZE	FOOTING DETAILS					OVERALL LENGTH (mm)		NO. OF POSTS	NO. OF PANELS
		WIDTH (mm)	HEIGHT (mm)	AREA (Sq.m)	SECTION (mm)	LEFT	RIGHT				SOIL TYPE	C _D	DIA. (mm)	DEPTH (mm)	EMBEDMENT DEPTH (mm)	LEFT	RIGHT		
"B" ON CHS POSTS, "A" ON CHS POSTS	UP TO 70	1100	1600	1.76	1120	2050	2050	2850	2.1	60.3 CHS 4.5	MEDIUM	0.018	400	800	800	3970	3970	2	1
"B" ON CHS POSTS, "B" ON CHS POSTS	UP TO 70	1100	1600	1.76	1120	2000	2000	2800	2.1	60.3 CHS 4.5	MEDIUM	0.018	400	800	800	3920	3920	2	1
"B" ON CHS POSTS, "C" ON CHS POSTS	UP TO 80	1100	1600	1.76	1120	2335	2335	3135	2.1	76.1 CHS 4.5	MEDIUM	0.018	400	800	800	4255	4255	2	1
"B" ON CHS POSTS*, "C" ON RHS POSTS	UP TO 90	1100	1600	1.76	1120	2535	2535	3335	2.1	76.1 CHS 4.5	MEDIUM	0.018	400	800	800	4455	4455	2	1
"B" ON RHS POSTS, "C" ON CHS POSTS*	UP TO 90	1100	1600	1.76	1120	2335	2335	3135	2.1	125x75x3.0RHS	MEDIUM	0.018	400	800	800	4255	4255	2	1
"B" ON CHS POSTS*, "D" ON RHS POSTS	UP TO 110	1100	1600	1.76	1120	3235	3235	4035	2.1	76.1 CHS 4.5	MEDIUM	0.018	400	800	800	5155	5155	2	1
"B" ON RHS POSTS, "D" ON CHS POSTS*	UP TO 110	1100	1600	1.76	1120	3035	3035	3835	2.1	125x75x3.0RHS	MEDIUM	0.018	400	800	800	4955	4955	2	1
"B" ON RHS POSTS, "D" ON RHS POSTS	UP TO 110	1100	1600	1.76	1120	3235	3235	4035	2.1	125x75x3.0RHS	MEDIUM	0.018	400	800	800	5155	5155	2	1

* POSTS MARKED WITH AN ASTERISK WOULD NEED TO BE LOCATED OUTSIDE OF THE CLEAR ZONE, OR PROTECTED BY A SAFETY BARRIER.

16 NOV 2004

POST & STIFFENER DESIGN CRITERIA

REGION	CATEGORY
A	2



TECHNOLOGY AND ENVIRONMENT DIRECTORATE
ROAD AND TRAFFIC ENGINEERING BRANCH
WATERLOO CRESCENT EAST PERTH 6004
Telephone (08) 9323 4111 Fax (08) 9323 4449

FILE NUMBER 67-08-4F

DESIGNED / DRAWN N. PANGGABEAN DATE 14.10.04

VERIFIED DATE 05.11.04

APPROVED DATE 09.11.04

WARNING SIGN
ADVANCE WARNING FLASHING SIGNS

MR-WAW-1B, 3B, 6B, 7B, 8B, 9B, 10B

LOCAL AUTHORITY

DRAWING TYPE DRAWING NUMBER AMEND

6008 200431-0090