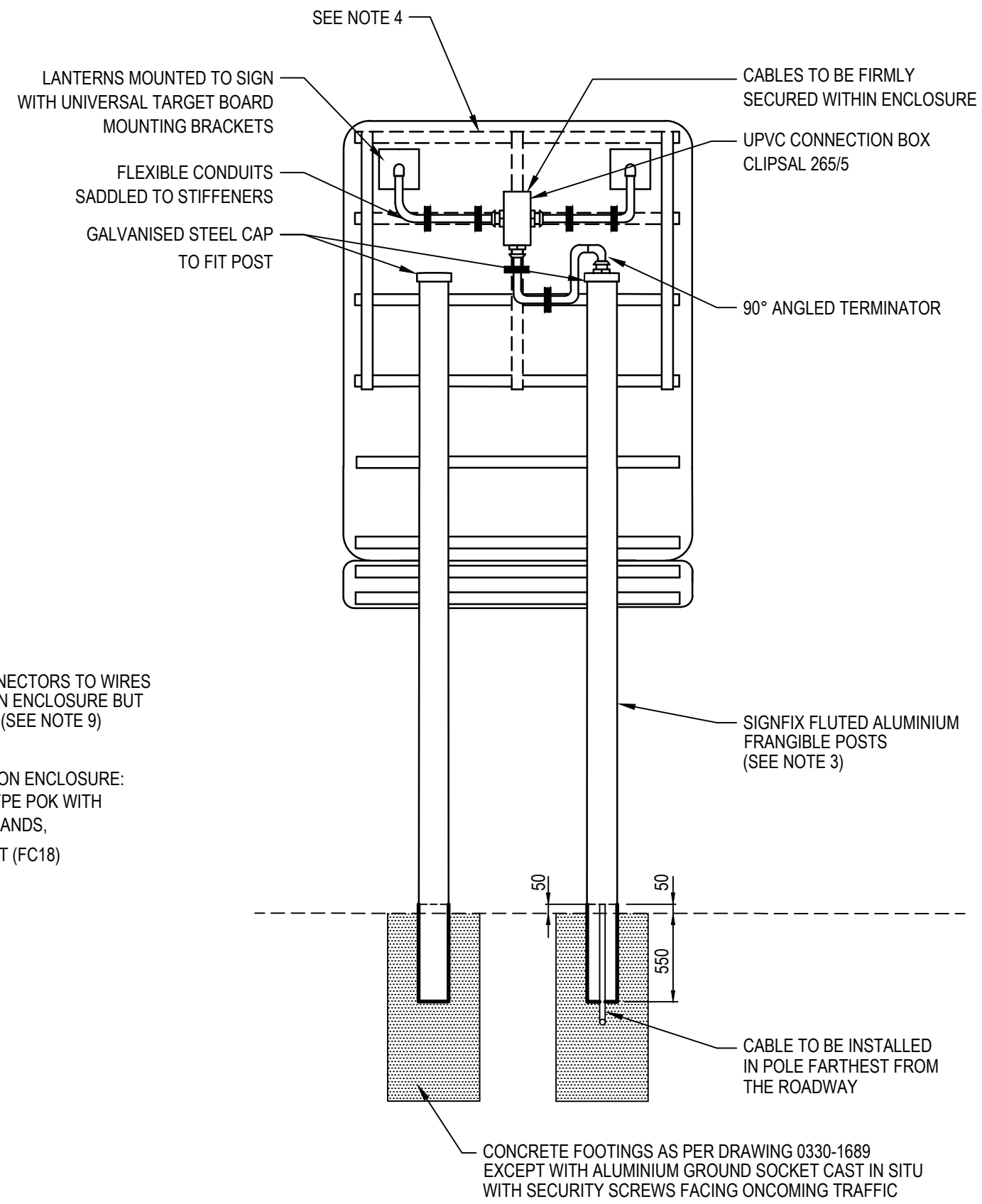


SIDE VIEW
NOT TO SCALE



REAR VIEW
NOT TO SCALE

AMENDMENTS		
No.	DESCRIPTION	APPROVED & DATE
1	EMBEDMENT DEPTH & NOTE 6 AMENDED. NOTE 12 ADDED.	R.K. 24/5/16
2	TITLE BLOCK AND FILE No. UPDATED. NOTES UPDATED, NOTE 13 ADDED.	C.M. 15/04/2026

- NOTES**
- THIS DRAWING SHALL BE READ IN CONJUNCTION WITH MAIN ROADS SPECIFICATION 712: TRAFFIC SIGNALS.
 - FOR GENERAL LAYOUT REFER TO DRAWING 200431-0104 & 200431-0105.
 - FOR SIGN AND POST FABRICATION DETAILS REFER TO DRAWING 200431-0085 TO 200431-0092.
 - ACTUAL STIFFENER LAYOUT MAY VARY FROM LAYOUT SHOWN. CONTRACTOR TO USE SAME FIXINGS & SIMILAR METHODOLOGY TO SECURE CABLES TO STIFFENERS.
 - FOR FOOTING DETAILS REFER TO DRAWING 201431-0016.
 - FOR WIRING DETAILS REFER TO DRAWING 201531-0060.
 - ALL FASTENINGS AND FIXTURES SHALL BE GRADE 316 STAINLESS.
 - AT LEAST 1m OF SLACK OF THE OUTGOING CABLE SHALL BE STORED IN THE POLE.
 - OUTGOING CABLES SHALL BE SUITABLY FIXED WITHIN THE PIT TO REDUCE THE RISK OF PULLING ON THE ENCLOSURE WHEN THE SLACK HAS BEEN TAKEN UP.
 - FOR TERMINATION PIT REFER TO MAIN ROADS SPECIFICATION 712: TRAFFIC SIGNALS AND DRAWING 200431-0128.
 - FOR TYPICAL ELECTRICAL CONSTRUCTION DETAILS USING CHS POSTS REFER TO DRAWING 200431-0100.
 - ALL WORK IS TO BE COMPLETED AND MAINTAINED UNDER RAILWAY PROVIDER'S SUPERVISION OR INSTRUCTION.
 - ALL DIMENSIONS ARE IN MILLIMETERS UNLESS STATED OTHERWISE.

2

2

mainroads
WESTERN AUSTRALIA

PLANNING AND TECHNICAL SERVICES DIRECTORATE
ROAD AND TRAFFIC ENGINEERING BRANCH

Waterloo Crescent EAST PERTH 6004
Telephone 138 138

DRAWN	J.VOKE	4/3/14
DESIGNED	R.KOORENGEVEL	4/3/14
VERIFIED	D.LANDMARK	14.3.14
APPROVED	R.GROVE	14.3.14
FILE NO.	13/4330	

STANDARD DRAWING
ADVANCE WARNING FLASHING SIGNS
TYPICAL ELECTRICAL CONSTRUCTION
USING ALUMINIUM FRANGIBLE POSTS

NOT TO SCALE
A3