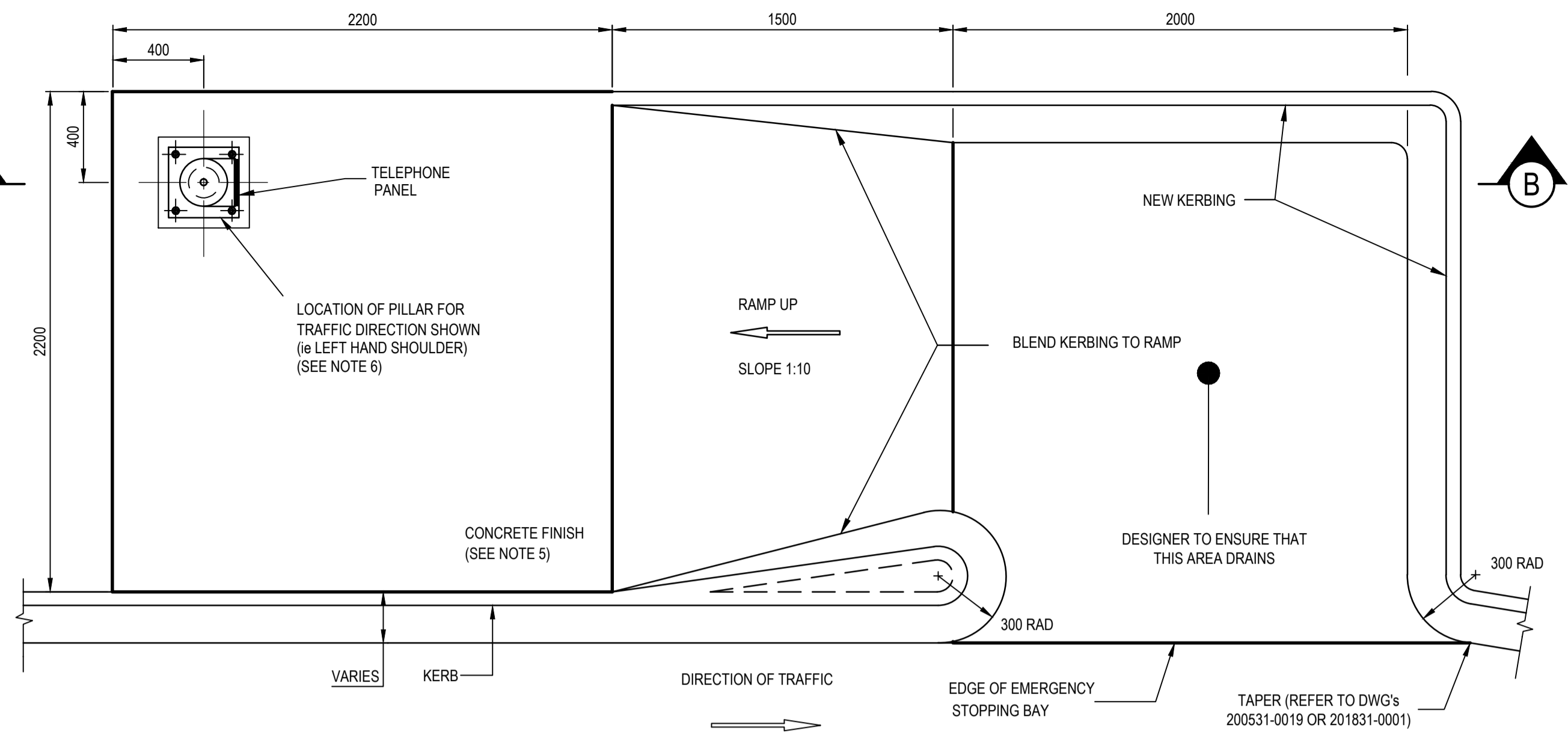
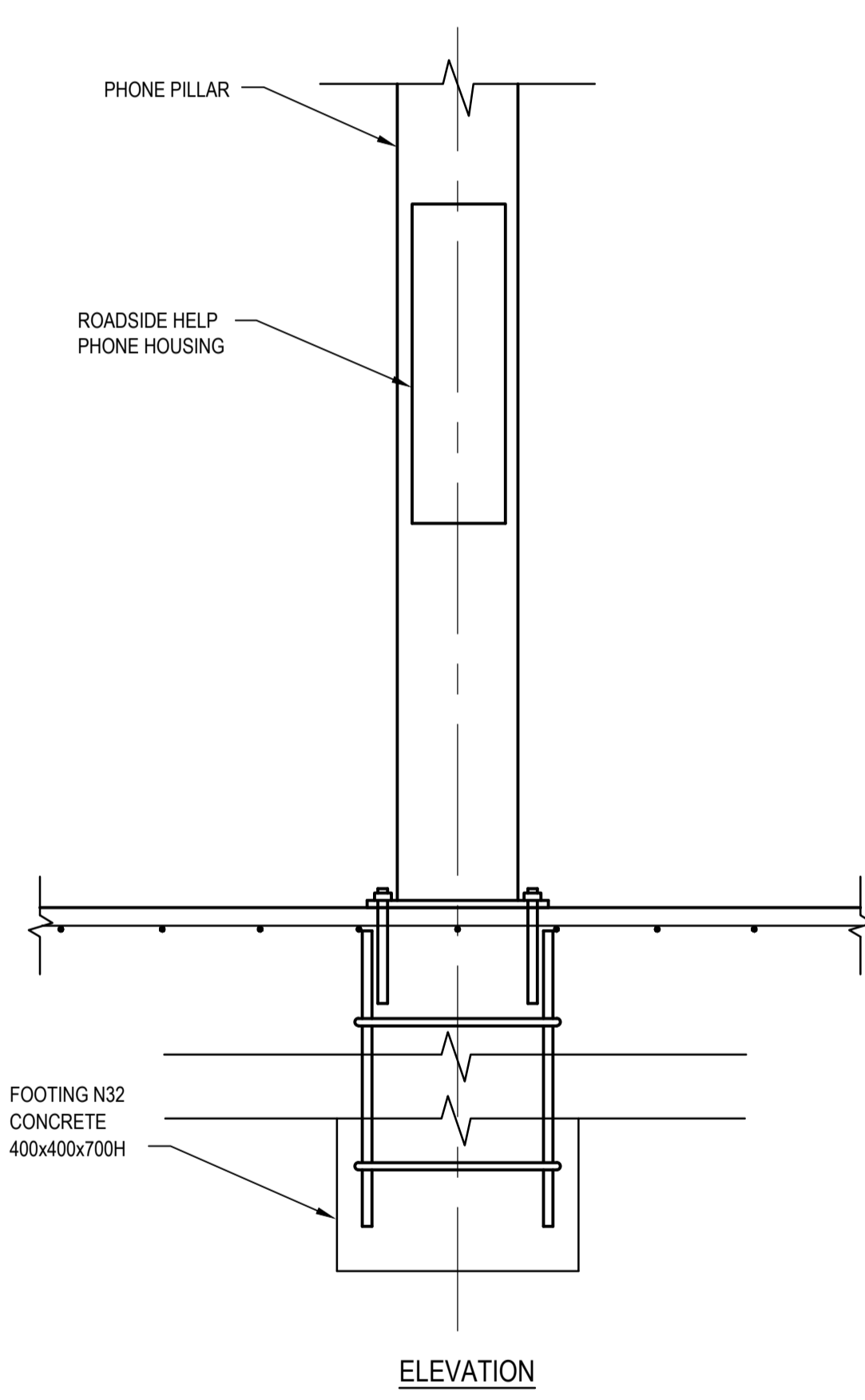


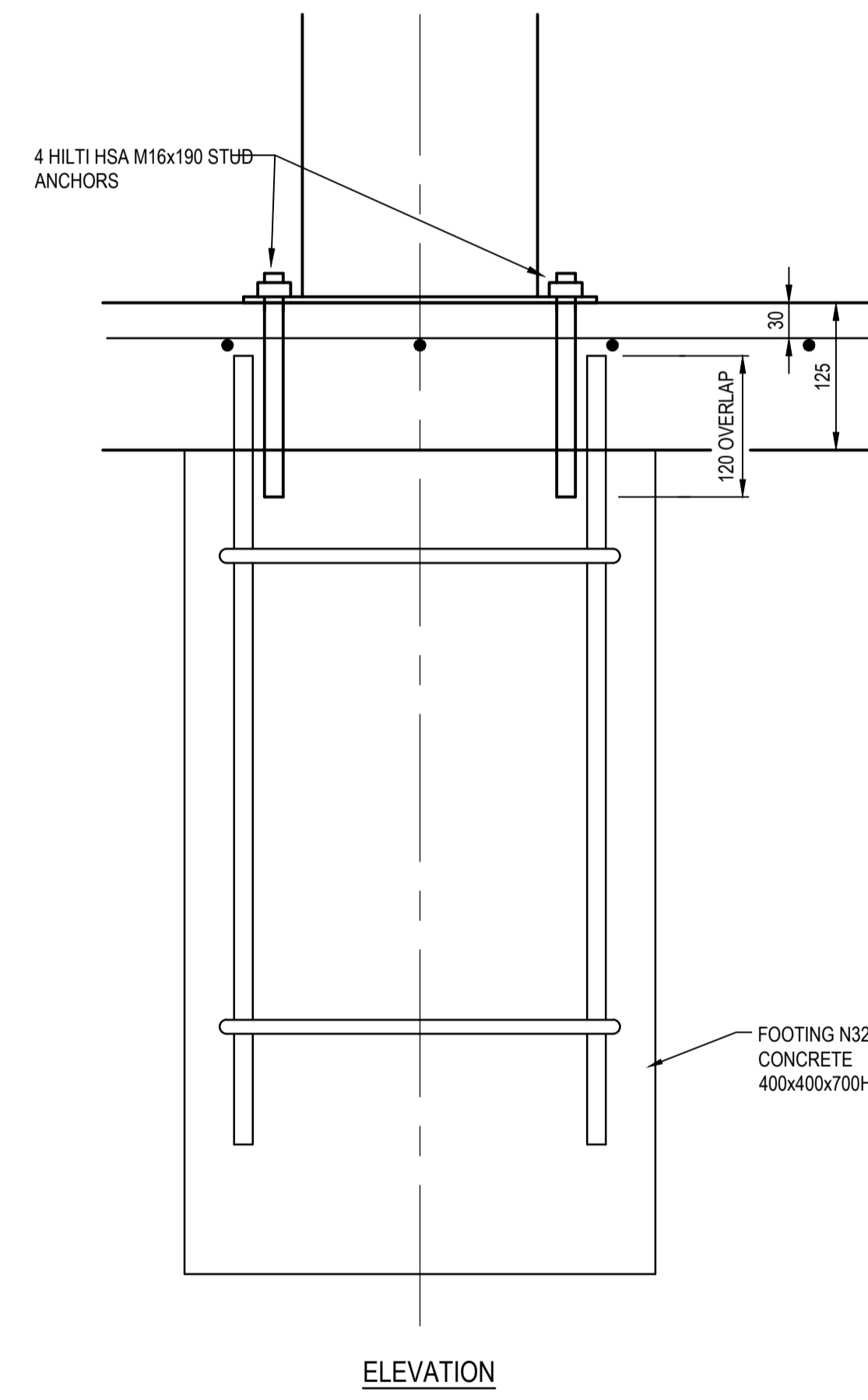
SECTION B-B
SCALE 1:20



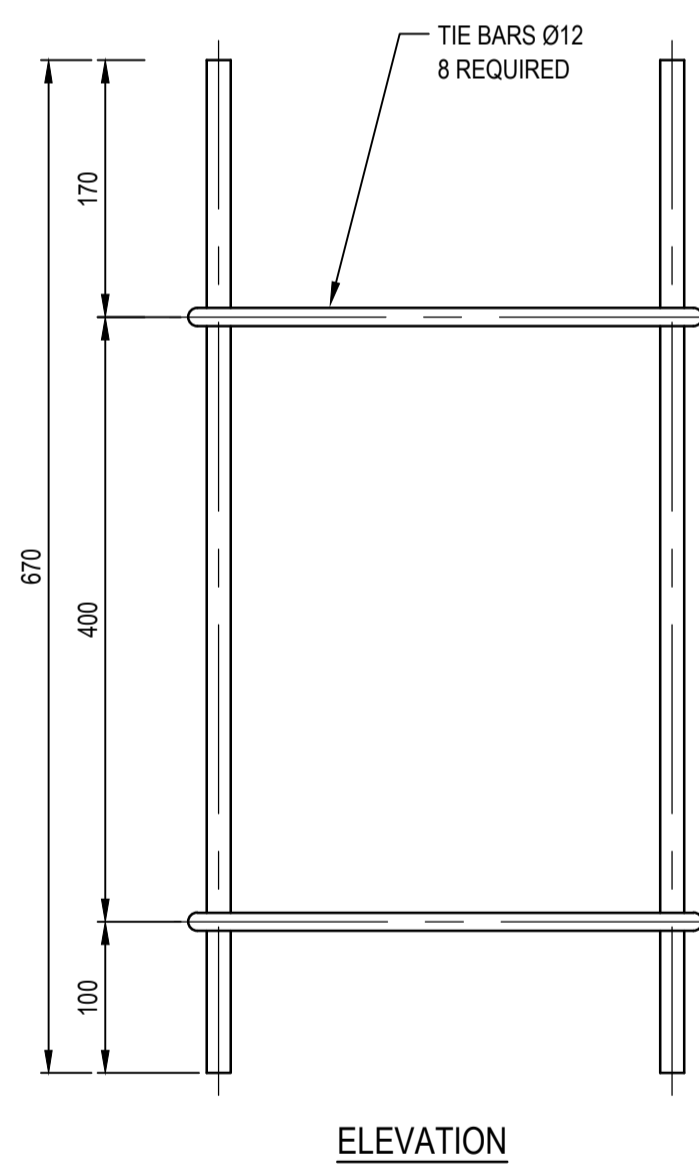
**SLAB DETAIL FOR ROADSIDE HELP PHONE COLUMN
(EMERGENCY STOPPING BAY WITH KERBING)**
SCALE 1:20



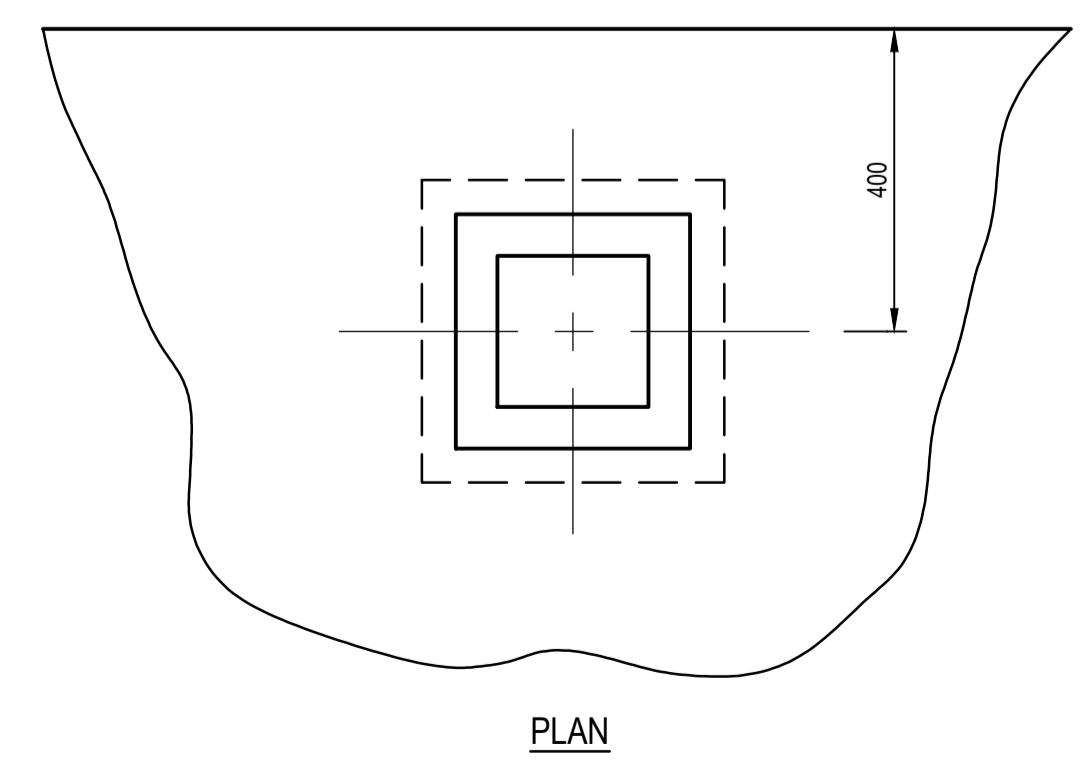
ELEVATION



ELEVATION



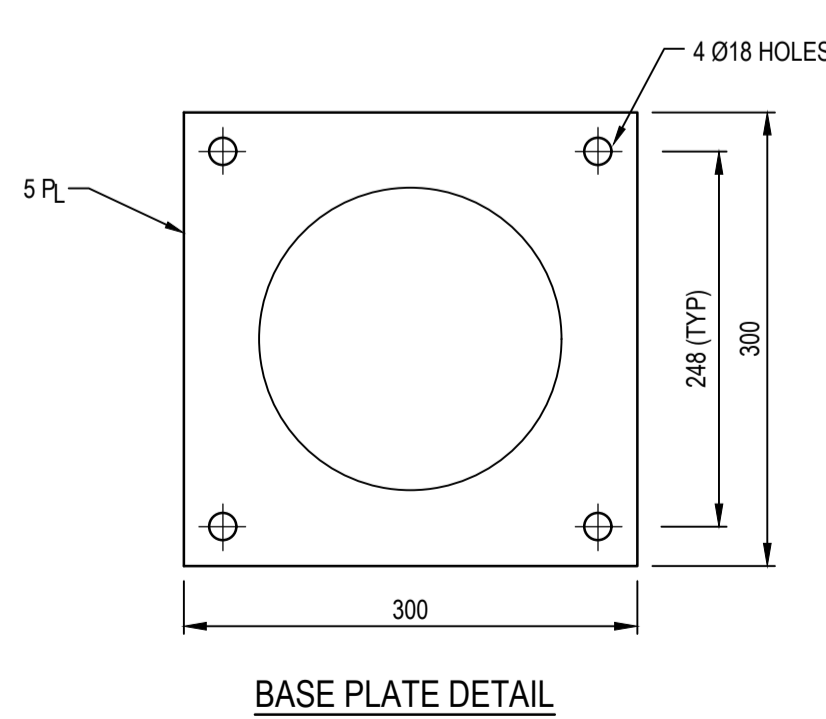
ELEVATION



PLAN

**ROADSIDE HELP PHONE
PILLAR**

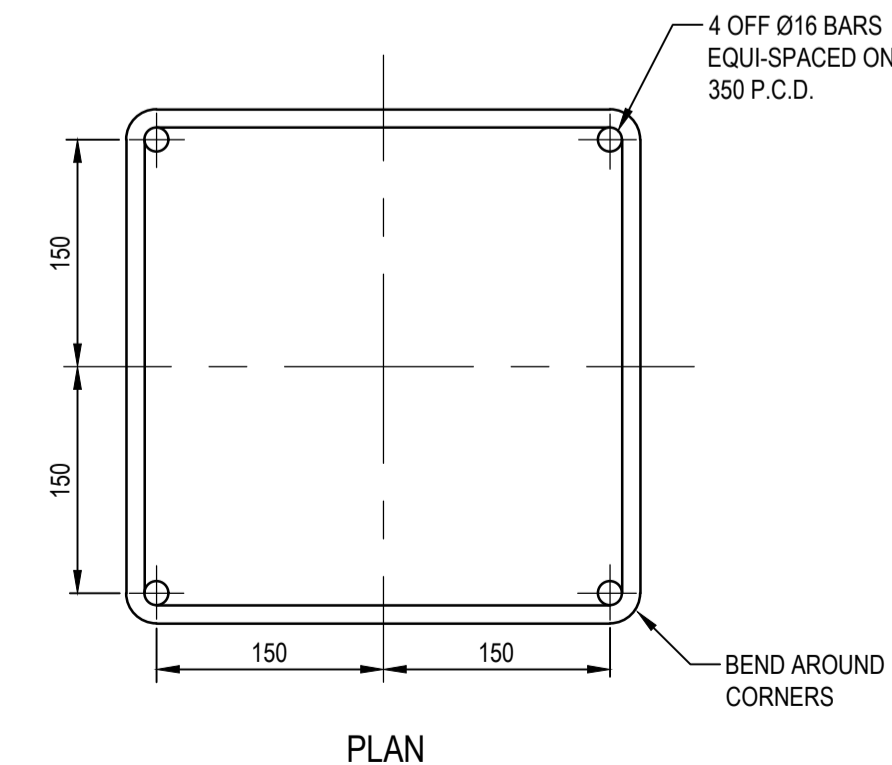
SCALE 1:10



BASE PLATE DETAIL

**ANCHOR BOLT DETAIL FOR
ROADSIDE HELP PHONE PILLAR**

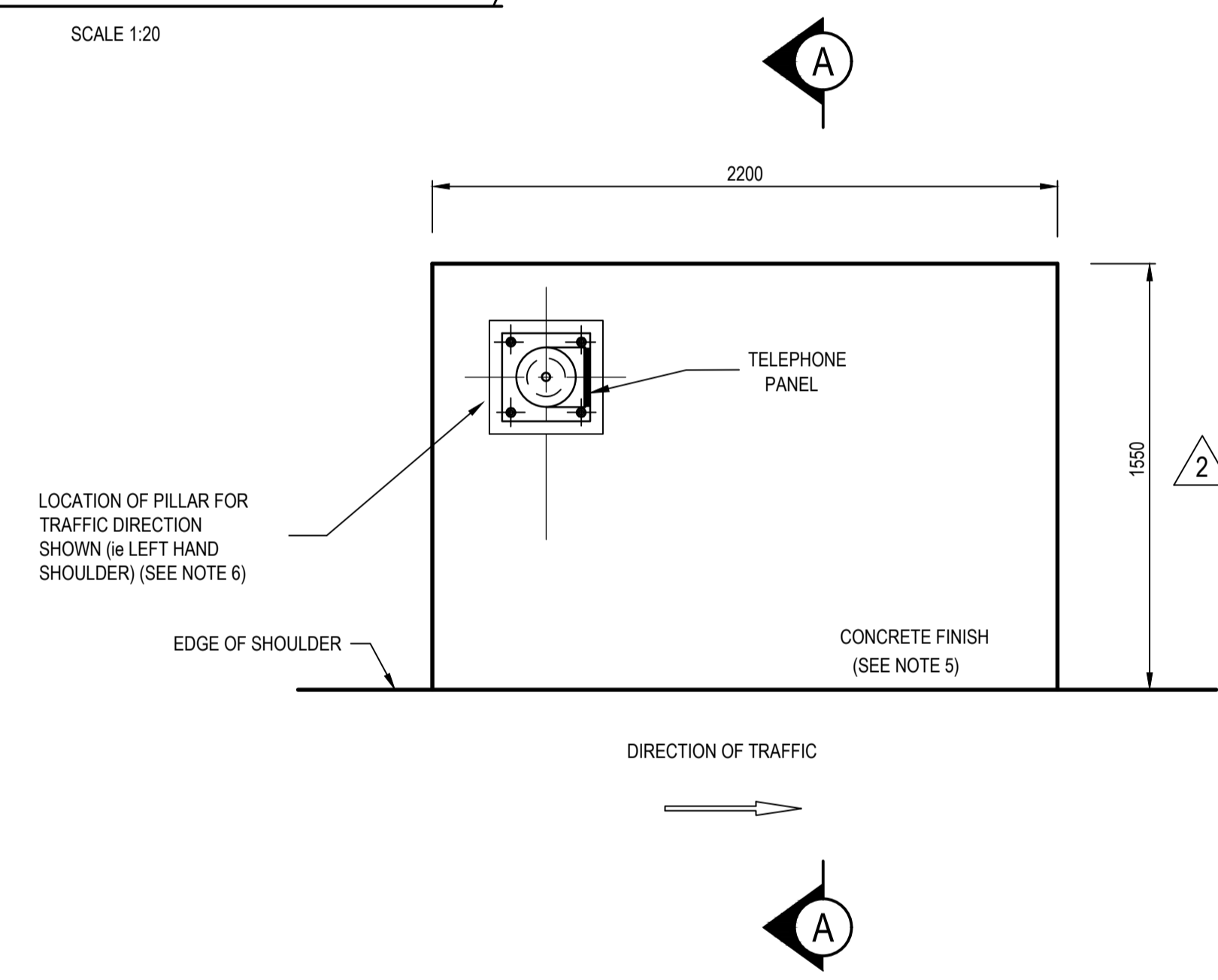
SCALE 1:5



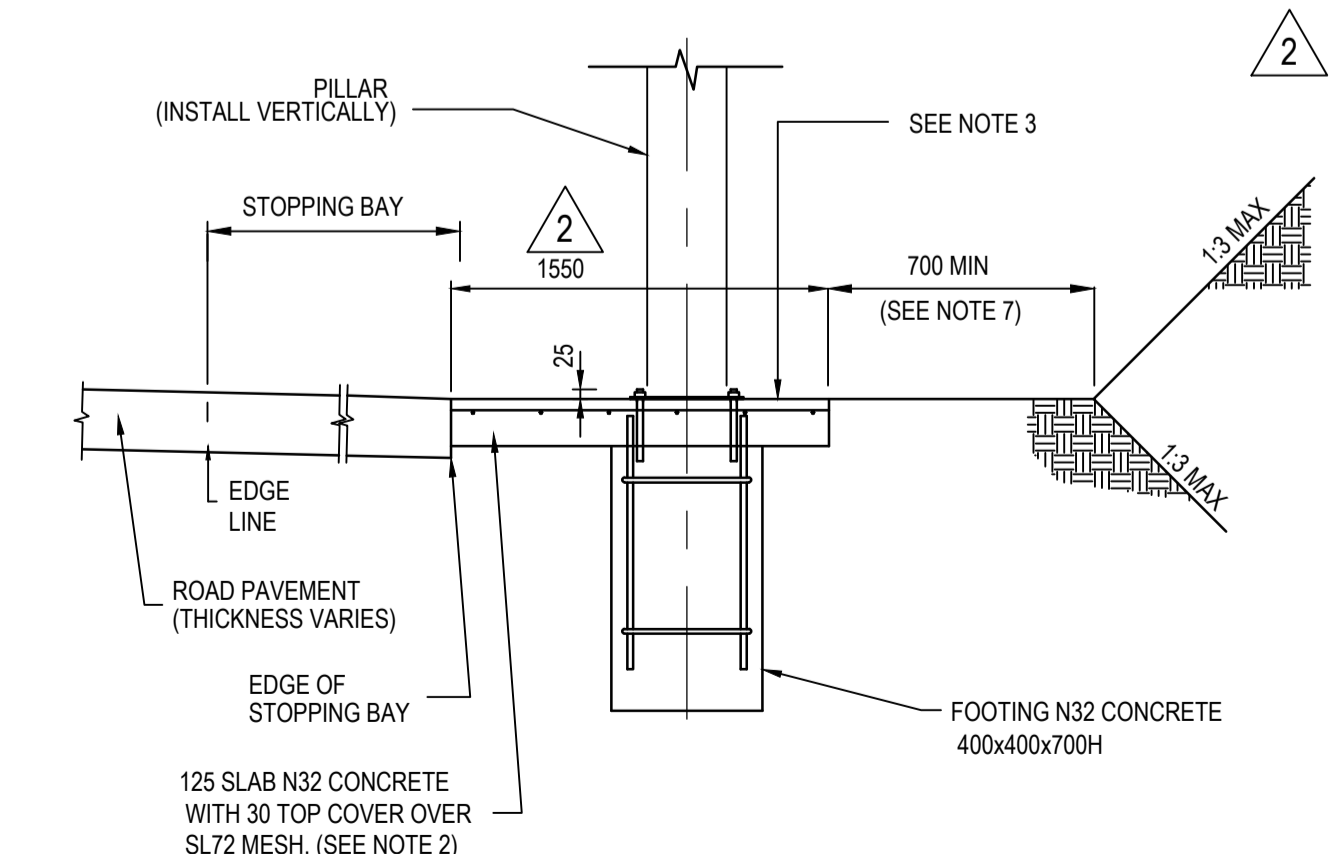
PLAN

**DETAIL FOR
ROADSIDE HELP PHONE PILLAR**

SCALE 1:5



**SLAB DETAIL FOR ROADSIDE HELP PHONE COLUMN
(EMERGENCY STOPPING BAY WITHOUT KERBING)**
SCALE 1:20



SECTION A-A

SCALE 1:20

AMENDMENTS		
No.	DESCRIPTION	APPROVED & DATE
1	NOTES 1, 6, 7, 9, 10 & 11 REMOVED, FOOTING & ANCHOR BOLT DETAILS CHANGED, HEADINGS & TITLE DETAILS CHANGED.	R.K. 23/5/2018
2	TITLE BLOCK AND FILE No. UPDATED. DIMENSIONS AMENDED.	A. Bohner 24/04/2024

- NOTES**
- THIS DRAWING SHALL BE READ IN CONJUNCTION WITH SPECIFICATION 702 ROADSIDE HELP PHONES AND THE EMERGENCY STOPPING BAYS AND ROADSIDE HELP PHONES GUIDELINE.
 - DAMPEN GROUND AND COMPACT TO 6 BLOWS PER 300mm FOR 600mm USING A STANDARD PERTH PENETROMETER BEFORE POURING SLAB.
 - TOP OF SLAB SHALL BE LEVEL WITH TOP OF KERB. IF NO KERB, SLAB SHALL BE LEVEL WITH THE ROAD PAVEMENT (+10mm) - SLAB SHALL BE LEVEL AND NOT FOLLOW ANY GROUND SLOPE.
 - FOR KERB DIMENSION SEE DRAWING No. 9331-0376.
 - TOP OF SLAB AND RAMP SHALL BE A WOOD FLOATED SURFACE WITH A BROOMED FINISH PARALLEL TO THE TRAFFIC DIRECTION. (GROOVES 1-4mm DEEP WITH 2-6mm SPACING).
 - PILLAR SHALL BE PLACED SUCH THAT THE USER FACES BOTH ONCOMING TRAFFIC AND TELEPHONE PANEL AND TELEPHONE PANEL IS ILLUMINATED BY NEAREST LUMINAIRE.
 - IN CONSTRAINED CONDITIONS A RETAINING WALL TO STRUCTURAL ENGINEER'S DETAILS MAY BE CONSTRUCTED. INSTALLATION OF A FENCE OR BALUSTRADE WILL BE REQUIRED.
 - CABLE PITS SHALL BE VISCONT INDUSTRIES SIZE P2 PLASTIC CABLE PITS (OR SIMILAR APPROVED). THE LOCATION OF CABLE PITS IS TO BE DETERMINED ON SITE AND LOCATED OVER EXISTING POWER AND/OR COMMUNICATION LINES.
 - ONLY APPLIES TO THE CABLED INSTALLATIONS.

mainroads
WESTERN AUSTRALIA

PLANNING AND TECHNICAL SERVICES DIRECTORATE
ROAD AND TRAFFIC ENGINEERING BRANCH
WATERLOO CRESCENT EAST PERTH 6004
Telephone 138 138

DRAWN	J. VOKE	JAN '07
DESIGNED	RTE BRANCH	
VERIFIED	R. KOORENGEVEL	8.6.10
APPROVED	D. LANDMARK	8.6.10
FILE NO.	13/4331	

GUIDELINE DRAWING
ROADSIDE HELP PHONES AT EMERGENCY STOPPING BAYS
GENERAL ARRANGEMENT,
FOUNDATION AND BASE DETAILS

MRWA DRAWING NUMBER
200731-0003-2

1:20
 1:10
 1:5
 A 1