

Are you familiar with the Operating Conditions?

When transporting your oversize boat, you must also ensure that you comply with each provision within the Class 1 RAV Oversize Period Permit Operating Conditions.

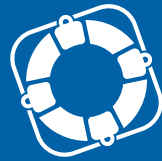


Oversize Boat Towing Checklist

- My vehicle and trailer are roadworthy.
- My vehicle and trailer are suitable for the mass I am towing.
- My tow bar is suitably rated.
- The oversize boat and trailer I need to transport is covered by the Oversize Boat Order.
- My boat is adequately secure.
- Adequate signage is in place.
- I am allowed to travel on my planned route.
- I have checked the Class 1 RAV Oversize Period Permit Operating Conditions relating to traveling at night, during public holidays and peak traffic periods.



Scan the QR code to access the Class 1 RAV Oversize Period Permit Operating Conditions on Main Roads website.



Safe Towing Requirements

Before travelling on the public road network, owners need to understand their vehicle towing capabilities to prevent costly damage and accidents.

Owners also need to know how to equip their vehicles and how to load and secure what they intend to tow. Vehicles and trailers must meet registration standards and must be roadworthy.

For more information visit the Department of Transport and Major Infrastructure website www.transport.wa.gov.au



WA Accreditation

You may hear that you need to be accredited to be issued with a Permit or operate under an Order in WA.

Accreditation is only required if the transport task is being conducted in connection with a business and the vehicle GVM is greater than 8 tonnes.

Therefore, you do not need to be accredited to operate under the Oversize Boat Order if your boat is for recreational purposes only.



HEAVY VEHICLE SERVICES

Guide to Towing Oversize Recreational Boats on Public Roads



Heavy Vehicle Services
525 Great Eastern Highway, Redcliffe, WA 6104 | Telephone: 138 486
Email: hvs@mainroads.wa.gov.au

www.mainroads.wa.gov.au

September 2025

Requirements for Towing an Oversize Recreational Boat on Public Roads



A boat trailer carrying an oversize boat in excess of 2.5 metres in width, requires approval from Main Roads to travel on the public road network.



The **Oversize Boat Order** applies to an oversize boat and boat trailer used for a purpose other than in connection with a business.



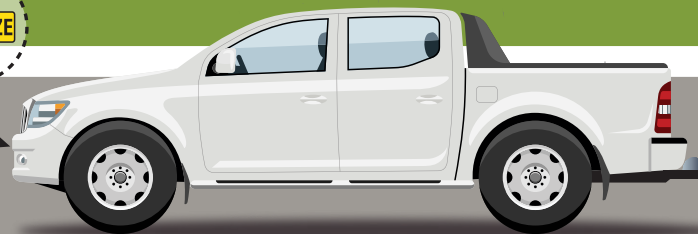
A boat exceeding 2.7 metres in width is prohibited from being transported at night, during public holidays and peak travel periods.



A boat exceeding 2.5 metres in width is prohibited from being transported on all freeways during the day.



In WA, the maximum speed for a vehicle towing a trailer is 100 km/h.



Are you displaying the correct warning devices?

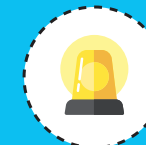
If your boat exceeds 2.5 metres in width you must clearly display:



“Oversize” warning signs visible from the front and rear of the vehicle.



Four (4) brightly coloured red, yellow, or red and yellow “flags” at least 450 mm long and 450 mm wide at the widest point at the front and rear of the boat.



If your boat exceeds 3 metres in width you must display at least one rotating, amber “flashing” warning light.

