



mainroads
WESTERN AUSTRALIA

*We're working for
Western Australia.*

Beam Platform Trailer Relocation Period Permit **Operating Conditions**

Printed copies are uncontrolled unless marked otherwise.
Refer to the Main Roads website for current version.

D25#1306690
February 2026

Contents

REFERENCES AND RELATED DOCUMENTS.....	5
DEFINITIONS	5
1 APPLICATION	7
1.1 Approved Vehicles.....	7
1.2 Approved Axle Configurations	7
2 COMPULSORY WA HEAVY VEHICLE ACCREDITATION	7
2.1 Requirement for Accreditation	7
2.2 Effect on the Permit	7
2.3 Non-Application of this Section.....	7
3 LICENSING REQUIREMENTS	7
3.1 Requirement for Appropriate Vehicle Licensing	7
3.2 Complying with Licence Conditions	8
4 COMPULSORY HEAVY VEHICLE INCIDENT REPORTING.....	8
5 PERMIT STATUS.....	8
5.1 Permit Suspension & Revocation	8
5.2 Permit Amendments & Notifications	8
6 ACCESS REQUIREMENTS.....	9
6.1 Route Survey	9
6.2 Approved Roads	9
6.3 Restricted Bridges	9
6.4 Crossing Bridges	9
7 DIMENSION REQUIREMENTS	9
7.1 Maximum Dimension Limits.....	9
7.2 Minimising Dimensions	9
8 MASS REQUIREMENTS	10
8.1 Towing Vehicle Mass Limits	10
8.2 Trailer Mass Limits.....	10
9 AXLE SPACING REQUIREMENTS.....	10
10 SPEED & SAFE TRAVEL CONDITIONS	10
10.1 Speed Restrictions.....	10
10.2 Passing & Overtaking	11
10.3 Minimum Following Distance	11
10.4 Poor Visibility	11
10.5 Parking.....	11
11 WARNING DEVICES	12
11.1 Lights	12
11.2 Warning Signs & Flags	12
11.3 Additional Warning Devices at Night	12
12 PILOT REQUIREMENTS	12
12.1 General Pilot Requirements.....	12

12.2	Pilot Vehicle Warning Lights and Signs	13
12.3	Managing Traffic	13
12.4	Position of Pilot Vehicles	13
12.5	Number of Pilots within the Metropolitan Area.....	14
12.6	Number of Pilots outside the Metropolitan Area	14
12.7	Additional Pilot Vehicles	14
12.8	Convoy Travel with Pilot Vehicles.....	14
13	APPROVED LOADS	15
14	APPROVED TRAVEL TIMES & CURFEWS	15
14.1	Night Travel Times & Curfews	15
14.2	Metropolitan Area Travel Times & Curfews	15
14.3	Christmas & New Year Curfews	16
14.4	Easter Curfew	16
14.5	Long Weekend Curfews	16
15	APPENDICES	16
	Appendix 1: Fremantle Port Precinct	17
	Appendix 2: Henderson Industrial Estate.....	18
	Appendix 3: Metropolitan Area Map.....	19
	Appendix 4: Mandurah Curfew Map	20
	Appendix 5: Roads Approved for 3 in Convoy	21
	Appendix 6: Roads Approved for 4 in Convoy	22
	Appendix 7: Burrup & Gap Ridge Precinct.....	23

Document Control

Owner	Main Roads Heavy Vehicle Services
Custodian	Manager Heavy Vehicle Road Network Access
Document Number	D25#1306690
Issue Date	January 2026
Review Frequency	As Required

Amendments

Revision Number	Revision Date	Description of Key Changes	Section
1	11/02/2026	Clarified licensing requirements. Added West Angeles Rd to approved 3 and 4 convoy routes. Added Burrup & Gap Ridge Precinct and associated night concession.	s. 3, 14.1 Appendix 5, 6 and 7.

REFERENCES AND RELATED DOCUMENTS

The following documents relate to these Operating Conditions and are available on the Main Roads website:

Document Name	Location
Oversize Vehicle & Pilot Vehicle General Requirements	https://www.mainroads.wa.gov.au/4a7a8c/globalassets/heavy-vehicles/permits-orders-schemes/osom/oversize-vehicle-and-pilot-vehicle-general-requirements.pdf

DEFINITIONS

The following are definitions for terms used in these Operating Conditions. Refer to the definitions in the *Road Traffic (Administration) Act 2008* and the *Road Traffic (Vehicles) Act 2012* and any subsidiary legislation to these Acts for the meanings of any terms not defined in this section. If a definition in the relevant Acts or the subsidiary legislation conflicts with a definition in this section, the definition in this section prevails for the purpose of these Operating Conditions.


Term	Definition
Beam Platform Trailer Relocation Network	The Beam Platform Trailer Relocation Network approved roads are published in the form of Road Tables or are available on the RAV Mapping Tool on the Main Roads website.
Burrup & Gap Ridge Precinct	The area within the boundaries of the Burrup and Gap Ridge Precinct as depicted in Appendix 7 .
Curfew	A period when the movement of an Oversize Vehicle is prohibited.
Day	The period from sunrise to sunset. Sunrise and sunset times can be obtained from the Perth Observatory website at www.perthobservatory.com.au/ or by contacting the Perth Observatory on 08 9293 8255, or from the Geoscience Australia website at http://www.ga.gov.au/geodesy/astro/sunrise.jsp
Fremantle Port Precinct	The area within and including the boundaries of the Fremantle Port Precinct as depicted in Appendix 1 .
Friday Long Weekend	A weekend extended to three days where the preceding Friday is the granted Public Holiday.
Henderson Industrial Estate	The area within the boundaries of the Henderson Industrial Estate as depicted in Appendix 2 .
Licensing Authority	A Government Authority responsible for the administration of the vehicle licensing provision of the law of the relevant State, Territory or the Commonwealth.
Main Roads Website	www.mainroads.wa.gov.au
Metropolitan Area	As depicted in Appendix 3 , means the area within: <ul style="list-style-type: none"> (a) the northern boundaries of the Local Government districts of Wanneroo, Swan and Mundaring; (b) the eastern boundaries of the Local Government districts of Wanneroo, Swan, Mundaring, Kalamunda, Armadale and Serpentine-Jarrahdale; (c) the southern boundaries of the Local Government districts of Serpentine-Jarrahdale and Rockingham; and (d) the Indian Ocean coastline.

Term	Definition
Monday Long Weekend	A weekend extended to three days where the following Monday is the granted Public Holiday.
Night	The period from sunset to sunrise. Sunset and sunrise times can be obtained from the Perth Observatory website at www.perthobservatory.com.au/ or by contacting the Perth Observatory on 08 9293 8255, or from the Geoscience Australia website at http://www.ga.gov.au/geodesy/astro/sunrise.jsp
Peak Hours	Means 7.30 am to 9.00 am and 4.30 pm to 6.00 pm on a Monday, Tuesday, Wednesday, Thursday or Friday, other than a public holiday.
Permit	Means a permit issued under Part 4 of the Road Traffic (Vehicles) Act 2012, which these Operating Conditions form part of.
Posted Speed Limit	The speed limit indicated by the numerals on the speed limit sign or 50 kilometres per hour in the absence of a speed limit sign in a built-up area.
RAV	Restricted Access Vehicle to which these operating conditions apply.
Statutory Mass Limits	The mass limits prescribed in Part 8 of the <i>Road Traffic (Vehicles) Regulations 2014</i> .

1 APPLICATION

1.1 Approved Vehicles

- 1.1.1 The *Beam Platform Trailer Relocation Period Permit* applies to a RAV described in the following table:

Tandem Drive & Beam Platform Trailer	
Vehicle Description	
<p>Tandem Drive Block Truck with 6 + 6 Axle Beam Platform Trailer</p> 	

1.2 Approved Axle Configurations

- 1.2.1 The *Beam Platform Trailer Relocation Period Permit* does not apply to a RAV with more than the number of axles indicated for the vehicle combination under clause 1.1.
- 1.2.2 The *Beam Platform Trailer Relocation Period Permit* does not apply unless the axles marked blue in the image under clause 1.1 are fully retracted, as per the following example.



Blue axles must be retracted.

- 1.2.3 The beam platform trailer must have eight (8) tyres per axle.
- 1.2.4 The drive axle group of the block truck must be fitted with dual tyres.

2 COMPULSORY WA HEAVY VEHICLE ACCREDITATION

2.1 Requirement for Accreditation

This *Beam Platform Trailer Relocation Period Permit* does not apply unless and until there is a person who is accredited in relation to the vehicle.

2.2 Effect on the Permit

If the person who is accredited in relation to the vehicle ceases to be accredited, the *Beam Platform Trailer Relocation Period Permit* ceases to have effect on and from the day on which the person ceases to be accredited.

2.3 Non-Application of this Section

The requirement for Accreditation under this section does not apply to a person operating a RAV that is not being used in connection with a business.

3 LICENSING REQUIREMENTS

3.1 Requirement for Appropriate Vehicle Licensing

This *Beam Platform Trailer Relocation Period Permit* does not apply unless the prime mover is licensed under the appropriate heavy vehicle licence class applicable to the number of trailers being towed.

3.2 Complying with Licence Conditions

In addition to these Operating Conditions, the RAV must be driven in accordance with any conditions of the vehicle's licence, as imposed by the relevant licensing authority.

4 COMPULSORY HEAVY VEHICLE INCIDENT REPORTING

All on-road incidents involving a RAV must be reported to Main Roads Heavy Vehicle Services by the operator. The Heavy Vehicle Incident Reporting form is available on the Incident Reporting page on the Main Roads website and it must be submitted within 48 hours of the incident occurring.

5 PERMIT STATUS

5.1 Permit Suspension & Revocation

- 5.1.1** Approval to operate a RAV may be suspended when road and/or traffic conditions are considered unsuitable. Main Roads personnel, WA Police or Traffic Escort Wardens, may make verbal notification of such suspension.
- 5.1.2** Approval to operate a RAV may be suspended or revoked if the operator or vehicle combination fails to comply with any of the requirements specified in the permit or these Operating Conditions.

5.2 Permit Amendments & Notifications

- 5.2.1** These Operating Conditions are subject to occasional amendments. If amendments are made that impact transport operators, they will be published as an "HVS Update" on the Main Roads website on the first working day of the month. Operators and drivers are required to ensure that they are operating vehicles on the public road network in accordance with the current Operating Conditions.
- 5.2.2** The RAV Networks and Restricted Bridge lists are subject to periodic amendments, which include additional roads or restricted bridges being included in the lists, roads or restricted bridges being removed from the lists, or amendments being made to a condition relating to a particular road or bridge in the lists. RAV Network and Restricted Bridge list updates will be effective from the Wednesday following the amendment and the RAV Networks and Restricted Bridge list are maintained in the RAV Mapping Tool and as lists on the Main Road website. Operators and drivers are required to ensure they are operating vehicles on the public road network in accordance with the current RAV Networks and Restricted Bridge lists.
- 5.2.3** Heavy Vehicle Travel Impacts are published when road conditions may impede the movement of Restricted Access Vehicles. Operators and drivers are required to check the Heavy Vehicle Travel Impacts on the Main Roads website immediately prior to operating the vehicle on the public road network to ensure that there is no relevant information that will impede their vehicle operating on the WA road network.
- 5.2.4** All conditions stipulated in HVS Updates or Heavy Vehicle Travel Impacts must be adhered to.
- 5.2.5** Where a condition stipulates that contact must be made with a site supervisor or any other person prior to travel, this must be done via email or text message and evidence provided to Main Roads' personnel upon request.

6 ACCESS REQUIREMENTS

6.1 Route Survey

- 6.1.1** Prior to departure, the operator or driver of the RAV must assess the route of travel to ensure that it is suitable for use and that it can be driven along without contravening these Operating Conditions.
- 6.1.2** A RAV must not be driven along a route or within an area if doing so would be likely to cause:
- (a) Damage to property or another vehicle; or
 - (b) Damage to telecommunication, electrical, gas, water or sewage services; or
 - (c) Damage to a road (including a bridge), structure, roadside furniture, rail crossing or tree.

6.2 Approved Roads

- 6.2.1** A RAV must only be driven on a road in the *Beam Platform Trailer Relocation Network*.
- 6.2.2** A RAV must be driven in accordance with the conditions specified for a particular road in the *Beam Platform Trailer Relocation Network*.
- 6.2.3** In addition to the roads listed in the *Beam Platform Trailer Relocation Network*, a RAV may be driven on all non-gazetted mine access roads that are open to the public, provided the RAV is not driven over any bridge.

6.3 Restricted Bridges

A RAV must not cross a bridge on the *Beam Platform Trailer Relocation Network* that has a condition restricting the RAV from crossing the bridge, except in accordance with clause 6.4.

6.4 Crossing Bridges

- 6.4.1** Where a RAV is driven over a bridge that is not a restricted bridge, the driver must drive the vehicle in the most centre part of the traffic lane, or where there are multiple lanes, within the centre of those lanes in the direction of travel.
- 6.4.2** If a RAV needs to cross a restricted bridge on the *Beam Platform Trailer Relocation Network*, a Bridge Crossing Permit must be obtained. An application for a Bridge Crossing Permit can be made by submitting a [Bridge Crossing Permit Application form](#), available on the Main Roads website.

7 DIMENSION REQUIREMENTS

7.1 Maximum Dimension Limits

- 7.1.1** The RAV must not exceed 3.7 metres in width.
- 7.1.2** The RAV must not exceed 40.0 metres in length.

7.2 Minimising Dimensions

The RAV must be reduced to the smallest possible dimension, with the exception of needing to disconnect vehicle components.

8 MASS REQUIREMENTS

8.1 Towing Vehicle Mass Limits

A block truck must not exceed the mass limits specified in the following table:

Axle Group	Mass Limit
Single Steer Axle with tyres <375 mm	6.5 t
Single Steer Axle with tyres ≥375 mm	7.1 t
Twin Steer Axle Group with non-load sharing suspension	10 t
Twin Steer Axle Group with load sharing suspension and tyres <375 mm	11 t
Twin Steer Axle Group with load sharing suspension and tyres ≥375 mm	12 t
Block Truck Tandem drive Axle Group	18.5 t

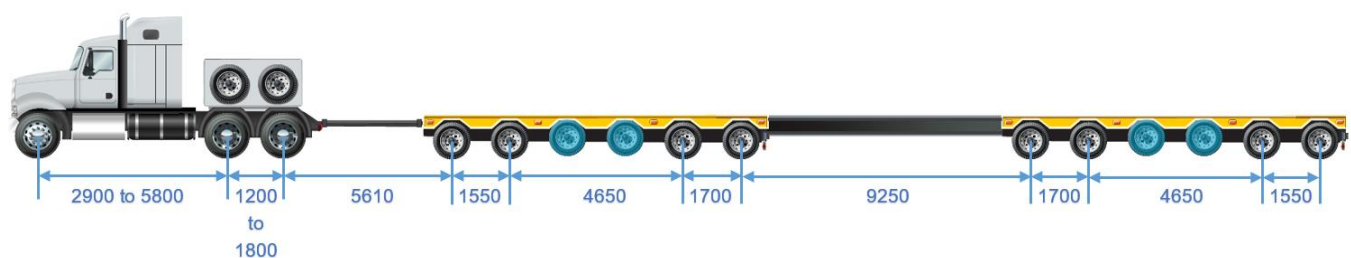
8.2 Trailer Mass Limits

A trailer must not exceed the mass limits specified in the following image:



9 AXLE SPACING REQUIREMENTS

The RAV must comply with the axle spacings (shown in millimetres) specified in the following image:



10 SPEED & SAFE TRAVEL CONDITIONS

10.1 Speed Restrictions

10.1.1 A RAV exceeding 3.5 metres in width travelling during the day must not be driven at a speed that exceeds the lesser of:

- (a) 80 km/h; or
- (b) 10 km/h below the posted speed limit.

10.1.2 A RAV exceeding 2.5 metres in width travelling at night must not be driven at a speed that exceeds the lesser of:

- (a) 80 km/h; or

(b) 10 km/h below the posted speed limit.

10.1.3 A RAV approaching a railway crossing must be driven at a speed at which the driver can, if necessary, stop safely before the crossing.

10.1.4 A RAV approaching any fixed obstacle, including roadside furniture, traffic signals, guardrails etc. must be driven at a speed at which the driver can safely negotiate the obstacle and if necessary, stop safely.

10.1.5 A RAV approaching another vehicle in the opposing direction must be driven at a speed at which the driver can, if necessary, move over or stop safely before passing.

10.2 Passing & Overtaking

10.2.1 The driver of a RAV or lead pilot must monitor the UHF channel 40 for oncoming RAVs. Where it is identified that two RAVs will need to pass in opposing directions and the road width is not adequate, a RAV passing a suitable parking bay must stop in the parking bay until the approaching RAV passes. All involved parties must communicate with one another to determine who will stop in a parking bay, or if no parking bay is available, move off the road at a suitable location.

10.2.2 Where the road width is not sufficient to allow an oncoming vehicle to pass the RAV and for both vehicles to remain on the sealed section of road, the RAV driver must determine which vehicle is a higher risk. Higher risk includes factors, such as heavier axle loadings and higher centre of gravity. The higher risk vehicle must remain on the sealed section of road, where practicable.

10.3 Minimum Following Distance

The driver of a RAV must maintain a distance of at least 200 metres from any other heavy vehicle travelling in front of it, unless:

- (a) The RAVs are travelling in convoy in accordance with these operating conditions; or
- (b) The RAV is overtaking the vehicle in front or the vehicle in front is stopping; or
- (c) There is a separate lane available for the use of overtaking traffic; or
- (d) The RAV is in an urban area and it is not reasonably practicable to maintain such a distance; or
- (e) The RAV is stopped, or coming to a stop for the purpose of complying with a provision of any law or avoiding conflict with other traffic.

10.4 Poor Visibility

10.4.1 The driver of a RAV must not begin to travel if, due to circumstances such as fog, heavy rain, smoke, dust or insect plague:

- (a) The visibility is less than 250 metres during the day; or
- (b) The headlights of a vehicle approaching within 250 metres could not be seen at night.

10.4.2 Where a RAV is already travelling when visibility is reduced to the level described above, the driver must drive into the nearest safe parking area and wait until visibility improves beyond that level before continuing to travel.

10.5 Parking

10.5.1 A RAV must not be parked in an area where parking of the RAV is prohibited.

10.5.2 Where parking of a RAV is permitted, the RAV must be parked in accordance with any parking requirements or restrictions applicable to the area.

11 WARNING DEVICES

11.1 Lights

11.1.1 A RAV must operate with headlights switched on at all times.

11.1.2 A RAV in excess of 3.0 metres in width or 25 metres in length must display at least one amber flashing warning light, which must be visible in all directions, or must be supplemented by additional warning lights so at least one warning light is visible in all directions.

11.1.3 A warning light must comply with the requirements set out in the *Oversize Vehicle & Pilot Vehicle General Requirements*.

11.1.4 A RAV must not display an amber flashing warning light if not required under this clause.

11.2 Warning Signs & Flags

11.2.1 A RAV exceeding 2.5 metres in width and/or 25 metres in length must clearly display:

- (a) An "Oversize" warning sign on the front of the vehicle; and
- (b) An "Oversize" warning sign on the rear of the vehicle; and
- (c) Four (4) warning flags. One flag must be positioned at each side of both the front and rear of the vehicle, or if there is any projecting load, at each side of both the front and rear of the projecting load.

11.2.2 An "Oversize" warning sign and warning flag must comply with the requirements set out in the *Oversize Vehicle & Pilot Vehicle General Requirements*.

11.2.3 An OSV must not display an "Oversize" warning sign if not required under this clause.

11.3 Additional Warning Devices at Night

11.3.1 If travelling at night, a RAV in excess of 2.5 metres in width and/or 25 metres in length must display at least one amber flashing warning light, which must be visible in all directions, or must be supplemented by additional warning lights so at least one warning light is visible in all directions.

11.3.2 A warning light must comply with the requirements outlined in the *Oversize Vehicle & Pilot Vehicle General Requirements*.

11.3.3 A RAV travelling at night must also display:

- (a) Lights showing yellow to the front and red to the rear (known as "side markers"), no more than 2 metres apart along both sides of the vehicle; and
- (b) If in excess of 2.5 metres in width, yellow or white lights (known as "front clearance lights") on the front of the trailer deck, one on each side of the trailer, as near as practical to the front outer edge and clearly visible to oncoming traffic.

12 PILOT REQUIREMENTS

12.1 General Pilot Requirements

12.1.1 The pilot vehicle must comply with the requirements stipulated in *Oversize Vehicle & Pilot Vehicle General Requirements*.

12.1.2 The driver of a pilot vehicle that accompanies a RAV must hold a Heavy Vehicle Pilot Licence.

12.1.3 The driver of a RAV must comply with any lawful direction or signal given by the lead pilot.

12.1.4 The driver of a RAV must produce any applicable permit to the pilot(s) accompanying the RAV upon request.

12.1.5 Prior to accompanying a RAV, pilots must inform themselves of the RAV dimensions, approved route and operating conditions. A pilot must not accompany a RAV that exceeds the allowable dimensions or does not comply with the operating conditions.

12.1.6 The headlights or day running lights on a pilot vehicle must be switched on when accompanying a RAV.

12.1.7 A pilot vehicle must not tow a trailer or carry a load, but it may carry tools, equipment or substances for use in connection with the RAV it is accompanying.

12.1.8 The pilot must not operate any other vehicle or machinery, such as steer a platform, whilst accompanying a RAV.

Note: *If a RAV is required to be accompanied by a pilot vehicle, the driver of the pilot vehicle must ensure that they comply with each provision of the permit that applies to the pilot vehicle.*

12.2 Pilot Vehicle Warning Lights and Signs

12.2.1 When accompanying a RAV, pilot vehicles must have amber flashing warning lights operating in accordance with the *Oversize Vehicle & Pilot Vehicle General Requirements*.

12.2.2 When accompanying a RAV, pilot vehicles must have "Oversize Load Ahead" warning signs displayed in accordance with the *Oversize Vehicle & Pilot Vehicle General Requirements*.

12.2.3 Pilot vehicles must not have warning lights operating or signs displayed when not accompanying a RAV.

12.3 Managing Traffic

12.3.1 The lead pilot must use UHF Channel 40 at regular intervals to warn oncoming traffic of the approaching RAV.

12.3.2 In accordance with clause 10.2, the lead pilot must monitor the UHF channel 40 for oncoming RAVs or oncoming higher risk vehicles and must facilitate the RAV or the other vehicles pulling into parking bays, or other appropriate areas, to enable the oncoming vehicles to pass safely.

12.3.3 To ensure the oncoming traffic can pass the RAV safely, the lead pilot must give clear lawful directions to oncoming traffic to move off the road. If a vehicle is not a sufficient distance off the road to allow clear passage of the RAV, the pilot must advise the driver of the RAV and the RAV must stop until the passage is clear.

12.4 Position of Pilot Vehicles

12.4.1 When one (1) pilot vehicle accompanies a RAV, the pilot vehicle must travel:

- (a) Behind the RAV when travelling on a road with multiple lanes in the direction of travel (other than overtaking lanes); or
- (b) In front of the RAV when travelling on a road with a single lane in the direction of travel.

12.4.2 When two (2) pilot vehicles accompany a RAV, the pilot vehicles must travel:

- (a) One (1) in front of the RAV and one (1) behind the RAV; or

- (b) Where necessary to manage traffic behind the RAV, both may travel behind the RAV when travelling on a road with multiple lanes in the direction of travel (other than overtaking lanes), provided the RAV does not encroach into oncoming traffic.

12.4.3 Sub-clauses 12.4.1 and 12.4.2 do not apply when it is necessary for the pilot vehicles to be positioned in a different manner for the purpose of managing traffic at intersections, bridge crossings or in accordance with a Traffic Guidance Scheme.

12.4.4 A pilot vehicle must travel far enough ahead of the RAV it is accompanying to give adequate warning to other road users of the presence of the RAV, taking into account the type of vehicles that use the road, traffic speed, road geometry, availability of safe pullover areas, weather, visibility and other driving conditions.

12.4.5 A pilot vehicle must not travel on or over continuous dividing lines on a carriageway, unless positioning the vehicle in a safe manner to control an intersection or close a road / bridge.

12.4.6 When crossing continuous dividing lines on a carriageway to control an intersection or close a road / bridge, the pilot must ensure there is sufficient sight distance available for approaching traffic to see the pilot and stop safely.

12.5 Number of Pilots within the Metropolitan Area

A RAV operating within the *Metropolitan Area* must be accompanied by the minimum number of pilot vehicles specified in the following table:

Overall Width	Overall Length	Minimum Pilot Requirements
≤3.7 m	>30 m ≤40 m	Three (3) Pilot Vehicles

12.6 Number of Pilots outside the Metropolitan Area

A RAV operating outside the *Metropolitan Area* must be accompanied by the minimum number of pilot vehicles specified in the following table:

Overall Width	Overall Length	Minimum Pilot Requirements
≤3.7 m	>26 m ≤35 m	One (1) Pilot Vehicle
≤3.7 m	>35 m ≤40 m	Two (2) Pilot Vehicles

12.7 Additional Pilot Vehicles

12.7.1 The number of pilot vehicles specified in clauses 12.5 and 12.6 are the minimum number of pilot vehicles required. If an operator considers it necessary to use additional pilot vehicles to facilitate the safe movement of the RAV, additional pilot vehicles may be used.

12.7.2 In addition to the number of pilot vehicles specified in clauses 12.5 and 12.6, if a condition for a particular road in *Beam Platform Trailer Relocation Network* stipulates a higher number of pilot vehicles, the RAV must be accompanied by that number of pilot vehicles.

12.8 Convoy Travel with Pilot Vehicles

12.8.1 RAVs may travel in convoy if stipulated under this clause, provided:

- The transport operator has a documented contingency plan to manage the RAVs in the event of a mechanical failure; and
- The transport operator has a documented plan for fatigue breaks and other required stops to ensure the parking areas are suitable to safely accommodate all RAVs the convoy.

- 12.8.2** A maximum of two (2) RAVs may travel in convoy with one another when accompanied by the appropriate number of pilots, unless otherwise specified in this clause.
- 12.8.3** Three (3) RAVs may travel in convoy while travelling on a road listed in [Appendix 5](#).
- 12.8.4** Four (4) RAVs may travel in convoy while travelling on a road listed in [Appendix 6](#), provided an additional pilot vehicle accompanies the convoy.
- 12.8.5** Each RAV in the convoy must obtain a separate permit.
- 12.8.6** When RAVs are travelling in convoy, the pilot vehicle requirements and any other conditions that are applicable to the largest combination, apply to the convoy.
- 12.8.7** The distance between RAVs travelling in convoy must not exceed 100 metres.

13 APPROVED LOADS

The RAV must not carry any load, except for any of the following items, which must be fully contained within the confines of the trailer:

- (a) One Pilot vehicle;
- (b) Tools and equipment essential for the loading and securing of a large indivisible item;
- (c) A gooseneck dolly, providing the vehicle combination does not include a gooseneck dolly as part of the vehicle configuration;
- (d) A platform module forming part of the platform trailer during the laden stage of the journey immediately prior to or following the platform trailer relocation;
- (e) A block truck forming part of the platform trailer combination during the laden stage of the journey immediately prior to or following the empty platform trailer relocation, provided the loaded height does not exceed 4.6 metres.

14 APPROVED TRAVEL TIMES & CURFEWS

14.1 Night Travel Times & Curfews

A RAV must not travel at night except where it is within the dimension limits and travelling on the roads specified in the following table.

Overall Length	Overall Width	Permitted Roads
≤40 metres	≤3.7 metres	All roads listed in the <i>Beam Platform Trailer Relocation Network</i> within the Metropolitan Area, between 7:30pm and sunrise only.
≤40 metres	≤3.7 metres	Roads listed in the <i>Beam Platform Trailer Relocation Network</i> within the Fremantle Port Precinct, Burrup & Gap Ridge Precinct, or the Henderson Industrial Estate.

14.2 Metropolitan Area Travel Times & Curfews

A RAV must not travel in the Metropolitan Area during peak hours except where it is within the dimension limits and travelling on the roads specified in the following table:

Overall Length	Overall Width	Permitted Roads
≤40 metres	≤3.1 metres	Roads listed in the <i>Beam Platform Trailer Relocation Network</i> within the Fremantle Port Precinct.

≤40 metres	≤3.7 metres	Roads listed in the <i>Beam Platform Trailer Relocation Network</i> within the Henderson Industrial Estate.
≤40 metres	≤3.7 metres	Roads listed in the <i>Beam Platform Trailer Relocation Network</i> that are also approved roads within the Metropolitan Area during curfew, as depicted in Appendix 3 .

14.3 Christmas & New Year Curfews

A RAV exceeding 2.7 metres in width and/or 30 metres in length must not travel on Forrest Highway and Lakelands Lake Clifton Road (includes Mandurah and Dawesville Bypasses), between the intersections of Pinjarra Road and Peppermint Grove Road, during the period from sunset on 18th December until sunrise on 4th January. Refer to [Appendix 4 – Mandurah Curfew Map](#).

14.4 Easter Curfew

A RAV exceeding 2.7 metres in width and/or 30 metres in length must not travel on Forrest Highway and Lakelands Lake Clifton Road (includes Mandurah and Dawesville Bypasses), between the intersections of Pinjarra Road and Peppermint Grove Road, during the period from sunset on the Wednesday before Good Friday until sunrise on the Tuesday after Easter Monday. Refer to [Appendix 4 – Mandurah Curfew Map](#).

14.5 Long Weekend Curfews

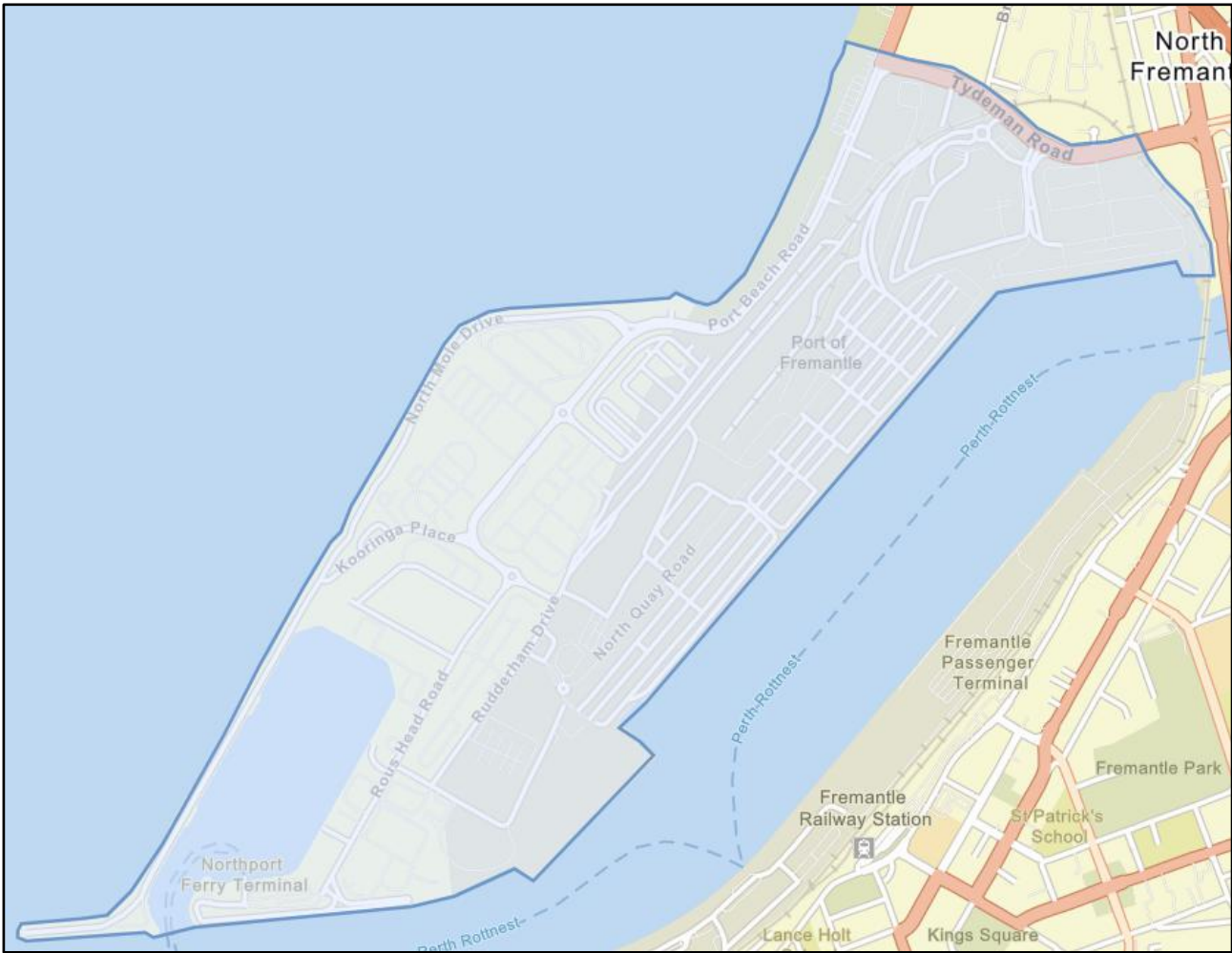
A RAV exceeding 2.7 metres in width and/or 30 metres in length must not travel on Forrest Highway and Lakelands Lake Clifton Road (includes Mandurah and Dawesville Bypasses), between the intersections of Pinjarra Road and Peppermint Grove Road, (Refer to [Appendix 4 – Mandurah Curfew Map](#)), during the following periods:

- (a) Sunset on the Thursday prior to a Monday long weekend until sunrise on the Tuesday after a Monday long weekend; and
- (b) Sunset on the Wednesday prior to a Friday long weekend until sunrise on the Monday after a Friday long weekend.

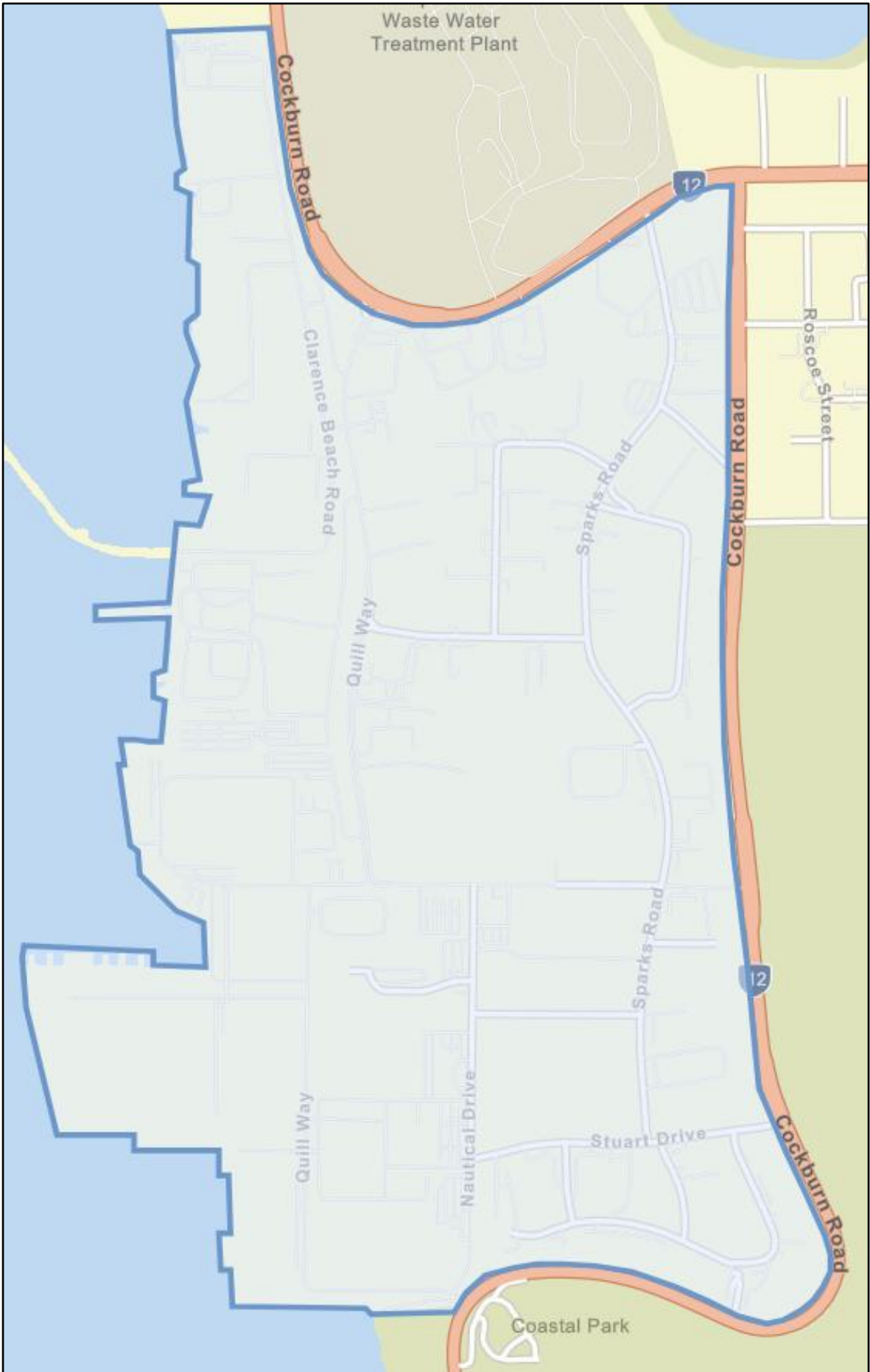
15 APPENDICES

Appendix	Title
Appendix 1	Fremantle Port Precinct
Appendix 2	Henderson Industrial Estate
Appendix 3	Metropolitan Area Map
Appendix 4	Mandurah Curfew Map
Appendix 5	Roads Approved for 3 in Convoy
Appendix 6	Roads Approved for 4 in Convoy
Appendix 7	Burrup & Gap Ridge Precinct

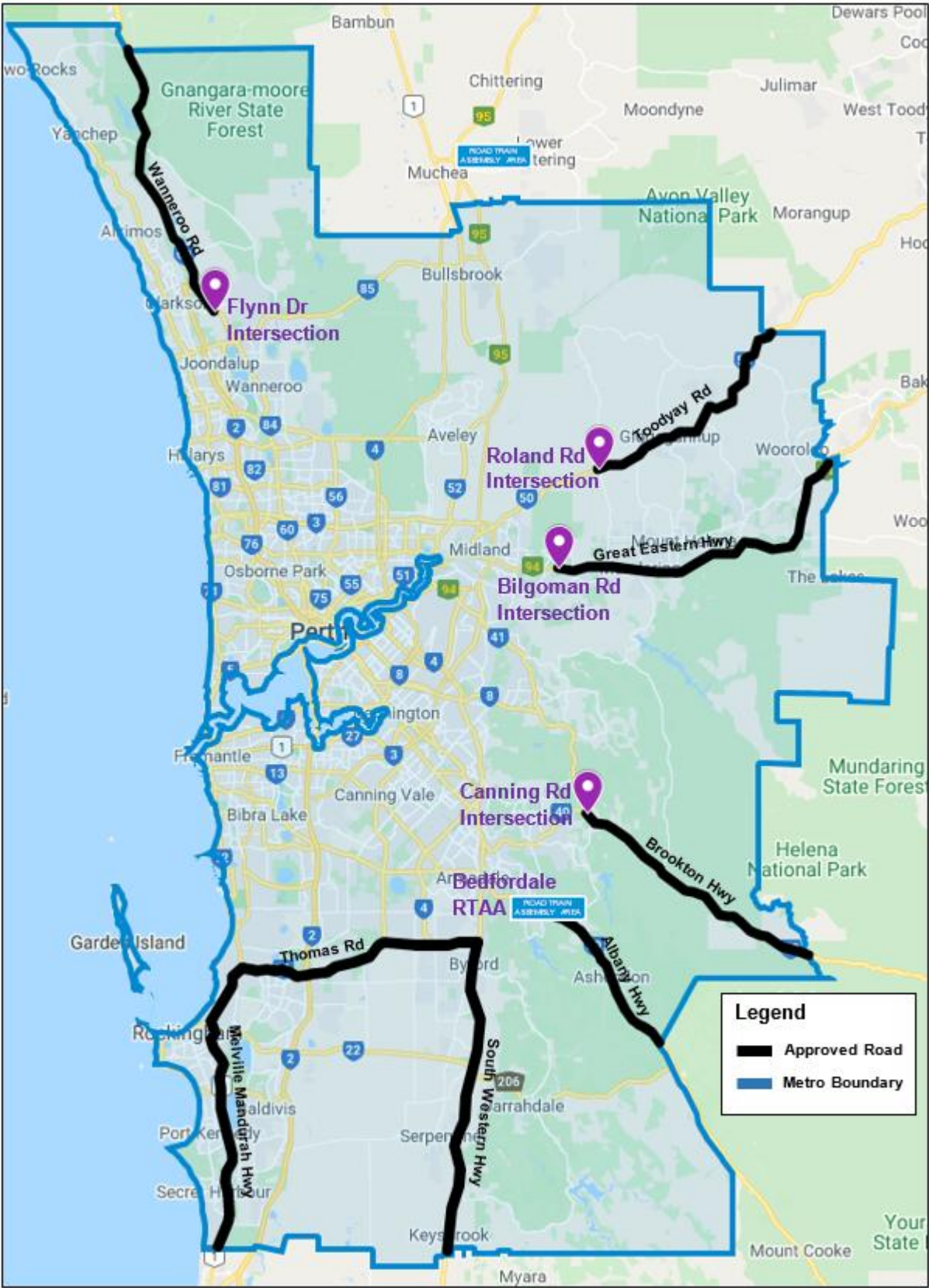
Appendix 1: Fremantle Port Precinct



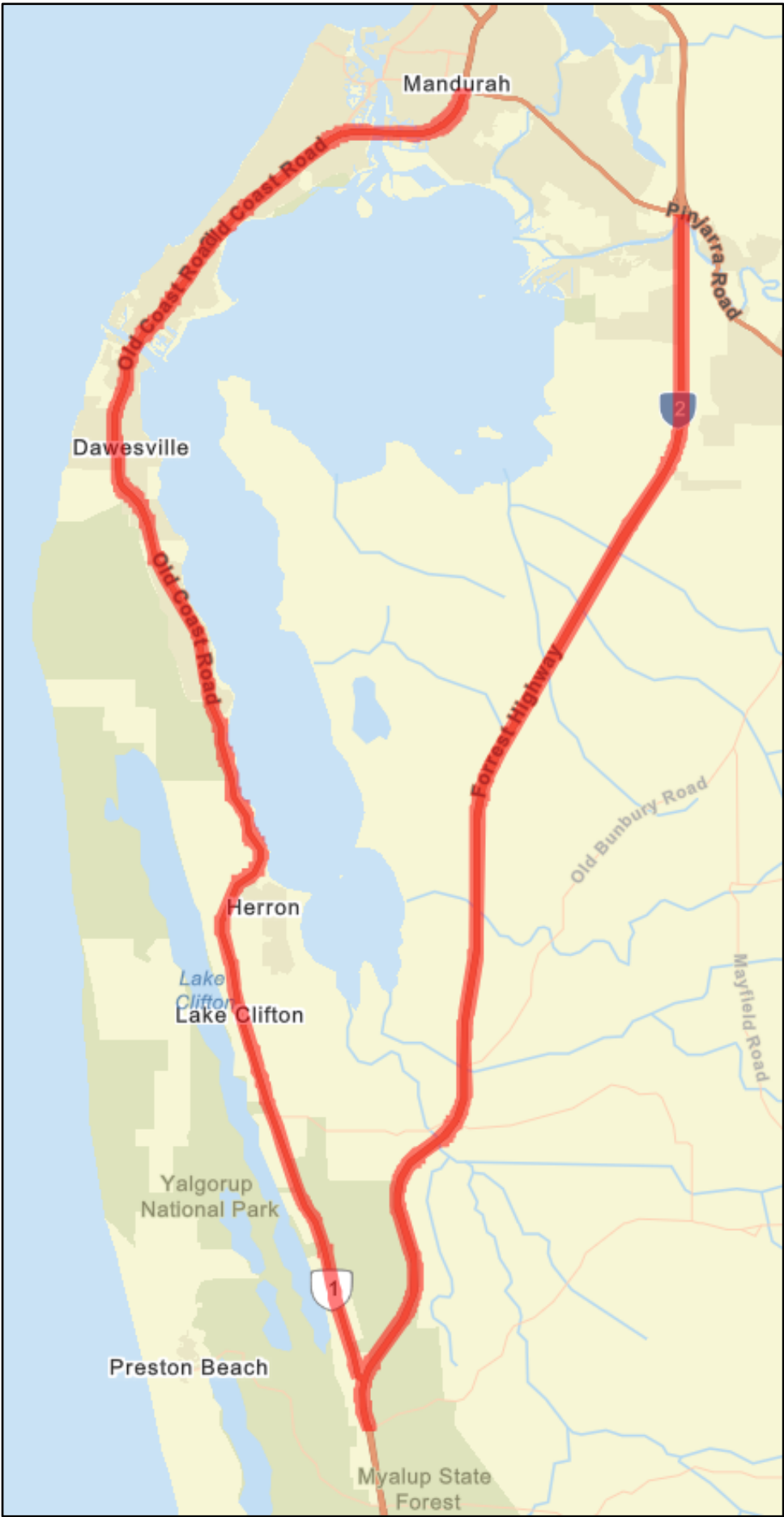
Appendix 2: Henderson Industrial Estate



Appendix 3: Metropolitan Area Map



Appendix 4: Mandurah Curfew Map



Appendix 5: Roads Approved for 3 in Convoy

The following roads are approved for 3 RAVs to travel in convoy:

Road Name	Road Number	Local Government	From	To
Bandya Rd	6070009	Laverton	Garden Well Mine Site	Lancefield Diversion Rd
Bell St	8130298	Port Hedland	Great Northern Hwy	SLK 0.40
Goldfields Hwy	H049	Leonora / Wiluna	Mt Keith Access Rd	Mt Magnet Leinster Rd
Great Northern Hwy	H006	Various	Wubin	Wyndham
Hamersley Rd	8110038	Ashburton	Nanutarra Munjina Rd	Eliwana Mine Access
Lancefield Diversion Rd	6070110	Laverton	Bandya Rd	Leonora Laverton Rd
Leonora Laverton Rd	M022	Leonora / Laverton	Lancefield Diversion Rd	Goldfields Hwy
Marble Bar Road	M030	East Pilbara	Great Northern Hwy (Newman)	Roy Hill, Christmas Creek & Cloudbreak Mine Access
Mt Magnet Leinster Rd	M069	Leonora / Sandstone / Mt Magnet	Goldfields Hwy	Great Northern Hwy
Munjina Roy Hill Rd	8120232	East Pilbara	Great Northern Hwy	Marble Bar Rd
Nanutarra Munjina Rd	M029	Ashburton	Great Northern Hwy	Hamersley Rd
Pippingarra Access Rd	812Z024	East Pilbara	Wodgina Access Rd	Mine Access
Port Hedland Rd	H051	Port Hedland	Great Northern Hwy	Wedge St
West Angelas Rd	8120192	East Pilbara	Great Northern Hwy	South Flank Mine Access (-22.940751, 118.822148)
Wodgina Access Rd	8120059	East Pilbara	Great Northern Hwy	Pippingarra Access Rd

Appendix 6: Roads Approved for 4 in Convoy

The following roads are approved for 4 RAVs to travel in convoy:

Road Name	Road Number	Local Government	From	To
Bandya Rd	6070009	Laverton	Garden Well Mine Site	Lancefield Diversion Rd
Bell St	8130298	Port Hedland	Great Northern Hwy	SLK 0.40
Goldfields Hwy	H049	Leonora	Leonora Laverton Rd	Mt Magnet Leinster Rd
Great Northern Hwy	H006	Various	Mt Magnet	Wyndham
Hamersley Rd	8110038	Ashburton	Nanutarra Munjina Rd	Eliwana Mine Access
Lancefield Diversion Rd	6070110	Laverton	Bandya Rd	Leonora Laverton Rd
Leonora Laverton Rd	M022	Leonora / Laverton	Lancefield Diversion Rd	Goldfields Hwy
Marble Bar Road	M030	East Pilbara	Great Northern Hwy (Newman)	Roy Hill, Christmas Creek & Cloudbreak Mine Access
Mt Magnet Leinster Rd	M069	Leonora / Sandstone / Mt Magnet	Goldfields Hwy	Great Northern Hwy
Munjina Roy Hill Rd	8120232	East Pilbara	Great Northern Hwy	Marble Bar Rd
Nanutarra Munjina Rd	M029	Ashburton	Great Northern Hwy	Hamersley Rd
Port Hedland Rd	H051	Port Hedland	Great Northern Hwy	Wedge St
West Angelas Rd	8120192	East Pilbara	Great Northern Hwy	South Flank Mine Access (-22.940751, 118.822148)

Appendix 7: Burrup & Gap Ridge Precinct

