

South Western Highway Intersection Upgrades - Armadale

Roadworks Start – 12 February to Mid-2024

Overview

Main Roads will be upgrading intersections on South Western Highway at Dickens Place, Stone Street, and Eleventh Road in Armadale to facilitate access to the Armadale light industrial area on the east of the rail line, when the Byron Road level crossing is closed in mid-2024 as part of the METRONET Byford Rail Extension Project.

The intersection improvements will start from 12 February, and will maximise safety and provide efficient access by:

- Installing traffic lights at the intersections of Eleventh Road and South Western Highway, and Stone Street and South Western Highway, and
- Adding north and southbound turning lanes on South Western Highway and left and right turn lanes on Dickens Place to improve access into and out of Dickens Place.

February to mid-April 2024 - Work Program and Traffic Control

Main Roads' contractor Raubex is establishing site offices at the Dickens Place and South Western Highway intersection. Service location works have also begun between Talus Drive and Rails Crescent.

From 12 February, traffic management and equipment will be in place and moving along the verges of South Western Highway. This includes traffic cones, reduced speed signage and plant and machinery use between:

- Talus Drive and Cooliabberra Drive, and
- Mitchell Street and Rails Crescent.

Road users should be aware that they will not be able to use the verge where traffic management is located along South Western Highway. Existing pedestrian path access will be maintained along South Western Highway. Where required tree pruning will be undertaken and at Stone Street one tree will be removed to accommodate the improvement works.

Work hours will be from **7am to 5pm Monday to Friday until mid-April**. One traffic lane will be maintained in each direction at all times, unless specific activities like tree pruning require a closure for safety.

Mid-April to 31 May - Nightworks

From mid-April to 31 May, to minimise disruption to traffic flows on South Western Highway during the day and enable the roadworks to be completed, nightworks will be required. Details about times and possible impacts for traffic and adjacent residences and businesses will be provided closer to that time. The work will be undertaken according to an approved noise management plan when the nightworks begin.

Further information

Please contact Main Roads' Customer Information Centre on 138 138 or enquiries@mainroads.wa.gov.au and a project team member will respond to your enquiry.

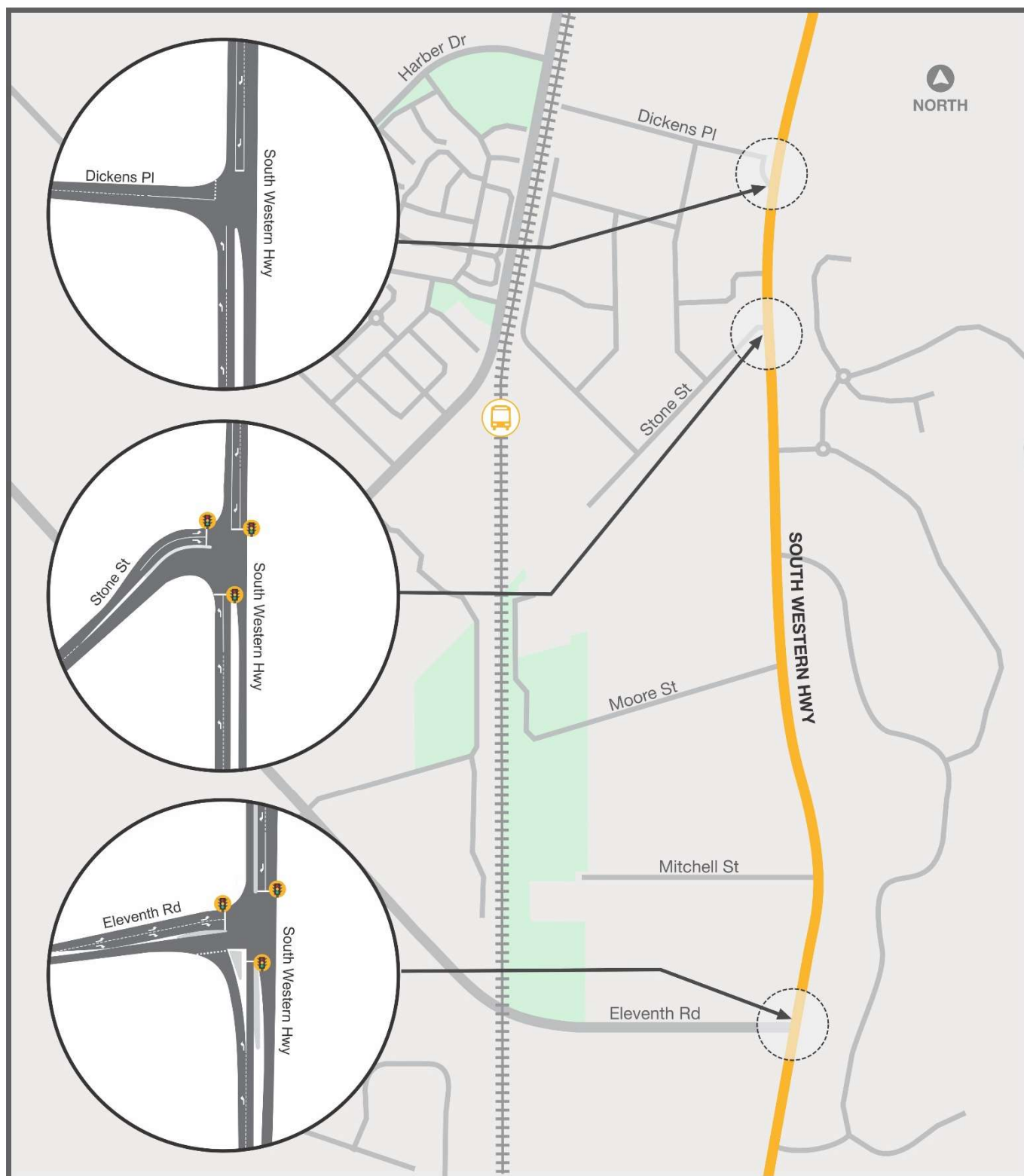


Image: Overview of Intersection Upgrades