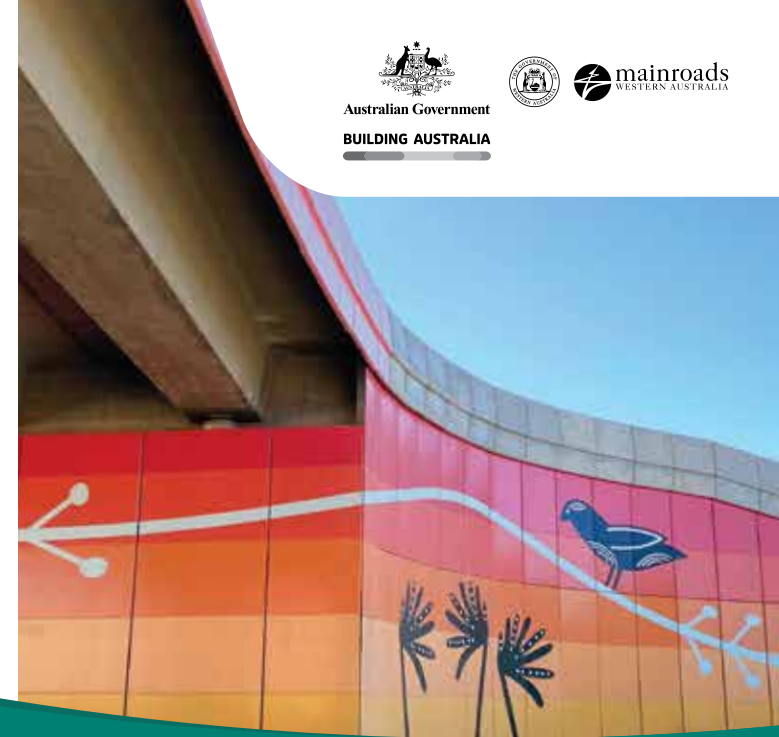


The Highway contains ...

Find out more about the Wilman Wadandi Highway



Scan the QR code to discover how the Wilman Wadandi Highway benefits your journey.

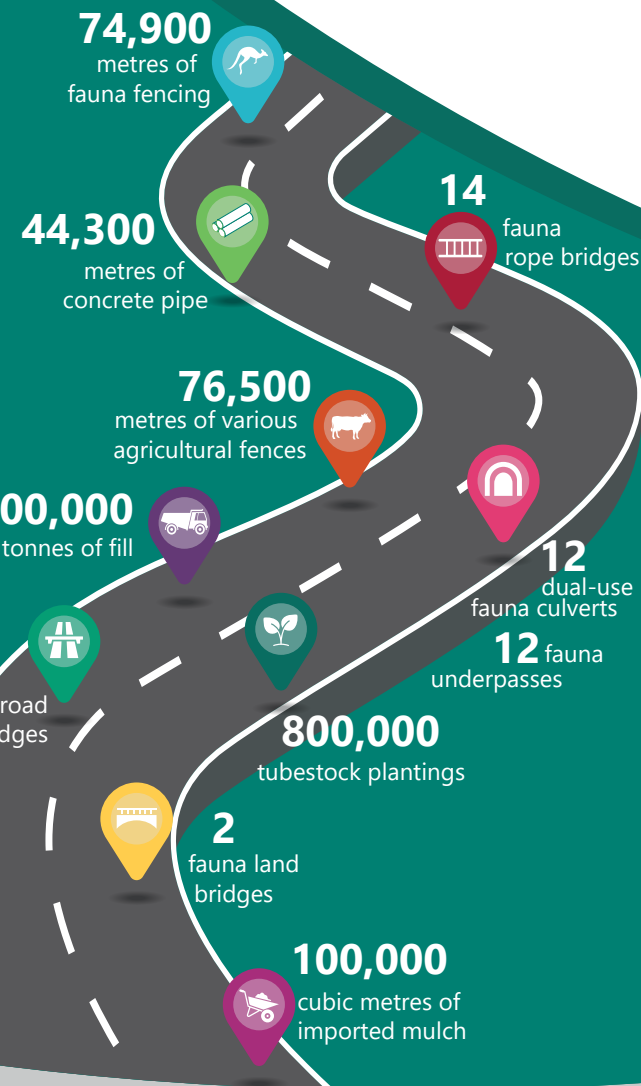


Wilman Wadandi Highway

THE BUNBURY OUTER
RING ROAD PROJECT

The Wilman Wadandi Highway is a 27-kilometre four-lane, high-standard road linking Forrest Highway to Bussell Highway. This is the biggest transport infrastructure project ever undertaken in the South West, delivering a safe and efficient road network for freight, tourists and locals alike.

The project has been more than just a road. Through local and Aboriginal procurement, unemployed entry-level workforce recruitment and the Aboriginal Employment Strategy, this project has brought significant economic and social outcomes to the South West beyond any other infrastructure project.



Speak to a person
138 138



Email the team
enquiries@mainroads.wa.gov.au



Visit the website
www.mainroads.wa.gov.au/BORR

WILMAN WADANDI HIGHWAY

Northern project area

- 1 Paris Road and Clifton Road interchange
- 2 Raymond Road interchange
- 3 South Western Highway (north) interchange
- 4 Discovery Road intersection
- 5 Overpass of Golding Crescent, Ferguson River, Freight Rail and Boyanup-Picton Road

Central project area

- 6 Willinge Drive intersection

Southern project area

- 7 South Western Highway (south) intersection
- 8 Lillydale Road intersection
- 9 Yalinda Drive overpass
- 10 Bussell Highway Y-interchange

Local resident benefits

- Providing the road infrastructure to enhance Greater Bunbury's position as an industrial hub for the South West region.
- Reducing the need for heavy vehicles to mix with local traffic on local roads by redirecting 10,000 to 15,000 vehicles a day onto the new road.
- Reduce local congestion and create more reliable journey times for all road users.

Commuter benefits

- A safer road system reducing congestion and interaction between freight and local traffic in central Bunbury.
- More reliable journey times for all road users removing the need to navigate through 13 sets of traffic lights and one rail crossing.
- Provide travel savings of between 11 and 18 minutes, depending on the destination and peak traffic conditions along the alignment.

Pedestrian and cyclists benefits

- 17 km of new path network and Principal Shared Path (PSP).
- PSP from Willinge Drive to Lillydale Road along the Highway.
- Shared Path network along Willinge Drive between Wilman Wadandi Highway and South Western Highway.
- Shared Path network along the new section of Lillydale Road to Bussell Highway.
- Shared path and at-grade crossing of the Highway at Harris Road.
- Shared paths at connecting roads and cyclist facilities at roundabouts to allow safe movement of cyclists across the Highway.

Freight and productivity benefits

- Improved freight efficiency with a more direct route to Bunbury port as well as existing and proposed industrial areas east of Bunbury.
- Extending the service life of existing arterial roads, currently used by trucks, minimising future local upgrade treatments.

Economic and industry sustainability

- \$539m spent with local South West businesses.
- \$52.5m spent with Aboriginal business.
- 9.78% of companies awarded contracts over \$50,000 were awarded to Aboriginal businesses.
- 11% of the project's construction workforce were Aboriginal people.
- 11% of the construction workforce were entry level positions
- 191 participants completed the Yaka Dandjoo program that trained and upskilled unemployed and job transitioning people in the community.

Fauna protection

- 14 fauna rope bridges installed to maintain fauna connectivity across the alignment, with nine in Gelorup.
- 24 fauna underpasses and two fauna land bridges built to enable wildlife to safely travel across the road.
- Fauna fencing installed along the majority of the alignment with innovative one-way 'gates' positioned at key locations to release any kangaroos that may find their way into the road reserve.

LEGEND

- Wilman Wadandi Highway
- Associated local road upgrades
- Path network
- Bridge
- New cul-de-sac