

Tonkin Gap Project and Associated Works



Works are well and truly humming along across the project site, with Tonkin Gap's team of 690 individuals working hard to deliver the long-anticipated upgrades to Tonkin Highway. Upon completion, the upgrades will improve safety and efficiency, alleviate pressure on the transport network and reduce travel times.



Additional lanes on Tonkin Highway in both directions – as well as dedicated on and off-ramp lanes at some interchanges.



Rail enabling works – providing a rail corridor within the Tonkin Highway median between Railway Parade and Marshall Road, two dive structures for the railway to enter and exit the highway median, two rail bridges over Morley Drive and a bus interchange bridge at Broun Avenue.



Shared path connectivity – cyclists will be able to ride seamlessly from Abernethy Road in Kewdale all the way north to Muchea using the upgraded shared path.



Upgraded interchanges – the upgrades at Guildford Road and Great Eastern Highway will improve driver safety.



Community space for all to enjoy – as part of the works, we are providing improvements to an area under Redcliffe Bridge for the local community.

While our crews deliver these upgrades to the community, there will be road closures, night works and other construction impacts within the project area – but don't worry, we will keep you updated. Follow us on Facebook 'Tonkin Gap Project' to find out the latest information on our works.

LOOKING AHEAD

LATE 2022

- New Guildford Road and Railway Parade bridges open
- All Tonkin Highway southbound traffic shifted onto new highway from Railway Parade to Redcliffe Bridge
- Victoria Street pedestrian bridge complete
- Dunstone Road bridges complete (including noise walls)
- Cherry Court works complete
- Southern dive (near Railway Parade) complete

EARLY 2023

- Tonkin Highway northbound off-ramp to Guildford Road open
- Traffic on the new Redcliffe Bridge
- Traffic permanently shifted onto completed Broun Avenue combined road and bus bridge over Tonkin Highway
- Northern dive (near Marshall Road) complete
- Tonkin Highway northbound and southbound between Hepburn Avenue and Reid Highway on final alignment complete

MID 2023

- Great Eastern Highway westbound and eastbound works complete
- Selby Park remediation works complete
- Tonkin Highway northbound switched on to ultimate Tonkin Highway southbound between Dunreath Drive and Guildford Road

LATE 2023

- Landscaping and revegetation complete
- METRONET works ongoing within the median of Tonkin Highway and at railway stations

Project develops innovative design solutions



The Project team is focused on innovative design solutions to benefit the community.

Stanton Road is an important connection for community, schools and businesses in Belmont. During the design stage it was identified that Stanton Road would need to be raised to give the new widened Tonkin Highway corridor a consistent bridge clearance.

Doing this work would have meant closing Stanton Road for about three months.

Design and Construction Interface Manager, Dirk Baumgartel said the task fell to designers to be innovative and come up with a solution.

“The team was able to develop a solution, which involved lowering Tonkin Highway instead,” he said.

“This didn’t come without design and technical challenges given the high groundwater levels, however the design we ended up with significantly enhances the road network.”

Did you know ?

The 53 metre nose cone used to launch the new Redcliffe Bridge was the longest nose cone ever used on an incrementally launched bridge in Australia.

Another design initiative for the project included removing the need for a temporary pier in the Swan River.

Originally, a temporary pier was required to provide support for the incremental launching of the precast Redcliffe Bridge segments. However, the temporary pier may have disturbed the riverbed and been an obstacle people using the river would have had to navigate, so the project team suggested using a longer steel launch girder, negating the need for it.

Working with the METRONET Morley-Ellenbrook rail team

Aside from addressing the bottleneck on the highway, the Tonkin Gap Project is also delivering the Associated Works for the new Morley-Ellenbrook Line railway.

Main Roads Senior Project Director Rob Arnott said the teams will work together to ensure the community is informed.

“We understand there has been a lot of work on Tonkin Highway in recent years. Having the Tonkin Gap team complete works for the Morley-Ellenbrook Line railway, will minimise disruptions along the highway when METRONET starts,” he said.

“For residents around the future Morley, Noranda and Malaga stations there will be more work as METRONET builds the stations. Before this work start, you will hear from

the METRONET community team who will be managing community engagement.”

Dive structures

The Tonkin Gap team has been working on two dive structures under Tonkin Highway, one north of Marshall Road, Whiteman Park and one north of Railway Parade, Bayswater.

These structures are where the train will ‘dive’ under Tonkin Highway entering and exiting the highway median, which will serve as the railway’s main north to south alignment, servicing the stations at Morley, Noranda and Malaga.

At Bayswater, the southern dive is approximately 500 metres long and at its deepest point is seven metres below ground level.

METRONET will complete the fit-out works including laying the track, overhead wiring, signalling and other technical systems required to operate the railway.

At the northern dive the team has built the outer walls and is halfway through the excavation and building the concrete floor slabs.



Tonkin Gap provides hands-on experience to Redcliffe Primary School students

Redcliffe Primary School Year five and six students were treated to an insight into the many construction career opportunities available to them when the Tonkin Gap project team visited.

Taking time out of their busy schedule, the project team jumped at the chance to work with the students to explain the work we're doing along Tonkin Highway in front of the primary school.

Tonkin Gap Construction Director, Jonathan Lestone said engaging with young students was a great opportunity for them to learn about building major infrastructure.

The students participated in hands-on activities to learn about engineering, surveying and geotechnical engineering, as well as other facts of major project work.

"With the Tonkin Gap Project on their doorstep, this initiative also gave the parents and students the time to ask about the project and what they will



see during the next couple of years," he said.

"The project doesn't just focus on delivering the infrastructure but also considers Aboriginal participation, diversity, the environment and community."

Students were able to operate noise and vibration monitors, test the density of different soils and build a miniature size model of the new Redcliffe Bridge.

Heritage trail approved as part of project

Infrastructure projects that have the potential to incorporate historic sites into their landscaping create an opportunity for greater awareness and connection to our Aboriginal and European history among the community.

Tonkin Gap Alliance Project Director Peter Hopfmueller said the project had engaged an anthropologist to interview local families and gather stories to develop a heritage trail.

"We did this in addition to working with anthropologists and the Whadjuk Noongar Traditional Owners who helped us fully understand the history of the project area and its significant sites," he said.

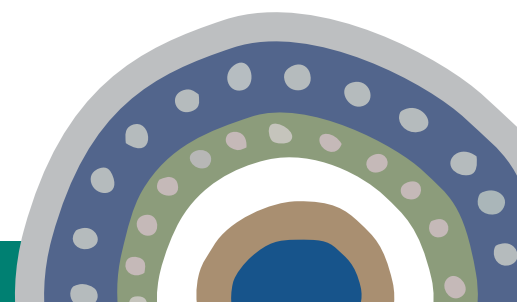
"Recognition, respect and inclusion of all cultures is an important focus for the Tonkin Gap Project.

"It is important to share Aboriginal and European culture and we are pleased we can contribute in this way."

Broun Avenue

The Broun Avenue bridge team has completed the retaining walls which allow the Tonkin Highway southbound lanes to be shifted to make space for the future station in the median. The bridge abutments have been installed and bridge piers in the central median are being built.

The final 18 bridge beams have been installed and traffic has switched over to its final configuration. The bus interchange bridge will be handed to METRONET for fit-out works.



Greening the Gap

Across the project area more than 291,000 square metres (the equivalent of more than 40 soccer pitches) will be revegetated, with works starting this winter and progressing throughout the project as sections of work are completed.

A mix of plant species were selected in consultation with City of Bayswater and City of Belmont to ensure they are native to the replanting areas. We will also be planting species that are used for Aboriginal bush medicine and bush tucker.

As we move towards finalising some of the areas on Tonkin Gap, people will start to see planting happening. Across the project, our revegetation program sets out to:

- provide shade, protection and connectivity for native animals
- help minimise the visual impact of the road on adjacent residents through the provision of vegetated screens
- improve the overall attractiveness of the roadway, screening residential and industrial developments, and,
- prevent soil erosion.

One of the other areas where people will see revegetation and natural enhancements is under Redcliffe Bridge as part of the upgraded community space. This area is being designed with community in mind, guided with the input from residents, the Cities of Bayswater and Belmont and other State Government agencies.

The proposed community space on the Bayswater side is still being considered but it will be released to community in the coming months.



Keeping the community informed

Keeping up communication with people who are impacted by works is a full time undertaking and it has been a hive of activity in recent weeks.

Recent events have allowed the Tonkin Gap team to share the latest information and to answer questions.

The biggest of these events was our Open House event on July 26. Community and Stakeholder Engagement Manager, Fiona Bell said the Tonkin Gap Project was complex with people living and working in very close proximity to construction sites.

“Traffic disruptions and noise are intrusive, which is why we are always keen to talk to people who may be at the pointy end of this work,” he said.

“We engage in various ways but some of the best outcomes are achieved when we do these in a face-to-face way such as the Open House.

“People come in and chat directly with us and we can provide detailed and relevant responses.”

As well as the Open House, we deliver 3000 notifications to letterboxes every month, do regular updates on Facebook, site tours for the project’s key stakeholders as well as face-to-face engagement with residents.

How do you like to receive communications?

Scan the QR code if you would like to sign up for monthly construction updates.



This document can be provided in alternative formats upon request