



Australian Government



September 2022

Tonkin Gap Project and Associated Works Construction Update

This update contains important information about upcoming works near you. Works below are anticipated for September but are subject to change, particularly with the wet weather. Some works will need to be undertaken on Sundays. Please drive carefully and observe the road signage. There is potential for longer than usual travel times and we encourage road users to plan ahead. Up to date information will be available through the Main Roads website and our Tonkin Gap Facebook page.

Dunstone Road westbound closure for bridge works

From Monday, 19 September, Dunstone Road westbound will be closed for 21 days. Dunstone Road eastbound will remain open while we complete strengthening works on the existing bridge. In order to complete these strengthening works, we will need to build a scaffold on the existing shared path so we can work on the soffit (lower exterior surface of the existing bridge). As a result, the shared path will be detoured onto the road.

Tonkin Highway between Redcliffe Bridge and Dunreath Drive

Victoria Street footbridge

Unfortunately, due to the recent weather and engineering issues associated with finalising the connection of the two bridge components, works are taking longer than anticipated which has delayed the opening date. These works focus on the concrete stitch pours along the bridge deck above the central joint, and at either abutment. We aim to open the footbridge to pedestrians and cyclists end-September. We understand this extended closure will inconvenience some residents and we apologise.

Redcliffe Bridge

There will be ongoing earthworks in the area to backfill and build the road approaches at both ends of Redcliffe Bridge. Our truck site exit and entry ramps will soon be decommissioned, this is so we can start building the permanent ramps to and from Great Eastern Highway. There will be more trucks on the local road network in Ascot, including Matheson. Dust and vibrations may be noticeable during this work.

Great Eastern Highway works

Works to prepare for the next traffic change on Great Eastern Highway, between Tonkin Highway and Lyall Street, are continuing. This includes removing the existing footpath so we can build the new lanes and tie-in the new Tonkin Highway northbound off-ramp. We will also start to lay asphalt for the future Great Eastern Highway off-ramp from Tonkin Highway northbound, as well as on Great Eastern Highway. There will be ongoing earthworks in the area which may cause noise, vibrations and dust. Works will be during the day and at night. Keep an eye out for detailed information on the upcoming Great Eastern Highway traffic impacts in the October Update and on the Tonkin Gap Facebook page.

Tonkin Highway between Guildford Road and Redcliffe Bridge

We will continue barrier, profiling and asphaltting works along Tonkin Highway between Guildford Road and Redcliffe Bridge. On Friday, 9 September we plan to work from 8pm to 5am adjacent to Tonkin Highway, between Dunstone Road and Redcliffe Bridge. There will be lane closures, while we complete tie-in works ahead of switching southbound traffic onto the new lanes in October. As the date may change, we suggest staying up to date by visiting <https://www.mainroads.wa.gov.au/tonkin-gap/#roadworks>.

Railway Parade and Guildford Road bridges

Intermittent lane closures at night will be required on Railway Parade and Guildford Road, while we complete bridge works and remove the temporary bridge protection. Date and times of lane closures can be found on the Main Roads website <https://www.mainroads.wa.gov.au/tonkin-gap/#roadworks>.

Noise wall progress

We will start piling works to build the concrete noise wall footings along The Court and you will also start to see noise walls being installed on the Redcliffe Bridge. We are continuing to paint the noise walls along Tonkin Highway southbound between Dunstone Road and the northern entrance to the existing Redcliffe Bridge.

Vegetation clearing

To continue our noise wall installations, we need to do further clearing in the area adjacent to the Great Eastern Highway off-ramp from Tonkin Highway southbound (map 1). We always aim to keep as much vegetation as possible, however, the clearing in this area is to accommodate the noise walls and Great Eastern Highway off-ramp realignment. During the clearing, mulching and removal of topsoil in the coming weeks, there may be an increase in dust, but we will aim to keep this to a minimum.



Map 1

Broun Avenue works

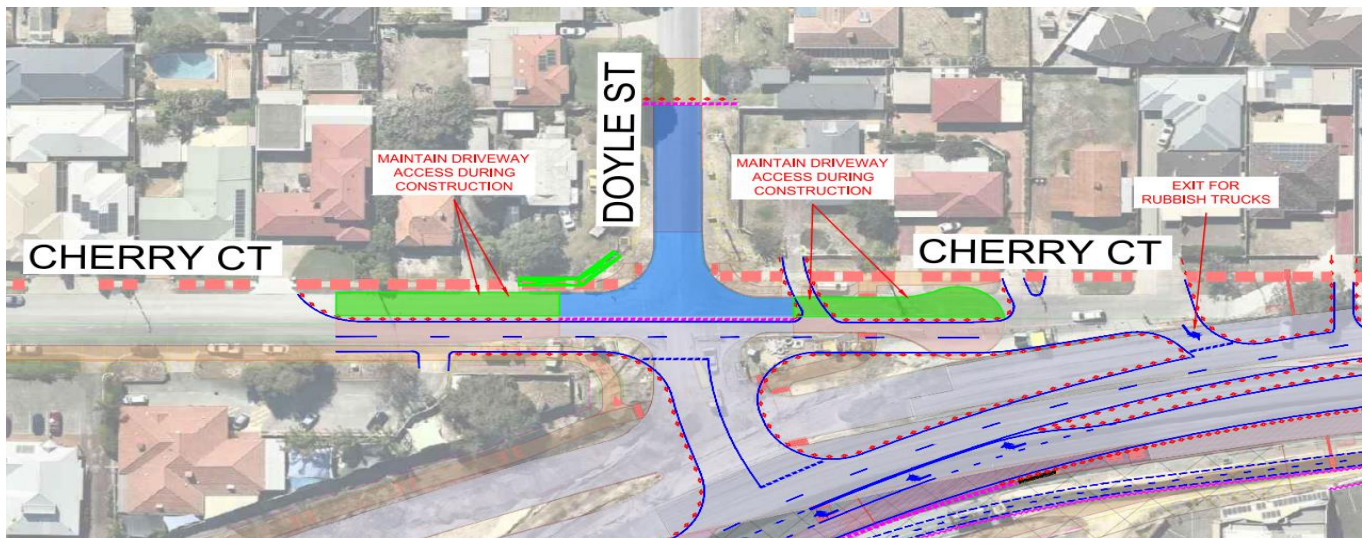
We successfully installed 18 beams for the second stage of Broun Avenue bridge late August, and we will now start to build the bridge deck. There will be ongoing morning concrete pours, and intermittent weekend works while we finish this section of the bridge. Vibrations and noise may be noticeable in the area.

Super Stage 2.2

We will be switching traffic onto the new Tonkin Highway southbound lanes between Morley Drive and Broun Avenue in mid-September. This is so we can complete works in the Tonkin Highway median north of Broun Avenue. Prior to the traffic switch, there will be night works including water blasting and traffic barrier installations. There will also be noise associated with these works. Stay up to date on the Main Roads website.

Cherry Court

We are building a temporary intersection at Doyle Street and Broun Avenue. When this is done, the team will open the Doyle Street/Cherry Court intersection, however Doyle Street will be closed in this stage (map 2). Pavement and barrier works will also continue in the area, with access maintained to properties at all times. Once completed, Cherry Court will tie into the new Broun Avenue bridge and connect to the new shared path that runs along Tonkin Highway.



Map 2

Tonkin Highway between Benara Road and Collier Road

Traffic barrier removal

Throughout September we will remove the temporary steel traffic barriers along Tonkin Highway between Collier Road and Morley Drive. While this is noisy work, we need to do it at night as lane closures will be required.

Road crossing installation

We will start to install three service road crossings between Morley Drive and Benara Road. This will involve working on either side of Tonkin Highway, so we can tie in underground service cables. While we complete this work, there may be lane closures required on Tonkin Highway.

Benara Bridge Gantry signage

We need to close lanes on Tonkin Highway northbound at night between Morley Drive and Reid Highway for three consecutive weeks in September while we re-install the directional gantry signage near Benara Road.

From Monday, 5 September to Wednesday, 7 September from 10pm to 4am, the team will carry out bridge modification works so the new sign can be installed. We will then install the sign from Monday, 12 September to Wednesday, 14 September from 10pm to 4am. Once installed, we will need to do bridge reinforcement works on Monday, 19 September from 10pm to 4am.

Dive structures update

Northern dive structure

It's full steam ahead, as we continue to build the walls and the concrete bases at both ends of the dive structure. The team will also start to prepare for the installation of the concrete precast planks which will form the surface for Tonkin Highway. Earthworks in the area include, pavement works, drainage and service installation.

Southern dive structure

The team will finish the remaining underground concrete works for the dive structure before starting to lay asphalt for the new Tonkin Highway northbound lanes over the structure.

Road maintenance

Recent wet weather has interrupted our regular line marking maintenance and pavement repair works along Tonkin Highway between Dunreath Drive and Hepburn Avenue, as well as on Broun Avenue and Great Eastern Highway. We'll do this work at night as we cannot close lanes on Tonkin Highway during the day. To stay up to date on upcoming works visit <https://www.mainroads.wa.gov.au/tonkin-gap/#roadworks>.

Out of hours works this month

In September our crews will be working out of hours (7pm until 7am and the occasional Sundays) in our project area and along Tonkin Highway, between Dunreath Drive and Hepburn Avenue. Specific details, including dates and locations, will be posted on the Facebook page and the Main Roads website.

The works will occur at:

- Tonkin Highway between Redcliffe Bridge and Dunreath Drive
 - Barrier works, service cabling, road works and traffic management
- Tonkin Highway between Guildford Road and Redcliffe Bridge
 - Traffic management, barrier works and asphaltting
- Great Eastern Highway, between Epsom Avenue and Coolgardie Avenue
 - Intermittent night works in both directions
 - Barrier works, asphaltting, street light removal and traffic management
- Broun Avenue, between Embleton Avenue and Beechboro Road North
 - Traffic management, services work, early concrete pours
 - Intermittent Sunday works
- Tonkin Highway between Hepburn Avenue and Collier Road
 - Tonkin Highway widening, pavement works, slipform traffic barrier installation, traffic barrier works and road works
- Railway Parade and Guildford Road, near Tonkin Highway
 - Intermittent night works
 - Early morning concrete pours
- Dunstone Road
 - Early morning starts during the 21-day closure

What can I expect?

- Works and vehicle movements may be noticeable across all areas. Noise and vibration management measures are in place, including use of the quietest equipment reasonably available.
- Works will be in accordance with a noise management plan approved by your local government authority. If you have concerns about our works, please call 138 138 (24 hours).

For more information on Tonkin Gap

W: <https://www.mainroads.wa.gov.au/tonkin-gap/>

E: enquiries@mainroads.wa.gov.au

T: 138 138 (24 hours)

FB: <https://www.facebook.com/groups/tonkingap/>

For more information on the Morley-Ellenbrook Line

W: www.metronet.wa.gov.au

E: info@metronet.wa.gov.au

T: 08 9326 3666

FB: <https://www.facebook.com/groups/morley.ellenbrook>