

May 2022



Australian Government



mainroads
WESTERN AUSTRALIA

BUILDING OUR FUTURE

Tonkin Gap Project and Associated Works Construction Update

This update contains important information about upcoming works near you. Works below are anticipated from May but are subject to change. Some works will need to be undertaken on Sundays. Please drive carefully and observe the road signage. There is potential for longer than usual travel times and we encourage road users to plan ahead. Up to date information will be available through the Main Roads website and our Tonkin Gap Facebook page.

Railway Parade bridge beam lift and 28-day closure

From Friday, 10 June until the morning of Monday, 13 June we will be installing bridge beams for the western Railway Parade bridges. We will be shifting traffic onto the Tonkin Highway northbound lanes and reducing traffic to a single lane in each direction, between Redcliffe Bridge and north of Guildford Road, so we can install the bridge beams. We will carry out this work on 10, 11 and 12 June, from 8pm to 7am. Ramp closures will also be in place. During the day, Tonkin Highway will open in both directions and the beams will be lifted from Railway Parade.

Railway Parade closure

To prepare for the beam installation we will be closing Railway Parade in both directions between Bassendean Road to Moojebing Crossing from 23 May to 20 June. This is so we can store the bridge beams, assemble and disassemble the crane and lift the beams from Railway Parade.

Midland rail weekend shut

To allow for the bridge beams to be safely lifted over the train line, the Midland Line will also be closed from 11 to 13 June. Train replacement bus services will operate while train services are cancelled. For more details, including the closure times and operation of train replacement services, please visit transperth.wa.gov.au closer to the date.

Detours

Please follow on-road signage, and to view specific times and all detour maps visit

<https://www.mainroads.wa.gov.au/tonkin-gap/>




Modified Tonkin Highway southbound ramps from Great Eastern Highway

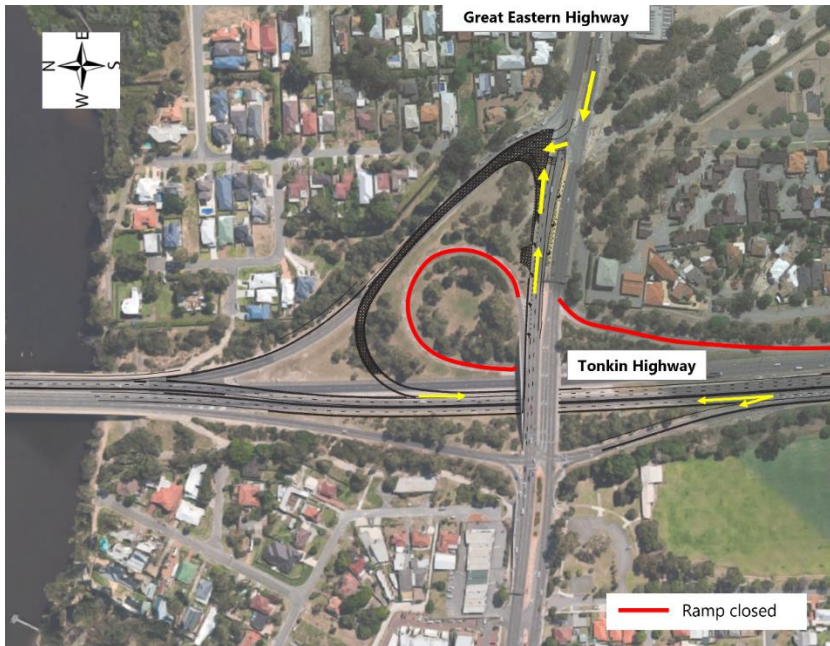
You may have noticed that traffic has been shifted west on Tonkin Highway between Dunreath Drive and Great Eastern Highway, and from early May you will access Tonkin Highway southbound from a temporary ramp (map 1).

When the temporary on-ramp is opened, we will close the existing on-ramps to Tonkin Highway southbound from Great Eastern Highway. In early May, before we switch traffic onto the temporary ramp, there will be night works on Tonkin Highway and Great Eastern Highway, including signal modifications. To complete the traffic switch, we will be working from 7pm to 7am on Saturday, 7 May. Please keep up to date on the Tonkin Gap Facebook page or Main Roads WA website for details. Once traffic has been switched, we will rebuild and widen Tonkin Highway southbound lanes and ramps. There will be major earthworks in the area which may cause noise, vibrations and dust. Most of the works will happen during the day, however, there will be the need for intermittent night works. There will be pumps running 24/7 during the works.

www.mainroads.wa.gov.au



 138 138
 enquiries@mainroads.wa.gov.au
 www.mainroads.wa.gov.au



Map 1

Great Eastern Highway realignment

We will be working on Great Eastern Highway between Moreing Street and Central Avenue during the day and at night to realign Great Eastern Highway and tie in the new Tonkin Highway northbound exit ramp. This will include earthworks on the westbound verge between Tonkin Highway and Lyall street and Morrison Street cul-de-sac. Tonkin Highway ramps and lane closures will be intermittent.

Upcoming roadworks

There are closures, roadworks and nightworks scheduled soon on Great Eastern Highway. Make sure you stay up to date on our Facebook page, visit the Main Roads website or read the on-road signage for details.

Intermittent closures on Dunstone Road

Intermittent closures or stop/slow on Dunstone Road will continue. This is so we can complete roadworks, line marking, permanent barrier works, and bridge works on Tonkin Highway that we cannot safely complete in live traffic.

Guildford Road bridges

Intermittent nightworks on Guildford Road continue to be required while we complete the construction of both Guildford Road bridges. This requires us to, at times, reduce traffic to one lane in each direction.

What's involved in building a road?

We are building new roads across the project, and there are many stages to this. While we are asphaltting you may notice vibrations when we are compacting each layer, a strong diesel smell when the prime is sprayed and noise from the trucks. Depending on where these works are, we may also have to do the work at night, especially if it's on Tonkin Highway. This is in line with the times that we are allowed to close lanes. Unfortunately, we also can't work when it's wet, so during the wetter months our works schedule may change rapidly, sometimes requiring completion on a Sunday.

Why do I feel vibrations?

Heavy machinery may generate vibration at various stages of construction. Experiencing vibration does not mean structural damage to your property will occur, however, you may feel it. There are measures we put in place to minimise vibrations. Learn more about what causes vibration and how we're managing it in our [Vibration Fact Sheet](#).

Broun Avenue is now open

Thank you for your patience while we closed Broun Avenue to complete works on the new bridge and deconstruct the existing bridge. On 26 April we opened Broun Avenue to traffic, pedestrians, and cyclists, but it still looks a little different. Broun Avenue is one lane in each direction and access between Doyle Street and Broun Avenue remains closed for through traffic.

Out of hours work will continue and we will now start to build the second stage of the bridge. Keep an eye out for the bridge piers and abutments being built. Visit transperth.com.au for details on bus routes in the area.

Benara Road directional signage

We will be re-installing the directional signage near Benara Road. There will be a night closure of Tonkin Highway northbound to undertake these works. Stay up-to-date on details via the Main Roads website or Tonkin Gap Facebook page.

Early concrete pours required

Early concrete pours across the project are still required. The locations of these early pours include the northern dive structure (north of Marshall Road), rail bridges at Morley Drive, Broun Avenue, southern dive structure (north of Railway Parade)

Guildford and Railway Parade bridges over Tonkin Highway, Dunstone Road bridges and at the casting yard in Ascot. The start time of these pours will vary but could be as early as 3am.

Noise wall progress

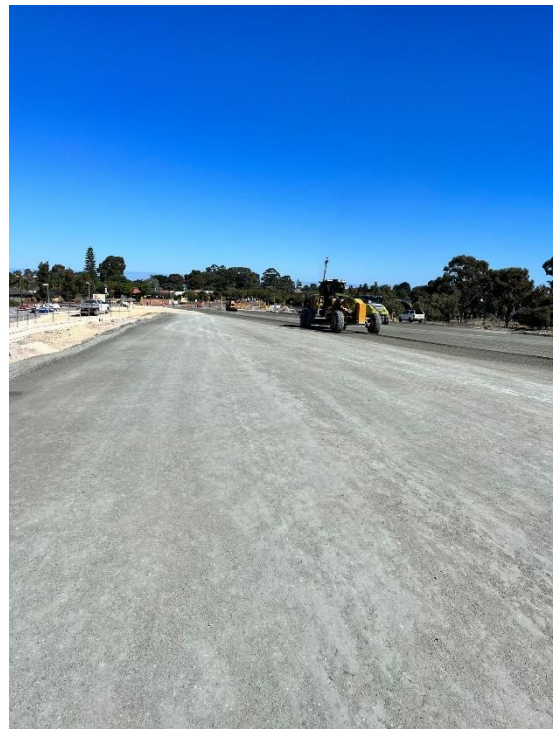
If you live in the City of Belmont you will start to see noise walls going up near Redcliffe Primary School, Greenshields Way and Selby Park.

First Selby Park footbridge is up

The first Selby Park footbridge is up. This will be part of the upgraded principal shared path on the west side of Tonkin Highway. In May we will lift the second footbridge into place.

Stay vigilant and report suspicious behaviour

We need your help! There have been a number of break-ins across our sites. If you see or hear anything suspicious, please call 138 138 or the police. Your help fighting crime in the area is appreciated.



Broun Avenue



Selby Park footbridge

Out of hours works this month

In May our crews will be working out of hours (7pm until 7am and the occasional Sundays) in our project area and along Tonkin Highway, between Dunreath Drive and Hepburn Avenue. Specific details, including dates and locations, will be posted on the Facebook page and Main Roads WA website.

The works will occur at:

- Tonkin Highway, between Redcliffe Bridge and Dunreath Drive
 - Intermittent night works in both directions
 - Barrier installation, line marking, temporary pavement construction and traffic switch
- Great Eastern Highway, between Epsom Avenue and Coolgardie Avenue
 - Intermittent night works in both directions
 - Barrier works and asphaltting
- Redcliffe Bridge casting yard in Ascot
 - Intermittent 3am starts
 - Concrete pours for bridge works
- Dunstone Road
 - Bridge and roadworks
- Broun Avenue, between Embleton Avenue and Beechboro Road North
 - Intermittent night works on Broun Avenue
 - Concrete pours for bridge works
 - Roadworks
- Tonkin Highway, between Hepburn Avenue and Collier Road
 - Intermittent night works in both directions
 - Highway widening, pavement, slipform traffic barrier install and road works
- Morley Drive
 - Intermittent night works and ramp closures
 - Concrete pours for Morley rail bridges
- Tonkin Highway (north of Railway Parade)
 - 5am concrete pours at southern dive structure
- Railway Parade and Guildford Road, near Tonkin Highway
 - Intermittent night works
 - Bridge works and early morning concrete pours



Early concrete pour

What can I expect?

- Works and vehicle movements may be noticeable across all areas. Noise and vibration management measures are in place, including use of the quietest equipment reasonably available.
- High noise level equipment will be located away from residential areas, and noisiest activities scheduled to take place earlier in the night. Works will be in accordance with a noise management plan approved by your local government authority. If you have concerns about our works, please call 138 138 (24 hours).

For more information on Tonkin Gap

W: <https://www.mainroads.wa.gov.au/tonkin-gap/>

E: enquiries@mainroads.wa.gov.au

T: 138 138 (24 hours)

FB: <https://www.facebook.com/groups/tonkingap/>

For more information on the Morley-Ellenbrook Line

W: www.metronet.wa.gov.au

E: info@metronet.wa.gov.au

T: 08 9326 3666

FB: <https://www.facebook.com/groups/morley.ellenbrook>