

Tonkin Gap Project and Associated Works

Construction Update

This update contains important information about upcoming works near you. Works below are anticipated from January but are subject to change. Some works will need to be undertaken on Sundays. Please drive carefully and observe the road signage. There is potential for longer than usual travel times and we encourage road users to plan ahead. Up to date information will be available through the Main Roads website and our Tonkin Gap Facebook page.

We're back at work!

We hope you had a happy and safe holiday break. There's lots of work coming up as we near completion of the project in 2023. Unfortunately, this will mean dust, vibration and noise as well as traffic changes. We are sorry if this impacts you and everything will be done to minimise impacts. As always, we appreciate your patience as we complete these necessary works. If you have concerns, please call 138 138 (24 hours).

Tonkin Highway between Dunreath Drive and Great Eastern Highway

We successfully switched traffic onto the new Tonkin Highway northbound off-ramp to Great Eastern Highway in December. This means the right turn on to Great Eastern Highway eastbound will be closed until mid-2023. Please use Dunreath Drive and Fauntleroy Avenue or the two dedicated U-turns on Great Eastern Highway. The team will continue to build the PSP connection and complete bulk verge works in this area.

On 3, 4 and 5 January the team will be working at night from 9pm to 5am to water blast the existing line markings and complete traffic barrier works on Tonkin Highway between Great Eastern Highway and Dunstone Road. There will be some noise during this work. For details on traffic impacts visit the Main Roads website.

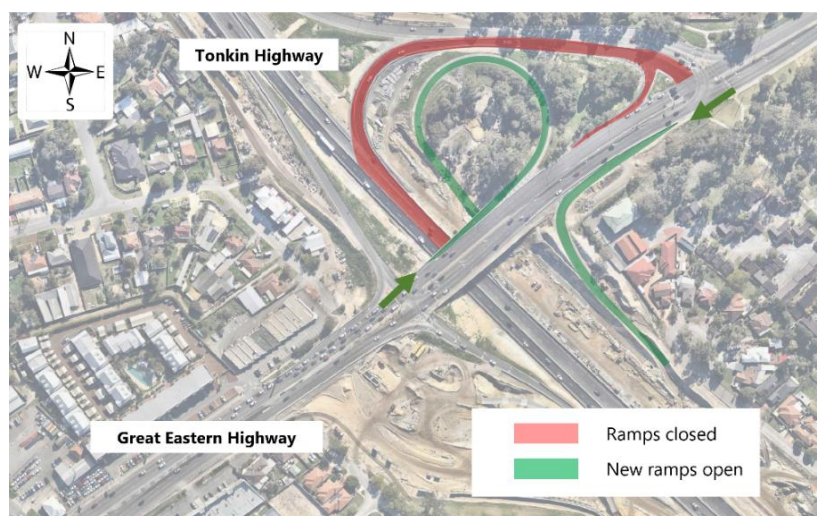
This is month you will see the team working on the Tonkin Highway northbound on-ramp from Great Eastern Highway and the Tonkin Highway southbound on-ramp from Great Eastern Highway. There will be ongoing earthworks in the area which may cause noise, vibrations and dust. Works will be during the day, at night and on weekends.

Victoria Street footbridge now open

The Victoria Street footbridge is now open, and the team will be carrying out finishing works to the bridge during January. We thank you for your patience.

Tonkin Highway southbound on-ramps from Great Eastern Highway reactivated

In January we are planning to switch traffic onto the new on-ramps to Tonkin Highway southbound from Great Eastern Highway (map 1). If you are travelling west, you will turn left to enter Tonkin Highway, and if you are traveling eastbound you will continue to turn left to enter Tonkin Highway. When the on-ramps are re-opened, we will close the temporary on-ramp that was built for traffic entering onto Tonkin Highway southbound from Great Eastern Highway.



Map 1

Great Eastern Highway works

Works along Great Eastern Highway will be ongoing until the end of the project as the team remove the existing pavements, kerb, footings, footpaths and traffic barriers, install new drainage and build the final road alignment. In January, there will be ongoing roadworks in this area, as we complete the remaining verge works along Great Eastern Highway westbound, between Tonkin Highway and the new intersection near Morrison Street.

Great Eastern Highway underpass update

Work on the Great Eastern Highway underpass is progressing well. Before we can open the underpass, we need to complete concrete stitch pours to help tie the panels together, complete the base slab, and tie in the PSP to the underpass. The underpass will need to remain closed until early 2023.

Tonkin Highway between Guildford Road and Redcliffe Bridge

Asphalting works continue along Tonkin Highway between Redcliffe Bridge and Guildford Road. Dust and vibrations may be noticeable during this work. In January, the team will be finishing asphalt works to switch northbound traffic on to the new Tonkin Highway southbound lanes in early February. This switch will need to happen at night as we will be modifying traffic barriers and the lane configuration.

Redcliffe Bridge

There will be ongoing earthworks in the area and vibrations may be noticeable during this work. Most of the works will happen during the day, however, there will be intermittent night works. The team continue to install the noise wall posts and panels on the bridge deck and we will start to remove the bridge cofferdams on either side of Redcliffe Bridge in January.



Redcliffe Bridge

Railway Parade and Guildford Road bridges

Intermittent lane closures at night will be required on Railway Parade and Guildford Road, while we complete rock pitching works and light pole installation.

From 16 to 24 January, we will be closing the Tonkin Highway southbound on ramp and off ramp to and from Guildford Road at night. This is so the team can complete final finishing works on the ramps. Stay up to date on the 'Roadworks' page on the Main Roads website and the Tonkin Gap Facebook page for details.

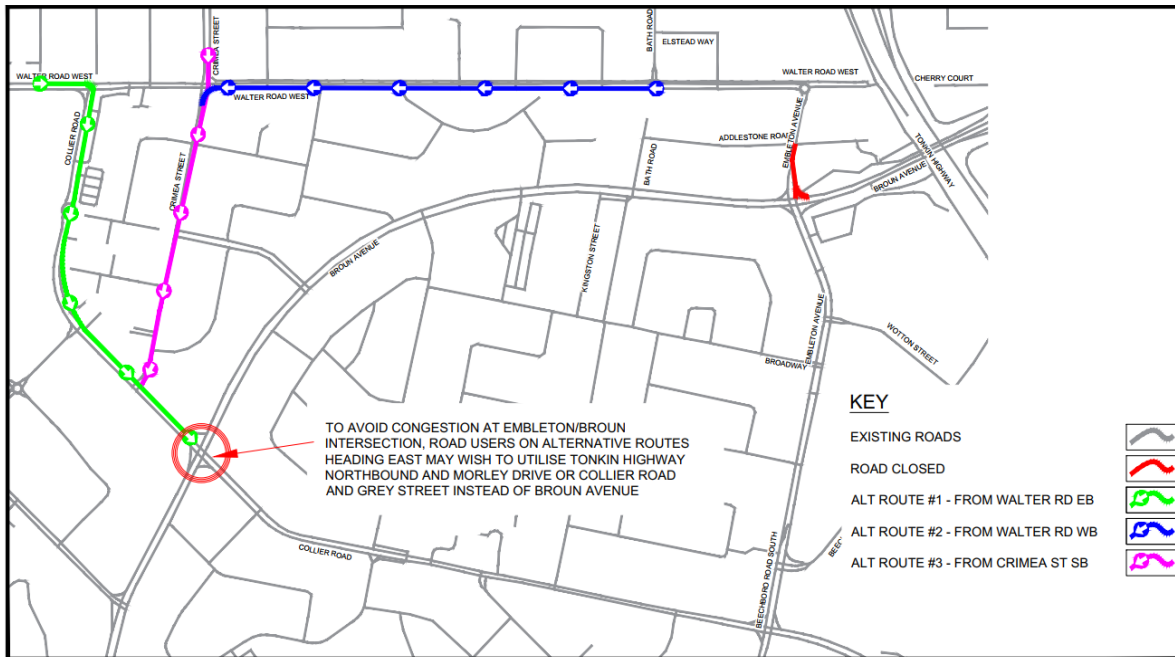
Broun Avenue

Works are progressing well at Broun Avenue as we complete works on the bridge barriers. Early morning concrete pours will continue to be required.

From 16 January the team will be working at night to install handrails on top of the retaining walls along Tonkin Highway southbound between Morley Drive and Broun Avenue. Lanes will be closed and there will be noise during these works, including the use of a hammer drill.

Broun Avenue and Embleton Avenue intersection works

From 9 January we will start to modify the intersection at Broun Avenue and Embleton Avenue as part of the works for the Morley-Ellenbrook Line. Pending approval, from 16 January there will be a 28-day closure of Embleton Avenue southbound between Addlestone Road and Broun Avenue (map 2). This is so the team can construct the new eastbound pavement onto Broun Avenue.



Extension of Tonkin Highway traffic management

Due to the additional works at Noranda Station and Morley Station that we are completing for the Morley- Ellenbrook Line, Tonkin Highway between Collier Road and Benara Road will remain as two lanes in each direction until July 2023. This continuous long-term temporary traffic management plan will prevent multiple traffic staging scenarios during the new works. Thank you for your patience.

Noranda works

Works continue for the future Noranda Station car park, as the team start bulk excavation works, build the crane pad, and install the storm trap footings. During this work there will be noise, dust and vibrations and people with swimming pools are encouraged to cover them where possible.

Sheet piling

In early-January we will begin sheet piling in the Tonkin Highway central median near Benara Road. Sheet piling involves drilling sheets of steel into the ground to provide support to the nearby works. During this work there will be noise and vibrations.

Benara Road underpass

From late-January we will be preparing to start works on the new pedestrian underpass at the eastern end of the Benara Road bridge as part of the station car park works. There will be lane closures on Benara Road during these works. For more details stay up to date on the Main Roads website and Tonkin Gap Facebook page.

Malaga footbridge

To improve access to the future station, and improve access to the western side of Whiteman Park, Main Roads is building a new footbridge across Tonkin Highway as part of the Tonkin Gap Project and Associated Works. We are in the early stages of design, and we will share more when it is developed further. We aim to start work on the bridge in mid-2023.

Dive structures

Northern dive structure

It's full steam ahead, as we start works on the embankments of the dive structure, install the security fencing and building the pavement towards the southern section. The team will also continue to complete the remaining concrete pours for the structure and build the pavement for the new Tonkin Highway southbound lanes.

Southern dive structure

The team will finish the remaining underground concrete works for the dive structure before starting to build the track slabs. A track slab is a reinforced concrete slab which supports the rail tracks for the train line.

Early starts during hotter days

When it's hot our crews may need to start works before 7am across the project. Particularly when we are working with concrete, steel, asphalt and paint due to the construction methodology. We appreciate your understanding during the summer months.

Out of hours works this month

In January our crews will be working out of hours (7pm until 7am) in our project area and along Tonkin Highway between Dunreath Drive and Hepburn Avenue. Dates are subject to change and specific details will be communicated on the Facebook page and Main Roads WA website.



Early morning concrete pour at the northern dive

- Tonkin Highway between Redcliffe Bridge and Dunreath Drive
 - Intermittent night works in both directions
 - Barrier works, lane closures, pavement works, traffic management traffic switch
- Tonkin Highway between Guildford Road and Redcliffe Bridge
 - Traffic management, traffic barrier installation, pavement removal
- Great Eastern Highway between Epsom Avenue and Coolgardie Avenue
 - Intermittent night works in both directions
 - Pavement works, traffic management
- Redcliffe Bridge
 - Intermittent early starts
 - Early morning concrete pours for traffic barrier installation
- Railway Parade and Guildford Road, near Tonkin Highway
 - Intermittent night works and traffic barrier removal
 - Finishing works on Railway Parade bridges
- Broun Avenue, between Embleton Avenue and Beechboro Road North
 - Traffic management, barrier relocation and early concrete pours for bridge approach barriers
 - Intermittent Sunday works
- Tonkin Highway between Hepburn Avenue and Collier Road
 - Intermittent night works
 - Tonkin Highway widening, bridge modifications, traffic barrier works and road works

What can I expect?

- Works and vehicle movements may be noticeable across all areas. Noise and vibration management measures are in place, including use of the quietest equipment reasonably available.
- High noise level equipment will be located away from residential areas, and noisiest activities scheduled to take place earlier in the night. Works will be in accordance with a noise management plan approved by your local government authority. If you have concerns about our works, please call 138 138 (24 hours).

For more information on Tonkin Gap

W: <https://www.mainroads.wa.gov.au/tonkin-gap/>

E: enquiries@mainroads.wa.gov.au

T: 138 138 (24 hours)

FB: <https://www.facebook.com/groups/tonkingap/>

For more information on the Morley-Ellenbrook Line

W: www.metronet.wa.gov.au

E: info@metronet.wa.gov.au

T: 08 9326 3666

FB: <https://www.facebook.com/groups/morley.ellenbrook>