



mainroads
WESTERN AUSTRALIA

*We're working for
Western Australia.*

Class 1 RAV Oversize Period Permit

Operating Conditions

Printed copies are uncontrolled unless marked otherwise.
Refer to Main Roads website for current version.

D16#399257
July 2023

Contents

REFERENCES AND RELATED DOCUMENTS.....	6
DEFINITIONS	6
1. APPLICATION	9
1.1 Approved Vehicles.....	9
1.2 Excluded Vehicles	9
1.3 Integration with a Low Loader Overmass Period Permit	9
1.4 Integration with a AMMS Period Permit.....	9
2 COMPLYING WITH LICENCING CONDITIONS	9
3 COMPULSORY HEAVY VEHICLE INCIDENT REPORTING.....	9
4 PERMIT STATUS.....	9
4.1 Permit Suspension & Revocation	9
4.2 Permit Amendments & Notifications	10
5 ACCESS CONDITIONS	10
5.1 Permitted Roads at Statutory Mass Limits.....	10
5.2 Permitted Routes at Concessional Mass Limits	10
5.3 Route Survey.....	11
5.4 Height Clearance Requirements.....	11
5.5 Width Clearance Requirements.....	11
5.6 Route Restrictions	12
5.7 Contraflow & Crossover Movements	12
5.8 Other Agency Approvals.....	12
6 DIMENSION REQUIREMENTS	13
6.1 Maximum Dimension Limits.....	13
6.2 Minimising Dimensions	13
6.3 Rear Overhang & Projection.....	13
7 SPEED & SAFE TRAVEL CONDITIONS	14
7.1 Speed Restrictions.....	14
7.2 Passing & Overtaking	15
7.3 Minimum Following Distance	15
7.4 Poor Visibility	15
8 WARNING DEVICES	15
8.1 Lights	15
8.2 Warning Signs and Flags.....	16
8.3 Delineators.....	16
8.4 Additional Warning Devices at Night	16
9 PILOT REQUIREMENTS	17
9.1 General Pilot Requirements.....	17
9.2 Pilot Vehicle Warning Lights and Signs	17
9.3 Managing Traffic.....	18

9.4	Position of Pilot Vehicles	18
9.5	Video Recording Requirements.....	19
9.6	Number of Pilot Vehicles	19
9.7	Additional Pilot Vehicle Requirements.....	19
9.8	Exceptions to the Pilot & Escort Vehicle Requirements - General	19
9.9	Exceptions to the Pilot & Escort Vehicle Requirements - Transportable Buildings	20
9.10	Exceptions to the Pilot & Escort Vehicle Requirements - Swimming Pools.....	20
9.11	Convoy Travel with Pilot Vehicles.....	20
10	LOADING	21
10.1	Carrying Multiple Items	21
10.2	Carrying of Large Indivisible Items in Multi-Modal Containers.....	21
11	APPROVED TRAVEL TIMES & CURFEWS	21
11.1	Night Travel Times & Curfews	21
11.2	Metropolitan Area Travel Times & Curfews	22
11.3	Christmas & New Year Curfews	23
11.4	Easter Curfews	23
11.5	Long Weekend Curfews	23
12	APPENDICES	24
	Appendix 1 – Narrow Bridges	25
	Appendix 2 – General Pilot Requirements.....	26
	Appendix 3 – Agricultural Pilot Requirements.....	27
	Appendix 4 – Central Zones	28
	Appendix 5 – Metropolitan Area Map.....	30
	Appendix 6 – Mandurah Curfew Map	31
	Appendix 7 – Fremantle Port Precinct	32
	Appendix 8 – Henderson Industrial Estate.....	33
	Appendix 9 – Roads Approved for 3 in Convoy	34
	Appendix 10 – Road Approved for 4 in Convoy.....	35

Document Control

Owner	Main Roads Heavy Vehicle Services
Custodian	Manager Heavy Vehicle Road Network Access
Document Number	D16#399257
Issue Date	June 2016
Review Frequency	As Required

Amendments

Revision Number	Revision Date	Description of Key Changes	Section / Page No.
1	01/04/2020	Updated document format, updated curfew exceptions, removed Mandurah Estuary Bridge pilot condition, added Chisolm Cres crossover condition, and added Audit Regime requirements.	All
2	06/05/2020	Increased length limit to 40m, added references to Overmass Period Permit and AMMS permit, clarified contraflow requirements, removed additional night pilot requirements for Fremantle Port Precinct, increased rear overhang limit, amended curfew limits.	s.1.1, 1.4, 4.7, 7.3, 8.4, 9.1, 9.2
3	4/06/2020	Clarified curfew limits	s.9.1 & 9.2
4	01/07/2020	Introduced requirement for a RAV undertaking a contraflow movement within the Metropolitan Area to contact the Main Roads Network Operations Centre.	s.4.7
5	7/08/2020	Included reference to drive under structures locations	s.4.4.1
6	09/09/2020	Updated Compulsory Heavy Vehicle Incident Reporting. Added sub-clause 4.5.4 Indian Ocean Drive route restriction.	s.3 & 4.5.4
7	1/09/2021	Move dimension requirements to Section 6. Excluded additional block truck from length measurement, clarified 300mm width requirement, exemption to TGS requirement for contraflow under a power line, clarified speed conditions, added passing and overtaking requirements, updated general pilot and escort requirements, added requirements for positioning pilot vehicles and managing traffic, updated GEH pilot requirements, clarified convoy requirements on GNH, updated curfew requirements to allow night movements.	s.1.1, 4.5, 4.7, 5.1, 5.2, 6, 7, 9.

Class 1 RAV Oversize Period Permit Operating Conditions

8	15/09/2021	Amended Freeway length restriction, clarified dimension requirements, clarified clearing built up traffic requirements.	s.5.1, 6, 7.2, 9.3, 13.1.
9	03/12/2021	Allowed convoys Munjina - Royhill Rd and part of Marble Bar Rd.	s.9.11
10	14/04/2022	Amended wording in sub-clause 5.7.4 to clarify when not considered a contraflow movement to avoid a roadside obstacle, added sub-clause 9.11.2(f) to allow 3 in convoy on Wodgina Access Road and Pippingarra Access Road, added clause 5.8, amended finishing time of the approved night hours under clause 11.1, for RAVs up to 5.5 metres wide and 40 metres long from 5:00 am to sunrise.	s.5.7, s.9.11, s.5.8, s.11.1
11	09/08/2022	Increased length limit for pilot concession for low loader with dolly. Clarified convoy route assessment requirements and added routes to 4 in convoy provisions.	cl.9.8 & 9.11
12	08/11/2022	Added reference to <i>Class 1 RAV 8 Tyre Per Axle Low Loader Overmass Period Permit</i> , removed references to platform trailers.	cl.1.3, 9.8
13	18/07/2023	Moved crossover conditions to cl. 5.6 and added a requirement to raise bollards. Clarified when ramps can be lowered. Changed reference to Kemerton Industrial Park to Wellesley. Added section of Marble Bar Rd, between GNH (Newman) and Munjina Roy Hill Rd to the approve roads for convoy travel.	cl. 5.7, 6.3, 11.1 Appendix 9 and 10

REFERENCES AND RELATED DOCUMENTS

The following documents relate to these Operating Conditions and are available on the Oversize Overmass (OSOM) page on the Main Roads website:

Document Number	Description
D15#453366	Oversize Vehicle & Pilot Vehicle General Requirements
D17#306203	Guidelines for Transporting Multiple Items on an Oversize or Over-mass Vehicle
D19#691324	Oversize Vehicle Route Survey - Audit Regime
D19#398498	Oversize Vehicle Pilot Video - Audit Regime
D18#287647	Contact Details for Other Agency Approvals
D17#69869	Policy – Movement of High Risk OSOM Vehicles

DEFINITIONS

The following are definitions for terms used in these Operating Conditions. Refer to the definitions in the *Road Traffic (Administration) Act 2008* and the *Road Traffic (Vehicles) Act 2012* and any subsidiary legislation to these Acts for the meanings of any terms not defined in this section. If a definition in the relevant Acts or the subsidiary legislation conflicts with a definition in this section, the definition in this section prevails for the purpose of these Operating Conditions.

Term	Definition
Central Zones	The area within and including the boundaries of the Perth and Fremantle Central Zones as depicted in Appendix 4 .
Concessional Mass Limits	Modified mass limits provided for under the <i>Class 1 RAV Low Loader Overmass Period Permit</i> or an <i>Accredited Mass Management Scheme (AMMS) Period Permit</i> .
Concessional Network	Tandem Drive Concessional Network 1.1, 2.2 or 2.3, available and maintained on the Accredited Mass Management Scheme (AMMS) page or the RAV Mapping Tool on the Main Roads website.
Contraflow Movement	A temporary arrangement on a road where the OSOM vehicle is transferred from its usual side to the other half of the carriageway where traffic is moving in the opposite direction.
Curfew	A period when the movement of an Oversize Vehicle is prohibited.
Day	The period from sunrise to sunset. Sunrise and sunset times can be obtained from the Perth Observatory website at www.perthobservatory.com.au/ or by contacting the Perth Observatory on 08 9293 8255, or from the Geoscience Australia website at http://www.ga.gov.au/geodesy/astro/sunrise.jsp
Fremantle Port Precinct	The area within and including the boundaries of the Fremantle Port Precinct as depicted in Appendix 7 .
Friday Long Weekend	A weekend extended to three days where the preceding Friday is the granted Public Holiday.
Gradeability	The steepness of grade that a motor vehicle is capable of climbing without stalling or losing traction.

Term	Definition
Ground Clearance	The vertical clearance between the lowest point of the load and the ground, including any lashings, straps, chains or other methods required to restrain the load.
Henderson Industrial Estate	The area within the boundaries of the Henderson Industrial Estate as depicted in Appendix 8 .
Large Indivisible Item	an item that: (a) cannot be divided without extreme effort, expense or risk of damage to it; and (b) cannot be carried on any vehicle without exceeding a mass or dimension requirement;
Licensing Authority	A Government Authority responsible for the administration of the vehicle licensing provision of the law of the relevant State, Territory or the Commonwealth.
Main Roads Website	www.mainroads.wa.gov.au – documents referenced within these operating conditions are published on the Oversize Overmass (OSOM) page.
Metropolitan Area	As depicted in Appendix 5 , means the area within: (a) the northern boundaries of the Local Government districts of Wanneroo, Swan and Mundaring; (b) the eastern boundaries of the Local Government districts of Wanneroo, Swan, Mundaring, Kalamunda, Armadale and Serpentine-Jarrahdale; (c) the southern boundaries of the Local Government districts of Serpentine-Jarrahdale and Rockingham; and (d) the Indian Ocean coastline.
Monday Long Weekend	A weekend extended to three days where the following Monday is the granted Public Holiday.
Night	The period from sunset to sunrise. Sunset and sunrise times can be obtained from the Perth Observatory website at www.perthobservatory.com.au/ or by contacting the Perth Observatory on 08 9293 8255, or from the Geoscience Australia website at http://www.ga.gov.au/geodesy/astro/sunrise.jsp
Operator	A representative of the company responsible for the operation of the RAV.
Oversize Agricultural Vehicle	A machine, implement and combination, whether driven, towed or carried, used for an agricultural application, including earthmoving machinery used by an earthmoving contractor specifically engaged in agricultural applications.
Peak Hours	7.30 am to 9.00 am and 4.30 pm to 6.00 pm on a Monday, Tuesday, Wednesday, Thursday or Friday, other than a public holiday;
Permit	A permit issued under Part 4 of the <i>Road Traffic (Vehicles) Act 2012</i> , which these Operating Conditions form part of.
Permit Holder	The Operator to whom the permit is issued.
Posted Speed Limit	The speed limit indicated by the numerals on the speed limit sign or 50 kilometres per hour in the absence of a speed limit sign in a built-up area.
RAV	An approved vehicle type to which the “ <i>Class 1 RAV Oversize Vehicle Period Permit</i> ” applies.

Term	Definition
Tandem Drive Network 2	The <i>Tandem Drive Network 2</i> approved roads are published in the form of Road Tables or are available on the RAV Mapping Tool on the Main Roads website.
Tandem Drive Network 5	The <i>Tandem Drive Network 5</i> approved roads are published in the form of Road Tables or are available on the RAV Mapping Tool on the Main Roads website.
Tandem Drive Network 9	The <i>Tandem Drive Network 9</i> approved roads are published in the form of Road Tables or are available on the RAV Mapping Tool on the Main Roads website.
Rear Overhang Line	The centre of a single axle, single axle group, tandem axle group, tri axle group or quad axle group nearest to the rear of the vehicle.
Rear Overhang	The distance between the rear overhang line and the rearmost part of the vehicle or the load.
Single Trip Permit	A permit that is issued to an oversize and/or overmass vehicle for a single movement on a specified route.
Statutory Dimension Limits	The dimension limits prescribed in Part 8 of the <i>Road Traffic (Vehicles) Regulations 2014</i> .
Statutory Mass Limits	The mass limits prescribed in Part 8 of the <i>Road Traffic (Vehicles) Regulations 2014</i> .
Traffic Guidance Scheme	A traffic guidance scheme is a documented plan for managing traffic in high-risk situations, such as contraflow movements. There are traffic guidance schemes for common movements approved by Main Roads, which are available on the Oversize Over-mass Permits page on the Main Roads website.

1. APPLICATION

1.1 Approved Vehicles

1.1.1 The *Class 1 RAV Oversize Period Permit* applies to:

- (a) a vehicle that is either carrying, or is designed to carry, a large indivisible item; or
- (b) a vehicle that has been built to exceed a dimension limit for the purpose of conducting driver training, including Heavy Vehicle Pilot training; or
- (c) a tow truck when towing a disabled single vehicle unit.

1.2 Excluded Vehicles

The *Class 1 RAV Oversize Period Permit* does not apply to a vehicle combination consisting of a platform trailer.

1.3 Integration with a Low Loader Overmass Period Permit

The *Class 1 RAV Oversize Period Permit* may be used in conjunction with a *Class 1 RAV Low Loader Overmass Period Permit*, a *Class 1 RAV 8 Tyre Per Axle Low Loader Overmass Period Permit*, a *Class 1 RAV Restricted Area Low Loader Overmass Period Permit*, or a *Class 1 Overmass Single Trip Permit*, provided the RAV complies with the *Guidelines for Transporting Multiple Items on an Oversize or Overmass Vehicle*.

1.4 Integration with a AMMS Period Permit

The *Class 1 RAV Oversize Period Permit* may be used in conjunction with an *Accredited Mass Management Scheme (AMMS) Period Permit* provided:

- (a) The RAV consists of a prime mover towing a tri axle semi-trailer only; and
- (b) Where the RAV is carrying more than one (1) large indivisible item, the items must be loaded in accordance with the *Guidelines for Transporting Multiple Items on an Oversize or Overmass Vehicle*, except clauses 3.1 and 3.2 of those Guidelines; and
- (c) Where other items are carried in addition to the large indivisible item(s), the additional items must be loaded in accordance with the *Guidelines for Transporting Multiple Items on an Oversize or Overmass Vehicle*.

2 COMPLYING WITH LICENCING CONDITIONS

Drivers and operators are reminded that in addition to these Operating Conditions, the RAV must be driven in accordance with any conditions of the vehicle's licence, as imposed by the relevant licensing authority.

3 COMPULSORY HEAVY VEHICLE INCIDENT REPORTING

All on-road incidents involving a RAV must be reported to Main Roads Heavy Vehicle Services by the operator. The Heavy Vehicle Incident Reporting form is available on the Incident Reporting page on the Main Roads website and it must be submitted within 48 hours of the incident occurring.

4 PERMIT STATUS

4.1 Permit Suspension & Revocation

4.1.1 Approval to operate a RAV may be suspended when road and/or traffic conditions are considered unsuitable. Main Roads personnel, WA Police or Traffic Escort Wardens, may make verbal notification of such suspension.

- 4.1.2** Approval to operate a RAV may be suspended or revoked if the operator or vehicle combination fails to comply with any of the requirements specified in the permit or these Operating Conditions.

4.2 Permit Amendments & Notifications

- 4.2.1** These Operating Conditions are subject to occasional amendments. If amendments are made that impact transport operators, they will be published as an “HVS Update” on the Main Roads website on the first working day of the month. Operators and drivers are required to ensure that they are operating vehicles on the public road network in accordance with the current and up to date Operating Conditions.
- 4.2.2** The RAV Networks are subject to periodic amendments, which include additional roads being included in the lists, roads being removed from the lists, or amendments being made to a condition relating to a particular road in the lists. RAV Networks updates will be effective from the Wednesday following the amendment and the RAV Networks are maintained on the Main Road website. Operators and drivers are required to ensure they are operating vehicles on the public road network in accordance with the current and up to date RAV Networks
- 4.2.3** Heavy Vehicle Travel Impacts are published when road conditions may impede the movement of Restricted Access Vehicles. Operators and drivers are required to check the Heavy Vehicle Travel Impacts on the Main Roads website immediately prior to operating the vehicle on the public road network to ensure that there is no relevant information that will impede their vehicle operating on the WA road network.
- 4.2.4** All conditions stipulated in HVS Updates or Heavy Vehicle Travel Impacts must be adhered to. Where a condition stipulates that contact must be made with a site supervisor or any other person prior to travel, this must be done via email or text message and evidence provided to Main Roads’ personnel upon request.

5 ACCESS CONDITIONS

5.1 Permitted Roads at Statutory Mass Limits

- 5.1.1** A RAV loaded within statutory mass limits may be driven on any public road within the State of Western Australia, except:
- (a) On a Freeway if it exceeds 2.5 metres in width and 25 metres in length; and
 - (b) Within a Central Zone if it exceeds 5.5 metres in width and 30 metres in length.
- 5.1.2** Despite sub-clause 5.1.1, a RAV may travel on the section of Kwinana Freeway south of Anketell Road, provided:
- (a) It is empty and within 2.7 metres in width and 26 metres in length; or
 - (b) It is empty and within 2.5 metres in width and 30 metres in length; or
 - (c) It is travelling at night in accordance with clause 11.1 – Night Travel Times & Curfews.

5.2 Permitted Routes at Concessional Mass Limits

- 5.2.1** When operating in conjunction with a *Class 1 RAV Low Loader Overmass Period Permit*, a RAV must not be driven over a bridge that is specified as a restricted bridge for the particular category of RAV in the *Class 1 RAV Overmass Category 1, 2, 3 – Restricted Bridges*, available on the Oversize Over-mass Permits page on the Main Roads website.

5.2.2 Subject to the exceptions under sub-clause 5.1.1, when operating in conjunction with an *Accredited Mass Management Scheme (AMMS) Period Permit*, a RAV must only be driven on a road specified in the relevant Concessional Network that applies to a prime mover towing a semi-trailer.

5.3 Route Survey

5.3.1 Prior to departure, the operator or driver of the RAV must assess the route of travel to ensure that it is suitable for use and that it can be driven along without contravening these Operating Conditions.

5.3.2 The Operator must maintain auditable records of the route survey in accordance with *Oversize Vehicle Route Survey - Audit Regime*, available on the Oversize Over-mass Permits page on the Main Roads website.

5.3.3 A RAV must not be driven along a route or within an area if doing so would be likely to cause:

- (a) Damage to property or another vehicle; or
- (b) Damage to telecommunication, electrical, gas, water or sewage services; or
- (c) Damage to a road (including a bridge), structure, roadside furniture, rail crossing or tree.

5.3.4 The operator must use the most appropriate route, which wherever possible must consist of State roads and Regional Distributor roads. Where a heavy vehicle bypass exists, this must be used, unless there is a physical constraint.

5.4 Height Clearance Requirements

5.4.1 A RAV must not travel under a structure unless there is a minimum of 300 millimetres clearance between the load and the structure.

Note: *To assist with conducting a route survey, drive under structure locations are published on the Oversize Overmass page and the RAV Mapping Tool on the Main Roads website.*

5.5 Width Clearance Requirements

5.5.1 A RAV must not exceed the available width between kerbs (WBK), unless the RAV has a minimum of 1.2 metres ground clearance to ensure the load will clear the bridge guardrails.

5.5.2 If a minimum 300 millimetre clearance between the RAV and any fixed obstacle, including roadside furniture, traffic signals, guardrails etc. is not available due to the width of the load, a spotter must be utilised to guide the driver of the RAV through the obstacle. The driver of a pilot vehicle may perform the function of a spotter, provided it does not affect their ability to perform their duties as the pilot.

Note 1: *There are a number of single lane (narrow) bridges on the road network, as listed in [Appendix 1](#) (this is not an extensive list).*

Note 2: *Traffic Guidance Scheme TGS RM0395-18-28 Facilitating Movement of Oversize Vehicle(s) Through Narrow Road Section is available on the Main Roads website to provide guidance when managing traffic at a narrow section of road, such as a bridge, guardrail or similar.*

5.6 Route Restrictions

Indian Ocean Drive must not be used as a through route. Indian Ocean Drive may be used to pick-up goods, deliver goods, or garage vehicles to properties located on Indian Ocean Drive, or on roads only accessible via Indian Ocean Drive, provided the RAV only travels on Indian Ocean Drive for the shortest distance necessary. Driver must carry documentation as proof of local delivery, pickup or garaging address.

5.7 Contraflow & Crossover Movements

- 5.7.1** Contraflow movements must only be conducted in accordance with an approved Traffic Guidance Scheme. If an approved Traffic Guidance Scheme is not available on the Oversize Overmass (OSOM) on the Main Roads website, the operator must submit a Traffic Guidance Scheme to Main Roads Heavy Vehicle Services for approval.
- 5.7.2** A RAV undertaking a contraflow movement within the Metropolitan Area must contact the Main Roads Network Operations Centre on 138 111 and advise them of the location, date and time of the contraflow movement.
- 5.7.3** A RAV undertaking a contraflow movement within the Perth Central Zone must contact:
- (a) the City of Perth by emailing obstruction.permit@cityofperth.wa.gov.au or phoning (08) 9461 3411 to obtain written approval prior to travel; and
 - (b) Main Roads Network Operations Centre on 138 111 and advise them of the location, date and time of the contraflow movement.
- 5.7.4** This clause does not apply to a RAV required to travel across the centreline of a road, then immediately return to the correct side of the road, to avoid an obstacle, such as a streetlight, parked vehicle, stay wire or power line.
- 5.7.5** A RAV using the crossover between Military Road and Roe Highway, Hazelmere, must undertake the movement in accordance with Traffic Guidance Schemes RM0395-18-08 and RM0395-18-12, available on the Oversize Overmass (OSOM) page on the Main Roads website.
- 5.7.6** A RAV using the crossover between Chisholm Crescent and Roe Highway, Kewdale, must undertake the movement in accordance with Traffic Guidance Schemes RM0395-18-23, available on the Oversize Overmass (OSOM) page on the Main Roads website.
- 5.7.7** When using a crossover, all bollards must be raised after the crossing is completed.

Note: *Bollard keys are obtained from Main Roads Heavy Vehicle Services.*

5.8 Other Agency Approvals

- 5.8.1** A RAV exceeding 4.3 metres in height must not be driven on a road without current written approval from all the relevant overhead cable operator(s).
- 5.8.2** Despite sub-clause 5.8.1, a RAV up to 4.6 metres in height may travel on any road listed in *Tandem Drive Network 2*, without approval from the relevant cable operator, except where a height restriction is specified as a road condition in *Tandem Drive Network 2*.
- 5.8.3** If a RAV is crossing the Ord River Diversion Dam on Victoria Highway, Kununurra, in excess of 3.5 metres in width, Water Corporation approval is required. Drivers must initially contact the Water Corporation Dam's Controller at least 1 hour prior to crossing.
- 5.8.4** An Aboriginal Affairs Planning Authority (AAPA) Lands Permit must be obtained prior to travelling on Great Central Rd. Permits can be obtained through the Department of Planning, Lands and Heritage website.

5.8.5 Written approvals must be carried in the RAV and produced upon request.

Note: “Contact Details for Other Agency Approvals” are available on the Oversize Overmass page on the Main Roads website.

6 DIMENSION REQUIREMENTS

A RAV is required to comply with statutory dimension limits unless a modified dimension limit is specified in this section.

6.1 Maximum Dimension Limits

6.1.1 A RAV must not exceed a dimension limit specified in the following table:

RAV Type	Maximum Length (m)	Maximum Width (m)	Maximum Height (m)
Rigid Vehicle	12.5	5.5	5.5
Rigid Vehicle towing a Pig Trailer	22.0*	5.5	5.5
Rigid Vehicle towing a Dog Trailer	25.0	5.5	5.5
Prime Mover towing a Semi-trailer	40.0	5.5	5.5
Prime Mover towing a Low Loader (with or without dolly)	40.0	5.5	5.5

* The overall length of vehicle and load may be up to 22 metres long, provided the overall length of vehicle when unladen does not exceed 20 metres.

6.1.2 A semi-trailer or low loader (with or without a dolly) being towed by a prime mover may exceed statutory trailer length limits, provided the RAV complies with the maximum length specified in sub-clause 6.1.1.

6.1.3 A RAV may exceed the statutory side projection limit, provided the RAV complies with the maximum width specified in sub-clause 6.1.1.

6.1.4 A RAV may exceed the statutory rear projection limit, provided the RAV complies with the maximum length limit specified in sub-clause 6.1.1 and the rear overhang limit specified in clause 6.3.

6.1.5 When connecting an additional block truck to the RAV under provisions of an overmass permit mentioned in clause 1.3, the length of the vehicle combination may exceed the maximum length specified in sub-clause 6.1.1 by the length of the block truck.

6.2 Minimising Dimensions

6.2.1 When travelling empty, a RAV must be reduced to the smallest possible dimension, with the exception of needing to disconnect vehicle components.

6.2.2 Where a load can be loaded safely in more than one way, it must be loaded in the way that minimises the width of the vehicle.

6.3 Rear Overhang & Projection

6.3.1 Unless otherwise specified on the permit, the rear overhang of a RAV consisting of a prime mover towing a semi-trailer or low loader trailer, in excess of 19 metres in overall vehicle combination length, must not exceed the lesser of:

- (a) 25% of the overall length of the RAV; or
- (b) 7.5 metres.

6.3.2 Despite sub-clause 6.3.1, a RAV not exceeding 2.5 metres in width and exceeding 30 metres in length, consisting of a semi-trailer fitted with an engineered headboard, may have a rear overhang up to 8.5 metres.

6.3.3 The ramps on a low loader must not be lowered in a manner that result in a dangerous rear projection. Ramps with pointed ends must be raised to at least 45 degrees. Ramps that fold may be lowered, provided they have rear lights and marker plates fitted to the ends.

Example of ramps causing a dangerous rear projection:



Example of ramps raised to 45 degrees:



Example of ramps folded:



7 SPEED & SAFE TRAVEL CONDITIONS

7.1 Speed Restrictions

7.1.1 A RAV exceeding 3.5 metres in width travelling during the day must not be driven at a speed that exceeds the lesser of:

- (a) 80 km/h; or
- (b) The posted speed limit.

7.1.2 A RAV exceeding 2.5 metres in width travelling at night must not be driven at a speed that exceeds the lesser of:

- (a) 80 km/h; or
- (b) The posted speed limit.

7.1.3 A RAV approaching a railway crossing must be driven at a speed at which the driver can, if necessary, stop safely before the crossing.

7.1.4 A RAV approaching any fixed obstacle, including roadside furniture, traffic signals, guardrails etc. must be driven at a speed at which the driver can safely negotiate the obstacle and if necessary, stop safely.

7.1.5 A RAV approaching another vehicle in the opposing direction must be driven at a speed at which the driver can, if necessary, move over or stop safely before passing.

7.2 Passing & Overtaking

- 7.2.1** The driver of a RAV or the lead pilot must monitor the UHF channel 40 for oncoming RAVs. Where it is identified that two RAVs will need to pass in opposing directions and the road width is not adequate, a RAV passing a suitable parking bay must stop in the parking bay until the approaching RAV passes. All involved parties must communicate with one another to determine who will stop in a parking bay, or if no parking bay is available, move off the road at a suitable location.
- 7.2.2** Where the road width is not sufficient to allow an oncoming vehicle to pass the RAV and for both vehicles to remain on the sealed section of road, the RAV driver must determine which vehicle is a higher risk. Higher risk includes factors, such as heavier axle loadings and higher centre of gravity. The higher risk vehicle must remain on the sealed section of road, where practicable.
- 7.2.3** To avoid unreasonable traffic build up and allow vehicles to pass safely, a RAV in excess of 4.5 metres in width must stop in all suitable parking bays to allow built up traffic to pass.

Note: *Unreasonable traffic build up can include multiple vehicles, as well as a single vehicle that has been held-up behind the RAV for more than 10 minutes, due to a lack of overtaking opportunities. Nothing in this clause prevents a RAV from stopping or slowing down in other suitable and safe areas to allow vehicles to pass safely.*

7.3 Minimum Following Distance

The driver of a RAV must maintain a distance of at least 200 metres from any other heavy vehicle travelling in front of it, unless:

- (a) The RAVs are travelling in convoy in accordance with these operating conditions; or
- (b) The RAV is overtaking the vehicle in front or the vehicle in front is stopping; or
- (c) There is a separate lane available for the use of overtaking traffic; or
- (d) The RAV is in an urban area and it is not reasonably practicable to maintain such a distance; or
- (e) The RAV is stopped, or coming to a stop for the purpose of complying with a provision of any law or avoiding conflict with other traffic.

7.4 Poor Visibility

- 7.4.1** The driver of a RAV must not begin to travel if, due to circumstances such as fog, heavy rain, smoke, dust or insect plague:
- (a) The visibility is less than 250 metres during the day; or
 - (b) The headlights of a vehicle approaching within 250 metres could not be seen at night.
- 7.4.2** Where a RAV is already travelling when visibility is reduced to the level described above, the driver must drive into the nearest safe parking area, and wait until visibility improves beyond that level before continuing to travel.

8 WARNING DEVICES

8.1 Lights

- 8.1.1** A RAV must operate with headlights switched on at all times.

- 8.1.2** A RAV in excess of 3.0 metres in width or 25 metres in length must display at least one amber flashing warning light, which must be visible in all directions, or must be supplemented by additional warning lights so at least one warning light is visible in all directions.
- 8.1.3** A warning light must comply with the requirements in the *Oversize Vehicle & Pilot Vehicle General Requirements*.
- 8.1.4** A RAV must not display an amber flashing warning light if not required under this clause.

8.2 Warning Signs and Flags

- 8.2.1** A RAV exceeding 2.5 metres in width or 25 metres in length must clearly display:
- (a) “Oversize” warning sign on the front of the vehicle; and
 - (b) “Oversize” warning sign on the rear of the vehicle, or if carrying a rear projecting load, the “Oversize” warning sign is to be mounted as close to the rear of the load as practical; and
 - (c) Four (4) warning flags. One flag must be positioned at each side of both the front and rear of the vehicle, or if there is any projecting load, at each side of both the front and rear of the projecting load.
- 8.2.2** A RAV with a length exceeding 22 metres, up to 25 metres, and with a width not exceeding 2.5 metres, must only display an “Oversize” warning sign on the rear of the vehicle, or if carrying a rear projecting load, as close to the rear of the load as practical.
- 8.2.3** An “Oversize” warning sign and a warning flag must comply with the requirements in the *Oversize Vehicle & Pilot Vehicle General Requirements*.
- 8.2.4** A RAV must not display an “Oversize” warning sign if not required under this clause.

8.3 Delineators

- 8.3.1** If any part of a side projection on a RAV projects more than 150 millimetres and is less than 500 millimetres thick from top to bottom, the vehicle must display:
- (a) A warning light in accordance with clause 8.1; and
 - (b) Delineation directly on or in line with both the front and rear of the side projection.
- 8.3.2** Delineation must be in accordance with the allowable methods set out in the *Oversize Vehicle & Pilot Vehicle General Requirements*.

8.4 Additional Warning Devices at Night

- 8.4.1** If travelling at night, a RAV in excess of 2.5 metres in width or 25 metres in length must display at least one amber flashing warning light, which must be visible in all directions, or must be supplemented by additional warning lights so at least one warning light is visible in all directions.
- 8.4.2** A warning light must comply with the requirements outlined in the *Oversize Vehicle & Pilot Vehicle General Requirements*.
- 8.4.3** A RAV travelling at night must also display:
- (a) Lights showing yellow to the front and red to the rear (known as “side markers”), no more than 2 metres apart along both sides of the vehicle or load; and
 - (b) If in excess of 2.5 metres in width, yellow or white lights (known as “front clearance lights”) on the front of the trailer deck, one on each side of the trailer, as near as practical to the front outer edge and clearly visible to oncoming traffic; and

- (c) If carrying a load that is not contained within the confines of the vehicle, flood lights attached to the load or the trailer, directed upward at the extremities of the load in a manner so as not to dazzle any driver; and
- (d) An amber flashing warning light mounted on the extremity of a load projecting more than 1.2 metres from the rear of the vehicle.

9 PILOT REQUIREMENTS

9.1 General Pilot Requirements

- 9.1.1 The pilot vehicle must comply with the requirements stipulated in the *Oversize Vehicle & Pilot Vehicle General Requirements*.
- 9.1.2 The driver of a pilot vehicle must hold a Heavy Vehicle Pilot License, unless authorised under the *Heavy Vehicle Agricultural Pilot Authorisation*, available on the Main Roads website.
- 9.1.3 For the purpose of this clause, the driver of a pilot vehicle operating in accordance with the *Heavy Vehicle Agricultural Pilot Authorisation* is known as an “Agricultural Pilot”.
- 9.1.4 Where a Licensed Heavy Vehicle Pilot is specified in [Appendix 3](#), it may be substituted for an Agricultural Pilot, provided there is a holder of a Heavy Vehicle Pilot License in the lead Agricultural Machine, overseeing the pilots.
- 9.1.5 The driver of a RAV must comply with any lawful direction or signal given by the lead pilot.
- 9.1.6 The driver of a RAV must produce any applicable permit and Traffic Guidance Scheme to a pilot accompanying the RAV upon request.
- 9.1.7 Prior to accompanying a RAV, pilots must inform themselves of the RAV dimensions, approved route, operating conditions and any applicable Traffic Guidance Scheme. A pilot must not accompany a RAV that exceeds the allowable dimensions or does not comply with the operating conditions.
- 9.1.8 The headlights or day running lights on a pilot vehicle or escort vehicle must be switched on when accompanying a RAV.
- 9.1.9 A pilot vehicle or escort vehicle must not tow a trailer or carry a load, but it may carry tools, equipment or substances for use in connection with the RAV it is accompanying.
- 9.1.10 The pilot or Traffic Escort Warden must not operate any other vehicle or machinery, such as steer a jinker trailer, whilst accompanying a RAV.

Note: *If a RAV is required to be accompanied by a pilot vehicle, the driver of the pilot vehicle must ensure that they comply with each provision of the permit that applies to the pilot vehicle.*

9.2 Pilot Vehicle Warning Lights and Signs

- 9.2.1 When accompanying a RAV, pilot vehicles must have amber flashing warning lights operating in accordance with the *Oversize Vehicle & Pilot Vehicle General Requirements*.
- 9.2.2 When accompanying a RAV exceeding 4.5 metres in width, the lead pilot vehicle must have two “alternating flashing white lights”, known as *Wig Wag Lights*, on the front of the pilot vehicle in accordance with the *Oversize Vehicle & Pilot Vehicle General Requirements*.

9.2.3 When accompanying a RAV, pilot vehicles must have “Oversize Load Ahead” warning signs displayed in accordance with the *Oversize Vehicle & Pilot Vehicle General Requirements*.

9.2.4 Pilot vehicles must not have warning lights operating or signs displayed when not accompanying a RAV.

9.3 Managing Traffic

9.3.1 The lead pilot must use UHF Channel 40 at regular intervals to warn oncoming traffic of the approaching RAV.

9.3.2 In accordance with clause 7.2, the lead pilot must monitor the UHF channel 40 for oncoming RAVs or oncoming higher risk vehicles and must facilitate the RAV or the other vehicles pulling into parking bays, or other appropriate areas, to enable the oncoming vehicles to pass safely.

9.3.3 To ensure the oncoming traffic can pass the RAV safely, the lead pilot must give clear lawful directions to oncoming traffic to move off the road. If a vehicle is not a sufficient distance off the road to allow clear passage of the RAV, the pilot must advise the driver of the RAV and the RAV must stop until the passage is clear.

9.3.4 In accordance with clause 7.2, a rear pilot must monitor the traffic build up at the rear of the RAV and advise the lead pilot when there is unreasonable traffic build up. The pilot(s) must facilitate the RAV pulling into parking bays or stopping in other safe locations as required to enable vehicles to pass.

Note: *Unreasonable traffic build up can include multiple vehicles, as well as a single vehicle that has been held-up behind the RAV for more than 10 minutes, due to a lack of overtaking opportunities. Nothing in this clause prevents a RAV from stopping or slowing down in other suitable and safe areas to allow vehicles to pass safely.*

9.4 Position of Pilot Vehicles

9.4.1 When one (1) pilot vehicle accompanies a RAV, the pilot vehicle must travel:

- (a) Behind the RAV when travelling on a road with multiple lanes in the direction of travel (other than overtaking lanes); or
- (b) In front of the RAV when travelling on a road with a single lane in the direction of travel.

9.4.2 When two (2) pilot vehicles accompany a RAV, the pilot vehicles must travel:

- (a) One (1) in front of the RAV and one (1) behind the RAV; or
- (b) Where necessary to manage traffic behind the RAV, both may travel behind the RAV when travelling on a road with multiple lanes in the direction of travel (other than overtaking lanes), provided the RAV does not encroach into oncoming traffic.

9.4.3 Sub-clauses 9.4.1 and 9.4.2 do not apply when it is necessary for the pilot vehicles to be positioned in a different manner for the purpose of managing traffic at intersections, bridge crossings or in accordance with a Traffic Guidance Scheme.

9.4.4 A pilot vehicle must travel far enough ahead of the RAV it is accompanying to give adequate warning to other road users of the presence of the RAV, taking into account the type of vehicles that use the road, traffic speed, road geometry, availability of safe pullover areas, weather, visibility and other driving conditions.

9.4.5 A pilot vehicle must not travel on or over continuous dividing lines on a carriageway, unless positioning the vehicle in a safe manner to control an intersection or close a road / bridge.

9.4.6 When crossing continuous dividing lines on a carriageway to control an intersection or close a road / bridge, the pilot must ensure there is sufficient sight distance available for approaching traffic to see the pilot and stop safely.

9.5 Video Recording Requirements

9.5.1 A Licensed Heavy Vehicle Pilot's vehicle, accompanying a RAV in excess of 4.5 metres in width, must be fitted with a forward facing video recording device that records the movement in accordance with the *Oversize Vehicle Pilot Video – Audit Regime*.

9.5.2 The Licensed Heavy Vehicle Pilot and the operator of the RAV must comply with the requirements stipulated in the *Oversize Vehicle Pilot Video – Audit Regime*.

9.6 Number of Pilot Vehicles

9.6.1 A RAV must be accompanied by the minimum number of pilot vehicles specified in *Appendix 2*, except where:

- (a) Clause 9.7 – Additional Pilot Vehicle Requirements applies; or
- (b) Clauses 9.8 to 9.10 – Exceptions to Pilot & Escort Vehicle Requirements apply; or
- (c) Additional pilot requirements are specified under clause 9.11 for convoy travel.

9.6.2 A RAV that is an oversize agricultural vehicle may be accompanied by the minimum number of pilot vehicles specified in *Appendix 3*.

9.7 Additional Pilot Vehicle Requirements

9.7.1 The number of pilot vehicles specified in clauses 9.6 to 9.11 are the minimum number of pilot vehicles required. If an operator considers it necessary to use additional pilot vehicles to facilitate the safe movement of the RAV, additional pilot vehicles may be used.

9.7.2 Where a RAV is operating in accordance with a Main Roads approved Traffic Guidance Scheme, the additional number of pilots identified in the approved plan must be used.

9.7.3 A RAV consisting of an over-length or extendable semi-trailer and carrying a low profile load with a height less than 500 millimetres, must be accompanied by a minimum of two (2) pilot vehicles if:

- (a) The trailer exceeds 9.5 metres in length, measured from the point of articulation (king pin) to the centre of the rear axle group; and
- (b) The overall combination length exceeds 25 metres.

9.7.4 A RAV conducting central movement over bridges in accordance with an overmass permit bridge crossing requirement on Great Eastern Highway, between Roe Highway (Midvale) and Yilgarn Ave (Northam), must be accompanied by a minimum of three (3) pilot vehicles, in addition to any Traffic Escort Warden requirement, if applicable.

9.7.5 A RAV exiting Campersic Road onto Toodyay Road must have one (1) additional pilot to manage southbound traffic on Toodyay Road.

9.8 Exceptions to the Pilot & Escort Vehicle Requirements - General

9.8.1 Except where clause 9.7 applies, a RAV exceeding 25 metres in length, but not exceeding 26 metres in length, may travel on a road specified in *Tandem Drive Network 5* without a pilot vehicle, provided the RAV is not in excess of 2.5 metres in width.

9.8.2 Except where clause 9.7 applies, a RAV exceeding 25 metres in length, but not exceeding 30 metres in length, may travel on a road specified in the *Tandem Drive Network 9* without a pilot vehicle, provided the RAV is not in excess of 2.7 metres in width.

- 9.8.3** Except where clause 9.7 applies, a RAV consisting of a prime mover and low loader trailer, without a dolly, does not require a pilot vehicle if the overall length does not exceed 26 metres and the width does not exceed 3.5 metres.
- 9.8.4** Except where clause 9.7 applies, a RAV consisting of a prime mover and low loader trailer, with a dolly, does not require a pilot vehicle if the overall length does not exceed 30 metres and the width does not exceed 3.5 metres.
- 9.8.5** Except where clause 9.7 applies, a RAV does not have any additional pilot or escort requirements if an additional block truck is connected to the RAV and the overall length of the RAV does not exceed 40 metres when excluding the length of the additional block truck.

9.9 Exceptions to the Pilot & Escort Vehicle Requirements - Transportable Buildings

- 9.9.1** For a prefabricated transportable building, only one pilot vehicle is required where:
- (a) The maximum width at the base of the building is 4.5 metres, plus 100 millimetres tolerance for external fittings, and
 - (b) The maximum width at the eaves is 5 metres.
- 9.9.2** This pilot exception does not apply for the transport of a prefabricated transportable building within the Central Zones.

9.10 Exceptions to the Pilot & Escort Vehicle Requirements - Swimming Pools

- 9.10.1** For a single swimming pool, only one pilot vehicle is required where:
- (a) The maximum width at the base of the swimming pool is 4.5 metres, and
 - (b) The maximum width at the flange is 4.9 metres; and
 - (c) The flange of the swimming pool is the top of the load.
- 9.10.2** This pilot exception does not apply to packaged export swimming pools.
- 9.10.3** This pilot exception does not apply to the transport of a swimming pool within a Central Zone.

9.11 Convoy Travel with Pilot Vehicles

- 9.11.1** RAVs may travel in convoy if stipulated under this clause, provided:
- (a) The transport operator has a documented contingency plan to manage the RAVs in the event of a mechanical failure; and
 - (b) The transport operator has a documented plan for fatigue breaks and other required stops to ensure the parking areas are suitable to safely accommodate all RAVs the convoy.
- 9.11.2** A maximum of two (2) RAVs may travel in convoy with one another when accompanied by the appropriate number of pilots, unless otherwise specified in this clause.
- 9.11.3** Three (3) RAVs may travel in convoy while travelling on a road listed in [Appendix 9](#).
- 9.11.4** Four (4) RAVs may travel in convoy while travelling on a road listed in [Appendix 10](#), provided an additional pilot vehicle accompanies the convoy.
- 9.11.5** A RAV must not travel in convoy when required to be accompanied by a pilot vehicle when travelling within a Central Zone.

- 9.11.6 RAVs must not travel in convoy on Horrie Miller Drive, north of Paltridge Road in Perth Airport.
- 9.11.7 The length of a convoy travelling outside of the Metropolitan Area must not exceed a static length of 200 metres, excluding the pilot vehicles.
- 9.11.8 Each RAV in the convoy must obtain a separate permit.
- 9.11.9 When RAVs are travelling in convoy, the pilot vehicle requirements and any other conditions that are applicable to the largest combination, apply to the convoy.
- 9.11.10 The distance between RAVs travelling in convoy must not exceed 100 metres.

10 LOADING

10.1 Carrying Multiple Items

- 10.1.1 A RAV must only carry multiple items in accordance with the *Guidelines for Transporting Multiple Items on an Oversize or Overmass Vehicle*.

10.2 Carrying of Large Indivisible Items in Multi-Modal Containers

A RAV may carry one or more large indivisible items in a multi-modal container provided:

- (a) The multi-modal container does not exceed 2.5 metres in width or 12.2 metres in length; and
- (b) The height measured to the top of the multi-modal container does not exceed 4.6 metres; and
- (c) The height measured to the top of any large indivisible items in a multi-modal container does not exceed the relevant overall height limit specified at clause 6.1; and
- (d) The multi-modal container does not contain any goods that are not large indivisible items.

11 APPROVED TRAVEL TIMES & CURFEWS

11.1 Night Travel Times & Curfews

A RAV must not travel at night except where it is of a type described and travelling on the roads specified in the following table.

RAV Type	Overall Length	Overall Width	Permitted Roads
Any RAV	≤22 metres	≤2.7 metres	Any road, subject to clause 5.1.
A RAV, other than a rigid vehicle towing a dog trailer	≤23 metres	≤2.7 metres	Roads outside the Metropolitan Area listed in <i>Tandem Drive Network 2</i> .
A RAV that is a rigid vehicle towing a dog trailer	≤25 metres	≤2.7 metres	Roads outside the Metropolitan Area listed in <i>Tandem Drive Network 2</i> .
Any RAV	≤26 metres	≤2.7 metres	Roads outside the Metropolitan Area listed in <i>Tandem Drive Network 5</i> .

Any RAV	≤30 metres	≤2.7 metres	Roads outside the Metropolitan Area listed in <i>Tandem Drive Network 9</i> .
	≤40 metres	≤5.5 metres	Roads within the Fremantle Port Precinct.
	≤40 metres	≤5.5 metres	Roads within the Henderson Industrial Estate.
	≤26 metres	≤3.5 metres	The Freeways, between 9:30pm and 5:00am only.
Any RAV	≤40 metres	≤5.5 metres	<ol style="list-style-type: none"> 1) All Roads within the Metropolitan Area, excluding the Freeways, between 9:30pm and sunrise only. 2) The sections of Tonkin Highway and Great Northern Highway from the Metropolitan Area boundary to the Muchea RTAA, between 9:30pm and sunrise only. 3) Kwinana Freeway south of Anketell Road and Forrest Highway, between 9:30pm and sunrise, provided the RAV is not travelling within the Metropolitan Area after 5:00am. The RAV may only travel off Forrest Highway prior to sunrise to access Wellesley, Bunbury Port or the Willinge Drive Road Train Assembly Area.

11.2 Metropolitan Area Travel Times & Curfews

11.2.1 A RAV must not travel in the Metropolitan Area during peak hours except where it is of a type described and travelling on the roads specified in the following table.

RAV Type	Overall Length	Overall Width	Permitted Roads
Any RAV	≤22 metres	≤2.7 metres	Any road, except on a Freeway.
A RAV, other than a rigid vehicle towing a dog trailer	≤23 metres	≤2.7 metres	Roads listed in <i>Tandem Drive Network 2</i> , except on a Freeway.
A RAV that is a rigid vehicle towing a dog trailer	≤25 metres	≤2.7 metres	Roads listed in <i>Tandem Drive Network 2</i> , except on a Freeway.
All types of RAVs	≤26 metres	≤2.7 metres	Roads listed in <i>Tandem Drive Network 5</i> , except on a Freeway.
	≤40 metres	≤3.1 metres	Roads within the Fremantle Port Precinct.
	≤40 metres	≤5.5 metres	Roads within the Henderson Industrial Estate.

All types of RAVs	≤40 metres	≤5.5 metres	Unless otherwise specified in this table, only approved roads within Metropolitan Area during curfew, as depicted in Appendix 5 .
-------------------	------------	-------------	---

11.2.2 A RAV travelling during peak hours must not exceed the statutory rear overhang limit, as prescribed in the *Road Traffic (Vehicles) Regulations 2014*.

11.2.3 For the purpose of this clause, if a RAV consists of two (2) towing vehicles (blocks trucks), the second towing vehicle (block truck) is excluded from the length measurement.

11.3 Christmas & New Year Curfews

11.3.1 A RAV exceeding 2.7 metres in width and/or 30 metres in length must not travel on Forrest Highway and Lakelands Lake Clifton Road (includes Mandurah and Dawesville Bypasses), between the intersections of Pinjarra Road and Peppermint Grove Road, during the period from sunset on 18th December until sunrise on 4th January. Refer to [Appendix 6](#) – *Mandurah Curfew Map*.

11.3.2 A RAV exceeding 4.5 metres in width and/or 30 metres in length must not travel on any of the following roads during the periods from sunset on 23rd December until sunrise on 27th December and from sunset on 30th December until sunrise on 4th January:

- (a) Albany Highway (Bedforddale Road Train Assembly Area, to Albany)
- (b) Brand Highway
- (c) Eyre Highway
- (d) Great Eastern Highway
- (e) South Western Highway (Armadale to Bunbury)
- (f) Great Northern Highway (Roe Highway to Mt Magnet)

11.4 Easter Curfews

11.4.1 A RAV exceeding 2.7 metres in width and/or 30 metres in length must not travel on Forrest Highway and Lakelands Lake Clifton Road (includes Mandurah and Dawesville Bypasses), between the intersections of Pinjarra Road and Peppermint Grove Road, during the period from sunset on the Wednesday before Good Friday until sunrise on the Tuesday after Easter Monday. Refer to [Appendix 6](#) – *Mandurah Curfew Map*.

11.4.2 A RAV exceeding 4.5 metres in width and/or 30 metres in length must not travel on any road in Western Australia during the period from sunset on the Wednesday before Good Friday until sunrise on the Tuesday after Easter Monday.

11.5 Long Weekend Curfews

11.5.1 A RAV exceeding 2.7 metres in width and/or 30 metres in length must not travel on Forrest Highway and Lakelands Lake Clifton Road (includes Mandurah and Dawesville Bypasses), between the intersections of Pinjarra Road and Peppermint Grove Road, (refer to [Appendix 6](#) – *Mandurah Curfew Map*), during the following periods:

- (a) Sunset on the Thursday prior to a Monday long weekend until sunrise on the Tuesday after a Monday long weekend; and
- (b) Sunset on the Wednesday prior to a Friday long weekend until sunrise on the Monday after a Friday long weekend.

12 APPENDICES

Appendix	Title
Appendix 1	Narrow Bridges
Appendix 2	General Pilot Requirements
Appendix 3	Agricultural Pilot Requirements
Appendix 4	Central Zones
Appendix 5	Metropolitan Area Map
Appendix 6	Mandurah Curfew Map
Appendix 7	Fremantle Port Precinct
Appendix 8	Henderson Industrial Estate
Appendix 9	Roads Approved for 3 in Convoy
Appendix 10	Roads Approved for 4 in Convoy

Appendix 1 – Narrow Bridges

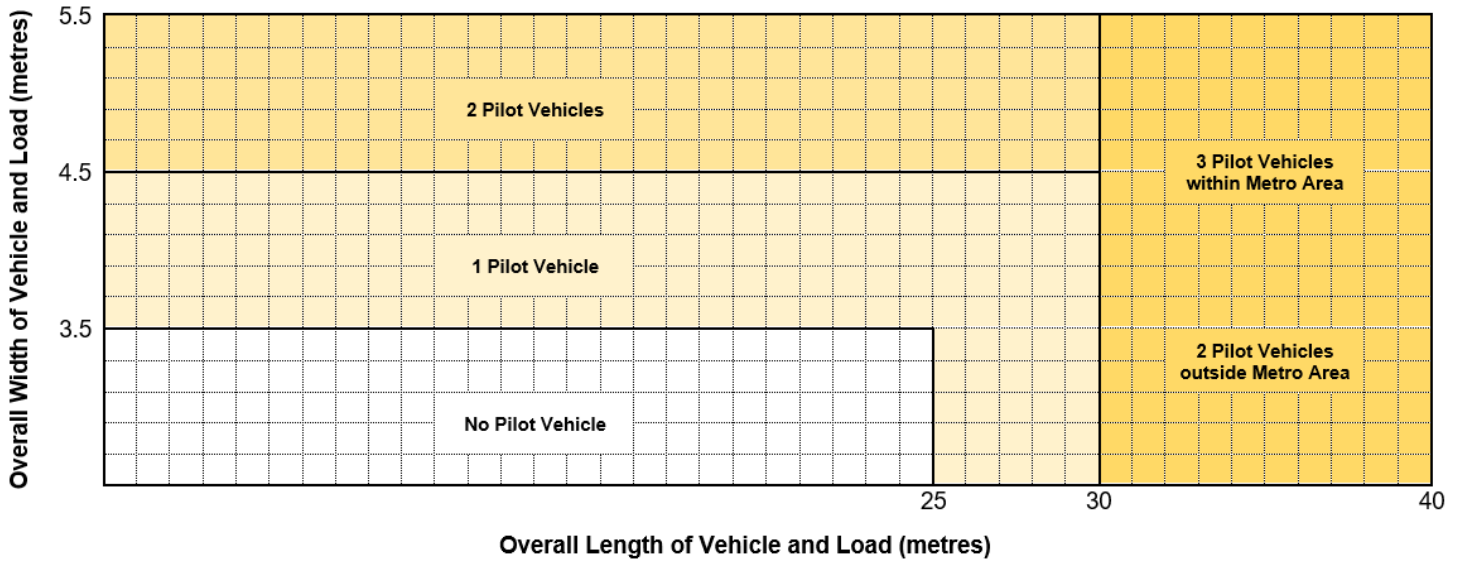
NARROW BRIDGES ON HIGHWAYS AND MAIN ROADS

BRIDGE NUMBER	ROAD NAME	SLK (km)	CROSSING NAME	WBK ¹
814	GREAT NORTHERN HWY	2291.57	FITZROY RIVER-WILLARE CROSSING	4.2
816	GREAT NORTHERN HWY	2992.45	MISTAKE CREEK	4.2
817	GREAT NORTHERN HWY	3009.59	BOW RIVER	4.2
879	GREAT NORTHERN HWY	2284.94	MINNIE RIVER	4.2
1260	GREAT NORTHERN HWY	2946.65	FROG HOLLOW CREEK	4.2
1261	GREAT NORTHERN HWY	2973.54	ROCKY CREEK	4.2
1262	GREAT NORTHERN HWY	2974.37	MABEL SPRING CREEK	4.2
1263	GREAT NORTHERN HWY	2960.82	BIG MABEL DOWNS	4.2
1267	GREAT NORTHERN HWY	2931.41	TICKALARA CREEK	4.2
1268	GREAT NORTHERN HWY	2527.80	TWO MILE CREEK	4.2
1269	GREAT NORTHERN HWY	2532.94	BLUE BUSH CREEK	4.2
1305	GREAT NORTHERN HWY	3111.42	ARTHUR CREEK	4.2
1310	GREAT NORTHERN HWY	2523.73	BROOKING CHANNEL	4.2
1311	GREAT NORTHERN HWY	2524.76	FITZROY RIVER	4.2
1231	GIBB RIVER RD	119.39	LENNARD RIVER	4.2
1101	NANUTARRA – MUNJINA RD	175.41	BEASLEY RIVER	4.3
1102	NANUTARRA – MUNJINA RD	62.29	DUCK CREEK	4.3
1103	NANUTARRA – MUNJINA RD	98.86	METAWANDY CREEK	4.3
1125	NANUTARRA – MUNJINA RD	59.28	HOUSE CREEK	4.3
812	MARBLE BAR RD	92.14	FORTESCUE RIVER - ROY HILL	3.6
3483	BOYANUP – CAPEL RD	4.90	WAWA DRAIN C	5.5
1479	ANKETELL RD	6.26	KWINANA FWY & RAIL	5.0
1595	KAREL AVE	0.58	WOODBIDGE FREIGHT RAIL LINE	5.42
1482	KAREL AVE	0.85	ROE HWY	5.00
9282	KAREL AVE	1.03	ROE HWY PSP	4.83

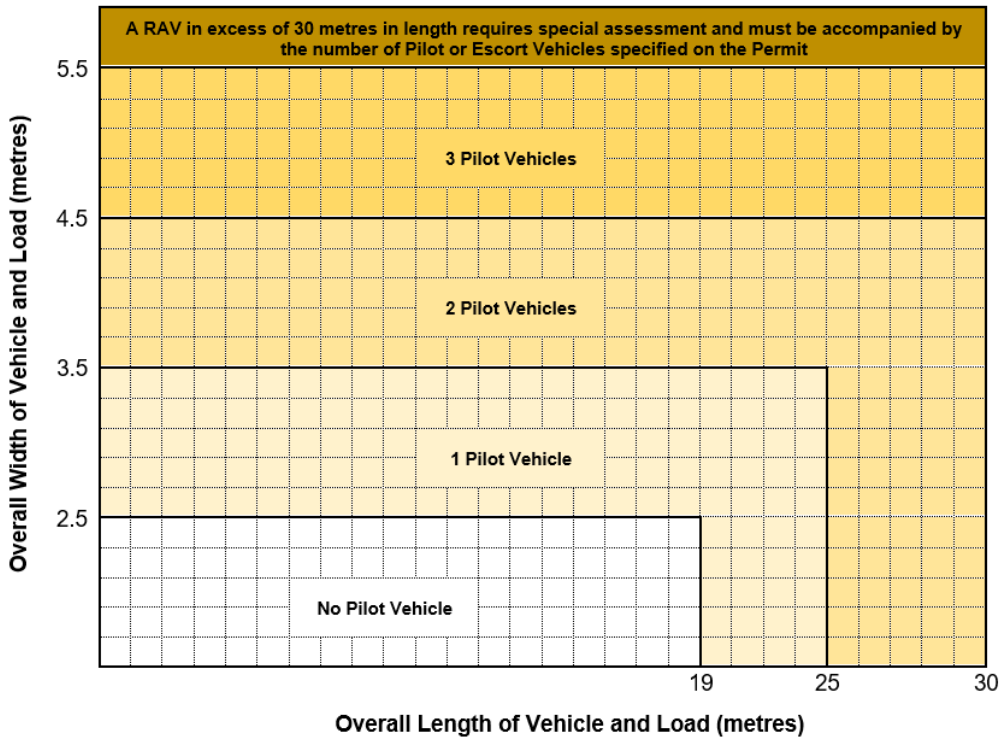
¹ Width between kerbs (metres)

Appendix 2 – General Pilot Requirements

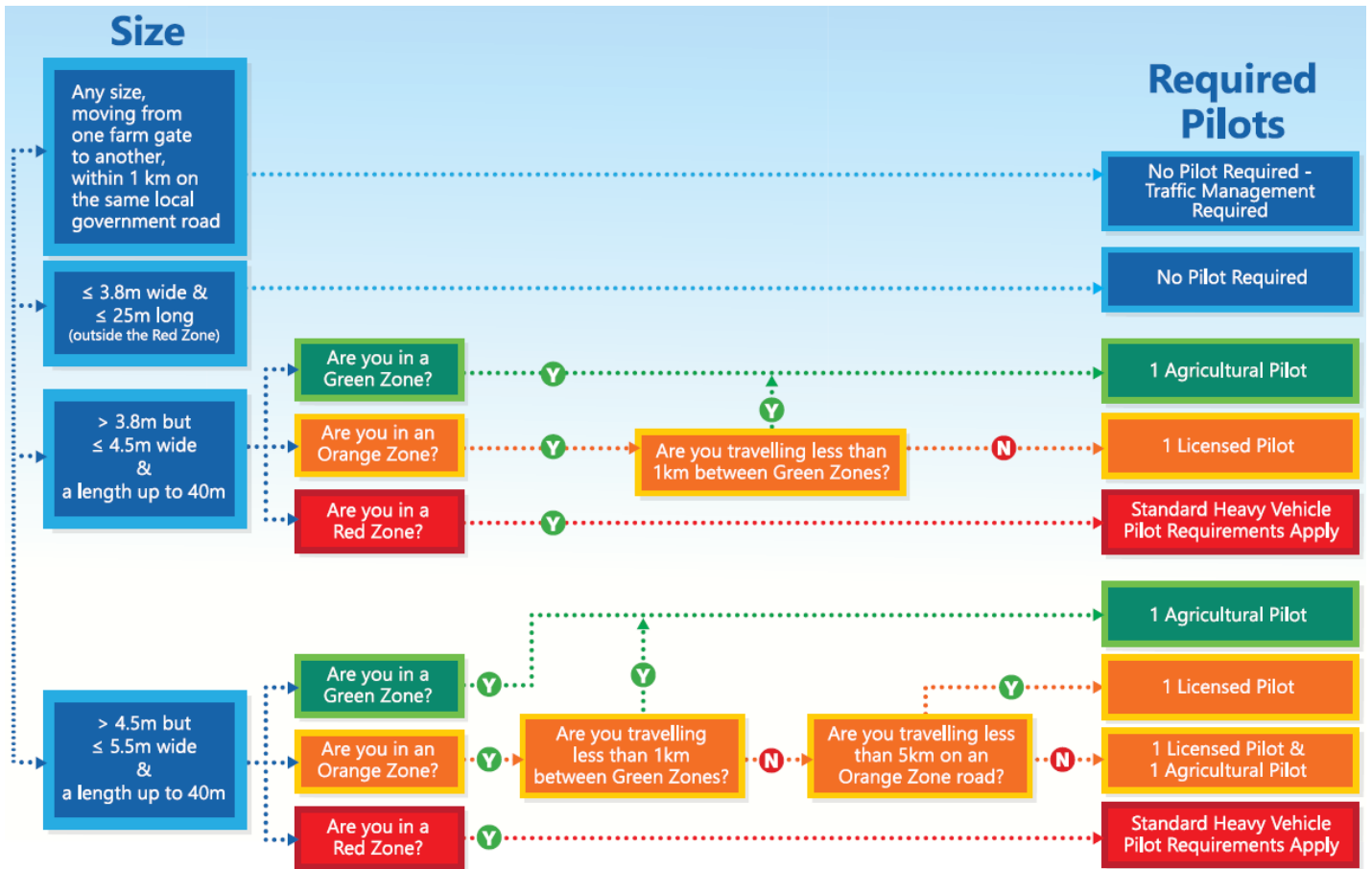
Minimum Pilot Requirements (excluding Central Zones)



Minimum Pilot Requirements within Central Zones



Appendix 3 – Agricultural Pilot Requirements



Green Zone – All roads within the areas bounded by Regional Distributor and State roads.

Orange Zone – All Regional Distributor and State roads, outside the Metropolitan Area.

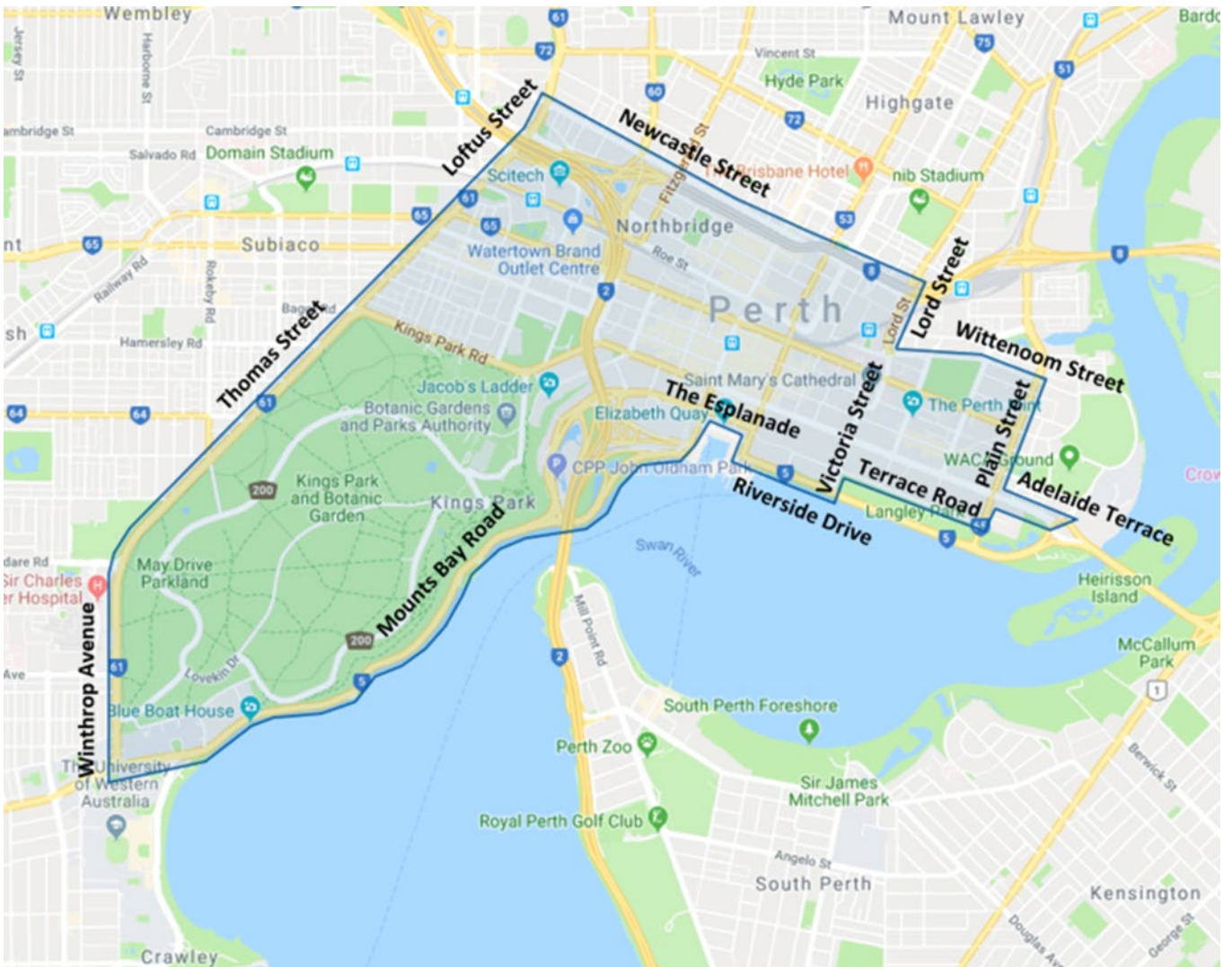
Red Zone – All roads within the Metropolitan Area.

NOTE: Agricultural Pilot Zones are available on the RAV Mapping Tool on the Main Roads website.

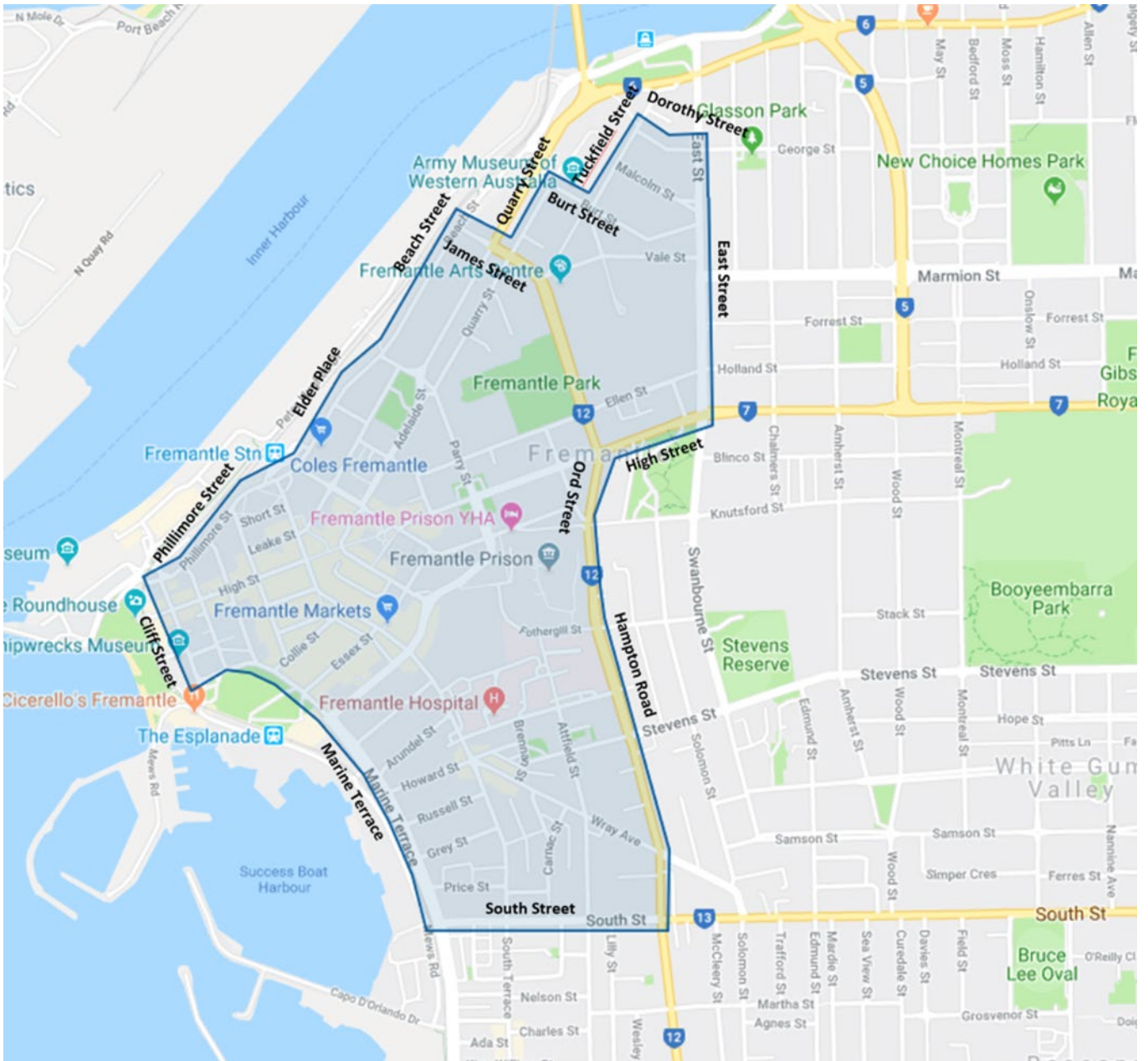
Traffic management must be in accordance with *D07#103477 - Traffic Management Requirements - Towed Agricultural Implements Crossings*, available on the Agricultural Vehicles page on the Main Roads website.

Appendix 4 – Central Zones

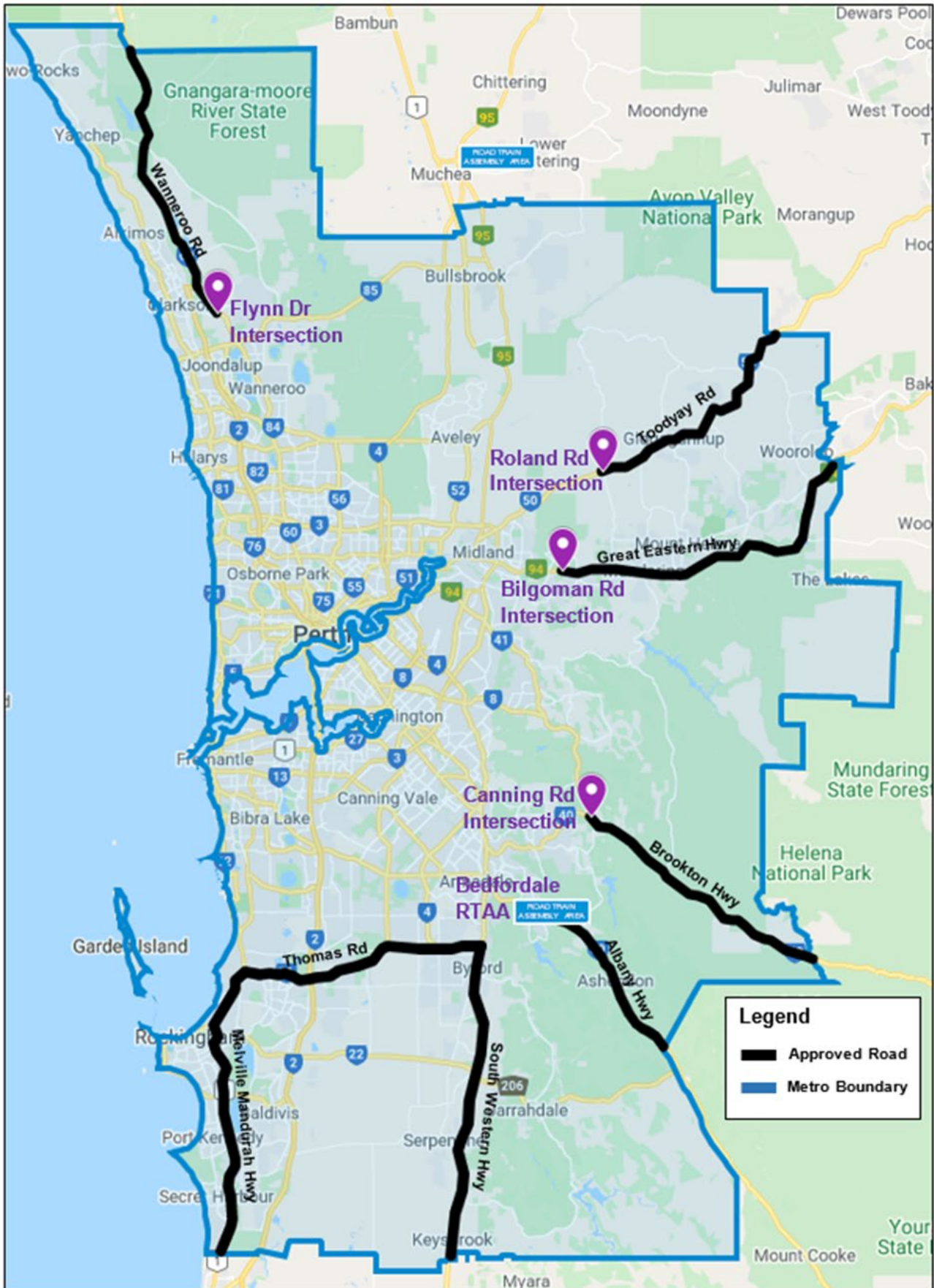
Perth Central Zone



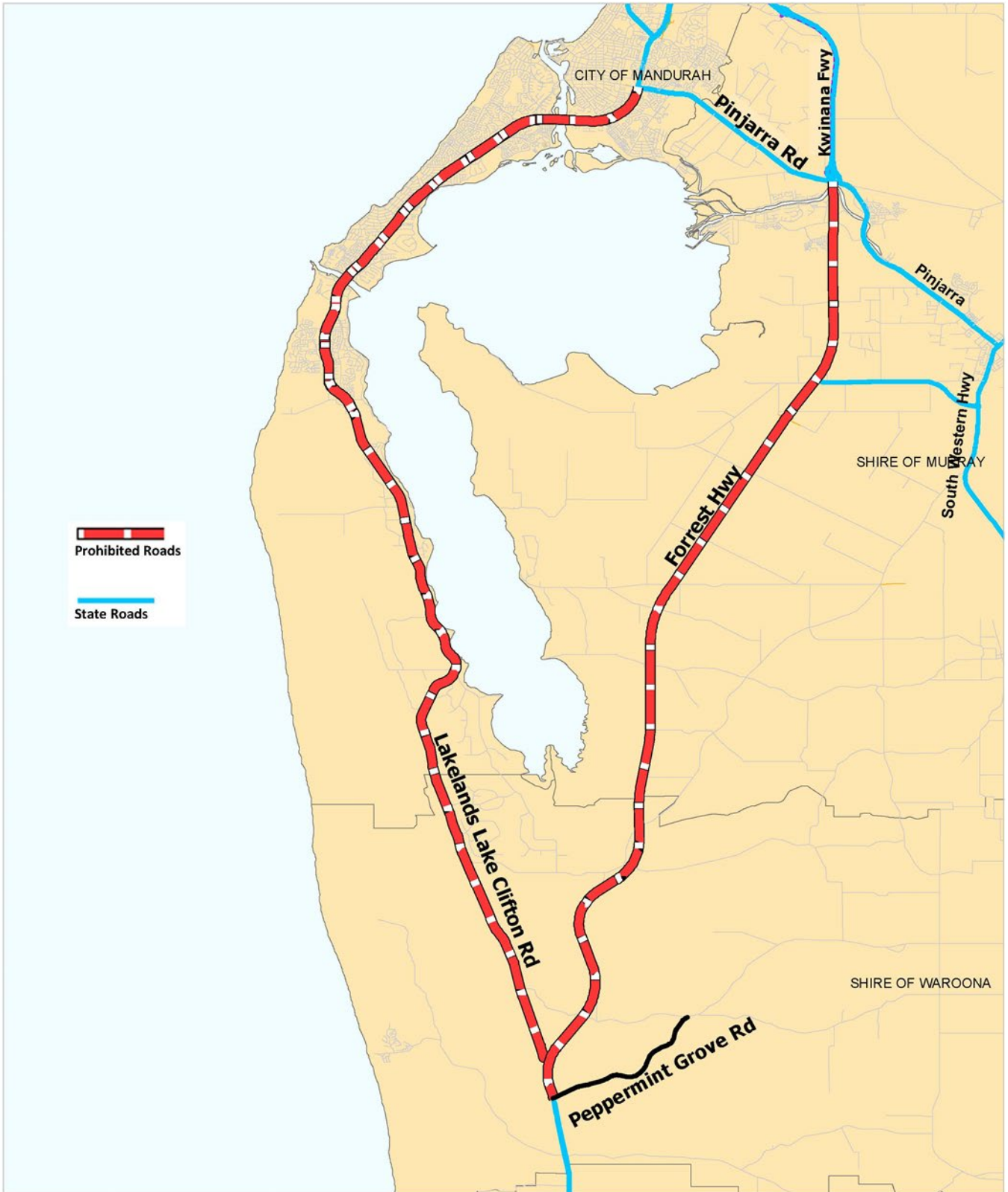
Fremantle Central Zone



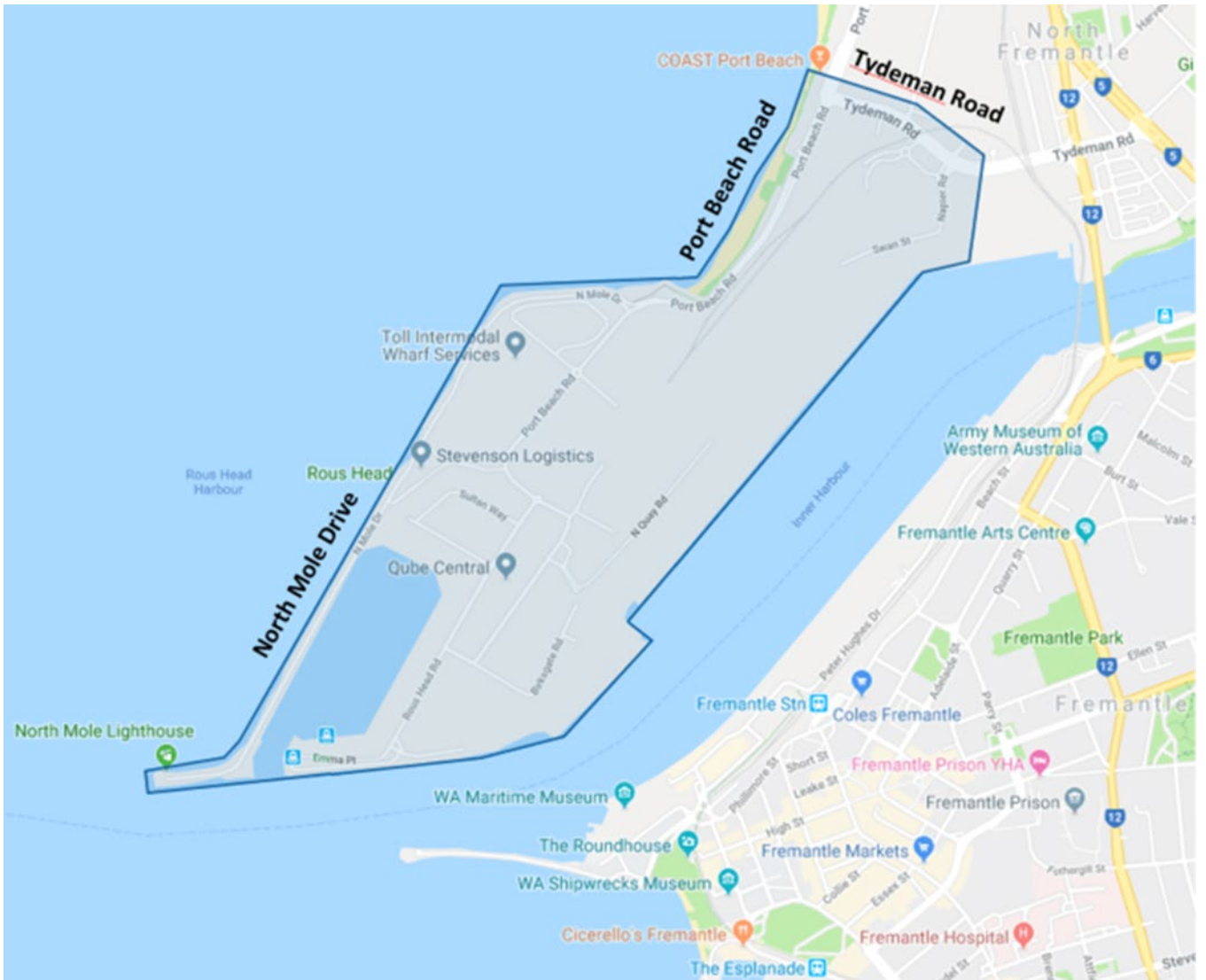
Appendix 5 – Metropolitan Area Map



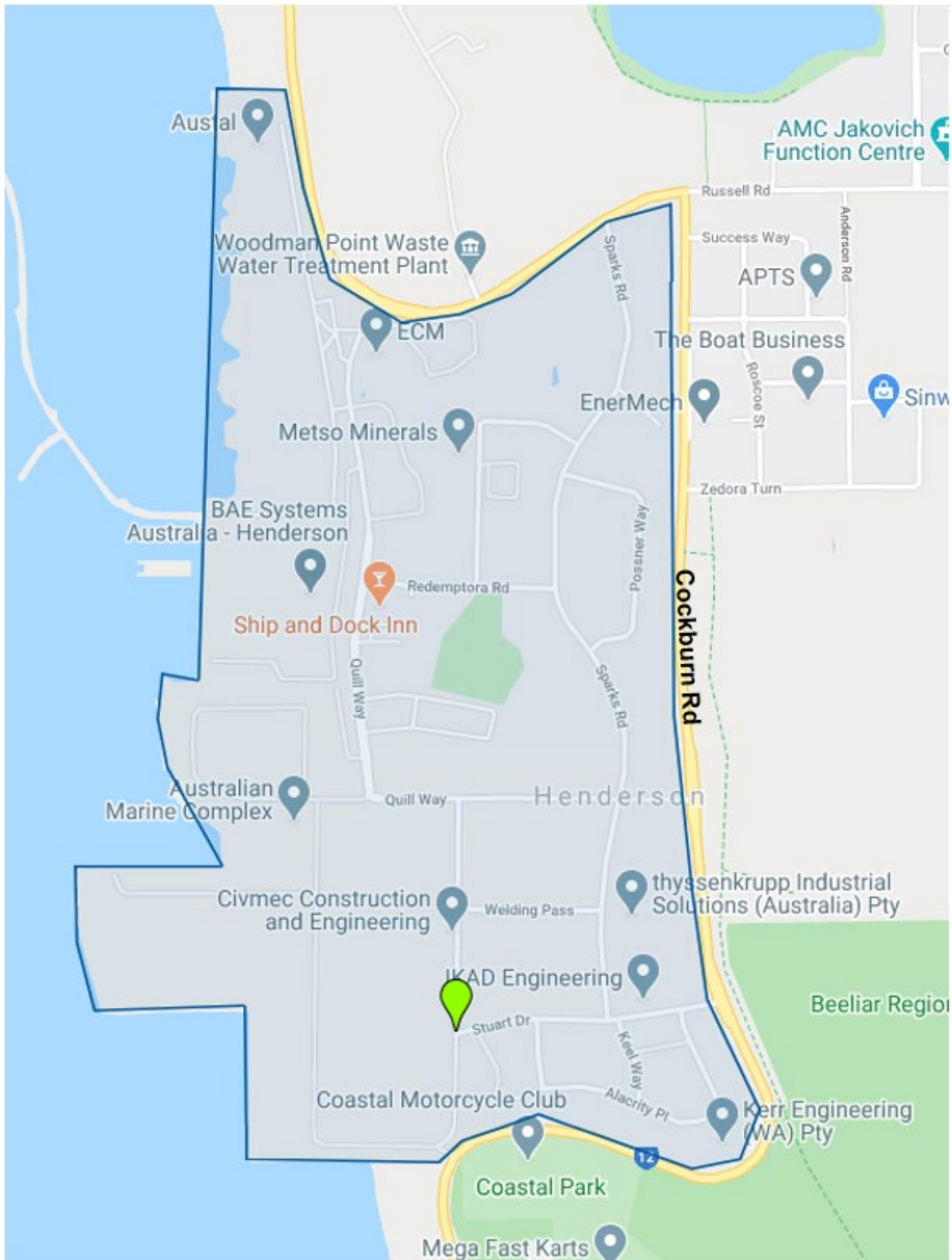
Appendix 6 – Mandurah Curfew Map



Appendix 7 – Fremantle Port Precinct



Appendix 8 – Henderson Industrial Estate



Appendix 9 – Roads Approved for 3 in Convoy

The following roads are approved for 3 RAVs to travel in convoy:

Road Name	Road Number	Local Government	From	To
Bandya Rd	6070009	Laverton	Garden Well Mine Site	Lancefield Diversion Rd
Bell St	8130298	Port Hedland	Great Northern Hwy	SLK 0.40
Goldfields Hwy	H049	Leonora	Leonora Laverton Rd	Mt Magnet Leinster Rd
Great Northern Hwy	H006	Various	Wubin	Wyndham
Hamersley Rd	8110038	Ashburton	Nanutarra Munjina Rd	Eliwana Mine Access
Lancefield Diversion Rd	6070110	Laverton	Bandya Rd	Leonora Laverton Rd
Leonora Laverton Rd	M022	Leonora / Laverton	Lancefield Diversion Rd	Goldfields Hwy
Marble Bar Road	M030	East Pilbara	Great Northern Hwy (Newman)	Roy Hill, Christmas Creek & Cloudbreak Mine Access
Mt Magnet Leinster Rd	M069	Leonora / Sandstone / Mt Magnet	Goldfields Hwy	Great Northern Hwy
Munjina Roy Hill Rd	8120232	East Pilbara	Great Northern Hwy	Marble Bar Rd
Nanutarra Munjina Rd	M029	Ashburton	Great Northern Hwy	Hamersley Rd
Pippingarra Access Rd	812Z024	East Pilbara	Wodgina Access Rd	Mine Access
Port Hedland Rd	H051	Port Hedland	Great Northern Hwy	Wedge St
Wodgina Access Rd	8120059	East Pilbara	Great Northern Hwy	Pippingarra Access Rd

Appendix 10 – Road Approved for 4 in Convoy

The following roads are approved for 4 RAVs to travel in convoy:

Road Name	Road Number	Local Government	From	To
Bandya Rd	6070009	Laverton	Garden Well Mine Site	Lancefield Diversion Rd
Bell St	8130298	Port Hedland	Great Northern Hwy	SLK 0.40
Goldfields Hwy	H049	Leonora	Leonora Laverton Rd	Mt Magnet Leinster Rd
Great Northern Hwy	H006	Various	Mt Magnet	Wyndham
Hamersley Rd	8110038	Ashburton	Nanutarra Munjina Rd	Eliwana Mine Access
Lancefield Diversion Rd	6070110	Laverton	Bandya Rd	Leonora Laverton Rd
Leonora Laverton Rd	M022	Leonora / Laverton	Lancefield Diversion Rd	Goldfields Hwy
Marble Bar Road	M030	East Pilbara	Great Northern Hwy (Newman)	Roy Hill, Christmas Creek & Cloudbreak Mine Access
Mt Magnet Leinster Rd	M069	Leonora / Sandstone / Mt Magnet	Goldfields Hwy	Great Northern Hwy
Munjina Roy Hill Rd	8120232	East Pilbara	Great Northern Hwy	Marble Bar Rd
Nanutarra Munjina Rd	M029	Ashburton	Great Northern Hwy	Hamersley Rd
Port Hedland Rd	H051	Port Hedland	Great Northern Hwy	Wedge St